

MERIDEN RETAIL HEALTH

460 LEWIS AVENUE, MERIDEN, CT



LIST OF SUBMITTAL DRAWINGS

- SURVEY**
 E-1 Existing Conditions Map
 E-2 Existing Conditions Map
 E-3 Existing Conditions Map
 E-4 Existing Conditions Map
 E-5 Existing Conditions Map
 E-6 Existing Conditions Map

- LANDSCAPE ARCHITECTURAL**
 L001 General Site Information
 L200 Overall Site Plan
 L201 Site Materials
 L202 Site Layout
 L203 Site Lighting Photometrics
 L301 Site Grading
 L401 Site Planting
 L402 Plant Materials and Planting Details
 L501 Site Details
 L502 Site Details

- CIVIL ENGINEER**
 C001 Legend, General Notes, Standard Abbreviations
 C101 Site Drainage and Utility Plan
 C201 Soil Erosion and Sedimentation Control Plan
 C202 Soil Erosion and Sedimentation Control Details
 C301 Site Drainage Details
 C302 Site Drainage Details

- ARCHITECTURAL**
 A101 Floor Plans
 A300 Elevations Existing
 A301 Elevations Proposed

Owner:
MedCraft Healthcare Real Estate, LLC
 Minneapolis, Minnesota

Architect / Landscape Architect / Structural Engineer:
The S/L/A/M Collaborative
 Glastonbury, Connecticut

Civil Engineer:
Tighe & Bond
 Shelton, Connecticut

Land Surveyor:
Kratzert, Jones, & Associates
 Middale, Connecticut

MEPPP:
Kohler Ronan
 Danbury, Connecticut



Issued for: ZONING BOARD OF APPEALS
Date: 02/12/2021
Proj No.: 20028.10



MATCHMARK: SHEET 1 OF 6
MATCHMARK: SHEET 2 OF 6

MATCHMARK: SHEET 1 OF 6
MATCHMARK: SHEET 2 OF 6

Disclaimer: The underground utilities shown here have been located by means of existing or proposed records, and the accuracy of such utilities is not guaranteed by the surveyor. The surveyor is not responsible for the accuracy of such utilities shown here. The surveyor is not responsible for the accuracy of such utilities shown here. The surveyor is not responsible for the accuracy of such utilities shown here. The surveyor is not responsible for the accuracy of such utilities shown here.

STATE:	CONNECTICUT
COUNTY:	MERIDEN
TOWNSHIP:	WEST
SECTION:	20
LOT:	100
PROJECT:	220102-MEDCRAFT
DATE:	01/07/2021
SCALE:	1" = 20'
DATE:	JANUARY 7, 2021
DATE:	JANUARY 7, 2021
DATE:	JANUARY 7, 2021

PROPERTY NOTES:
THIS SURVEY IS PERFORMED IN ACCORDANCE WITH THE MINIMUM STANDARDS FOR SURVEYING AND MAPPING IN THE STATE OF CONNECTICUT AS SET FORTH IN THE REGULATIONS OF THE BOARD OF SURVEYING AND MAPPING, (C.G.S. 26-300a-1 TO 26-300a-10). (C.T. SECTIONS 20-300a-1 TO 20-300a-10).
THE TYPE OF SURVEY PERFORMED IS AN IMPROVEMENT LOCATION MAP.
A UTILITY RECORD IS BASED UPON:
THIS SURVEY CONFORMS TO:
CLASS A-2 & 1-2
THIS MAP IS SUBSTANTIALLY CORRECT AS NOTED HEREON.

kratzert, KJA
jones &
associates, inc.
ONE INDIAN HILL ROAD
SUITE 100
MERRIDEN, CT 06460
TEL: (860) 531-2424
FAX: (860) 531-2400
EMAIL: INFO@KJAJA.COM

EXISTING
CONDITIONS
MAP

for
MEDCRAFT
HEALTHCARE REAL
ESTATE, LLC

460 LEWIS AVENUE
MERRIDEN, CT

SCALE: 1" = 20'
DATE: JANUARY 7, 2021

DATE: JANUARY 7, 2021
DATE: JANUARY 7, 2021

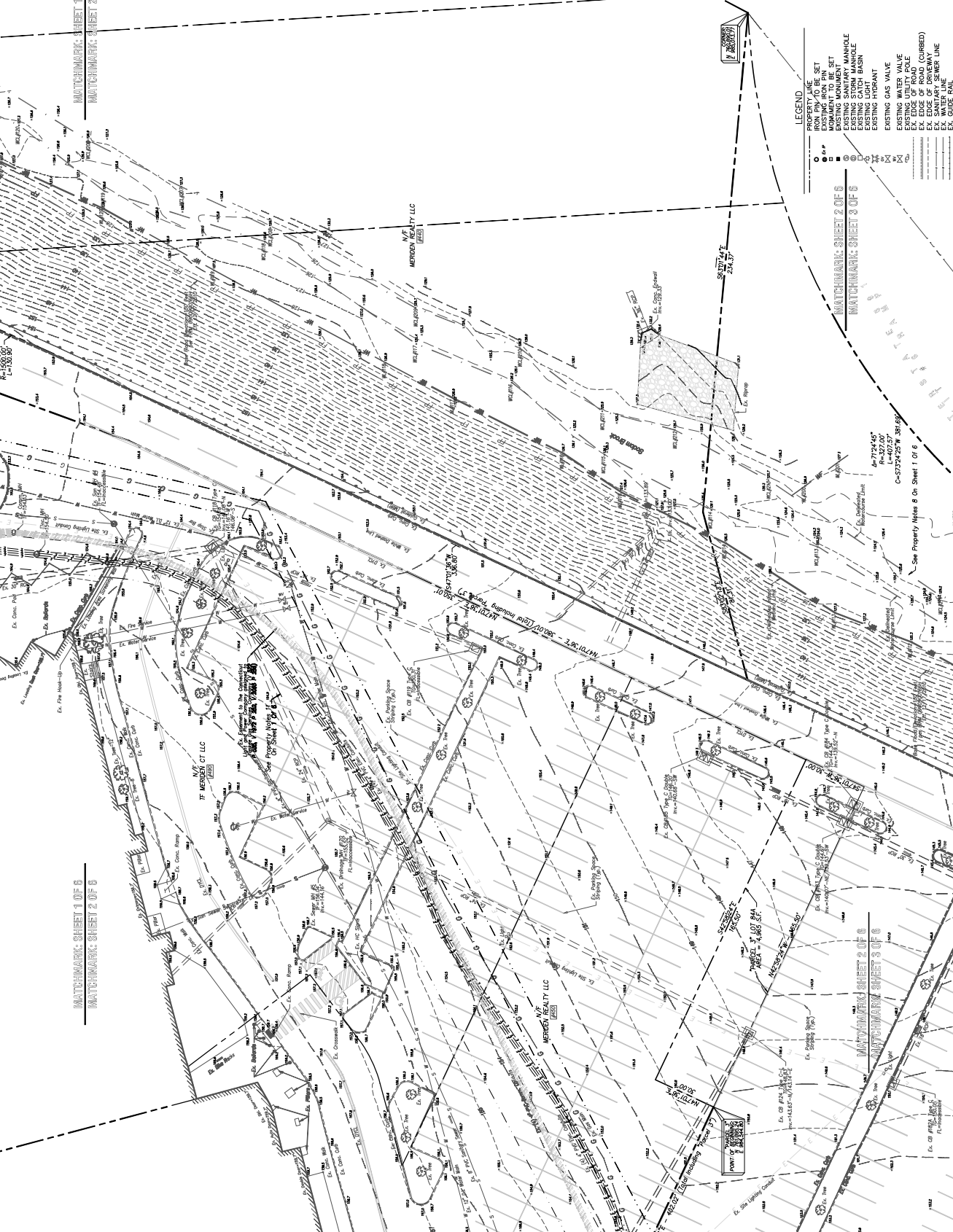
DATE: JANUARY 7, 2021
DATE: JANUARY 7, 2021

DATE: JANUARY 7, 2021
DATE: JANUARY 7, 2021

DATE: JANUARY 7, 2021
DATE: JANUARY 7, 2021

DATE: JANUARY 7, 2021
DATE: JANUARY 7, 2021

DATE: JANUARY 7, 2021
DATE: JANUARY 7, 2021



- LEGEND
- PROPERTY LINE
 - EXISTING IRON PIN
 - MOMENT TO BE SET
 - EXISTING SANITARY MANHOLE
 - EXISTING SANITARY MANHOLE
 - EXISTING LIGHT
 - EXISTING HYDRANT
 - EXISTING GAS VALVE
 - EXISTING WATER VALVE
 - EX. EDGE OF ROAD (UNNUMBERED)
 - EX. EDGE OF DRIVEWAY
 - EX. SANITARY SEWER LINE
 - EX. GUYE RAIL
 - EX. CONTOUR

MATCHMARK: SHEET 2 OF 6
MATCHMARK: SHEET 3 OF 6

MATCHMARK: SHEET 2 OF 6
MATCHMARK: SHEET 3 OF 6

MATCHMARK: SHEET 2 OF 6
MATCHMARK: SHEET 3 OF 6

MATCHMARK: SHEET 2 OF 6
MATCHMARK: SHEET 3 OF 6

MATCHMARK: SHEET 2 OF 6
MATCHMARK: SHEET 3 OF 6

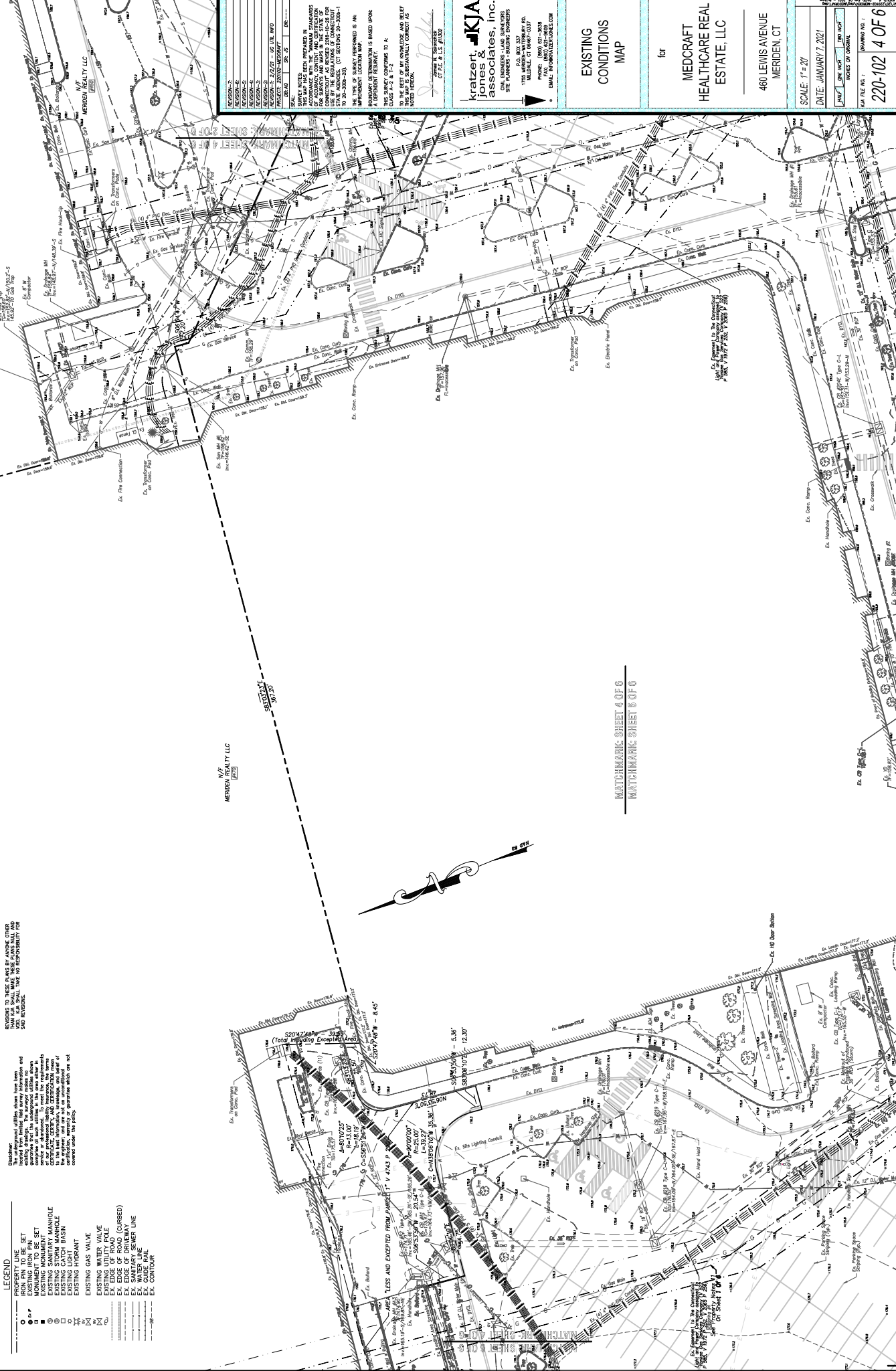
MATCHMARK: SHEET 2 OF 6
MATCHMARK: SHEET 3 OF 6

MATCHMARK: SHEET 2 OF 6
MATCHMARK: SHEET 3 OF 6

See Property Notes 8 On Sheet 1 of 6
See Property Notes 11 On Sheet 7 of 6

- LEGEND**
- IRON PIN TO BE SET
 - EXISTING IRON PIN
 - EXISTING UTILITY POLE
 - EXISTING MONUMENT
 - EXISTING SANITARY MANHOLE
 - EXISTING SANITARY MANHOLE
 - EXISTING CATCH BASIN
 - EXISTING HYDRANT
 - EXISTING GAS VALVE
 - EXISTING WATER VALVE
 - EXISTING UTILITY POLE
 - EX. EDGE OF ROAD (CURBED)
 - EX. EDGE OF DRIVEWAY
 - EX. WATER MAIN
 - EX. WATER LINE
 - EX. CONTINUAL

Disclaimer: The field notes and data were obtained from field survey information and are not to be used for any other purpose. The engineer and surveyor shall have no responsibility for any errors or omissions in the field notes and data.



THIS SURVEY CONFORMS TO A: CLASS A-2 & 1-2 A UTILITY RECORD A UTILITY RECORD

THE SURVEY CONFORMS TO A: CLASS A-2 & 1-2 A UTILITY RECORD A UTILITY RECORD

THIS SURVEY CONFORMS TO A: CLASS A-2 & 1-2 A UTILITY RECORD A UTILITY RECORD

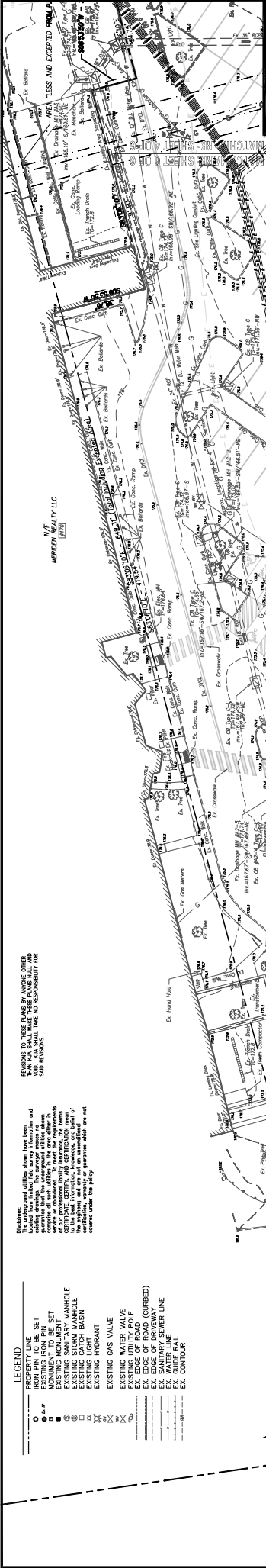
kratzert, KJA Jones & associates, inc.

ONE INDIAN LANE SUITE 200
MERCEN, CT 06090
TEL: (860) 457-2000
FAX: (860) 457-2000
WWW.KRATZERT.COM

EXISTING CONDITIONS MAP

for
MEDCRAFT HEALTHCARE REAL ESTATE, LLC
460 LEWIS AVENUE
MERCEN, CT

SCALE: 1" = 20'
DATE: JANUARY 7, 2021
DRAWING NO.: 220-102 4 OF 6
JOB FILE NO.: 220-102 4 OF 6



DISCLAIMER:
The underground utilities shown have been located by means of a utility locator. The engineer makes no warranty as to the accuracy of the utility locator. The engineer shall make no representation as to the accuracy of the utility locator. The engineer shall make no representation as to the accuracy of the utility locator. The engineer shall make no representation as to the accuracy of the utility locator.

NOTES:
1. THIS SURVEY WAS PERFORMED IN ACCORDANCE WITH THE "MINIMUM STANDARDS FOR SURVEYS AND MAPS IN THE STATE OF CONNECTICUT" AS SET FORTH IN REGS. 19-100-1 TO 19-100-103. (CT SECTIONS 20-300A-1 TO 20-300A-103).
2. THE TYPE OF SURVEY PERFORMED IS AN IMPROVEMENT LOCATION MAP.
3. THIS SURVEY CONFORMS TO A. CLASS A-2 & 1-2.
4. THE MAP IS SUBMITTALLY CORRECT AS NOTED HEREON.
5. THE ENGINEER'S OFFICE IS SAVED FROM ALL LIABILITY FOR ANY AND ALL DAMAGES OR INJURIES TO PERSONS OR PROPERTY CAUSED BY THE USE OF THIS MAP OR ANY INFORMATION THEREON.
6. THE ENGINEER'S OFFICE IS NOT RESPONSIBLE FOR ANY AND ALL DAMAGES OR INJURIES TO PERSONS OR PROPERTY CAUSED BY THE USE OF THIS MAP OR ANY INFORMATION THEREON.

LEGEND

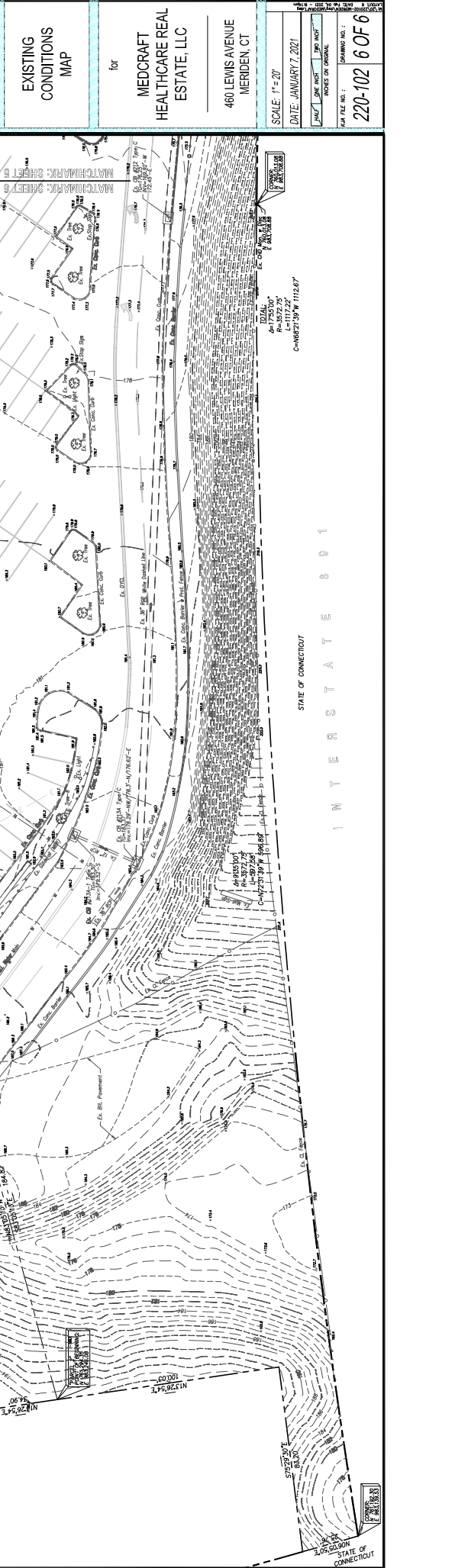
- PROPERTY LINE
- LINE TO BE SET
- MONUMENT TO BE SET
- EXISTING SANITARY MANHOLE
- EXISTING STORM MANHOLE
- EXISTING LIGHT
- EXISTING GAS VALVE
- EXISTING HYDRANT
- EXISTING WATER VALVE
- EX. EDGE OF ROAD
- EX. EDGE OF ROAD (CURBED)
- EX. SANITARY SEWER LINE
- EX. SANITARY WATER LINE
- EX. ROUTE MARK
- EX. CONTOUR

kratzert, KJA Jones & associates, inc.
ONE WINDERS - LAND SURVEYORS
SITE PLANNERS - BUILDING DESIGNERS
7700 MEDCRAFT VALLEY RD.
MERCER, CT 06460
PHONE: (860) 647-3434
FAX: (860) 647-3433
EMAIL: INFO@KJAJONES.COM
WWW.KJAJONES.COM

EXISTING CONDITIONS MAP

for
MEDCRAFT HEALTHCARE REAL ESTATE, LLC
460 LEWIS AVENUE
MERCER, CT

SCALE: 1" = 20'
DATE: JANUARY 7, 2021
DRAWING NO.: 220-102 6 OF 6
MVA FILE NO.:
PROJECT: 220102 - MEDCRAFT
SHEET NO. 6 OF 6



DISCLAIMER:
THE ENGINEER SHALL MAKE NO REPRESENTATION AS TO THE ACCURACY OF THE UTILITY LOCATOR. THE ENGINEER SHALL MAKE NO REPRESENTATION AS TO THE ACCURACY OF THE UTILITY LOCATOR. THE ENGINEER SHALL MAKE NO REPRESENTATION AS TO THE ACCURACY OF THE UTILITY LOCATOR.

LEGEND

- PROPERTY LINE
- LINE TO BE SET
- MONUMENT TO BE SET
- EXISTING SANITARY MANHOLE
- EXISTING STORM MANHOLE
- EXISTING LIGHT
- EXISTING GAS VALVE
- EXISTING HYDRANT
- EXISTING WATER VALVE
- EX. EDGE OF ROAD
- EX. EDGE OF ROAD (CURBED)
- EX. SANITARY SEWER LINE
- EX. SANITARY WATER LINE
- EX. ROUTE MARK
- EX. CONTOUR

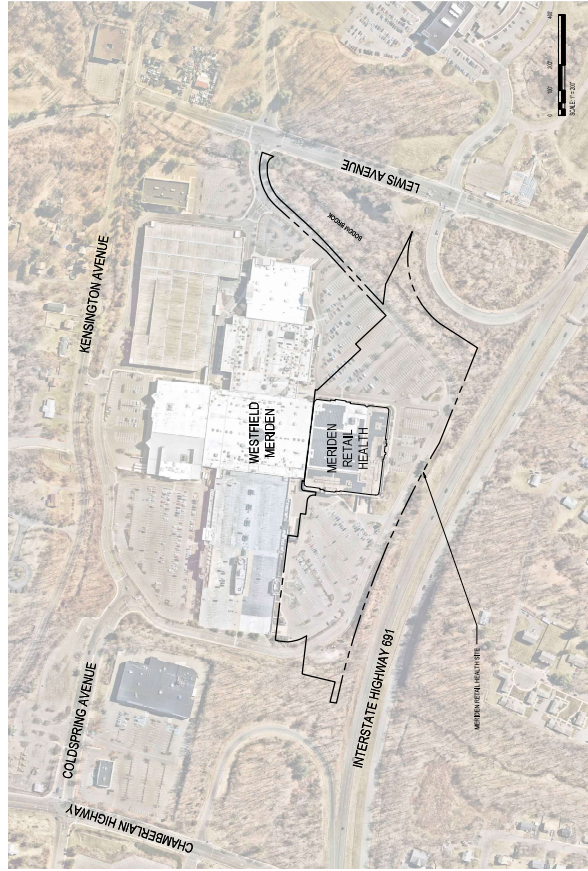
M/V
MERCER REALTY LLC
495 CHAMBERLAIN LLC

TOTAL
A=175200'
L=1117.22'
C=88271.97' W 112.87'

STATE OF CONNECTICUT

WINTER STATE 001

LOG SHEET
STATE OF CONNECTICUT



KEY PLAN
SCALE: 1" = 200'

CHARACTERISTICS	REQUIREMENT	EXISTING	PROPOSED
TOTAL PARCEL AREA	10,000 SQ. FT., MIN.	628,867 SQ. FT. - 14.44 AC. MIN.	NO CHANGE
ZONE	C-2 (GENERAL COMMERCIAL DISTRICT)	C-2 (GENERAL COMMERCIAL DISTRICT)	NO CHANGE
MINIMUM FRONT YARD SETBACK	15 FEET FROM CENTERLINE OF ROAD	72.54 FEET	NO CHANGE
MINIMUM SIDE YARD SETBACK	15 FEET	41.02 FEET	NO CHANGE
MINIMUM REAR YARD SETBACK	20 FEET	4.91 FEET	NO CHANGE
MINIMUM LOT WIDTH	100 FEET	42.92 FEET	NO CHANGE
MAXIMUM BUILDING HEIGHT	75 FEET	LESS THAN 75 FEET	NO CHANGE

GENERAL SITE NOTES:

1. THE CONTRACTOR SHALL VERIFY THE EXISTING UTILITIES AND RECORD THEM IN THE CONTRACT DOCUMENT SET. THE CONTRACTOR SHALL VERIFY THE LOCATION AND DEPTH OF ALL UTILITIES AND RECORD THEM IN THE CONTRACT DOCUMENT SET. THE CONTRACTOR SHALL VERIFY THE LOCATION AND DEPTH OF ALL UTILITIES AND RECORD THEM IN THE CONTRACT DOCUMENT SET.
2. THE CONTRACTOR SHALL VERIFY THE EXISTING UTILITIES AND RECORD THEM IN THE CONTRACT DOCUMENT SET. THE CONTRACTOR SHALL VERIFY THE LOCATION AND DEPTH OF ALL UTILITIES AND RECORD THEM IN THE CONTRACT DOCUMENT SET.
3. THE CONTRACTOR SHALL VERIFY THE EXISTING UTILITIES AND RECORD THEM IN THE CONTRACT DOCUMENT SET. THE CONTRACTOR SHALL VERIFY THE LOCATION AND DEPTH OF ALL UTILITIES AND RECORD THEM IN THE CONTRACT DOCUMENT SET.
4. THE CONTRACTOR SHALL VERIFY THE EXISTING UTILITIES AND RECORD THEM IN THE CONTRACT DOCUMENT SET. THE CONTRACTOR SHALL VERIFY THE LOCATION AND DEPTH OF ALL UTILITIES AND RECORD THEM IN THE CONTRACT DOCUMENT SET.

GENERAL SITE ABBREVIATIONS

SYMBOL	DESCRIPTION
1	CONCRETE
2	ASPHALT
3	GRAVEL
4	SOIL
5	PAVEMENT
6	PAVEMENT
7	PAVEMENT
8	PAVEMENT
9	PAVEMENT
10	PAVEMENT

SITE LAYOUT ABBREVIATIONS

SYMBOL	DESCRIPTION
1	CONCRETE
2	ASPHALT
3	GRAVEL
4	SOIL
5	PAVEMENT
6	PAVEMENT
7	PAVEMENT
8	PAVEMENT
9	PAVEMENT
10	PAVEMENT

SITE GRADING ABBREVIATIONS

SYMBOL	DESCRIPTION
1	CONCRETE
2	ASPHALT
3	GRAVEL
4	SOIL
5	PAVEMENT
6	PAVEMENT
7	PAVEMENT
8	PAVEMENT
9	PAVEMENT
10	PAVEMENT

SITE PLANTING ABBREVIATIONS

SYMBOL	DESCRIPTION
1	CONCRETE
2	ASPHALT
3	GRAVEL
4	SOIL
5	PAVEMENT
6	PAVEMENT
7	PAVEMENT
8	PAVEMENT
9	PAVEMENT
10	PAVEMENT

SITE GRADING NOTES:

1. THE CONTRACTOR SHALL VERIFY THE EXISTING UTILITIES AND RECORD THEM IN THE CONTRACT DOCUMENT SET. THE CONTRACTOR SHALL VERIFY THE LOCATION AND DEPTH OF ALL UTILITIES AND RECORD THEM IN THE CONTRACT DOCUMENT SET.
2. THE CONTRACTOR SHALL VERIFY THE EXISTING UTILITIES AND RECORD THEM IN THE CONTRACT DOCUMENT SET. THE CONTRACTOR SHALL VERIFY THE LOCATION AND DEPTH OF ALL UTILITIES AND RECORD THEM IN THE CONTRACT DOCUMENT SET.
3. THE CONTRACTOR SHALL VERIFY THE EXISTING UTILITIES AND RECORD THEM IN THE CONTRACT DOCUMENT SET. THE CONTRACTOR SHALL VERIFY THE LOCATION AND DEPTH OF ALL UTILITIES AND RECORD THEM IN THE CONTRACT DOCUMENT SET.
4. THE CONTRACTOR SHALL VERIFY THE EXISTING UTILITIES AND RECORD THEM IN THE CONTRACT DOCUMENT SET. THE CONTRACTOR SHALL VERIFY THE LOCATION AND DEPTH OF ALL UTILITIES AND RECORD THEM IN THE CONTRACT DOCUMENT SET.

GENERAL SITE ABBREVIATIONS

SYMBOL	DESCRIPTION
1	CONCRETE
2	ASPHALT
3	GRAVEL
4	SOIL
5	PAVEMENT
6	PAVEMENT
7	PAVEMENT
8	PAVEMENT
9	PAVEMENT
10	PAVEMENT

SITE LAYOUT ABBREVIATIONS

SYMBOL	DESCRIPTION
1	CONCRETE
2	ASPHALT
3	GRAVEL
4	SOIL
5	PAVEMENT
6	PAVEMENT
7	PAVEMENT
8	PAVEMENT
9	PAVEMENT
10	PAVEMENT

SITE GRADING ABBREVIATIONS

SYMBOL	DESCRIPTION
1	CONCRETE
2	ASPHALT
3	GRAVEL
4	SOIL
5	PAVEMENT
6	PAVEMENT
7	PAVEMENT
8	PAVEMENT
9	PAVEMENT
10	PAVEMENT

SITE PLANTING ABBREVIATIONS

SYMBOL	DESCRIPTION
1	CONCRETE
2	ASPHALT
3	GRAVEL
4	SOIL
5	PAVEMENT
6	PAVEMENT
7	PAVEMENT
8	PAVEMENT
9	PAVEMENT
10	PAVEMENT

GENERAL SITE NOTES:

1. THE CONTRACTOR SHALL VERIFY THE EXISTING UTILITIES AND RECORD THEM IN THE CONTRACT DOCUMENT SET. THE CONTRACTOR SHALL VERIFY THE LOCATION AND DEPTH OF ALL UTILITIES AND RECORD THEM IN THE CONTRACT DOCUMENT SET.
2. THE CONTRACTOR SHALL VERIFY THE EXISTING UTILITIES AND RECORD THEM IN THE CONTRACT DOCUMENT SET. THE CONTRACTOR SHALL VERIFY THE LOCATION AND DEPTH OF ALL UTILITIES AND RECORD THEM IN THE CONTRACT DOCUMENT SET.
3. THE CONTRACTOR SHALL VERIFY THE EXISTING UTILITIES AND RECORD THEM IN THE CONTRACT DOCUMENT SET. THE CONTRACTOR SHALL VERIFY THE LOCATION AND DEPTH OF ALL UTILITIES AND RECORD THEM IN THE CONTRACT DOCUMENT SET.
4. THE CONTRACTOR SHALL VERIFY THE EXISTING UTILITIES AND RECORD THEM IN THE CONTRACT DOCUMENT SET. THE CONTRACTOR SHALL VERIFY THE LOCATION AND DEPTH OF ALL UTILITIES AND RECORD THEM IN THE CONTRACT DOCUMENT SET.

GENERAL SITE ABBREVIATIONS

SYMBOL	DESCRIPTION
1	CONCRETE
2	ASPHALT
3	GRAVEL
4	SOIL
5	PAVEMENT
6	PAVEMENT
7	PAVEMENT
8	PAVEMENT
9	PAVEMENT
10	PAVEMENT

SITE LAYOUT ABBREVIATIONS

SYMBOL	DESCRIPTION
1	CONCRETE
2	ASPHALT
3	GRAVEL
4	SOIL
5	PAVEMENT
6	PAVEMENT
7	PAVEMENT
8	PAVEMENT
9	PAVEMENT
10	PAVEMENT

SITE GRADING ABBREVIATIONS

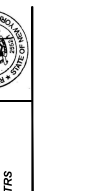
SYMBOL	DESCRIPTION
1	CONCRETE
2	ASPHALT
3	GRAVEL
4	SOIL
5	PAVEMENT
6	PAVEMENT
7	PAVEMENT
8	PAVEMENT
9	PAVEMENT
10	PAVEMENT

SITE PLANTING ABBREVIATIONS

SYMBOL	DESCRIPTION
1	CONCRETE
2	ASPHALT
3	GRAVEL
4	SOIL
5	PAVEMENT
6	PAVEMENT
7	PAVEMENT
8	PAVEMENT
9	PAVEMENT
10	PAVEMENT

SLAM
The S.I.L.A.M. Collaborative

80 Glastonbury Boulevard
Glastonbury, CT 06033-4410
Phone: 860.657.8077
www.slamcoll.com



Checked
TRR

**MERIDEN
RETAIL
HEALTH**

460 Lewis Avenue
Meriden, CT 06451

02/12/2021
AS SHOWN
20228.10

GENERAL SITE
INFORMATION

PROGRESS
NOT FOR CONSTRUCTION

GENERAL SITE
INFORMATION

02/12/2021
AS SHOWN
20228.10

GENERAL SITE
INFORMATION

02/12/2021
AS SHOWN
20228.10

GENERAL SITE
INFORMATION

02/12/2021
AS SHOWN
20228.10

MERIDEN RETAIL HEALTH

460 Lewis Avenue
Meriden, CT 06451

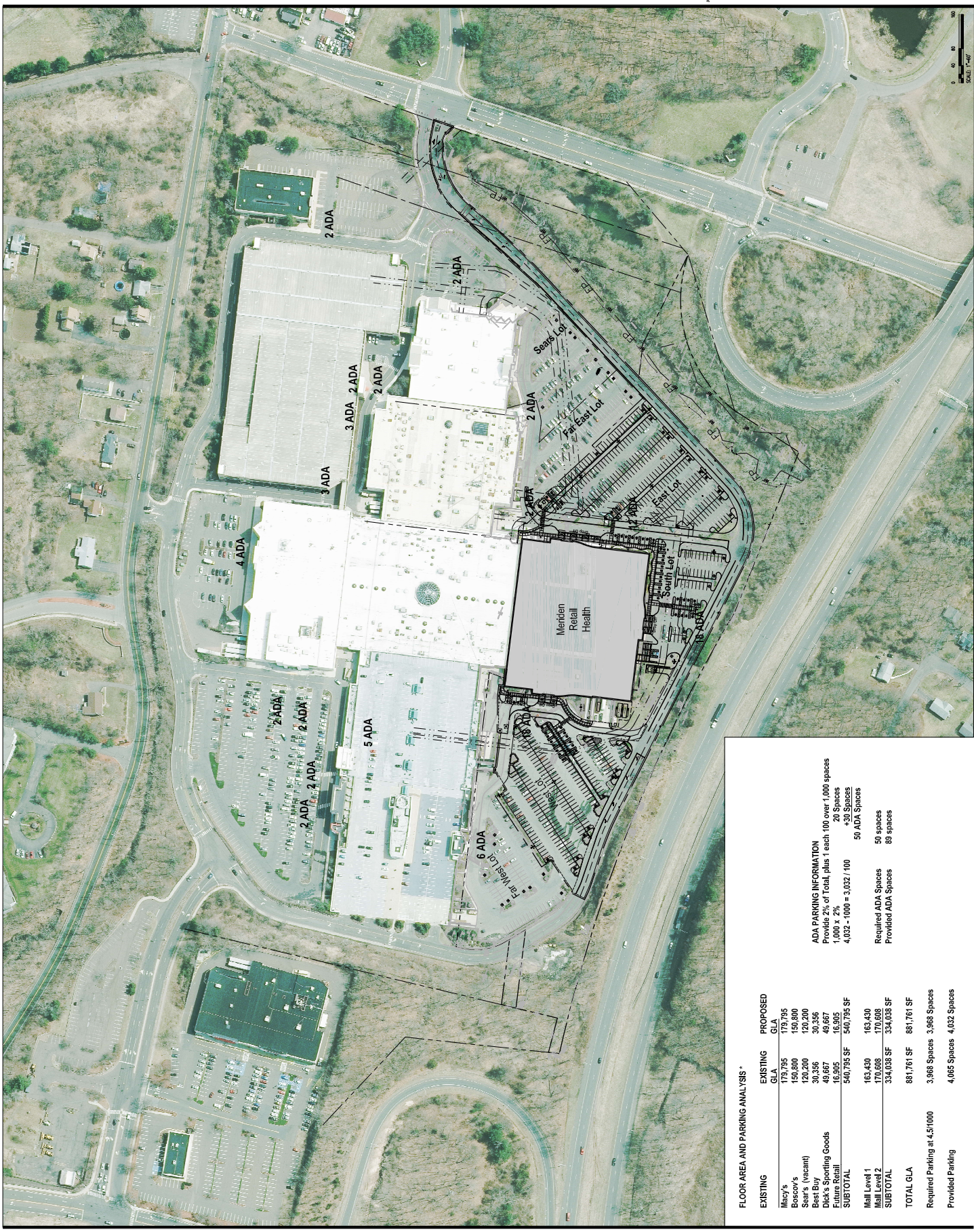


Number: Date: Revision: For:

**PROGRESS
NOT FOR CONSTRUCTION**

**OVERALL
WESTFIELD MERIDEN MALL
SITE PLAN**

Date: 02/12/2021
Scale: 1" = 80'
202028.10



FLOOR AREA AND PARKING ANALYSIS *

EXISTING	EXISTING GLA	PROPOSED GLA
Macy's	179,795	179,795
Best Buy	150,800	150,800
Sears (vacant)	120,200	120,200
Best Buy	30,356	30,356
Dick's Sporting Goods	49,667	49,667
Future Retail	16,905	16,905
SUBTOTAL	540,795 SF	540,795 SF
Mall Level 1	163,430	163,430
Mall Level 2	170,608	170,608
SUBTOTAL	334,038 SF	334,038 SF
TOTAL GLA	881,761 SF	881,761 SF
Required Parking at 4.5/1000	3,968 Spaces	3,968 Spaces
Provided Parking	4,065 Spaces	4,065 Spaces

ADA PARKING INFORMATION
Provide 2% of Total, plus 1 each 100 over 1,000 spaces
1,000 x 2% = 20 Spaces
4,032 - 1,000 = 3,032 / 100 = 30 ADA Spaces
50 ADA Spaces
Required ADA Spaces = 50 spaces
Provided ADA Spaces = 89 spaces

1 2 3 4 5
A B C D E

0 20 40 60 80
SCALE: 1"=80'



Drawn: T.R.S.
Checked: T.R.S.

MERIDEN RETAIL HEALTH

460 Lewis Avenue
Meriden, CT 06451



Number: Date: Name: Plot:

**PROGRESS
CONSTRUCTION
NOT FOR CONSTRUCTION**

DATE: 02/12/2021
DRAWN: T.R.S.

SITE MATERIALS

02/12/2021

1" = 40'

20238.10

L201





Drawn: KP
 Checked: T.R.S.

**MERIDEN
 RETAIL
 HEALTH**

460 Lewis Avenue
 Meriden, CT 06451



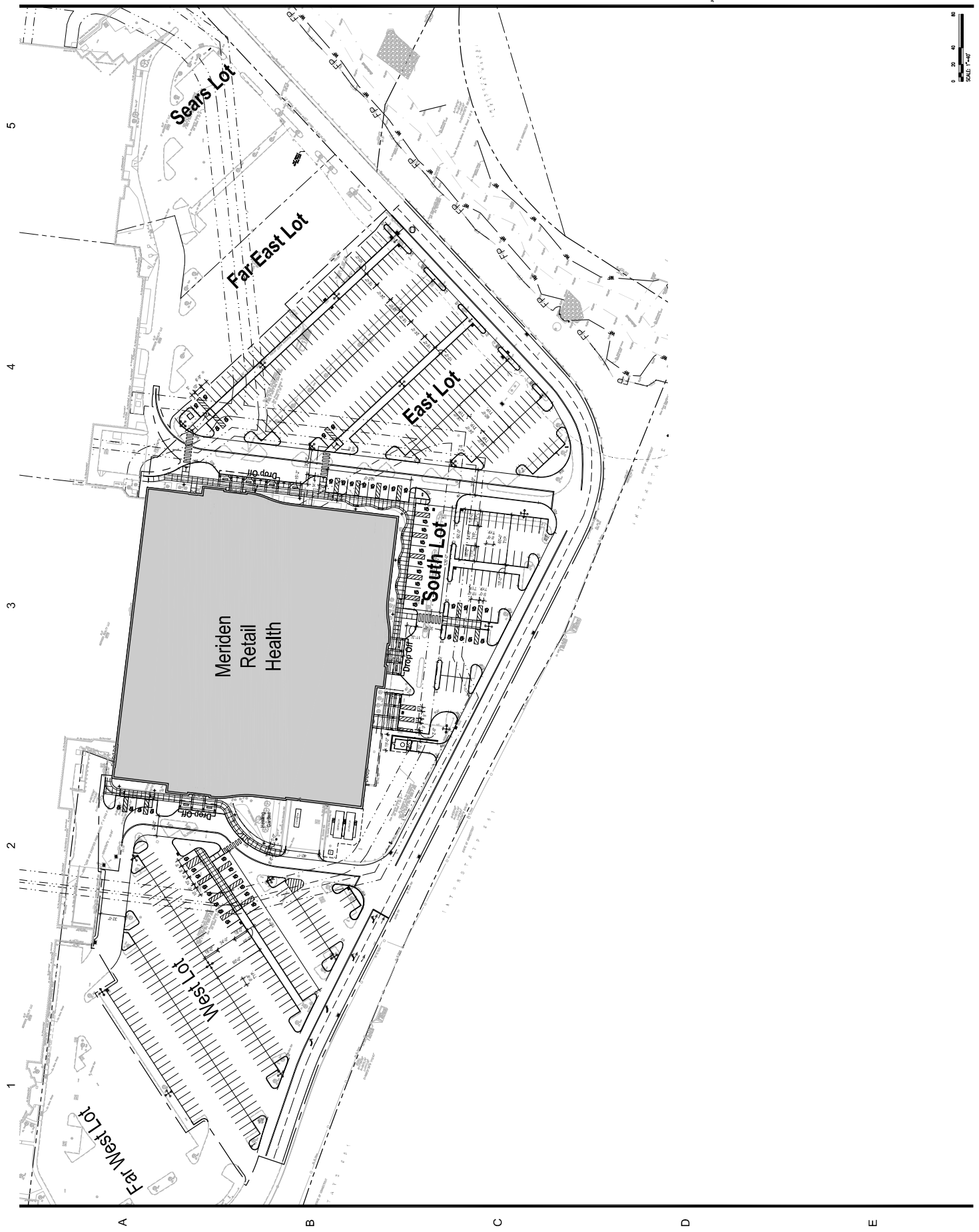
Number: Date: Issued For:

**PROGRESS
 NOT FOR CONSTRUCTION**

DATE: 02/12/2021
 DRAWN BY: [Name]

SITE LAYOUT

Date: 02/12/2021
 Scale: 1" = 40'
 Project: L202
 20238.10





**MERIDEN
RETAIL
HEALTH**

460 Lewis Avenue
Meriden, CT 06451



Number: Date: Revision: P/N:

**PROGRESS
NOT FOR CONSTRUCTION**

DATE: 02/12/2021
DRAWN BY: TFS

**SITE LIGHTING
PHOTOMETRICS**

02/12/2021
1" = 40'
2023.8.10
L203

1 2 3 4 5

SYMBOL	DESCRIPTION	UNIT	VALUE	UNIT	VALUE	UNIT	VALUE
1	AVG. FOOT CANDLE	FC	2.57	AVG. FOOT CANDLE	FC	2.57	AVG. FOOT CANDLE
2	MIN. FOOT CANDLE	FC	1.57	MIN. FOOT CANDLE	FC	1.57	MIN. FOOT CANDLE
3	MAX. FOOT CANDLE	FC	3.57	MAX. FOOT CANDLE	FC	3.57	MAX. FOOT CANDLE
4	UNIFORMITY		0.85	UNIFORMITY		0.85	UNIFORMITY
5	GLARE		0.25	GLARE		0.25	GLARE

Calculation Summary

Calculation	Unit	Value	Unit	Value
Area	Sq. Ft.	10,000	Area	Sq. Ft.
Volume	Cu. Ft.	100,000	Volume	Cu. Ft.
Light Output	Lumens	100,000	Light Output	Lumens
Foot Candles	FC	2.57	Foot Candles	FC
Uniformity		0.85	Uniformity	
Glare		0.25	Glare	

Greg Ladd, Scott Dabney
Lighting Design
1200 Commercial Ave.
Rocky Hill, CT 06067
Website: www.lightingdesign.com
Phone Number: (860) 732-1171, x.210
Email Address: greg@lightingdesign.com





**MERIDEN
RETAIL
HEALTH**

460 Lewis Avenue
Meriden, CT 06451

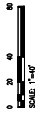


**PROGRESS
NOT FOR CONSTRUCTION**

**SITE
GRADING**

L301

02/12/2021
1" = 40'
20028.10



1 2 3 4 5

A B C D E



**MERIDEN
RETAIL
HEALTH**

460 Lewis Avenue
Meriden, CT 06451



PROGRESS
NOT FOR CONSTRUCTION

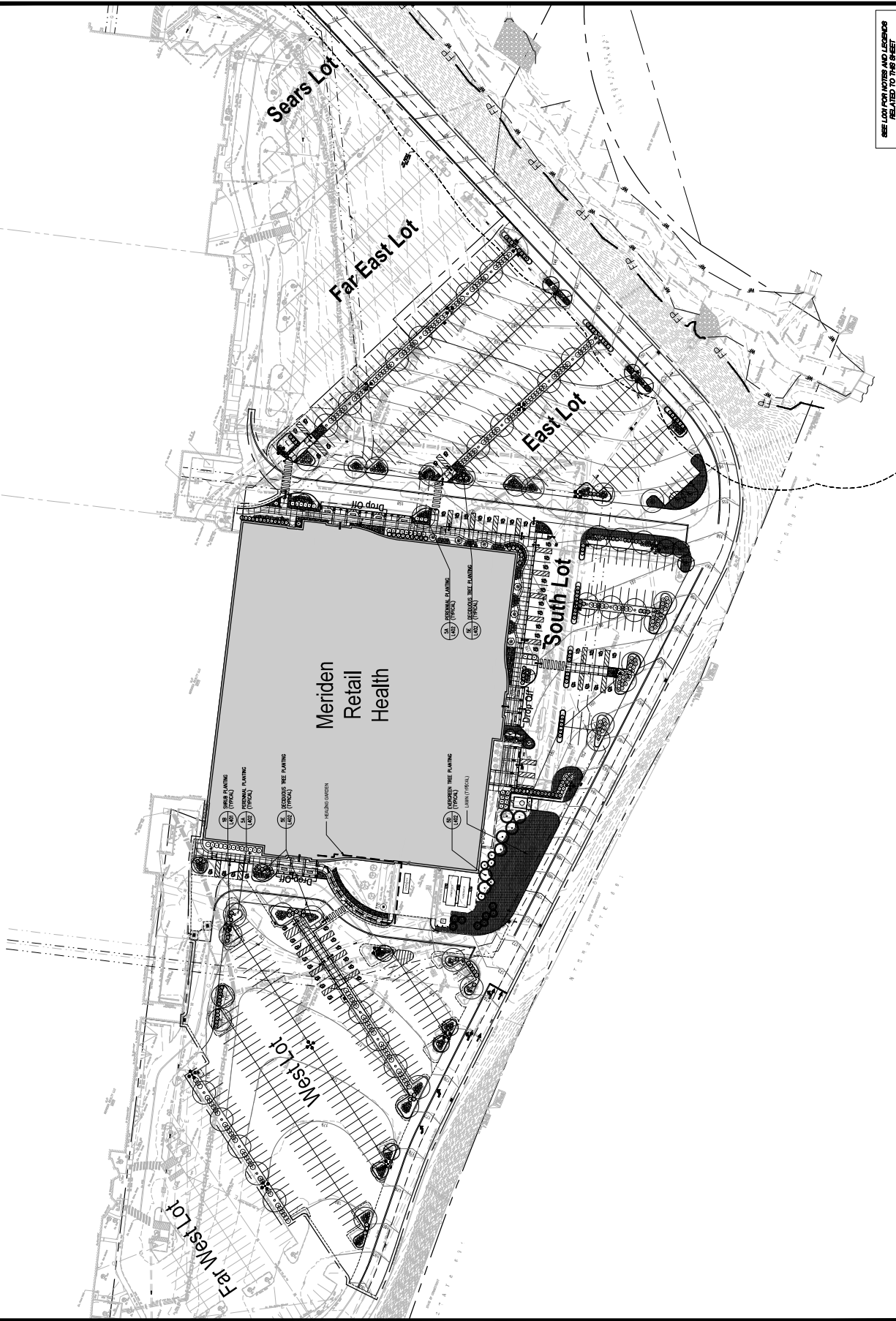
**SITE
PLANTING**

L401

02/12/2021
1" = 40'
20028.10

SEE LOG FOR NOTES AND LEGENDS
RELATED TO THIS SHEET

SEE LABEL FOR PLANT MATERIAL LIST
AND PLANTING DETAILS





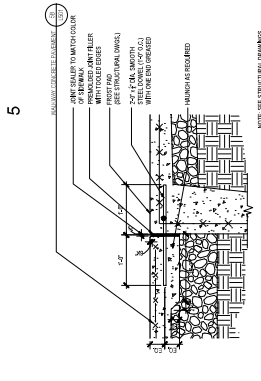
MERIDEN RETAIL HEALTH

460 Lewis Avenue
Meriden, CT 06451

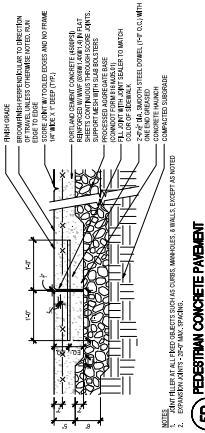
**PROGRESS
NOT FOR CONSTRUCTION**

**SITE
DETAILS**

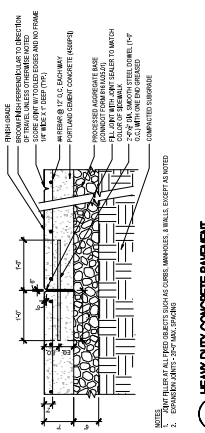
02/12/2021
AS SHOWN
202828.10



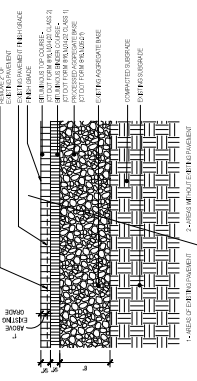
3A FROST PAD AT CONCRETE WALK
NOTE: SEE STRUCTURAL DRAWINGS FOR FOOTING REINFORCEMENT



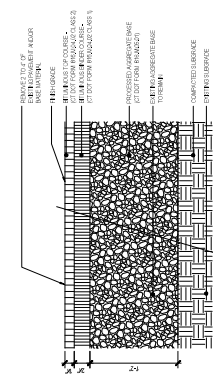
3B REENTRANT CONCRETE PAVEMENT
NOTES:
1. REINFORCING BARS SHALL BE AS NOTED.
2. EXPANDED POLYMER BEAD FILLER SHALL BE AS NOTED.
3. COMPACTED SUBGRADE



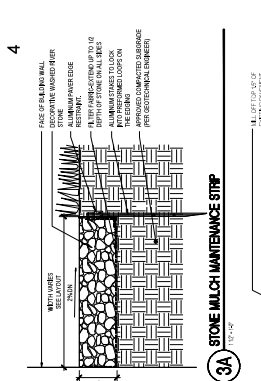
3C HEAVY DUTY CONCRETE PAVEMENT
NOTES:
1. FINISH GRADE SHALL BE AS NOTED.
2. EXPANDED POLYMER BEAD FILLER SHALL BE AS NOTED



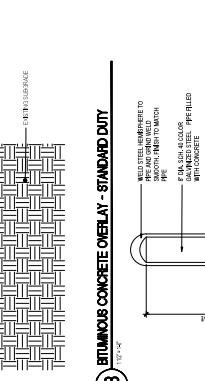
3D BITUMINOUS CONCRETE PAVEMENT - STANDARD DUTY



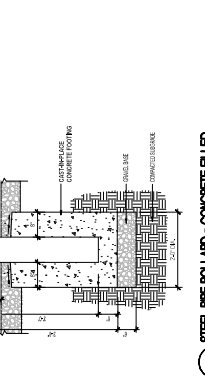
3E BITUMINOUS CONCRETE PAVEMENT - HEAVY DUTY



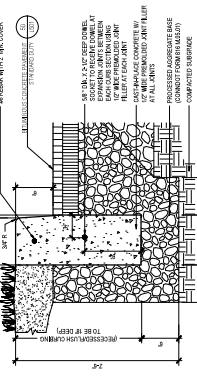
3A STONE MULCH MAINTENANCE STRIP



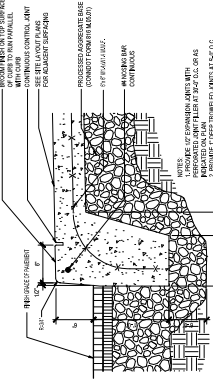
3B BITUMINOUS CONCRETE OVERLAY - STANDARD DUTY



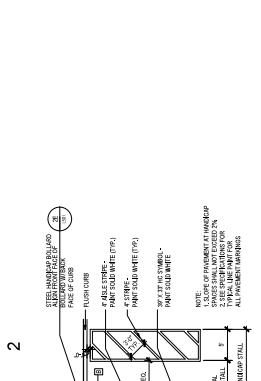
3C STEEL PIPE BOLLARD - CONCRETE FILLED



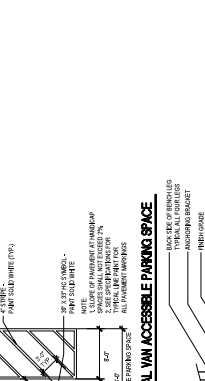
3D CAST IN-PLACE CONCRETE CURB (CPC)



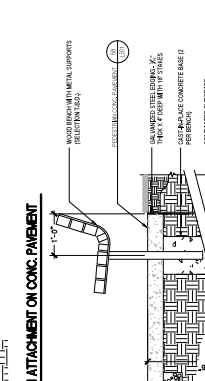
3E INTEGRAL CONCRETE CURB (ICC)



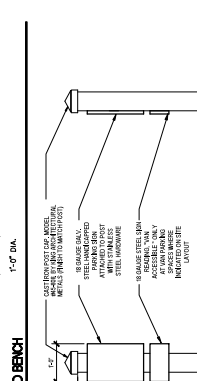
2A TYPICAL ACCESSIBLE PARKING SPACE



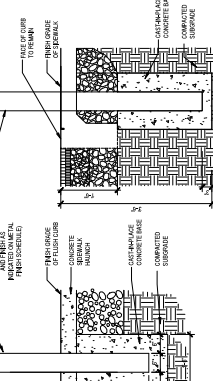
2B TYPICAL VAN ACCESSIBLE PARKING SPACE



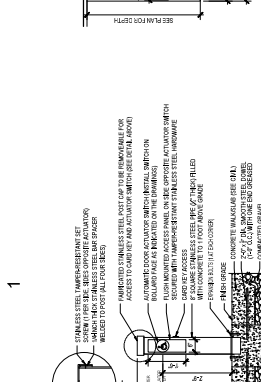
2C BENCH ATTACHMENT ON CONC. PAVEMENT



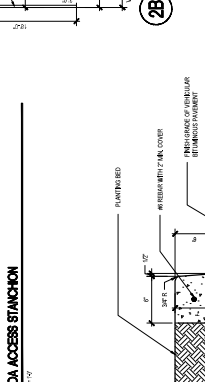
2D WOOD BENCH



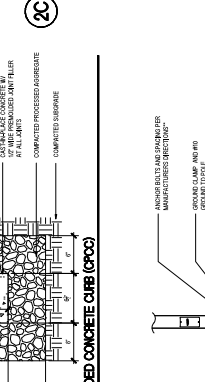
2E HANDICAP PARKING STORAGE BOLLARD



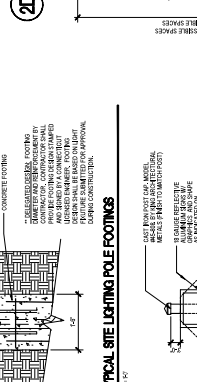
1A ADA ACCESS STANCHION



1B ENTRAINED CONCRETE CURB (CPC)



1C TYPICAL SITE LIGHTING POLE FOOTINGS



1D TRAFFIC CONTROL SKIN



MERIDEN RETAIL HEALTH

460 Lewis Avenue
Meriden, CT 06451



PROGRESS
NOT FOR CONSTRUCTION

SITE
DETAILS

02/12/2021
AS SHOWN
L-502
20028.10

5

4

3

2

1

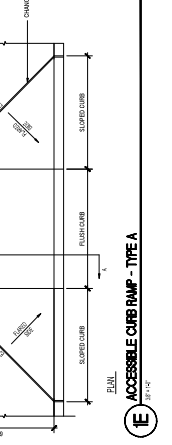
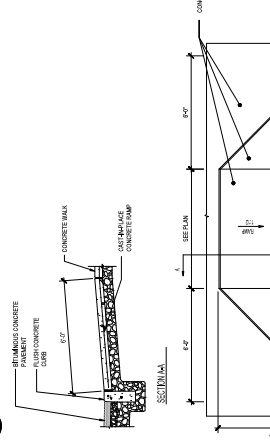
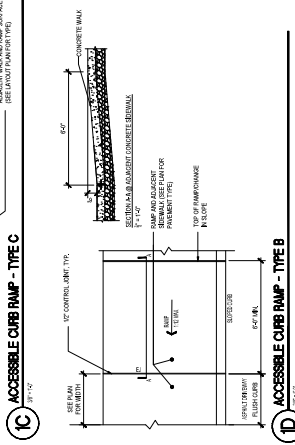
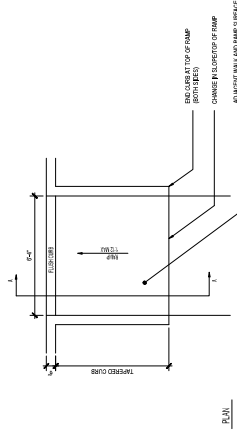
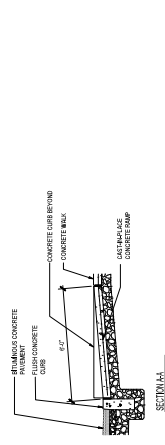
A

B

C

D

E



Size 1

Size 2



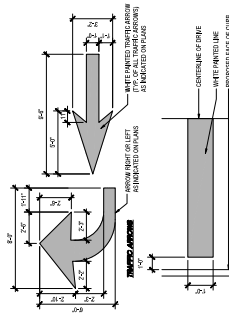
Side A
Illuminated
Directional
7'-0" x 3'-6"
24.5 sqft

Side B

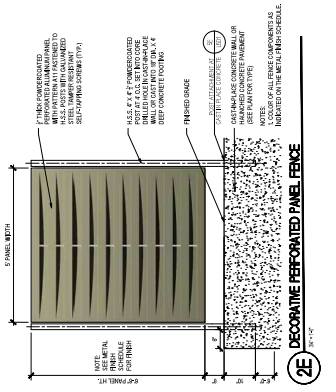
Side A
Illuminated
Directional
5'-0" x 2'-6"
12.5 sqft

Side B

4D ILLUMINATED MOMENT SIGN - SIZE 1 and SIZE 2



2D PAINTED PANEL MARKINGS



4E DECORATIVE PERFORATED PANEL FENCE

Pole Mt. Bolard Mt. Regulatory
18" x 27" 18" x 27"
8'-11" OAH 5'-0" Bottom of Sign

4E NON-ILLUMINATED DIRECTIONAL SIGN

4E NON-ILLUMINATED DIRECTIONAL SIGN

4E NON-ILLUMINATED DIRECTIONAL SIGN

20028.10

MERIDEN RETAIL HEALTH

460 Lewis Avenue
Meriden, CT 06451

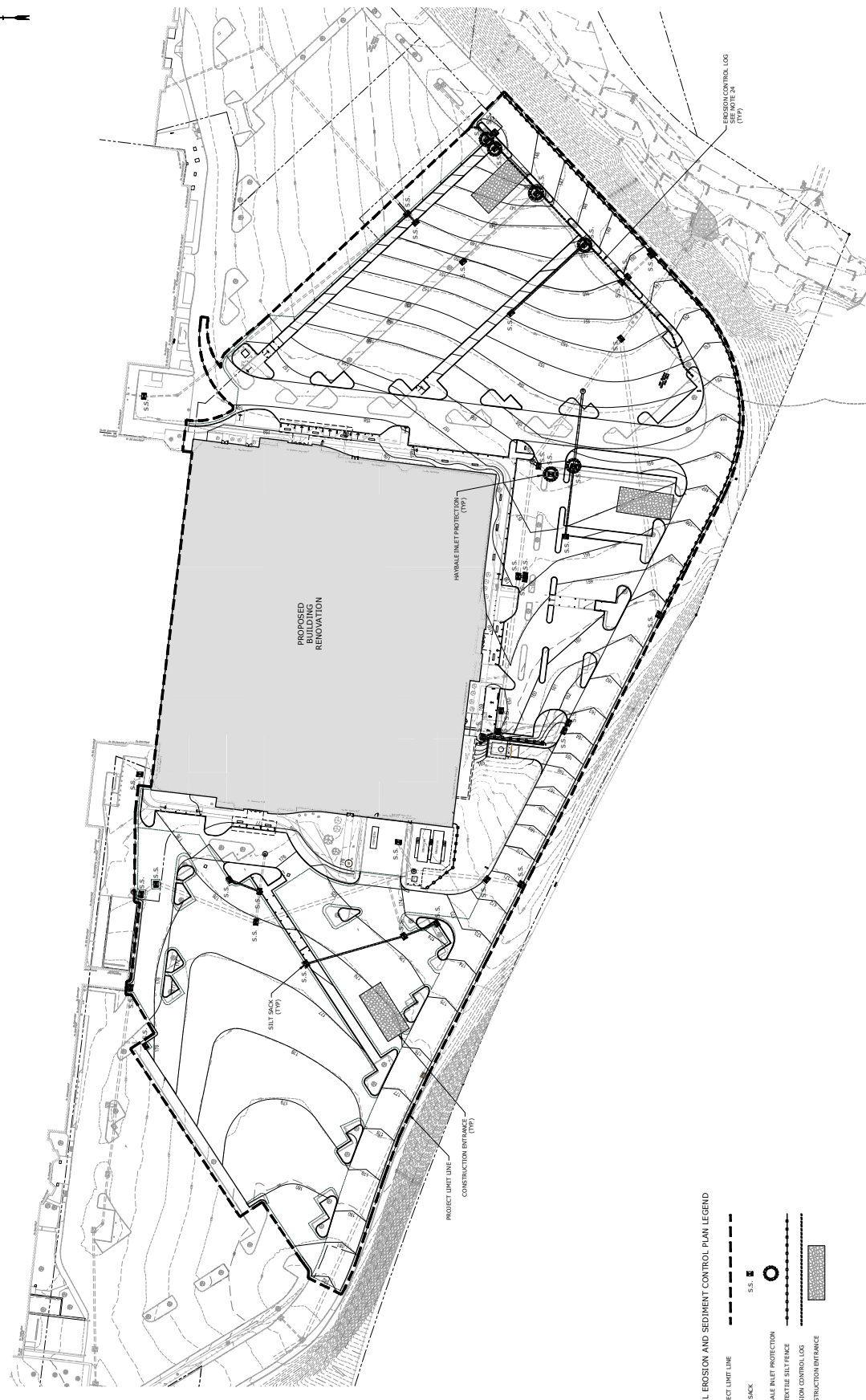
NOT FOR CONSTRUCTION

PROGRESS

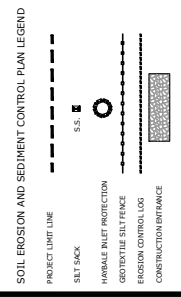
DATE: 02/21/2021
PROJECT: AS SHOW

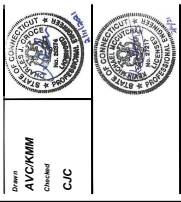
SCALE: 1" = 40'

02/21/2021
AS SHOW
2028-10



- SOIL EROSION AND SEDIMENTATION CONTROL NOTES**
1. ALL EROSION CONTROL MEASURES SHALL BE INSTALLED AS SHOWN ON THIS PLAN AND MAINTAINED THROUGHOUT THE CONSTRUCTION PERIOD. THE CONTRACTOR SHALL BE RESPONSIBLE FOR CONSTRUCTION AND MAINTENANCE OF ALL EROSION CONTROL MEASURES THROUGHOUT THE CONSTRUCTION PERIOD.
 2. ALL EROSION CONTROL MEASURES SHALL BE INSTALLED AS SHOWN ON THIS PLAN AND MAINTAINED THROUGHOUT THE CONSTRUCTION PERIOD. THE CONTRACTOR SHALL BE RESPONSIBLE FOR CONSTRUCTION AND MAINTENANCE OF ALL EROSION CONTROL MEASURES THROUGHOUT THE CONSTRUCTION PERIOD.
 3. ALL EROSION CONTROL MEASURES SHALL BE INSTALLED AS SHOWN ON THIS PLAN AND MAINTAINED THROUGHOUT THE CONSTRUCTION PERIOD. THE CONTRACTOR SHALL BE RESPONSIBLE FOR CONSTRUCTION AND MAINTENANCE OF ALL EROSION CONTROL MEASURES THROUGHOUT THE CONSTRUCTION PERIOD.
 4. ALL EROSION CONTROL MEASURES SHALL BE INSTALLED AS SHOWN ON THIS PLAN AND MAINTAINED THROUGHOUT THE CONSTRUCTION PERIOD. THE CONTRACTOR SHALL BE RESPONSIBLE FOR CONSTRUCTION AND MAINTENANCE OF ALL EROSION CONTROL MEASURES THROUGHOUT THE CONSTRUCTION PERIOD.
 5. LAND DISTURBANCE SHALL BE KEPT TO THE MINIMUM NECESSARY FOR CONSTRUCTION.
 6. ALL EROSION CONTROL MEASURES SHALL BE INSTALLED AS SHOWN ON THIS PLAN AND MAINTAINED THROUGHOUT THE CONSTRUCTION PERIOD. THE CONTRACTOR SHALL BE RESPONSIBLE FOR CONSTRUCTION AND MAINTENANCE OF ALL EROSION CONTROL MEASURES THROUGHOUT THE CONSTRUCTION PERIOD.
 7. ALL CATCH BASINS SHALL BE PROTECTED WITH SILT SACKS, HYDRAULIC INLET PROTECTION, OR OTHER EROSION CONTROL MEASURES THROUGHOUT THE CONSTRUCTION PERIOD AND UNTIL ALL DISTURBED AREAS ARE THOROUGHLY STABILIZED.
 8. EROSION CONTROL MEASURES SHALL BE INSTALLED AS SHOWN ON THIS PLAN AND MAINTAINED THROUGHOUT THE CONSTRUCTION PERIOD. THE CONTRACTOR SHALL BE RESPONSIBLE FOR CONSTRUCTION AND MAINTENANCE OF ALL EROSION CONTROL MEASURES THROUGHOUT THE CONSTRUCTION PERIOD.
 9. ADDITIONAL EROSION CONTROL MEASURES SHALL BE INSTALLED AS SHOWN ON THIS PLAN AND MAINTAINED THROUGHOUT THE CONSTRUCTION PERIOD. THE CONTRACTOR SHALL BE RESPONSIBLE FOR CONSTRUCTION AND MAINTENANCE OF ALL EROSION CONTROL MEASURES THROUGHOUT THE CONSTRUCTION PERIOD.
 10. ALL SEDIMENTATION AND EROSION CONTROL MEASURES SHALL BE MAINTAINED IN EFFECTIVE CONDITION THROUGHOUT THE CONSTRUCTION PERIOD.
 11. SEDIMENT REMOVED SHALL BE DEPOSITED OF LEGALLY OFF-SITE.
 12. THE CONTRACTOR SHALL CAREFULLY COORDINATE THE PLACEMENT OF EROSION CONTROL LOGS WITH THE CITY OF MERIDEN. EROSION CONTROL LOGS SHALL BE INSTALLED AS SHOWN ON THIS PLAN AND MAINTAINED THROUGHOUT THE CONSTRUCTION PERIOD. THE CONTRACTOR SHALL BE RESPONSIBLE FOR CONSTRUCTION AND MAINTENANCE OF ALL EROSION CONTROL LOGS THROUGHOUT THE CONSTRUCTION PERIOD.
 13. ALL EROSION CONTROL MEASURES SHALL BE INSTALLED AS SHOWN ON THIS PLAN AND MAINTAINED THROUGHOUT THE CONSTRUCTION PERIOD. THE CONTRACTOR SHALL BE RESPONSIBLE FOR CONSTRUCTION AND MAINTENANCE OF ALL EROSION CONTROL MEASURES THROUGHOUT THE CONSTRUCTION PERIOD.
 14. THE CONTRACTOR SHALL UTILIZE APPROVED METHODS/MATERIALS FOR STABILIZATION OF ALL DISTURBED AREAS THROUGHOUT THE CONSTRUCTION PERIOD AND UNTIL ALL DISTURBED AREAS ARE THOROUGHLY STABILIZED.
 15. ALL DISTURBED AREAS SHALL BE STABILIZED WITH EROSION CONTROL MEASURES THROUGHOUT THE CONSTRUCTION PERIOD AND UNTIL ALL DISTURBED AREAS ARE THOROUGHLY STABILIZED.
 16. THE CONTRACTOR SHALL CAREFULLY COORDINATE THE PLACEMENT OF EROSION CONTROL LOGS WITH THE CITY OF MERIDEN. EROSION CONTROL LOGS SHALL BE INSTALLED AS SHOWN ON THIS PLAN AND MAINTAINED THROUGHOUT THE CONSTRUCTION PERIOD. THE CONTRACTOR SHALL BE RESPONSIBLE FOR CONSTRUCTION AND MAINTENANCE OF ALL EROSION CONTROL LOGS THROUGHOUT THE CONSTRUCTION PERIOD.
 17. KEEP ALL EXPOSED SOIL SURFACES CLEAN, SWEEP BEFORE FORECAST STORMS OR WEELY AS NECESSARY.
 18. TREAT ALL EXPOSED SURFACES IN ACCORDANCE WITH THE LANDSCAPE PLAN AND SPECIFICATIONS.
 19. ALL EROSION CONTROL LOGS SHALL BE INSTALLED AS SHOWN ON THIS PLAN AND MAINTAINED THROUGHOUT THE CONSTRUCTION PERIOD. THE CONTRACTOR SHALL BE RESPONSIBLE FOR CONSTRUCTION AND MAINTENANCE OF ALL EROSION CONTROL LOGS THROUGHOUT THE CONSTRUCTION PERIOD.
 20. ALL TRACKS LEAVING THE SITE MUST BE COVERED.
 21. ALL SEDIMENTATION AND EROSION CONTROL LOGS SHALL BE CHECKED WEEKLY AND AFTER EACH RAINFALL EVENT. NECESSARY REPAIRS SHALL BE MADE WITHOUT DELAY.
 22. AFTER ALL DISTURBED AREAS HAVE BEEN STABILIZED, EROSION CONTROL LOGS SHALL BE REMOVED FROM THE SITE AND DISPOSED OF IN ACCORDANCE WITH THE LANDSCAPE PLAN AND SPECIFICATIONS.
 23. AFTER ALL DISTURBED AREAS HAVE BEEN STABILIZED, EROSION CONTROL LOGS SHALL BE REMOVED FROM THE SITE AND DISPOSED OF IN ACCORDANCE WITH THE LANDSCAPE PLAN AND SPECIFICATIONS.
 24. INSTALL AND MAINTAIN EROSION CONTROL LOGS TO BRIDGE GAPS IN CURBS, WHERE INDICATED ON THE PLAN. EROSION CONTROL LOGS CAN BE SHOWN ON THE PLAN AND LOGS SHALL BE ADJUSTED THROUGHOUT THE CONSTRUCTION PERIOD TO MAINTAIN EFFECTIVE CONDITION THROUGHOUT THE CONSTRUCTION PERIOD. EROSION CONTROL LOGS SHALL BE INSTALLED AS SHOWN ON THIS PLAN AND MAINTAINED THROUGHOUT THE CONSTRUCTION PERIOD. THE CONTRACTOR SHALL BE RESPONSIBLE FOR CONSTRUCTION AND MAINTENANCE OF ALL EROSION CONTROL LOGS THROUGHOUT THE CONSTRUCTION PERIOD.





MERIDEN RETAIL HEALTH

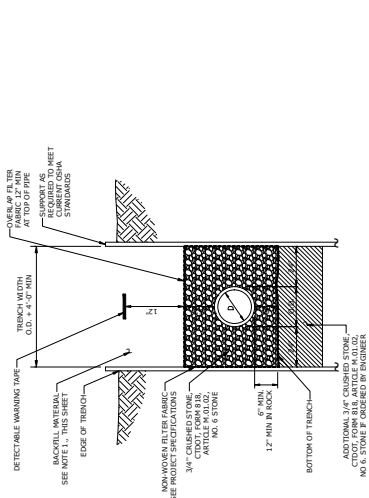
460 Lewis Avenue
Meriden, CT 06451

SITE DRAINAGE DETAILS

02/12/2021
AS SHOWN
20228-10

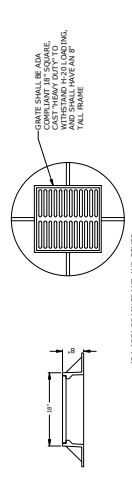
5

4



1. COMPACT BACKFILL TO AT LEAST 95% OF MAXIMUM DENSITY PER ASTM D1557.

HDPE & PVC PIPE TRENCH SECTION

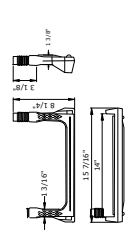


1. REINFORCING STEEL WELDED WIRE FABRIC SHALL CONFORM TO LATEST ASTM SPECIFICATION A185.
2. REINFORCING STEEL DIAPHRAGM BARS SHALL CONFORM TO LATEST ASTM SPECIFICATION A185.
3. CONCRETE COMPRESSIVE STRENGTH: 5,000 PSI - 28 DAYS.
4. MANHOLE STEP TO CONFORM TO OSHA AND ASTM SPECIFICATIONS.
5. MONOLITHIC BASE SECTION.

48\"/>

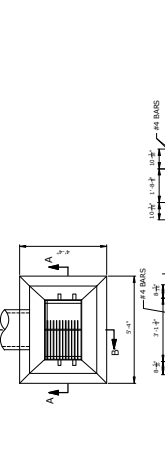
3

1. REINFORCEMENT SHALL CONFORM TO ASTM A618, GRADE 60.
2. DETAILS ON THIS SHEET SHOW STANDARD REINFORCEMENT. WELDED WIRE FABRIC WITH AN AREA EQUAL TO OR GREATER THAN THE REINFORCING SHOWN MAY BE SUBSTITUTED.
3. ALL REINFORCEMENT SHALL BE PLACED IN THE MIDDLE OF THE CONCRETE. WELDED WIRE FABRIC SHALL CONFORM TO ASTM STANDARD SPECIFICATIONS FOR HIGHWAY BRIDGES.
4. ALL REINFORCEMENT SHALL HAVE A MINIMUM CLEAR COVER OF 2\"/>
- 5. MINIMUM CONCRETE COMPRESSIVE STRENGTH (FC) 4,000PSI SHALL BE OBTAINED BEFORE PLACING CONCRETE.
- 6. BASES AND RISERS AT A DEPTH OF 20\"/>
- 7. SEE CONNECTICUT DEPARTMENT OF TRANSPORTATION STANDARD DRAWINGS 507-A FOR CATCH BASIN FRAMES AND GRATES.
- 8. ALL REINFORCEMENT SHALL BE PLACED IN THE MIDDLE OF THE CONCRETE. WELDED WIRE FABRIC SHALL CONFORM TO ASTM STANDARD SPECIFICATIONS FOR HIGHWAY BRIDGES.
- 9. RISERS SHALL NEVER HAVE CORNER PIPE ENTRIES, WHERE THE ALIGNMENT OF THE PIPE WITH THE RISING OF THE CONCRETE OF THE CATCH BASIN COULD BE CHANGED AND THE STRUCTURE OF THE CONCRETE OF THE CATCH BASIN COULD BE WEAKENED.
- 10. ALL PIPE ENTRIES SHALL BE CLOSED USING MATERIALS WHICH CONFORM TO STATE OF CONNECTICUT STANDARD SPECIFICATIONS FOR HIGHWAY BRIDGES. THE CONTRACTOR SHALL BE RESPONSIBLE FOR OBTAINING THE LATEST STATE OF CONNECTICUT STANDARD SPECIFICATIONS FOR PIPE ENTRIES. ALL PIPE ENTRIES SHALL BE PROTECTED BY A REDUCED WALL THICKNESS.
- 11. THE LATEST STATE OF CONNECTICUT STANDARD SPECIFICATIONS AND SUPPLEMENTALS SHALL GOVERN.
- 12. ALL REINFORCEMENT SHALL BE PLACED IN THE MIDDLE OF THE CONCRETE. WELDED WIRE FABRIC SHALL REMAIN THE SAME (THE 1/2\"/>
- 13. BUTYL RUBBER JOINT SEAL SHALL CONFORM TO ASTM A108 AND MATERIAL SHALL CONFORM TO THE LATEST STATE OF CONNECTICUT STANDARD SPECIFICATIONS MATERIAL SECTION.
- 14. SHORING AND TEMPORARY REINFORCEMENT SHALL BE AT LEAST 1/2\"/>
- 15. THE DETAILS SHOWN IN THE MANUAL FOR THE PRECAST CONCRETE BOARD STRUCTURES SHALL ALSO BE USED FOR CONVERTING MANHOLES TO CATCH BASINS.



MANHOLE RING

NO SCALE

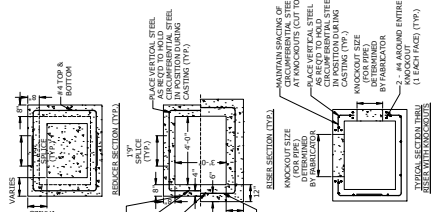


1. ALTERNATE CONSTRUCTION WITH FULL CORNERS BACK TO BE USED AT LOCATIONS ADJACENT TO EXISTING OR PROPOSED

CONNECTICUT DEPARTMENT OF TRANSPORTATION TYPE 'C-C' CATCH BASIN TOP

NO SCALE

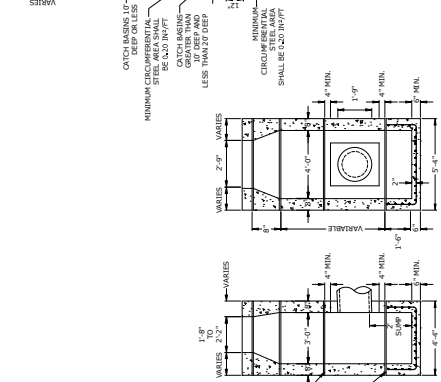
2



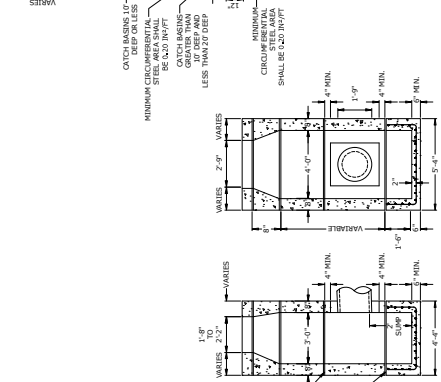
ON-SITE TYPE 'C-C' CATCH BASIN

NO SCALE

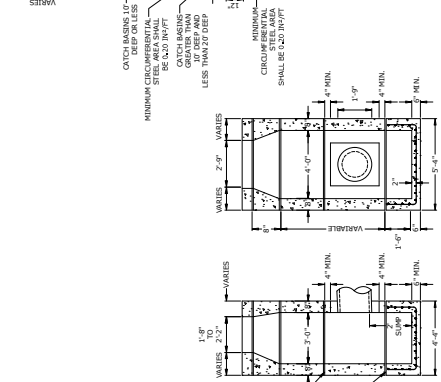
1



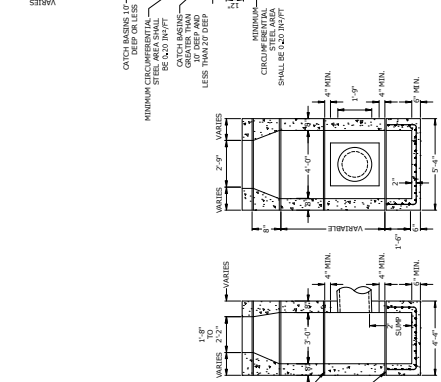
1



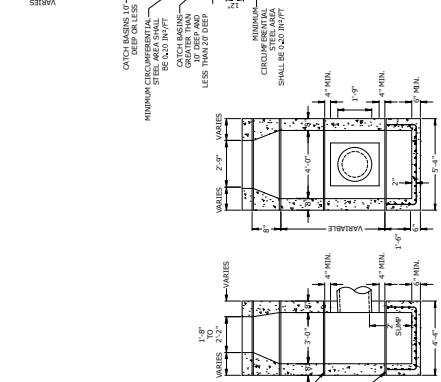
2



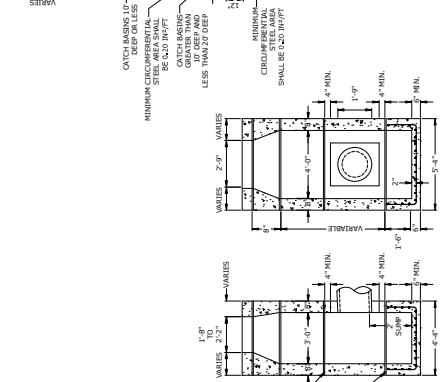
3



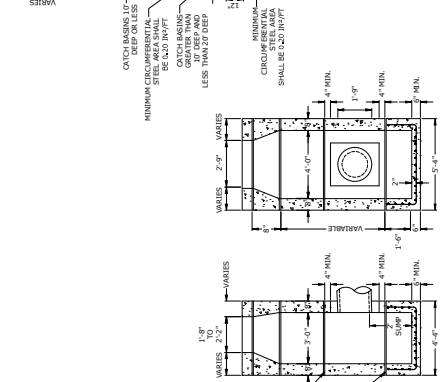
4



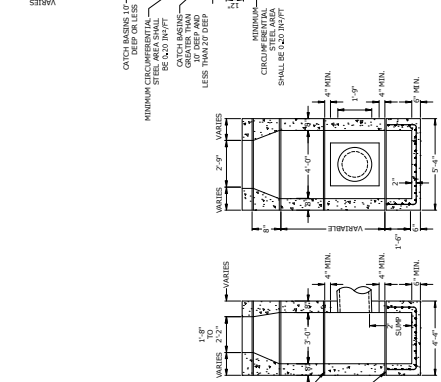
5



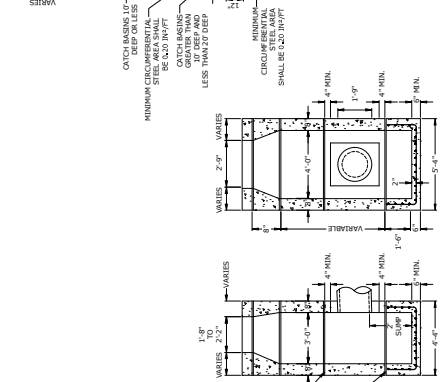
6



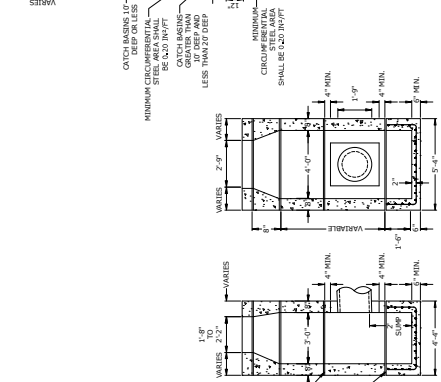
7



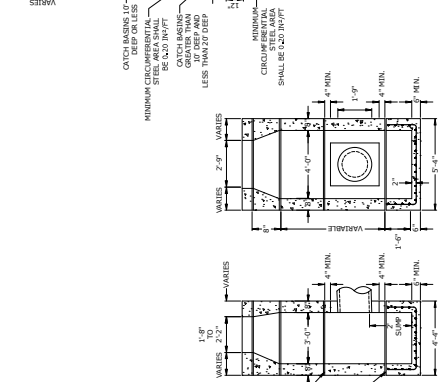
8



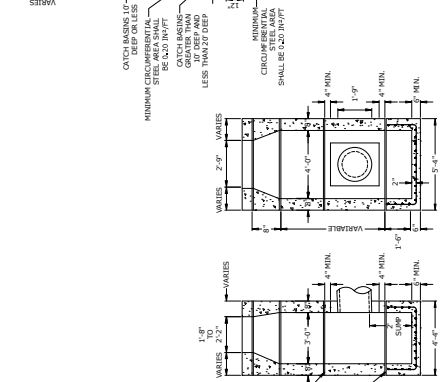
9



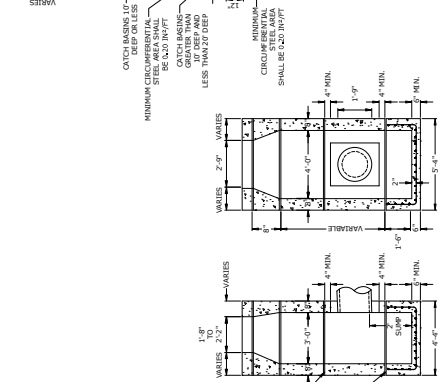
10



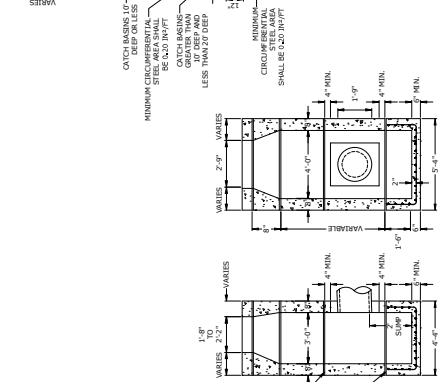
11



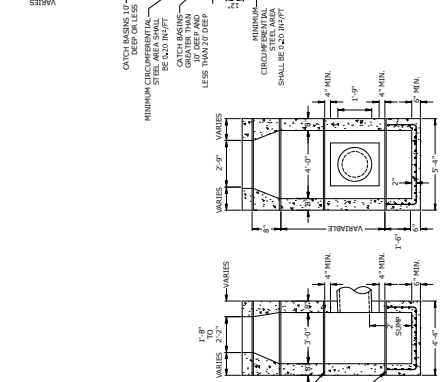
12



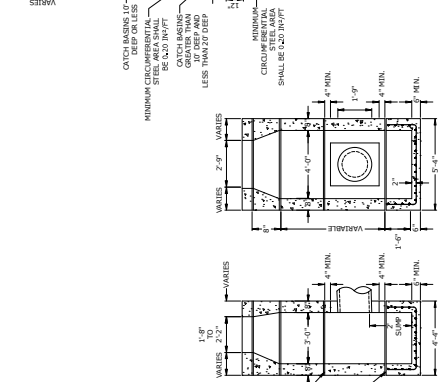
13



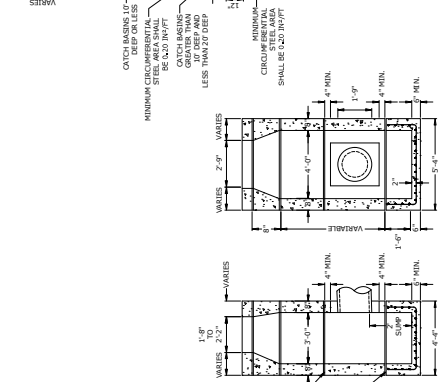
14



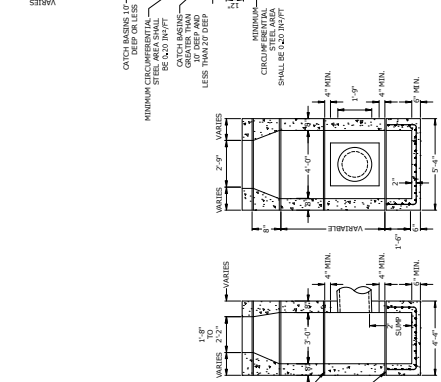
15



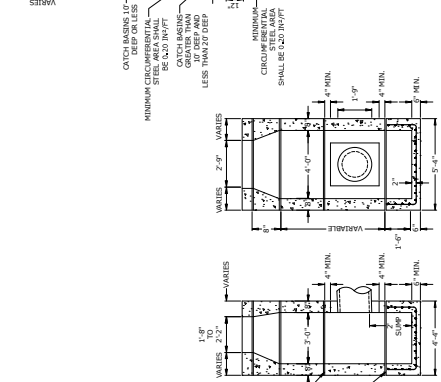
16



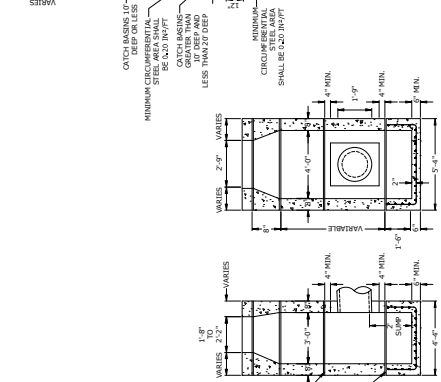
17



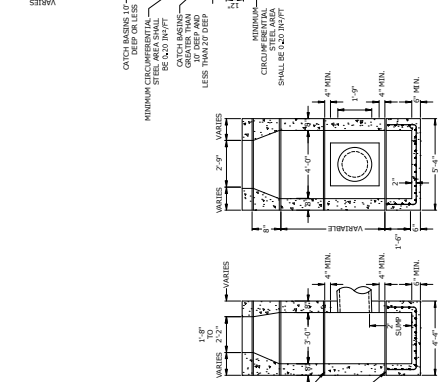
18



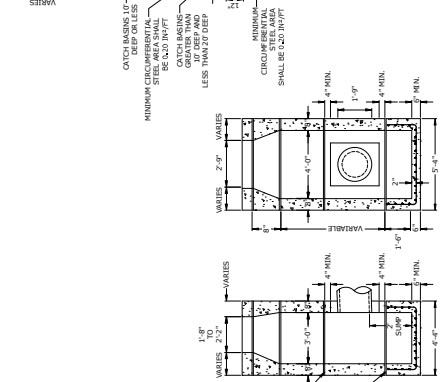
19



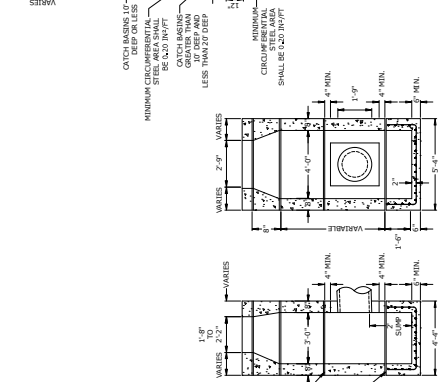
20



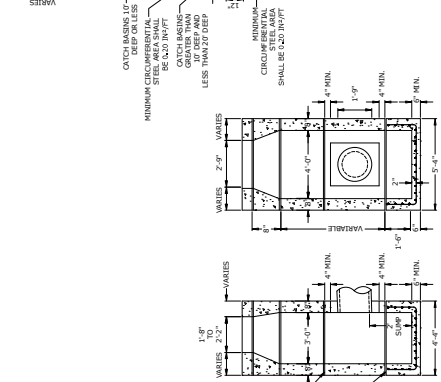
21



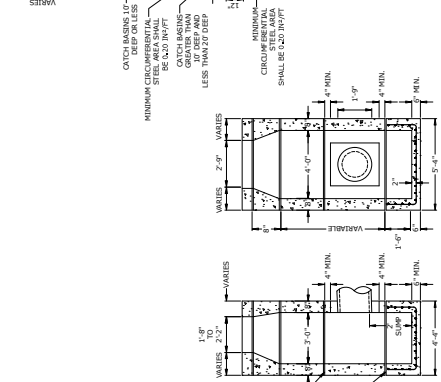
22



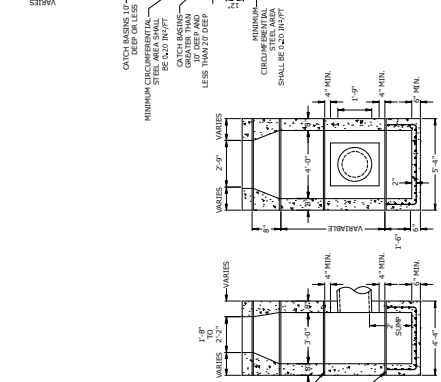
23



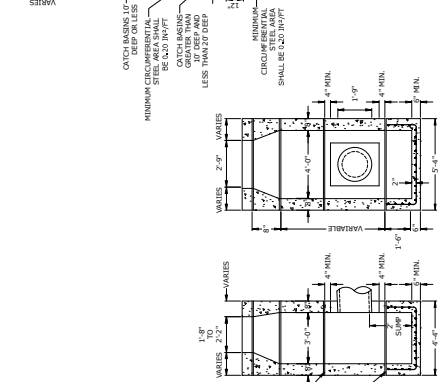
24



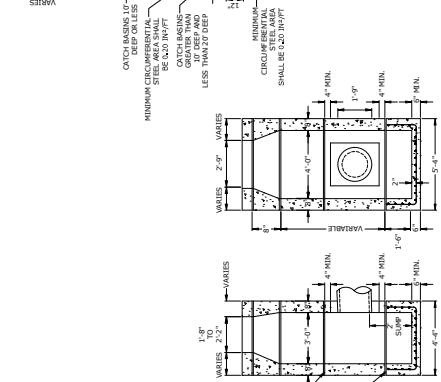
25



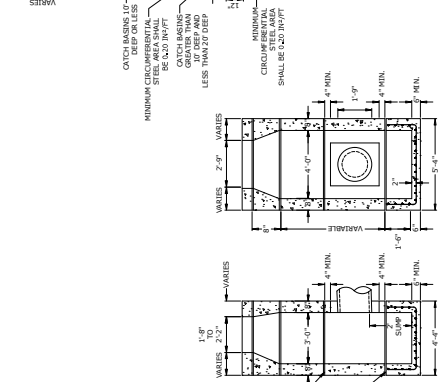
26



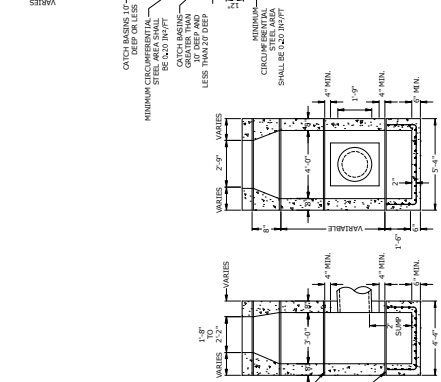
27



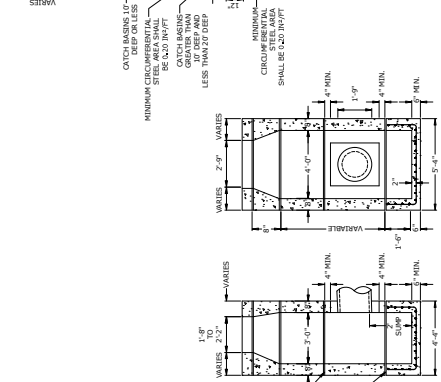
28



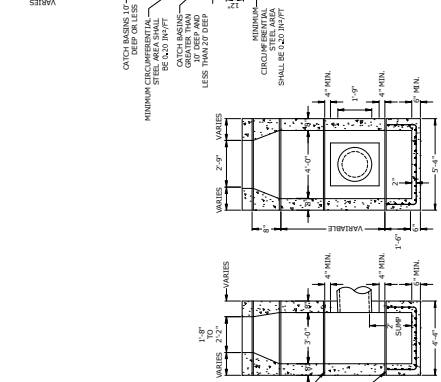
29



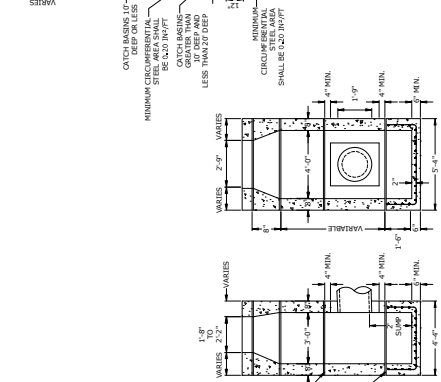
30



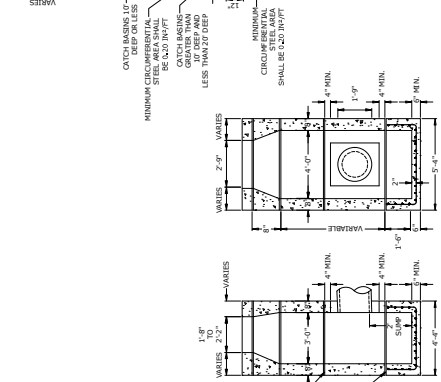
31



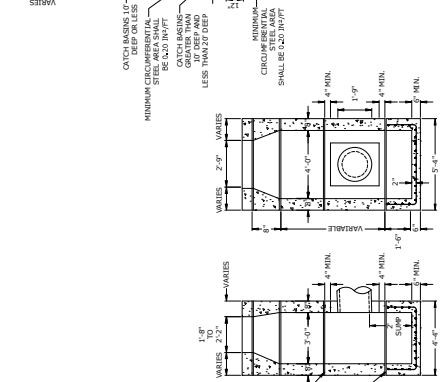
32



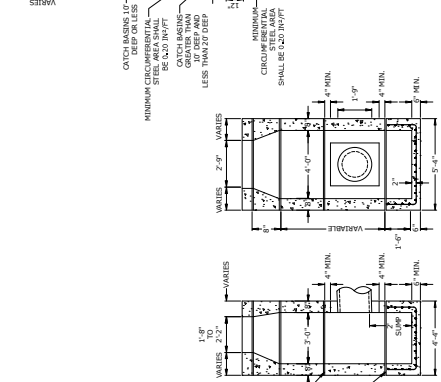
33



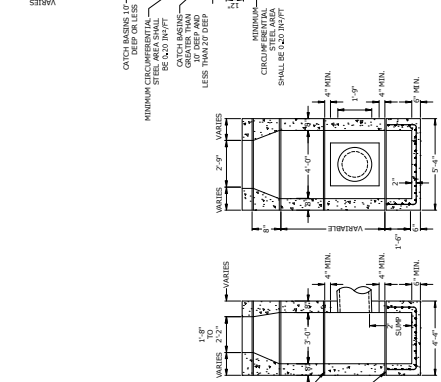
34



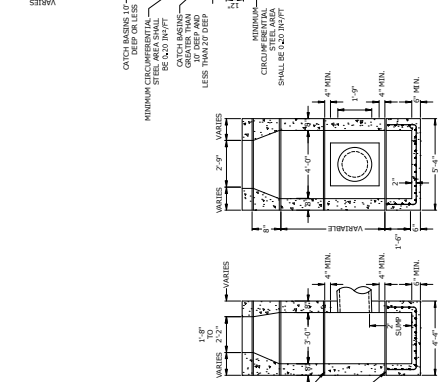
35



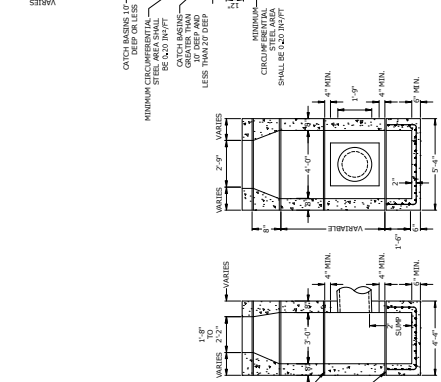
36



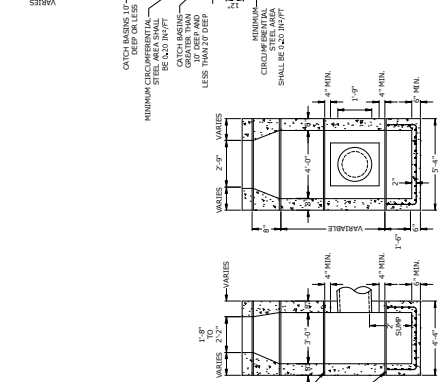
37



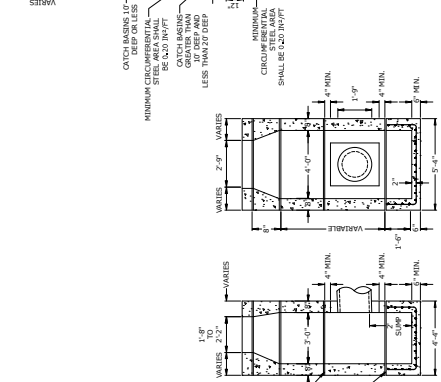
38



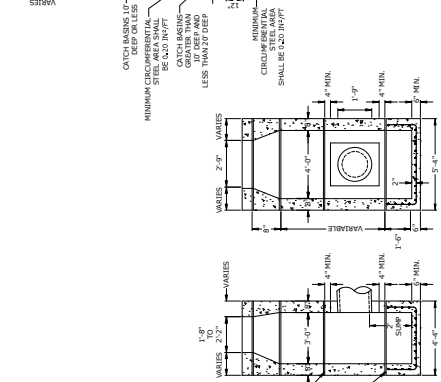
39



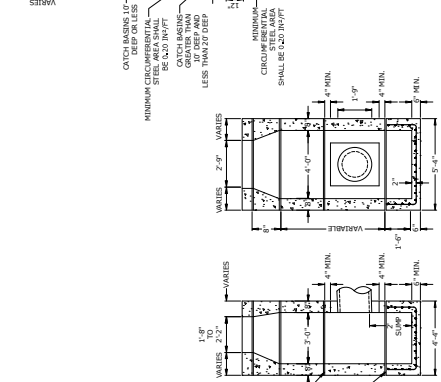
40



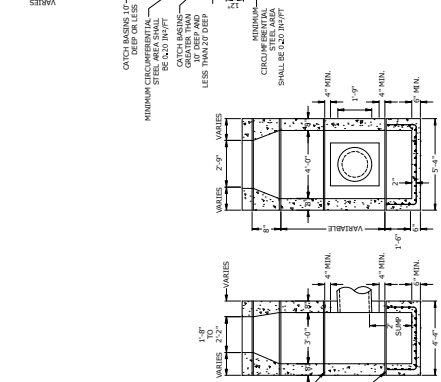
41



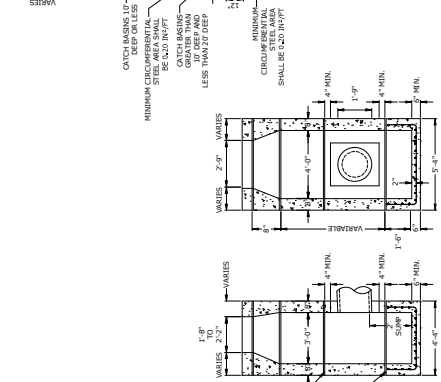
42



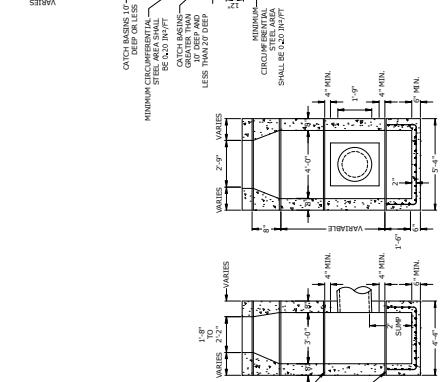
43



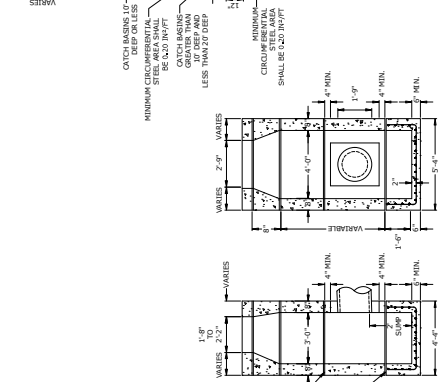
44



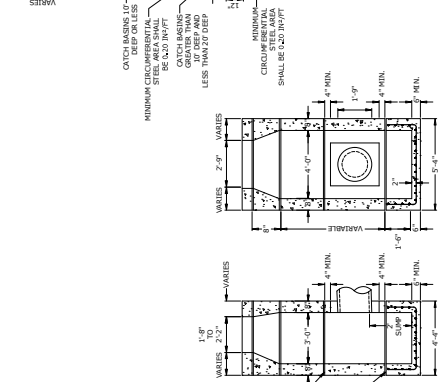
45



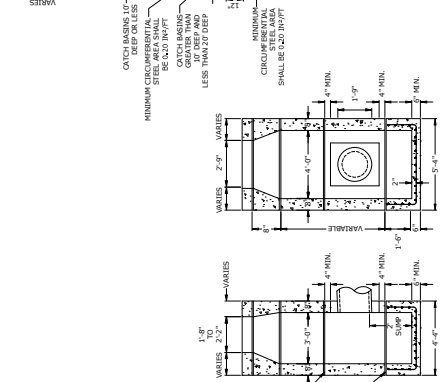
46



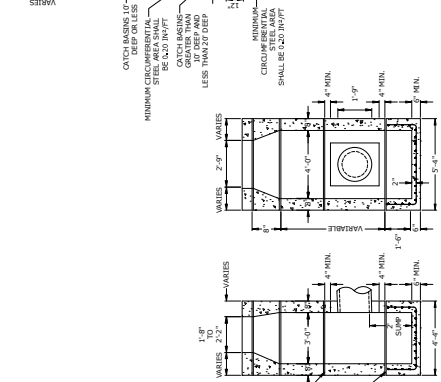
47



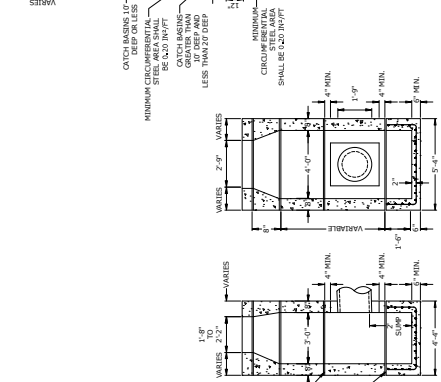
48



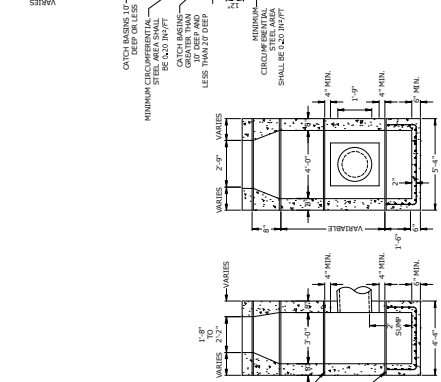
49



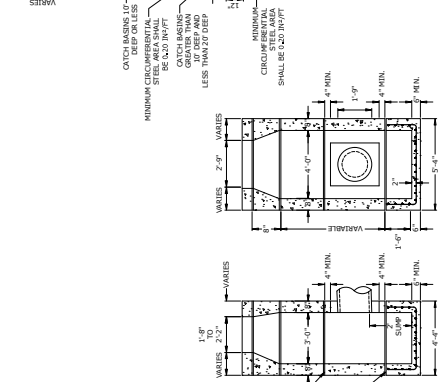
50



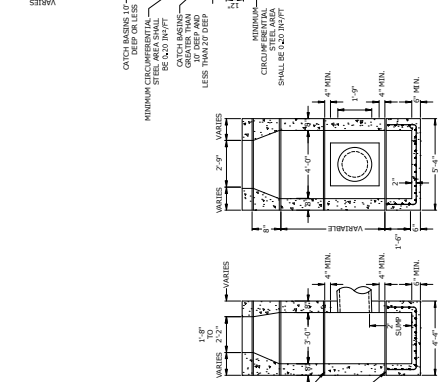
51



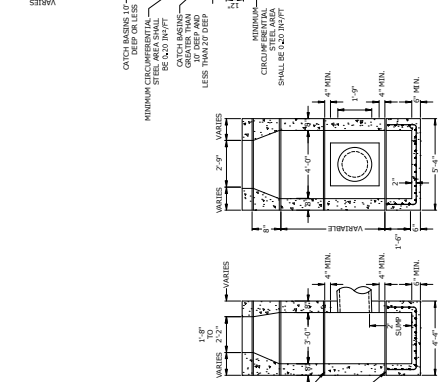
52



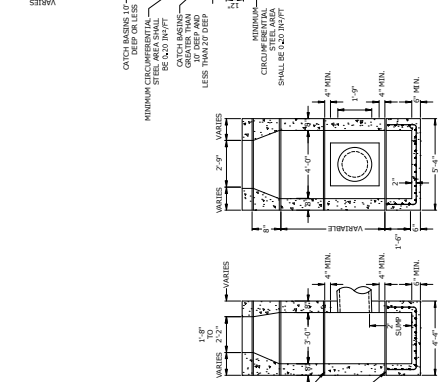
53



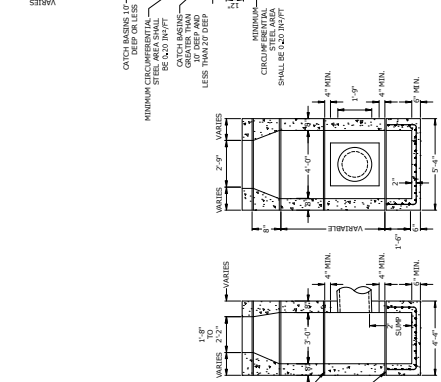
54



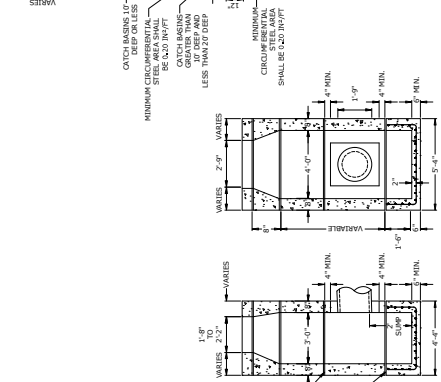
55



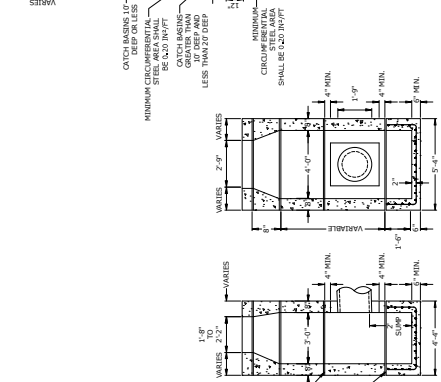
56



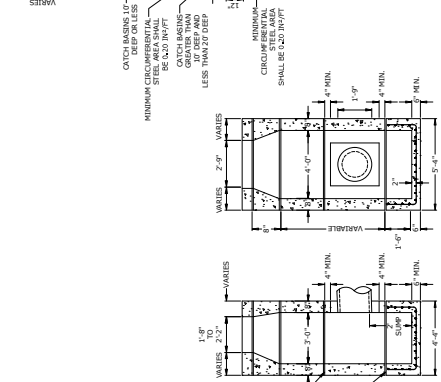
57



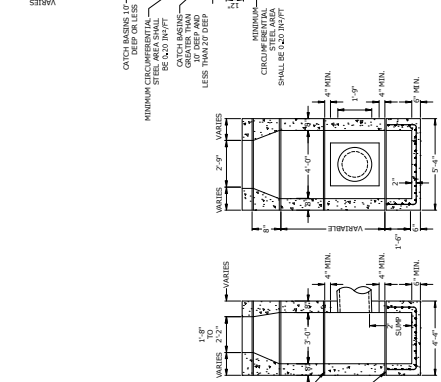
58



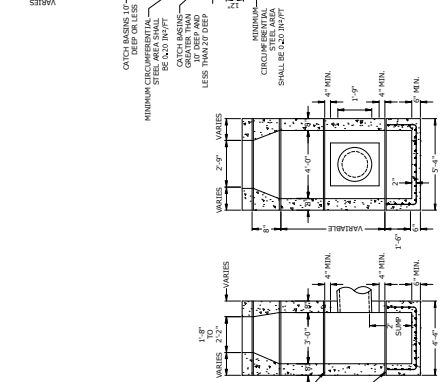
59



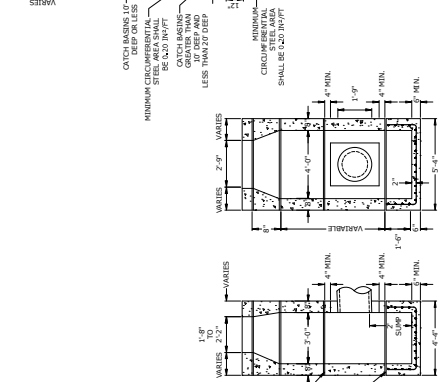
60



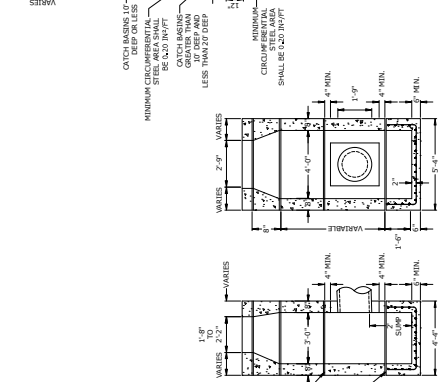
61



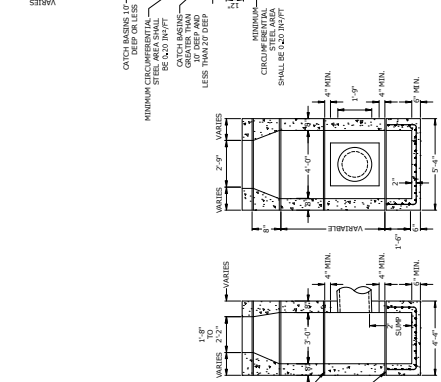
62



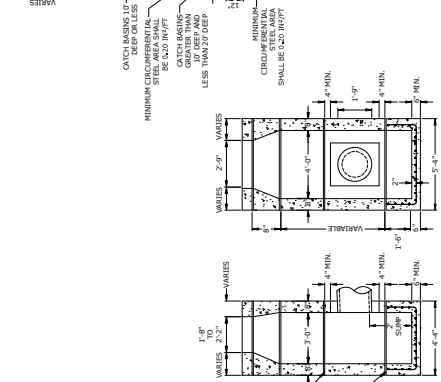
63



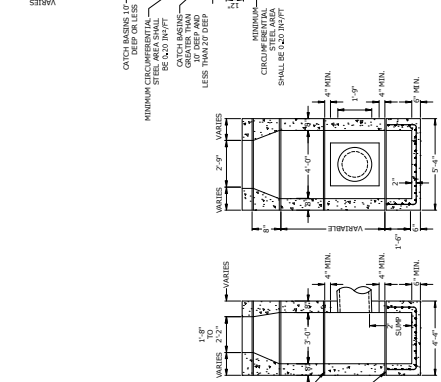
64



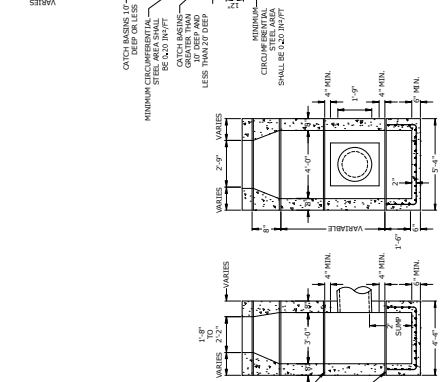
65



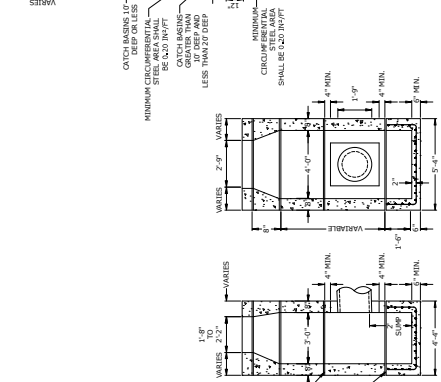
66



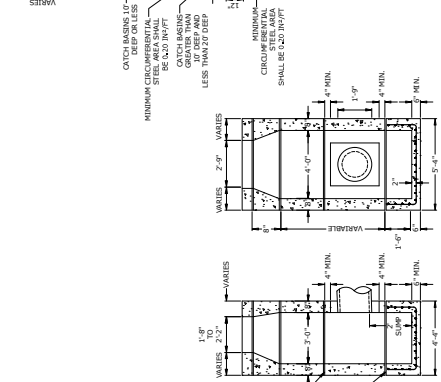
67



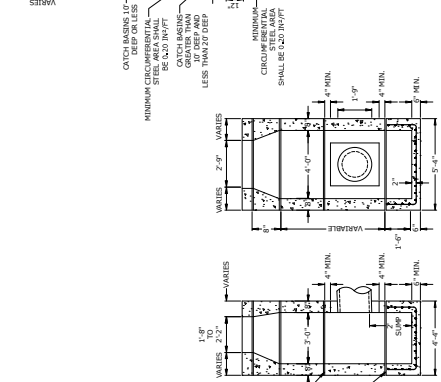
68



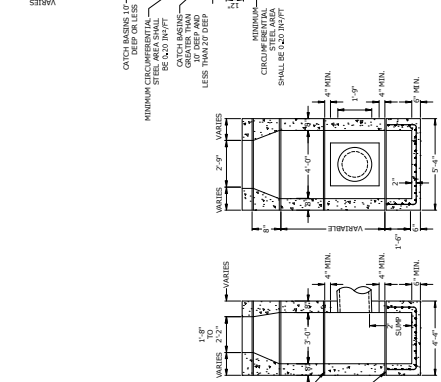
69



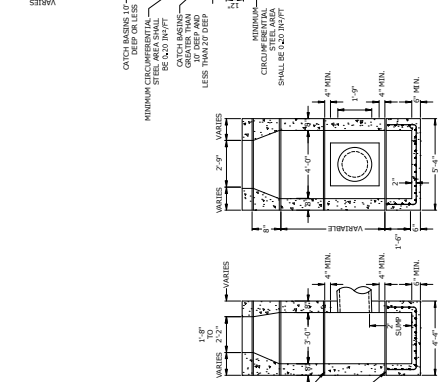
70



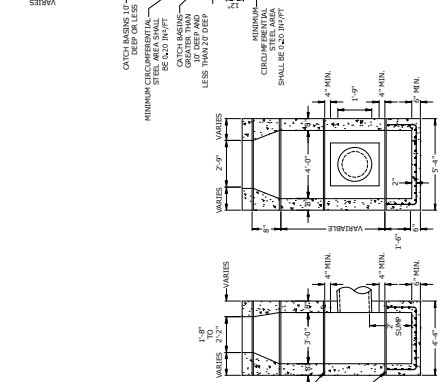
71



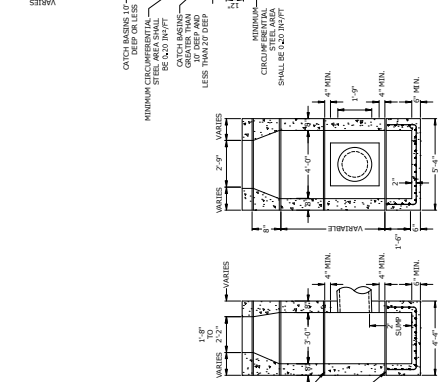
72



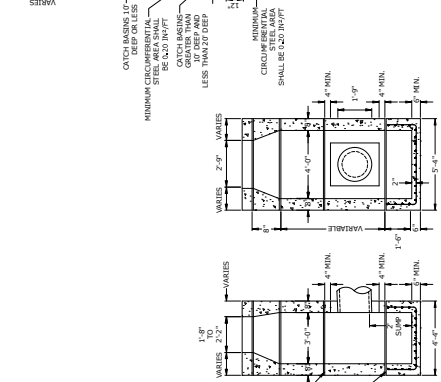
73



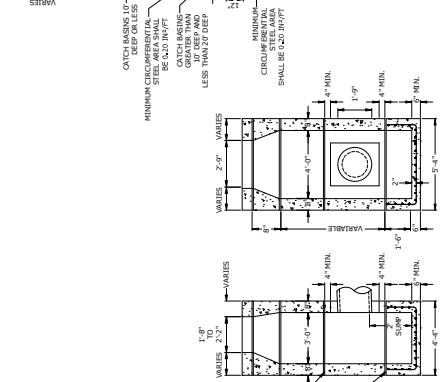
74



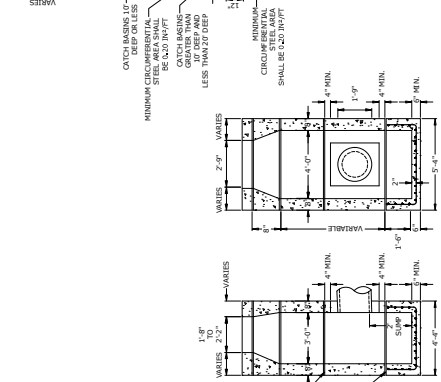
75



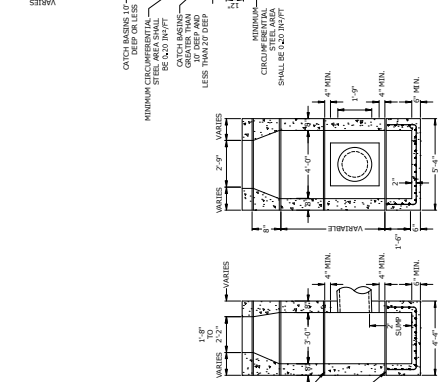
76



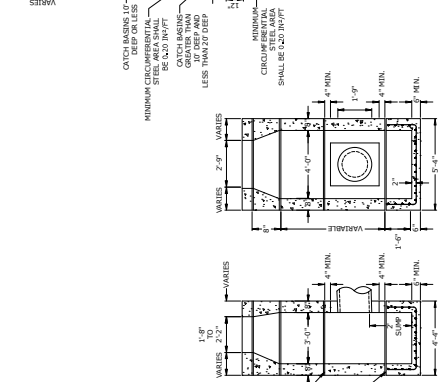
77



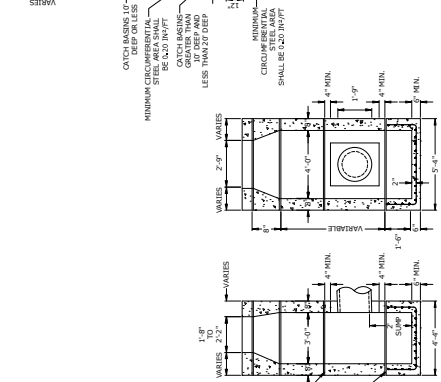
78



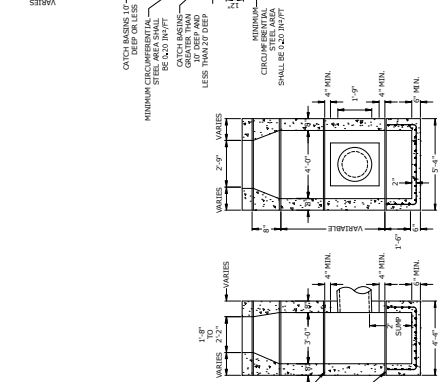
79



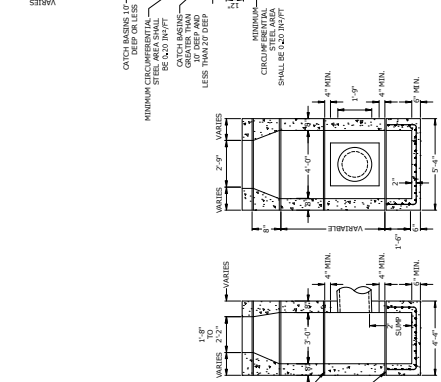
80



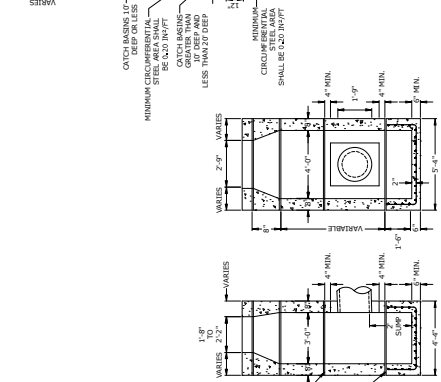
81



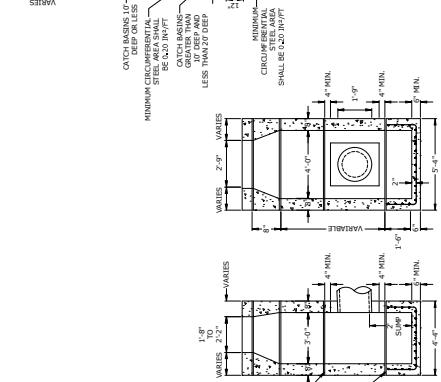
82



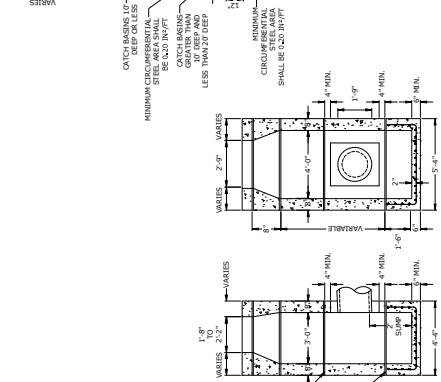
83



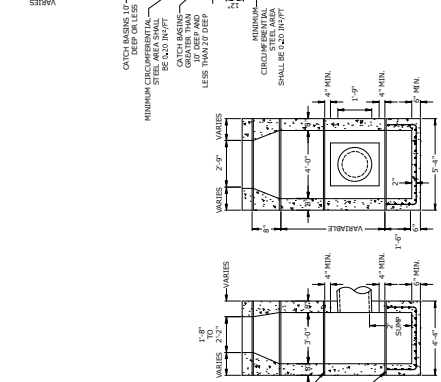
84



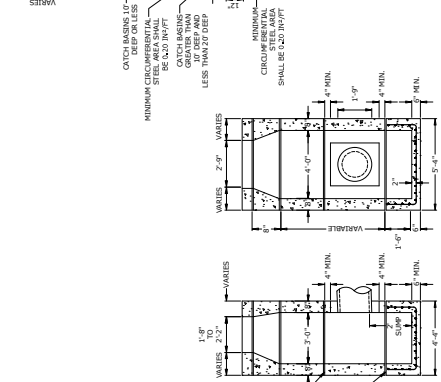
85



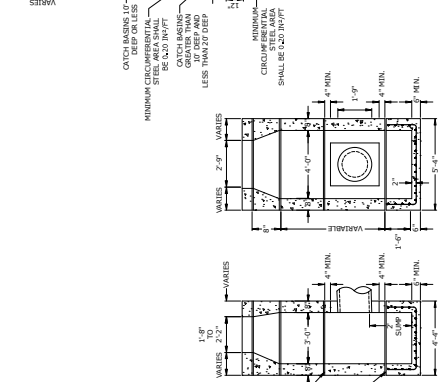
86



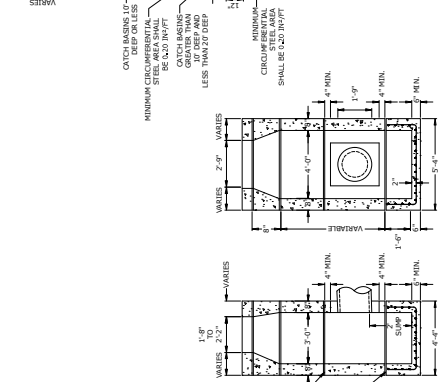
87



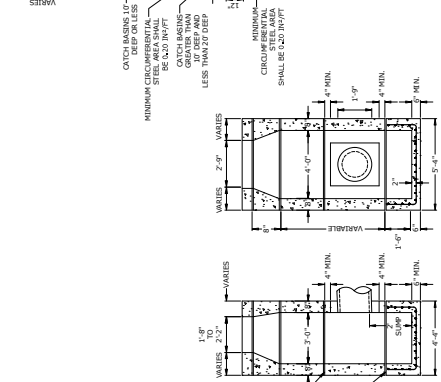
88



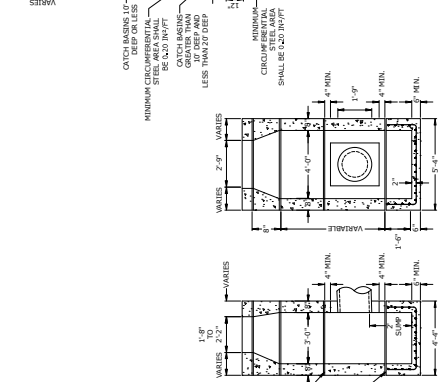
89

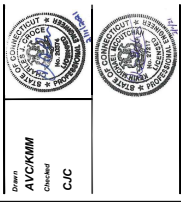


90



91

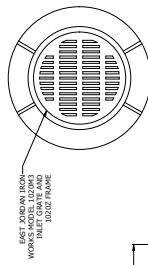




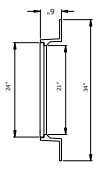
MERIDEN RETAIL HEALTH

460 Lewis Avenue
Meriden, CT 06451

	<p>DATE: 02/12/2021</p> <p>PROJECT: AS SHOW</p> <p>NO. 2028-10</p>
--	--

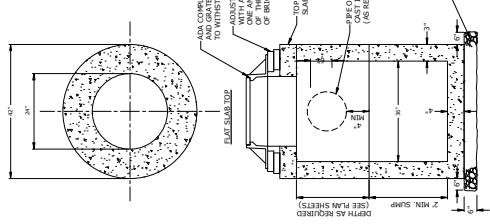


BEST DRAWN FROM WORKING DRAWING INLET GRATE AND JOIST FRAME



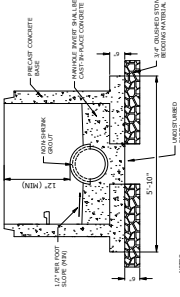
FRAME AND COVER

- PRECAST CONCRETE STORM SEWER STRUCTURE NOTES:**
1. REINFORCING STEEL WELDED WIRE FABRIC CONFORMS TO LATEST ASTM SPECIFICATION A185.
 2. REINFORCING STEEL DEFORMED BARS SHALL CONFORM TO ASTM SPECIFICATION A618.
 3. CONCRETE COMPRESSIVE STRENGTH - 4000 PSI AT 28 DAYS.
 4. METHOD OF MANUFACTURE: WET CAST.
 5. SECTION IS MONOLITHIC.
 6. DESIGN LOAD: ASDH R-20.
 7. SET FLAT SLAB IN FULL BED OF MORTAR.
 8. FASTENERS TO JOISTS SHALL BE CAPABLE OF WITHSTANDING 200 LB. POINT LOADS.
 9. INSTALL FRAMES AND GRATES TO GRADE WITH MIN. 2" AIR SPACE ABOVE GRATE.
 10. FLAT SLAB TOP SHALL BE 6" THICK MIN.



EDGE SLAB TOP
TOP SLAB
PIPE OPENINGS
PEENED BARS (AS REQUIRED)
BEDDING MATERIAL, 4" MIN. THICK, COMPACTED TO 95% (SEE PLAN SHEETS)
2" MIN. SUMP
REINFORCING STEEL WELDED WIRE FABRIC CONFORMS TO LATEST ASTM SPECIFICATION A185

ON-SITE YARD DRAIN DETAIL
NOT TO SCALE

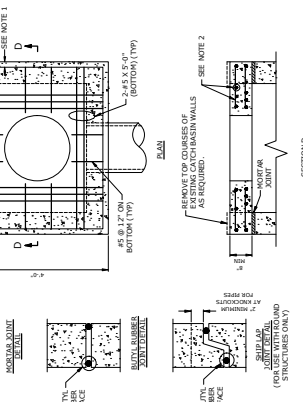


STORM DRAINAGE PIPE MANHOLE DETAIL
NOT TO SCALE

NOTES:

1. PREPARE 4" DIAMETER MANHOLE.
2. REINFORCE WITH WELDED WIRE FABRIC CONFORMING TO LATEST ASTM SPECIFICATION A185.
3. CONCRETE COMPRESSIVE STRENGTH - 4000 PSI AT 28 DAYS.
4. METHOD OF MANUFACTURE: WET CAST.
5. SECTION IS MONOLITHIC.
6. DESIGN LOAD: ASDH R-20.
7. SET FLAT SLAB IN FULL BED OF MORTAR.
8. FASTENERS TO JOISTS SHALL BE CAPABLE OF WITHSTANDING 200 LB. POINT LOADS.
9. INSTALL FRAMES AND GRATES TO GRADE WITH MIN. 2" AIR SPACE ABOVE GRATE.
10. FLAT SLAB TOP SHALL BE 6" THICK MIN.

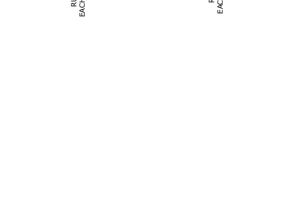
STORM DRAINAGE PIPE MANHOLE DETAIL
NOT TO SCALE



STORM DRAINAGE PIPE MANHOLE DETAIL
NOT TO SCALE

NOTES:

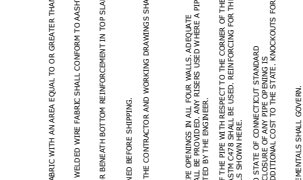
1. REINFORCEMENT SHALL CONFORM TO ASTM A618, GRADE 60.
2. DETAILS ON THIS SHEET SHOW STANDARD REINFORCEMENT. WELDED WIRE FABRIC WITH AN AREA EQUAL TO OR GREATER THAN THE REINFORCEMENT SHALL BE USED.
3. STANDARD SPECIFICATIONS FOR HIGHWAY BRIDGES.
4. ALL REINFORCEMENT SHALL HAVE A MINIMUM CLEAR COVER OF 2" EXCEPT FOR BENEATH BOTTOM REINFORCEMENT IN TOP SLABS, WHERE THE MINIMUM MAY BE 1".
5. MINIMUM CONCRETE COMPRESSIVE STRENGTH - 4000 PSI SHALL BE OBTAINED BEFORE SHIPPING.
6. BARS AND RISERS AT A DEPTH OF 2" OR GREATER SHALL BE DESIGNED BY THE CONTRACTOR AND WORKING DRAWINGS SHALL BE PROVIDED.
7. SEE SHEET C-31 FOR CATCH BASIN FRAMES AND GRATES.
8. FOR TOP MANHOLE OPENINGS, RISERS MAY BE PRECASTED WITH PIPE GROUNDS IN ALL FOUR WALLS. ADEQUATE REINFORCING AROUND PIPE OPENINGS TO CONFORM TO THESE PLANS SHALL BE PROVIDED. ANY RISERS USED WHERE A PIPE OPENING IS TO REMAIN IN PLACE MUST BE FORMED UP WITH BRICK AS DIRECTED BY THE ENGINEER.
9. CATCH BASIN CANNOT BE CHANGED. A ROUND STRUCTURE CORRESPONDING TO ASTM C478 SHALL BE USED. REINFORCING ON THE ROUND TOP SLAB WITH A RECTANGULAR OPENING SHALL CONFORM TO DETAILS SHOWN HERE.
10. REINFORCING SHALL BE WELDED WIRE FABRIC CONFORMING TO LATEST ASTM SPECIFICATION A185. REINFORCING SHALL BE WELDED WIRE FABRIC CONFORMING TO LATEST ASTM SPECIFICATION A185. REINFORCING SHALL BE WELDED WIRE FABRIC CONFORMING TO LATEST ASTM SPECIFICATION A185. REINFORCING SHALL BE WELDED WIRE FABRIC CONFORMING TO LATEST ASTM SPECIFICATION A185.
11. THE LATEST STATE OF CONNECTICUT STANDARD SPECIFICATIONS AND SUPPLEMENTALS SHALL GOVERN.
12. FOR ADDITIONAL DETAILS, SEE OTHER CATCH BASIN SHEETS.
13. WALL THICKNESS OF ALL CATCH BASIN SHALL BE 12" THICK. INSIDE DIMENSION SHALL REMAIN THE SAME. (THE 12" THICKNESS SHALL START AFTER THE FIRST JOINT).
14. BUTYL RUBBER JOINT SEAL SHALL CONFORM TO ASTM D-198 AND MOTOR SEAL CONFORM TO THE LATEST STATE OF CONNECTICUT STANDARD SPECIFICATIONS MATERIAL SECTION 811.04.
15. REINFORCEMENT PROVIDED SHALL BE AT LEAST 0.33 FT IN EACH DIRECTION. THE MAXIMUM SPACING OF THIS REINFORCEMENT SHALL NOT EXCEED 18 INCHES.
16. CONNECTIONS SHOWN IN THIS PLAN VIEW FOR THE PRECAST CONCRETE ROUND STRUCTURES SHALL ALSO BE USED FOR CONCRETE MANHOLES TO CATCH BASIN.



STORM DRAINAGE PIPE MANHOLE DETAIL
NOT TO SCALE

NOTES:

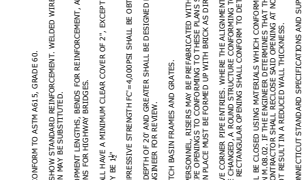
1. REINFORCEMENT SHALL HAVE A MINIMUM CLEAR COVER OF 2" EXCEPT FOR BENEATH BOTTOM REINFORCEMENT IN TOP SLABS, WHERE THE MINIMUM MAY BE 1".
2. SHRINKAGE AND TEMPERATURE REINFORCEMENT SHALL BE PROVIDED IN THE TOPS OF ALL CONCRETE SLABS. THE MAXIMUM SPACING OF THIS REINFORCEMENT SHALL NOT EXCEED 18 INCHES.



STORM DRAINAGE PIPE MANHOLE DETAIL
NOT TO SCALE

NOTES:

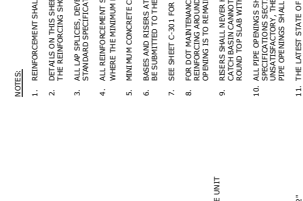
1. REINFORCEMENT SHALL HAVE A MINIMUM CLEAR COVER OF 2" EXCEPT FOR BENEATH BOTTOM REINFORCEMENT IN TOP SLABS, WHERE THE MINIMUM MAY BE 1".
2. SHRINKAGE AND TEMPERATURE REINFORCEMENT SHALL BE PROVIDED IN THE TOPS OF ALL CONCRETE SLABS. THE MAXIMUM SPACING OF THIS REINFORCEMENT SHALL NOT EXCEED 18 INCHES.



STORM DRAINAGE PIPE MANHOLE DETAIL
NOT TO SCALE

NOTES:

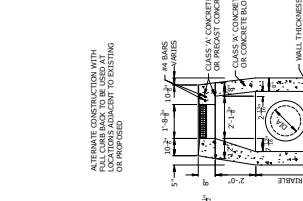
1. REINFORCEMENT SHALL HAVE A MINIMUM CLEAR COVER OF 2" EXCEPT FOR BENEATH BOTTOM REINFORCEMENT IN TOP SLABS, WHERE THE MINIMUM MAY BE 1".
2. SHRINKAGE AND TEMPERATURE REINFORCEMENT SHALL BE PROVIDED IN THE TOPS OF ALL CONCRETE SLABS. THE MAXIMUM SPACING OF THIS REINFORCEMENT SHALL NOT EXCEED 18 INCHES.



STORM DRAINAGE PIPE MANHOLE DETAIL
NOT TO SCALE

NOTES:

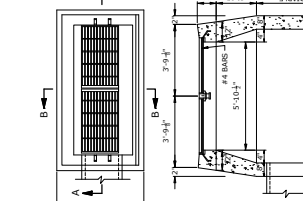
1. REINFORCEMENT SHALL HAVE A MINIMUM CLEAR COVER OF 2" EXCEPT FOR BENEATH BOTTOM REINFORCEMENT IN TOP SLABS, WHERE THE MINIMUM MAY BE 1".
2. SHRINKAGE AND TEMPERATURE REINFORCEMENT SHALL BE PROVIDED IN THE TOPS OF ALL CONCRETE SLABS. THE MAXIMUM SPACING OF THIS REINFORCEMENT SHALL NOT EXCEED 18 INCHES.



STORM DRAINAGE PIPE MANHOLE DETAIL
NOT TO SCALE

NOTES:

1. REINFORCEMENT SHALL HAVE A MINIMUM CLEAR COVER OF 2" EXCEPT FOR BENEATH BOTTOM REINFORCEMENT IN TOP SLABS, WHERE THE MINIMUM MAY BE 1".
2. SHRINKAGE AND TEMPERATURE REINFORCEMENT SHALL BE PROVIDED IN THE TOPS OF ALL CONCRETE SLABS. THE MAXIMUM SPACING OF THIS REINFORCEMENT SHALL NOT EXCEED 18 INCHES.



STORM DRAINAGE PIPE MANHOLE DETAIL
NOT TO SCALE

NOTES:

1. REINFORCEMENT SHALL HAVE A MINIMUM CLEAR COVER OF 2" EXCEPT FOR BENEATH BOTTOM REINFORCEMENT IN TOP SLABS, WHERE THE MINIMUM MAY BE 1".
2. SHRINKAGE AND TEMPERATURE REINFORCEMENT SHALL BE PROVIDED IN THE TOPS OF ALL CONCRETE SLABS. THE MAXIMUM SPACING OF THIS REINFORCEMENT SHALL NOT EXCEED 18 INCHES.



STORM DRAINAGE PIPE MANHOLE DETAIL
NOT TO SCALE

NOTES:

1. REINFORCEMENT SHALL HAVE A MINIMUM CLEAR COVER OF 2" EXCEPT FOR BENEATH BOTTOM REINFORCEMENT IN TOP SLABS, WHERE THE MINIMUM MAY BE 1".
2. SHRINKAGE AND TEMPERATURE REINFORCEMENT SHALL BE PROVIDED IN THE TOPS OF ALL CONCRETE SLABS. THE MAXIMUM SPACING OF THIS REINFORCEMENT SHALL NOT EXCEED 18 INCHES.

SITE DRAINAGE DETAILS

DATE: 02/12/2021
PROJECT: AS SHOW
NO. 2028-10



STORM DRAINAGE PIPE MANHOLE DETAIL
NOT TO SCALE

NOTES:

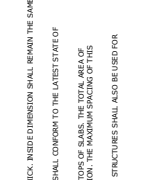
1. REINFORCEMENT SHALL HAVE A MINIMUM CLEAR COVER OF 2" EXCEPT FOR BENEATH BOTTOM REINFORCEMENT IN TOP SLABS, WHERE THE MINIMUM MAY BE 1".
2. SHRINKAGE AND TEMPERATURE REINFORCEMENT SHALL BE PROVIDED IN THE TOPS OF ALL CONCRETE SLABS. THE MAXIMUM SPACING OF THIS REINFORCEMENT SHALL NOT EXCEED 18 INCHES.



STORM DRAINAGE PIPE MANHOLE DETAIL
NOT TO SCALE

NOTES:

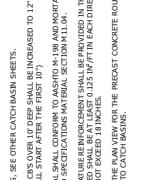
1. REINFORCEMENT SHALL HAVE A MINIMUM CLEAR COVER OF 2" EXCEPT FOR BENEATH BOTTOM REINFORCEMENT IN TOP SLABS, WHERE THE MINIMUM MAY BE 1".
2. SHRINKAGE AND TEMPERATURE REINFORCEMENT SHALL BE PROVIDED IN THE TOPS OF ALL CONCRETE SLABS. THE MAXIMUM SPACING OF THIS REINFORCEMENT SHALL NOT EXCEED 18 INCHES.



STORM DRAINAGE PIPE MANHOLE DETAIL
NOT TO SCALE

NOTES:

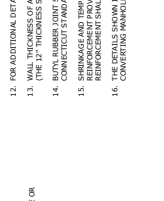
1. REINFORCEMENT SHALL HAVE A MINIMUM CLEAR COVER OF 2" EXCEPT FOR BENEATH BOTTOM REINFORCEMENT IN TOP SLABS, WHERE THE MINIMUM MAY BE 1".
2. SHRINKAGE AND TEMPERATURE REINFORCEMENT SHALL BE PROVIDED IN THE TOPS OF ALL CONCRETE SLABS. THE MAXIMUM SPACING OF THIS REINFORCEMENT SHALL NOT EXCEED 18 INCHES.



STORM DRAINAGE PIPE MANHOLE DETAIL
NOT TO SCALE

NOTES:

1. REINFORCEMENT SHALL HAVE A MINIMUM CLEAR COVER OF 2" EXCEPT FOR BENEATH BOTTOM REINFORCEMENT IN TOP SLABS, WHERE THE MINIMUM MAY BE 1".
2. SHRINKAGE AND TEMPERATURE REINFORCEMENT SHALL BE PROVIDED IN THE TOPS OF ALL CONCRETE SLABS. THE MAXIMUM SPACING OF THIS REINFORCEMENT SHALL NOT EXCEED 18 INCHES.



STORM DRAINAGE PIPE MANHOLE DETAIL
NOT TO SCALE

NOTES:

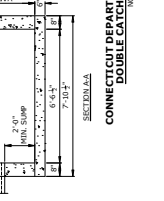
1. REINFORCEMENT SHALL HAVE A MINIMUM CLEAR COVER OF 2" EXCEPT FOR BENEATH BOTTOM REINFORCEMENT IN TOP SLABS, WHERE THE MINIMUM MAY BE 1".
2. SHRINKAGE AND TEMPERATURE REINFORCEMENT SHALL BE PROVIDED IN THE TOPS OF ALL CONCRETE SLABS. THE MAXIMUM SPACING OF THIS REINFORCEMENT SHALL NOT EXCEED 18 INCHES.



STORM DRAINAGE PIPE MANHOLE DETAIL
NOT TO SCALE

NOTES:

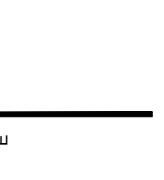
1. REINFORCEMENT SHALL HAVE A MINIMUM CLEAR COVER OF 2" EXCEPT FOR BENEATH BOTTOM REINFORCEMENT IN TOP SLABS, WHERE THE MINIMUM MAY BE 1".
2. SHRINKAGE AND TEMPERATURE REINFORCEMENT SHALL BE PROVIDED IN THE TOPS OF ALL CONCRETE SLABS. THE MAXIMUM SPACING OF THIS REINFORCEMENT SHALL NOT EXCEED 18 INCHES.



STORM DRAINAGE PIPE MANHOLE DETAIL
NOT TO SCALE

NOTES:

1. REINFORCEMENT SHALL HAVE A MINIMUM CLEAR COVER OF 2" EXCEPT FOR BENEATH BOTTOM REINFORCEMENT IN TOP SLABS, WHERE THE MINIMUM MAY BE 1".
2. SHRINKAGE AND TEMPERATURE REINFORCEMENT SHALL BE PROVIDED IN THE TOPS OF ALL CONCRETE SLABS. THE MAXIMUM SPACING OF THIS REINFORCEMENT SHALL NOT EXCEED 18 INCHES.

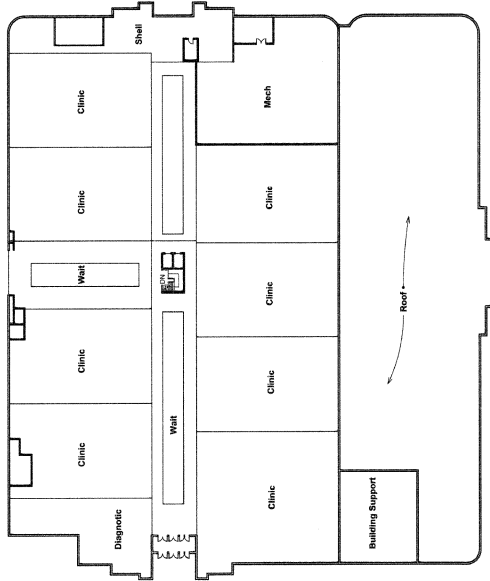


STORM DRAINAGE PIPE MANHOLE DETAIL
NOT TO SCALE

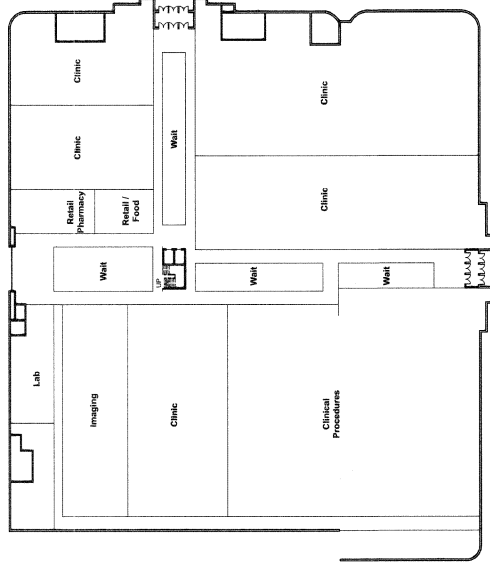
NOTES:

1. REINFORCEMENT SHALL HAVE A MINIMUM CLEAR COVER OF 2" EXCEPT FOR BENEATH BOTTOM REINFORCEMENT IN TOP SLABS, WHERE THE MINIMUM MAY BE 1".
2. SHRINKAGE AND TEMPERATURE REINFORCEMENT SHALL BE PROVIDED IN THE TOPS OF ALL CONCRETE SLABS. THE MAXIMUM SPACING OF THIS REINFORCEMENT SHALL NOT EXCEED 18 INCHES.

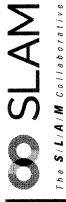
1 2 3 4 5



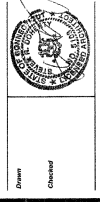
2 UPPER LEVEL
1/2" = 4'-0"



1 LOWER LEVEL
1/2" = 4'-0"



80 Glastonbury Boulevard
Glastonbury, CT 06033-4410
Phone: 860 657 8077
www.slamcoll.com



**MERIDEN
RETAIL
HEALTH**

460 Lewis Avenue
Meriden, CT 06451



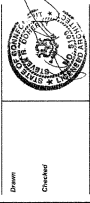
Revision	Date	Revised For
----------	------	-------------

**PROGRESS
NOT FOR CONSTRUCTION**

FLOOR PLANS

02/12/2021
20028.10
A101

1 2 3 4 5



**MERIDEN
RETAIL
HEALTH**

460 Lewis Avenue
Meriden, CT 06451

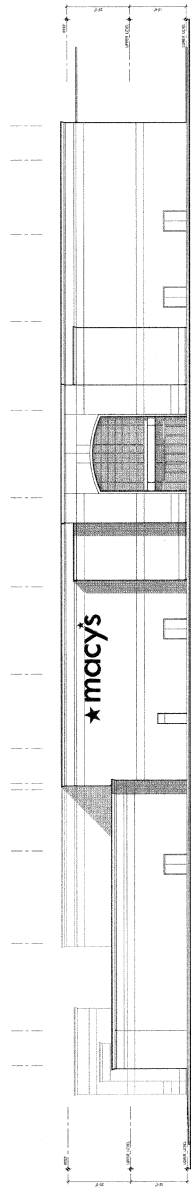
Number	Date	Revised For

**PROGRESS
NOT FOR CONSTRUCTION**

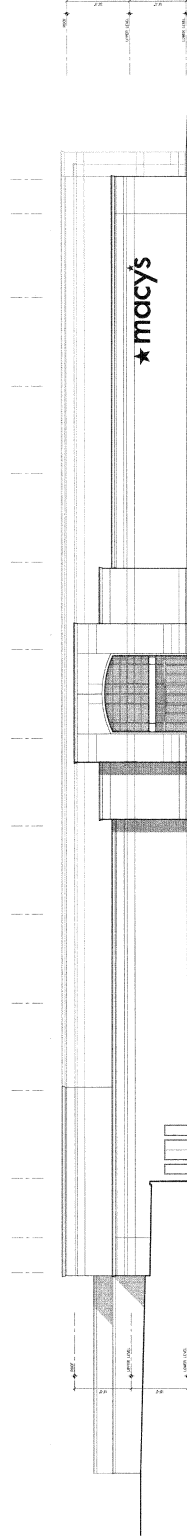
REVISED	BY	DATE

**ELEVATIONS
EXISTING**

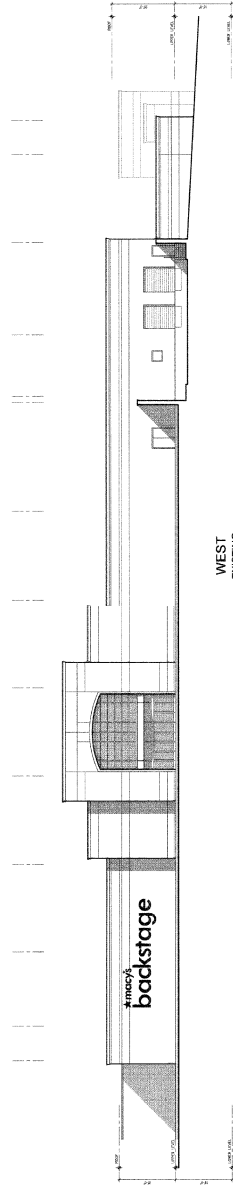
Issue: **02/19/2021**
Scale: **1/8"=1'-0"**
Drawing Number: **A300**
20028.10



**EAST
EXISTING**



**SOUTH
EXISTING**



**WEST
EXISTING**

A

B

C

D

E



Drawn: Chirba

**MERIDEN
RETAIL
HEALTH**

460 Lewis Avenue
Meriden, CT 06451

Number	Date	Revised For

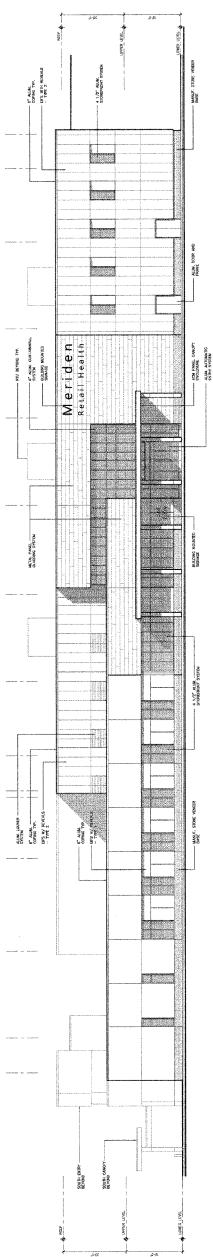
**PROGRESS
NOT FOR CONSTRUCTION**

DESIGNER	SLAMMER
----------	---------

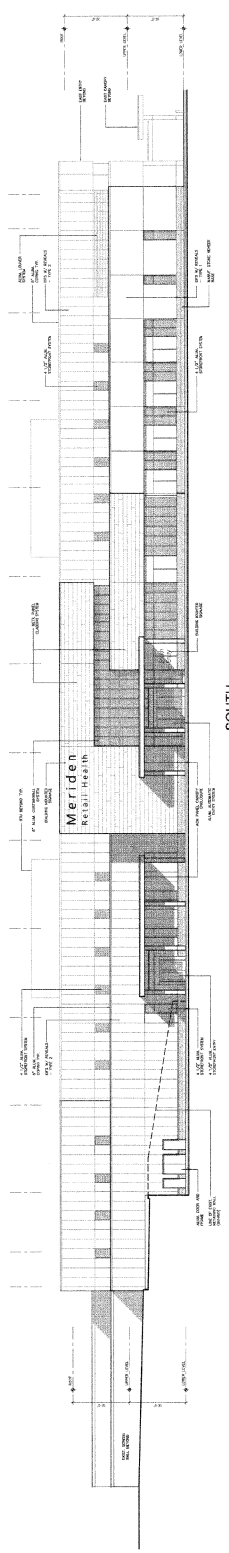
**ELEVATIONS
PROPOSED**

Sheet Number
A301
Date: 02/12/2021
Scale: 1/16"=1'-0"
Project Number: 20028.10

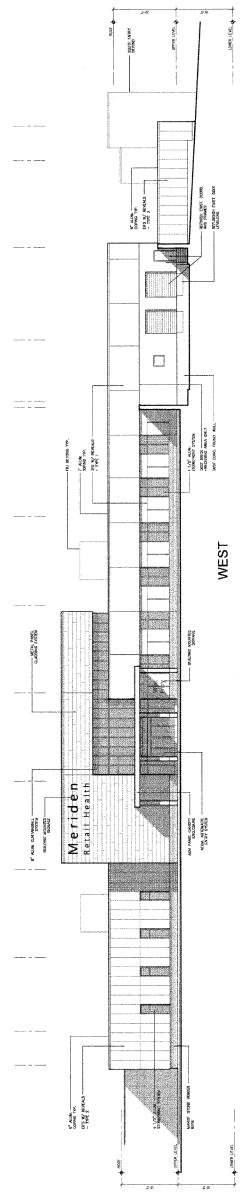
1 2 3 4 5



EAST



SOUTH



WEST

A

B

C

D

E