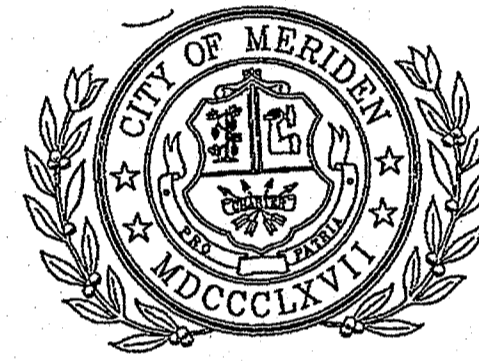
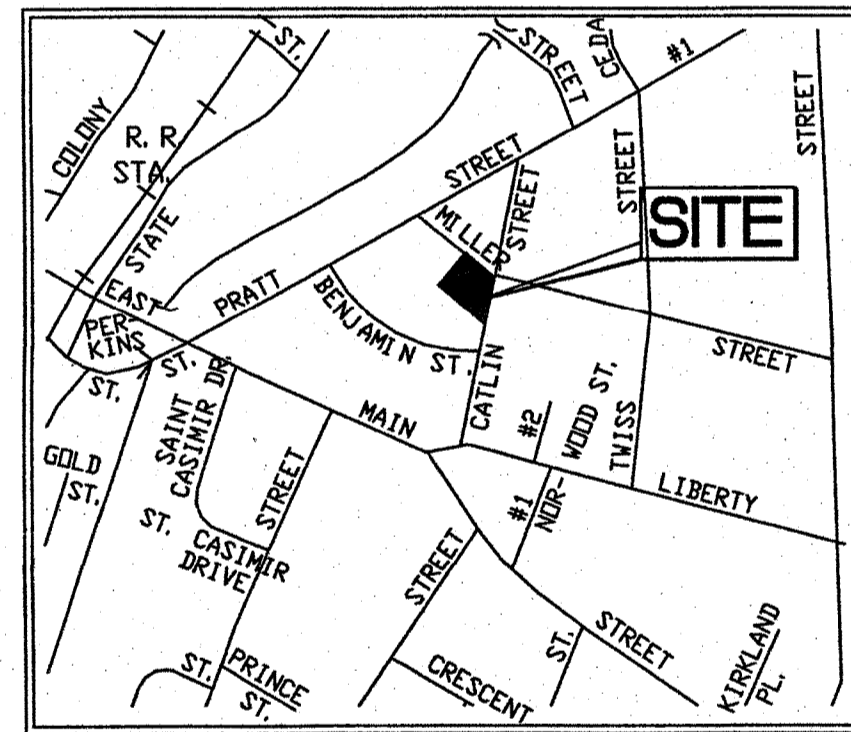


# MILLER STREET PARKING LOT

## CITY OF MERIDEN ENGINEERING DIVISION



NOV. 2019

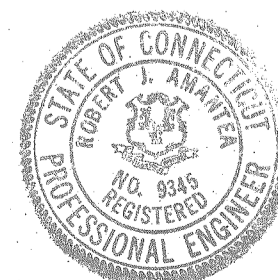


LOCATION MAP

MAYOR	HON. KEVIN SCARPATI
CITY MANAGER	TIMOTHY COON
PUBLIC WORKS DIRECTOR	HOWARD WEISSBERG, P.E.

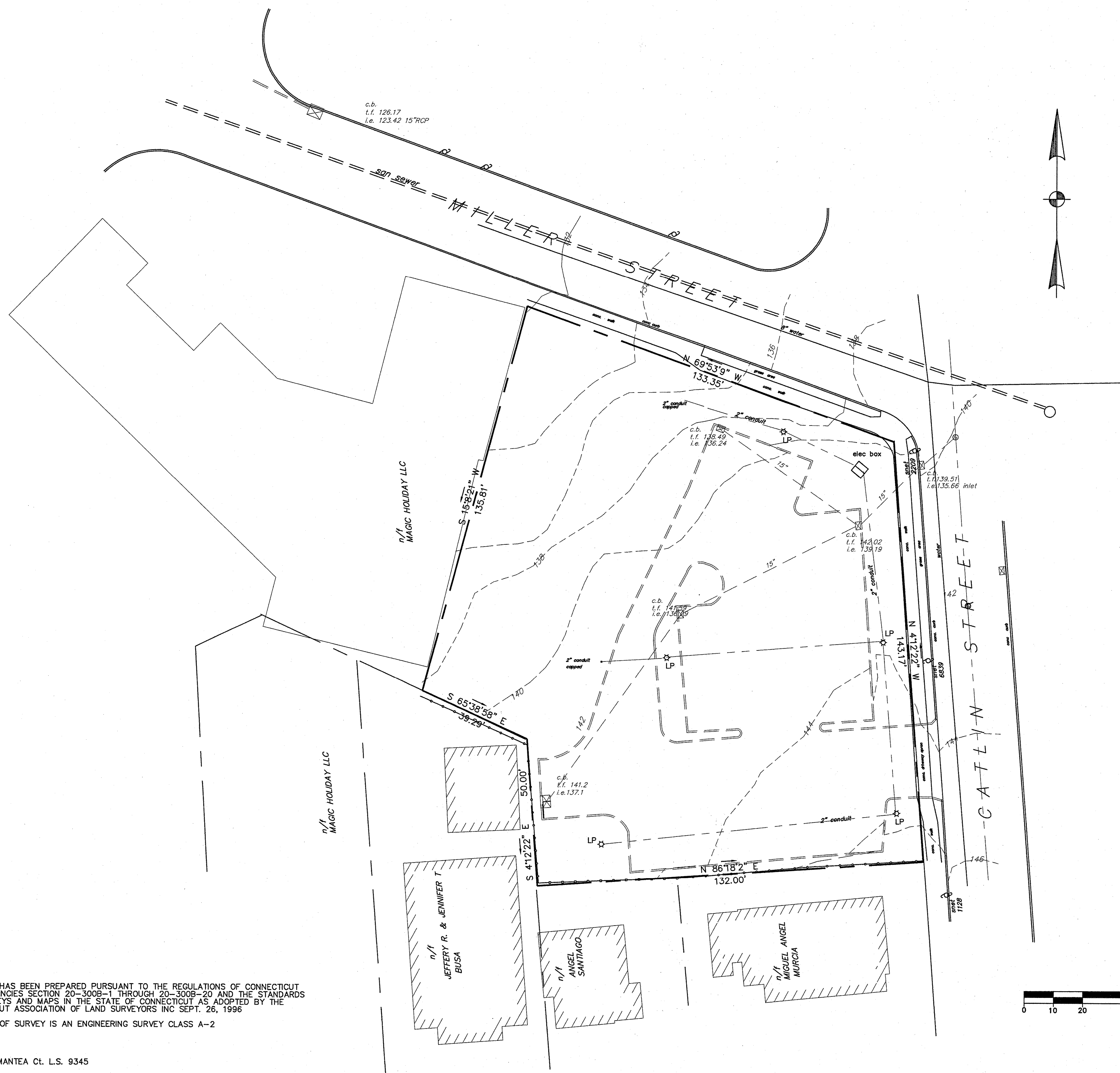
### SHEET INDEX

1. EXISTING CONDITIONS
2. SITE PLAN
3. PROPOSED LAYOUT PLAN
4. LANDSCAPING PLAN
5. DETAIL SHEET



**DESIGN DEVELOPMENT GROUP**  
CONSULTING ENGINEERS – LAND SURVEYORS  
458 EAST MAIN STREET  
MERIDEN, CONNECTICUT  
(203) 235-9809

NOV 21 2019



LEGEND

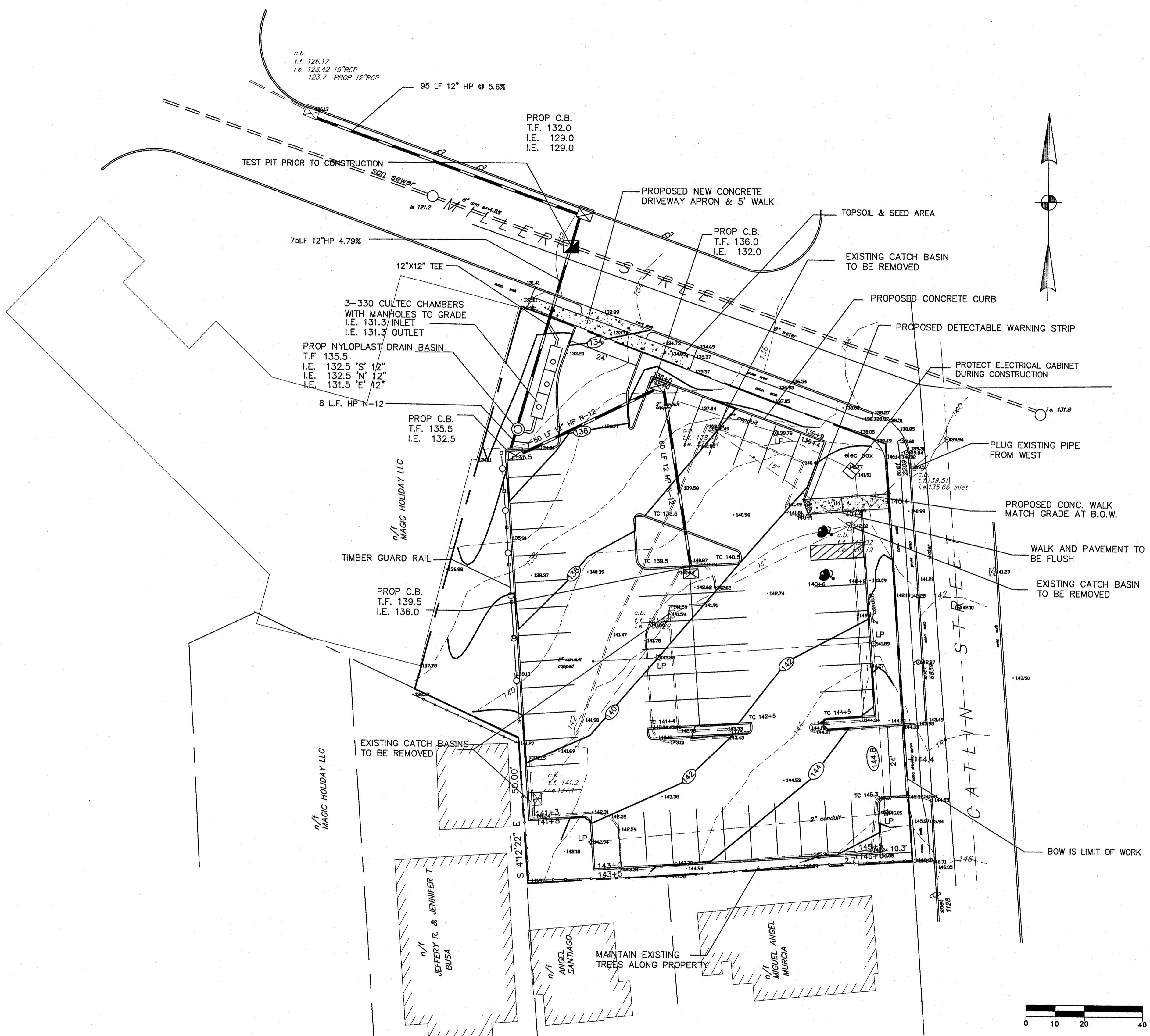
EXISTING	PROPOSED
ELEVATION 145.4	140+2
LIGHT POLE LP	LP
CATCH BASIN CB	CB
UTILITY POLE UP	UP
ELEC PANEL elec	elec
STORM DRAIN 18"	18"
CONTOUR 140	140
CURB	140+5 bot. curb 141+0 top curb

THIS MAP HAS BEEN PREPARED PURSUANT TO THE REGULATIONS OF CONNECTICUT STATE AGENCIES SECTION 20-300B-1 THROUGH 20-300B-20 AND THE STANDARDS FOR SURVEYS AND MAPS IN THE STATE OF CONNECTICUT AS ADOPTED BY THE CONNECTICUT ASSOCIATION OF LAND SURVEYORS INC SEPT. 26, 1996  
 THE TYPE OF SURVEY IS AN ENGINEERING SURVEY CLASS A-2

ROBERT AMANTEA Ct. L.S. 9345  
 THIS MAP IS NOT VALID UNLESS ORIGINAL SIGNATURE AND SEAL ARE AFFIXED

SEE SHEET 2 FOR GENERAL NOTES

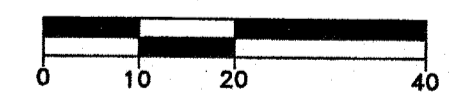
NO.		DESCRIPTION		DATE	APP'D	SURVEYED BY: BK			<b>DESIGN DEVELOPMENT GROUP LLC</b> CIVIL ENGINEERS / LAND SURVEYORS 458 EAST MAIN STREET MERIDEN, CONNECTICUT 06450	<b>CITY OF MERIDEN</b> MERIDEN, CONNECTICUT	DRAWING TITLE: <b>EXISTING CONDITIONS</b>		REVISIONS:	
IT IS A VIOLATION OF THE PROFESSIONAL LICENSE LAW FOR ANY PERSON TO ALTER THIS DRAWING IN ANY WAY, UNLESS ACTING UNDER THE DIRECTION OF A LICENSED PROFESSIONAL ENGINEER/SURVEYOR AS APPLICABLE. THE ALTERING ENGINEER/SURVEYOR SHALL AFFIX HIS/HER SEAL AND NOTATION "ALTERED BY" FOLLOWED BY HIS/HER SIGNATURE AND DATE OF ALTERATION						DRAWN BY: KE					DRAWING NO.		NOV. 2019	
						DESIGNED BY: RA					SCALE: 1"=20'		DATE:	
						CHECKED BY:					CONTRACT NO.		SHEET 1 OF	



**LEGEND**

	EXISTING	PROPOSED
ELEVATION	145.4	140+2
LIGHT POLE	LP	LP
CATCH BASIN	CB	CB
UTILITY POLE	UP	UP
ELEC PANEL	elec	elec
STORM DRAIN	15"	15"
CONTOUR	140	140
CURB		140+5 bot. curb 141+0 top curb

- GENERAL NOTES**
- ELEVATIONS BASED ON NAVD29 DATUM
  - UTILITIES SHOWN ARE FROM FIELD INFORMATION AND FROM EXISTING MAPS AND ARE SUBJECT TO FIELD VERIFICATION PRIOR TO CONSTRUCTION. CAUTION THE CONTRACTOR SHALL VERIFY THE LOCATION, SERVICEABILITY AND SIZE OF THE EXISTING UTILITY PRIOR TO CONSTRUCTION.
  - THE CONTRACTOR SHOULD BE AWARE THAT OTHER UTILITIES MAY EXIST. IT IS THE RESPONSIBILITY OF THE CONTRACTOR TO HAVE ALL THE UTILITIES MARKED BY THE UTILITY OWNER PRIOR TO CONSTRUCTION
- CALL BEFORE YOU DIG 811**
- ALL CONSTRUCTION SHALL BE IN ACCORDANCE WITH THE CITY OF MERIDEN STANDARDS AND SPECIFICATIONS AND THE D.I.T. FORM 817
  - THE CONTRACTOR SHALL BE RESPONSIBLE FOR THE INSTALLATION AND MAINTENANCE OF ALL EROSION AND SEDIMENT CONTROL MEASURES PRIOR TO AND DURING THE CONSTRUCTION. THE LATEST SEDIMENT & EROSION CONTROL MANUAL, PUBLISHED BY THE STATE OF CONNECTICUT DEPARTMENT OF ENVIRONMENTAL PROTECTION SHALL BE COMPLIED WITH. CONTRACTOR SHALL BE RESPONSIBLE FOR CLEANING THE STREET OF ANY DEBRIS AS A RESULT OF THIS CONSTRUCTION PROJECT
  - ALL EXISTING CURBING, SIDEWALKS AND PAVEMENT SHALL BE REPAIRED AT NO COST TO THE CITY SHOULD THE CONTRACTOR DAMAGE THESE DURING THE CONSTRUCTION OF THE HOME.
  - ENGINEERING PERMITS CANNOT BE ISSUED UNLESS THE CONTRACTOR HAS A VALID CBYD AT THE TIME OF APPLICATION FOR THE PERMIT.
  - CONTRACTOR IS RESPONSIBLE FOR CONDUIT AND REWIRING OF RELOCATED LIGHTING BACK TO THE CONTROL PANEL. RELOCATED LIGHT POLES SHALL BE INSTALLED ON NEW FOUNDATIONS
9. TOTAL SPACES 51



NO.	DESCRIPTION	DATE	APP'D
	IT IS A VIOLATION OF THE PROFESSIONAL LICENSE LAW FOR ANY PERSON TO ALTER THIS DRAWING IN ANY WAY, UNLESS ACTING UNDER THE DIRECTION OF A LICENSED PROFESSIONAL ENGINEER/SURVEYOR AS APPLICABLE. THE ALTERING ENGINEER/SURVEYOR SHALL AFFIX HIS/HER SEAL AND NOTATION "ALTERED BY" FOLLOWED BY HIS/HER SIGNATURE AND DATE OF ALTERATION		

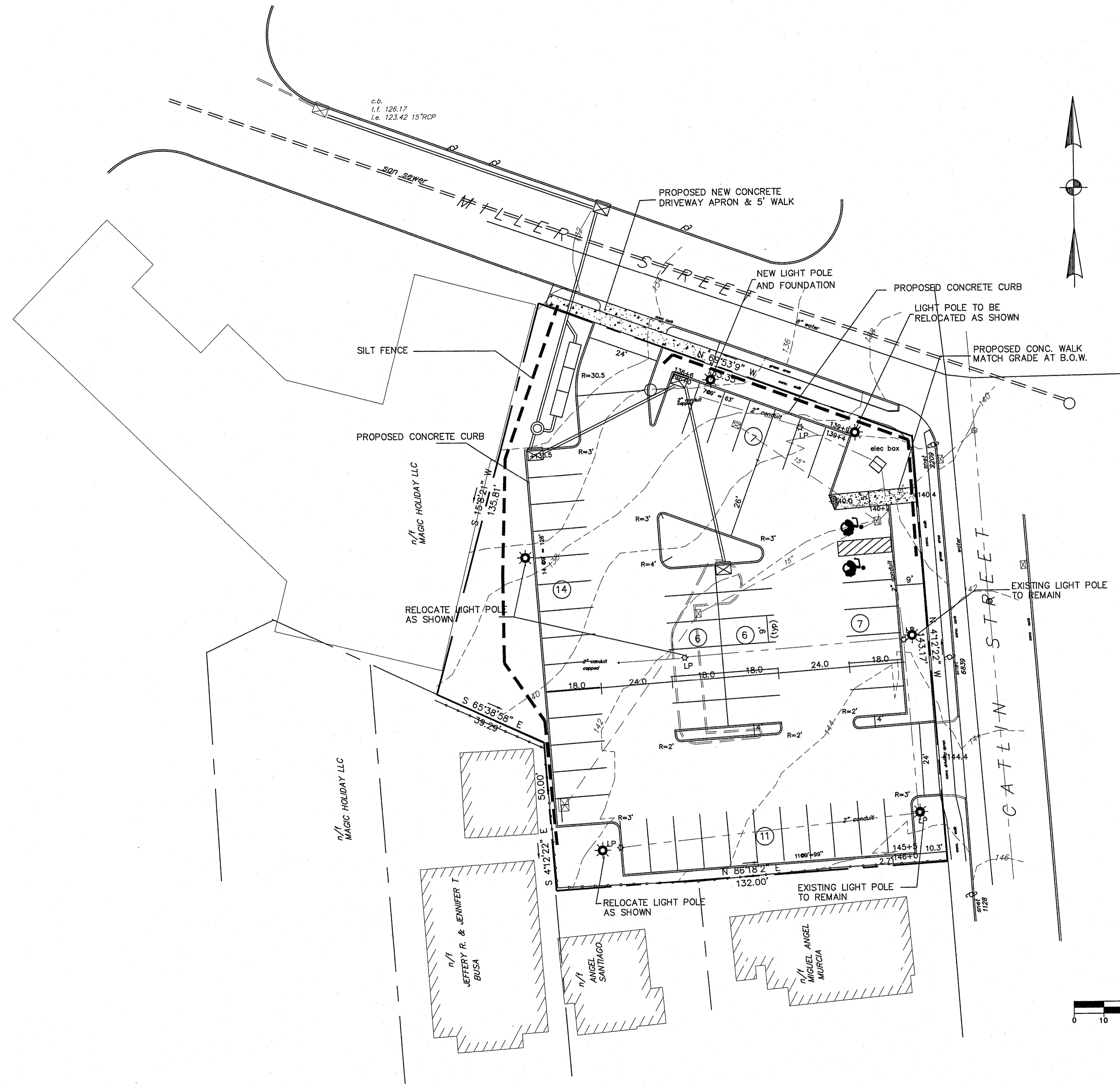
SURVEYED BY:	BK
DRAWN BY:	KE
DESIGNED BY:	RA
CHECKED BY:	
SIGNATURE	SEAL

**DESIGN DEVELOPMENT GROUP LLC**  
 CIVIL ENGINEERS / LAND SURVEYORS  
 458 EAST MAIN STREET  
 MERIDEN, CONNECTICUT 06450

**CITY OF MERIDEN**  
 MERIDEN, CONNECTICUT

DRAWING TITLE:	<b>SITE PLAN</b>
	MILLER AND CATLIN STREET PARKING LOT
CONTRACT NO.	

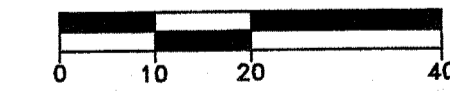
REVISIONS:	
DRAWING NO.	
SCALE:	1"=20'
DATE:	NOV. 2019
SHEET	2 OF 5



LEGEND

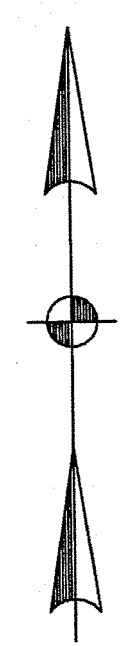
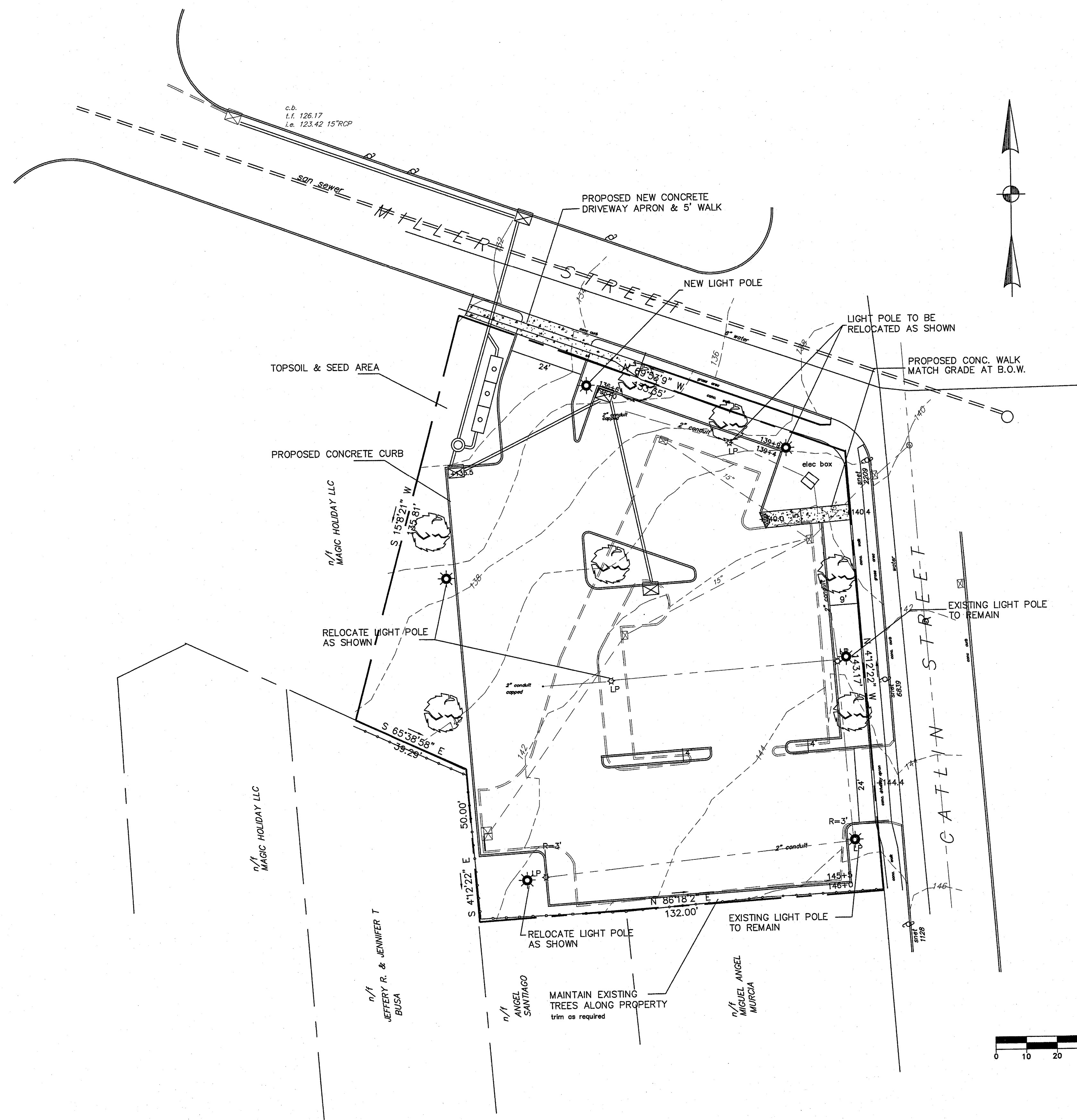
	EXISTING	PROPOSED
ELEVATION	145.4	140+2
LIGHT POLE	⊕ LP	⊕
CATCH BASIN	⊠	⊠
UTILITY POLE	⊙	⊙
ELEC PANEL	⊠ <sup>elec</sup>	⊠ <sup>elec</sup>
STORM DRAIN	15"	15"
CONTOUR	140	140
CURB	==	==

140+2 bot. curb  
 141+0 top curb



SEE SHEET 2 FOR GENERAL NOTES

NO.		DESCRIPTION		DATE	APP'D
IT IS A VIOLATION OF THE PROFESSIONAL LICENSE LAW FOR ANY PERSON TO ALTER THIS DRAWING IN ANY WAY, UNLESS ACTING UNDER THE DIRECTION OF A LICENSED PROFESSIONAL ENGINEER/SURVEYOR AS APPLICABLE. THE ALTERING ENGINEER/SURVEYOR SHALL AFFIX HIS/HER SEAL AND NOTATION "ALTERED BY" FOLLOWED BY HIS/HER SIGNATURE AND DATE OF ALTERATION.					
SURVEYED BY:		BK			
DRAWN BY:		KE			
DESIGNED BY:		RA			
CHECKED BY:					
SIGNATURE		SEAL			
DESIGN DEVELOPMENT GROUP LLC CIVIL ENGINEERS / LAND SURVEYORS 458 EAST MAIN STREET MERIDEN, CONNECTICUT 06450			CITY OF MERIDEN MERIDEN, CONNECTICUT		
DRAWING TITLE: <b>PROPOSED LAYOUT</b>					
MILLER AND CATLIN STREET PARKING LOT					
CONTRACT NO.					
REVISIONS:					
DRAWING NO.					
SCALE: 1"=20'					
DATE: NOV. 2019					
SHEET <b>3</b> OF <b>5</b>					



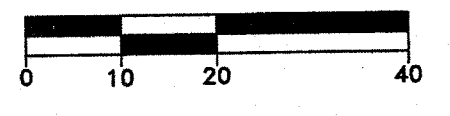
LEGEND

EXISTING	PROPOSED
ELEVATION 145.4	140+2
LIGHT POLE LP	LP
CATCH BASIN	Catch Basin
UTILITY POLE	Utility Pole
ELEC PANEL elec	Elec Panel
STORM DRAIN 12"	Storm Drain
CONTOUR 140	Contour
CURB	140+5 bot. curb 141+0 top curb

PLANTING SCHEDULE

7	HONEY LOCUST <i>Gleditsia triacanthos</i>	8-10' ht.	B&B
---	---	-----------	-----

SEE SHEET 2 FOR GENERAL NOTES



NO.	DESCRIPTION	DATE	APP'D

IT IS A VIOLATION OF THE PROFESSIONAL LICENSE LAW FOR ANY PERSON TO ALTER THIS DRAWING IN ANY WAY, UNLESS ACTING UNDER THE DIRECTION OF A LICENSED PROFESSIONAL ENGINEER/SURVEYOR AS APPLICABLE. THE ALTERING ENGINEER/SURVEYOR SHALL AFFIX HIS/HER SEAL AND NOTATION "ALTERED BY" FOLLOWED BY HIS/HER SIGNATURE AND DATE OF ALTERATION

SURVEYED BY:	BK
DRAWN BY:	KE
DESIGNED BY:	RA
CHECKED BY:	

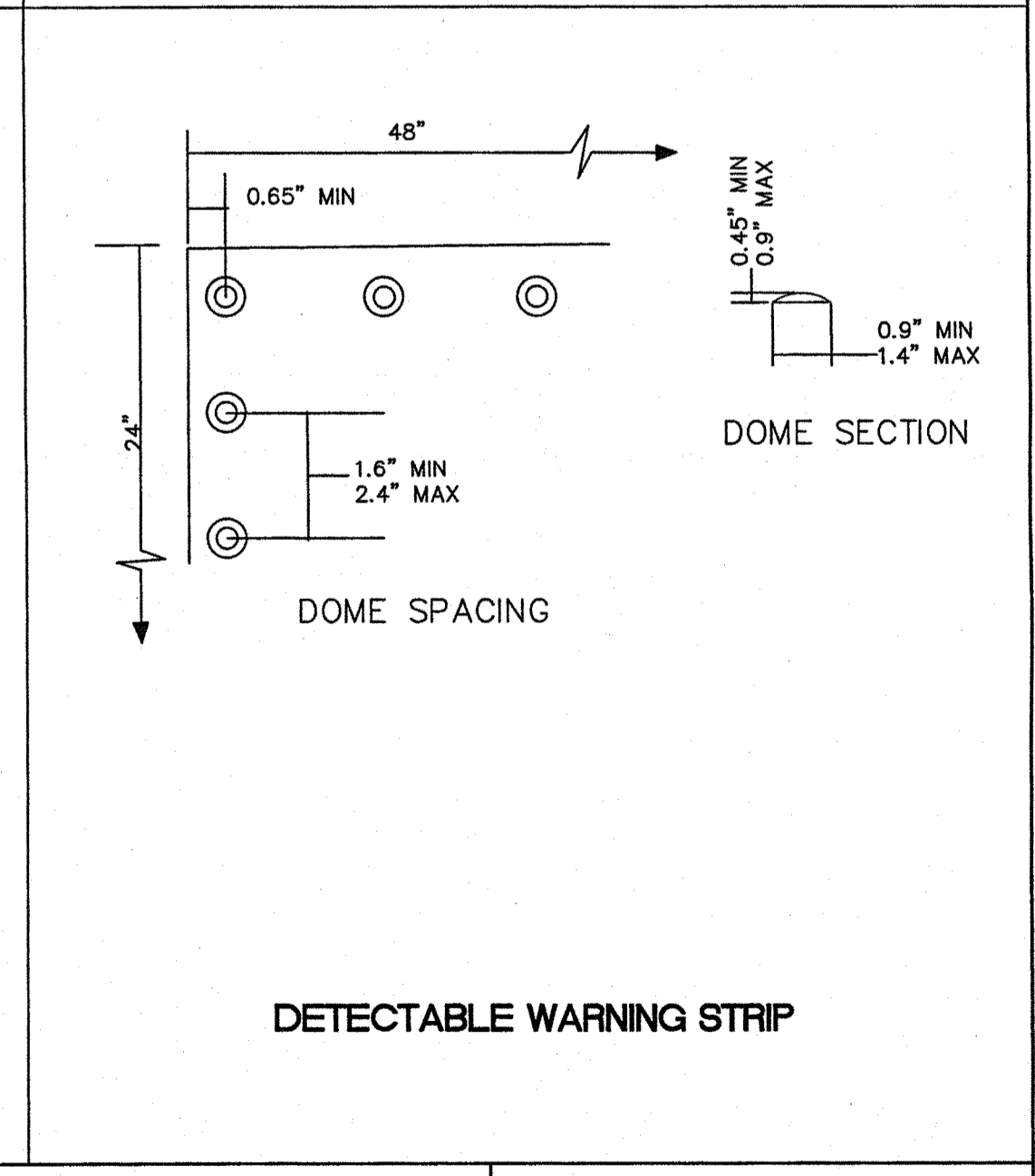
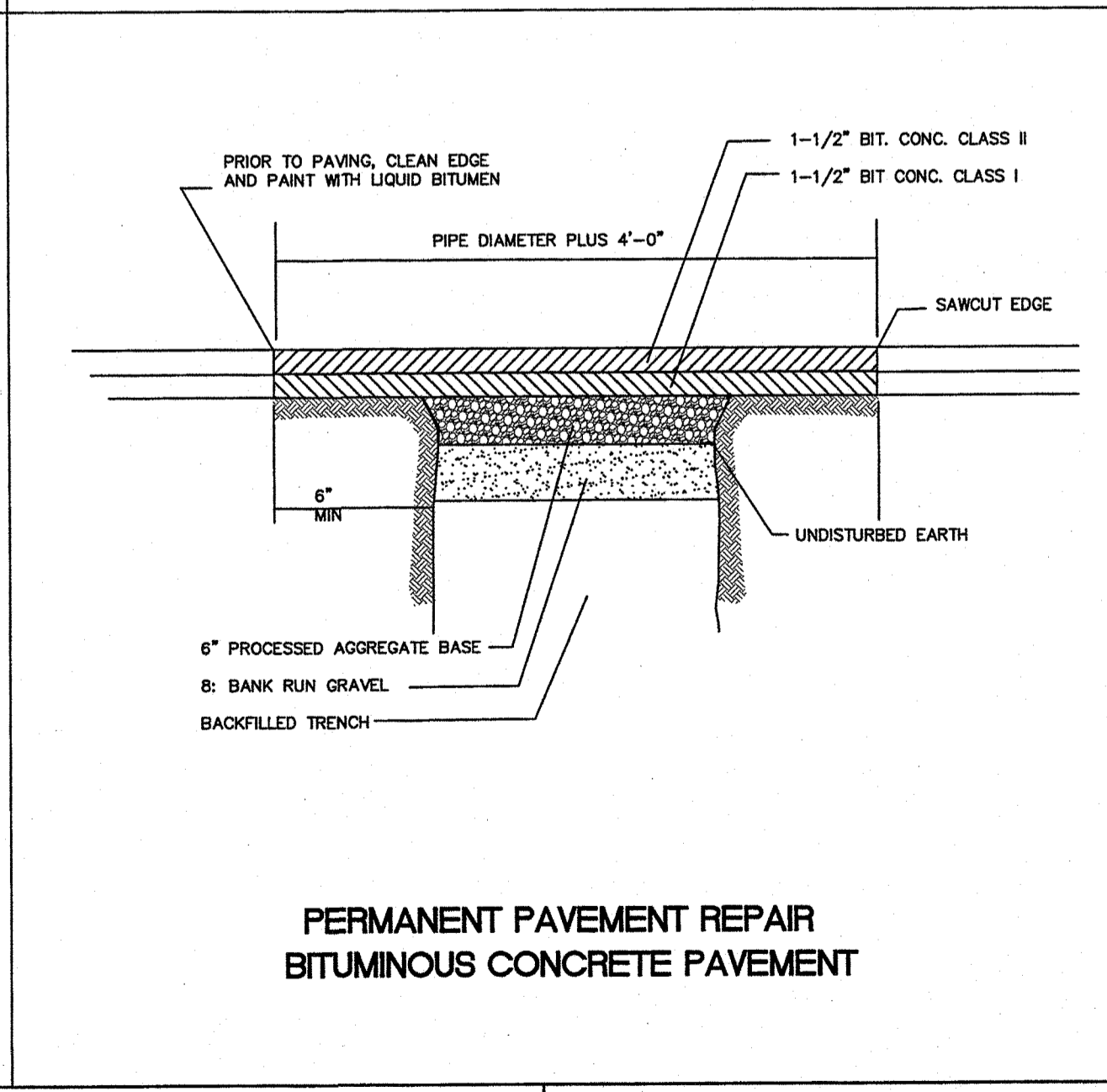
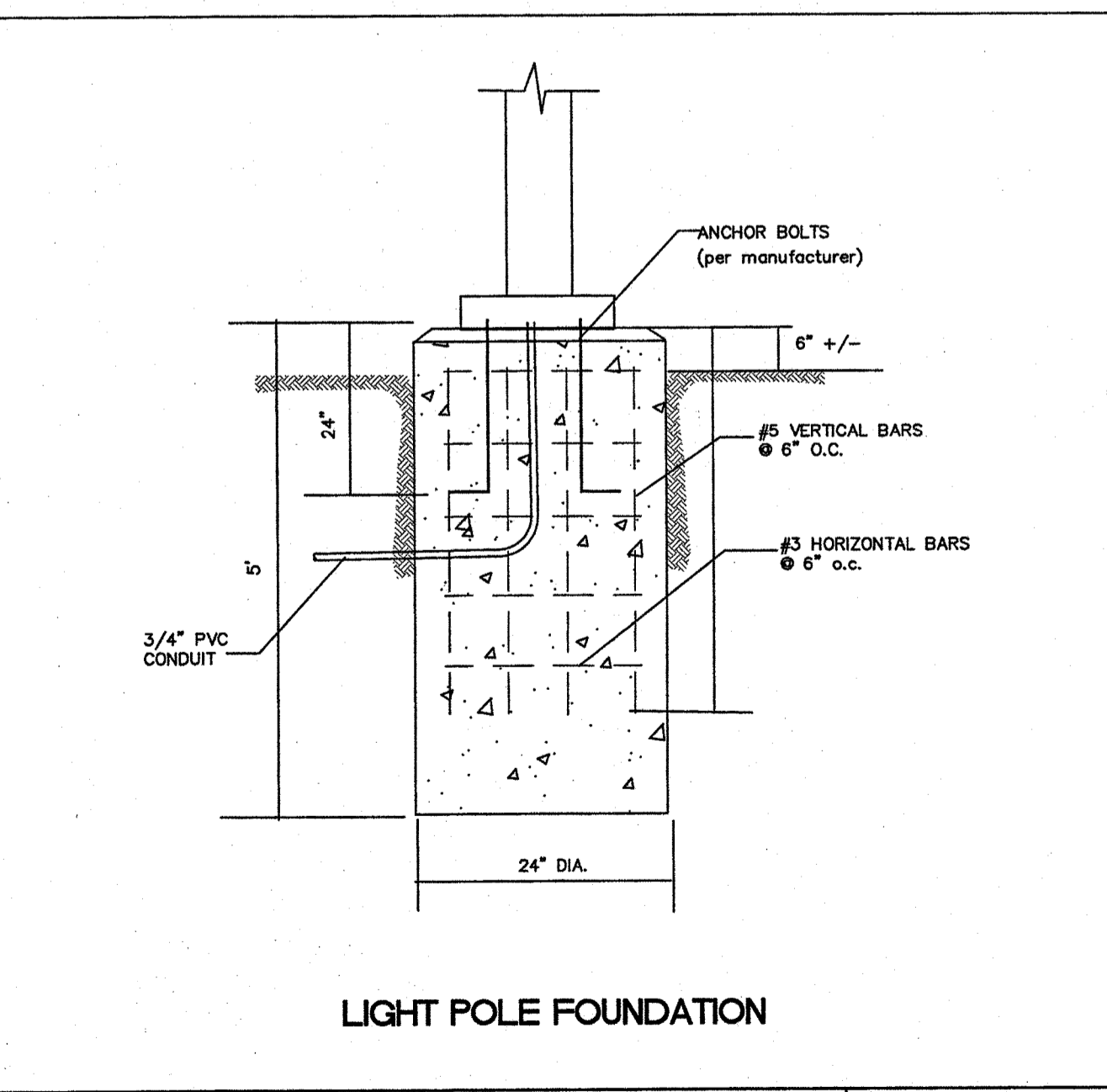
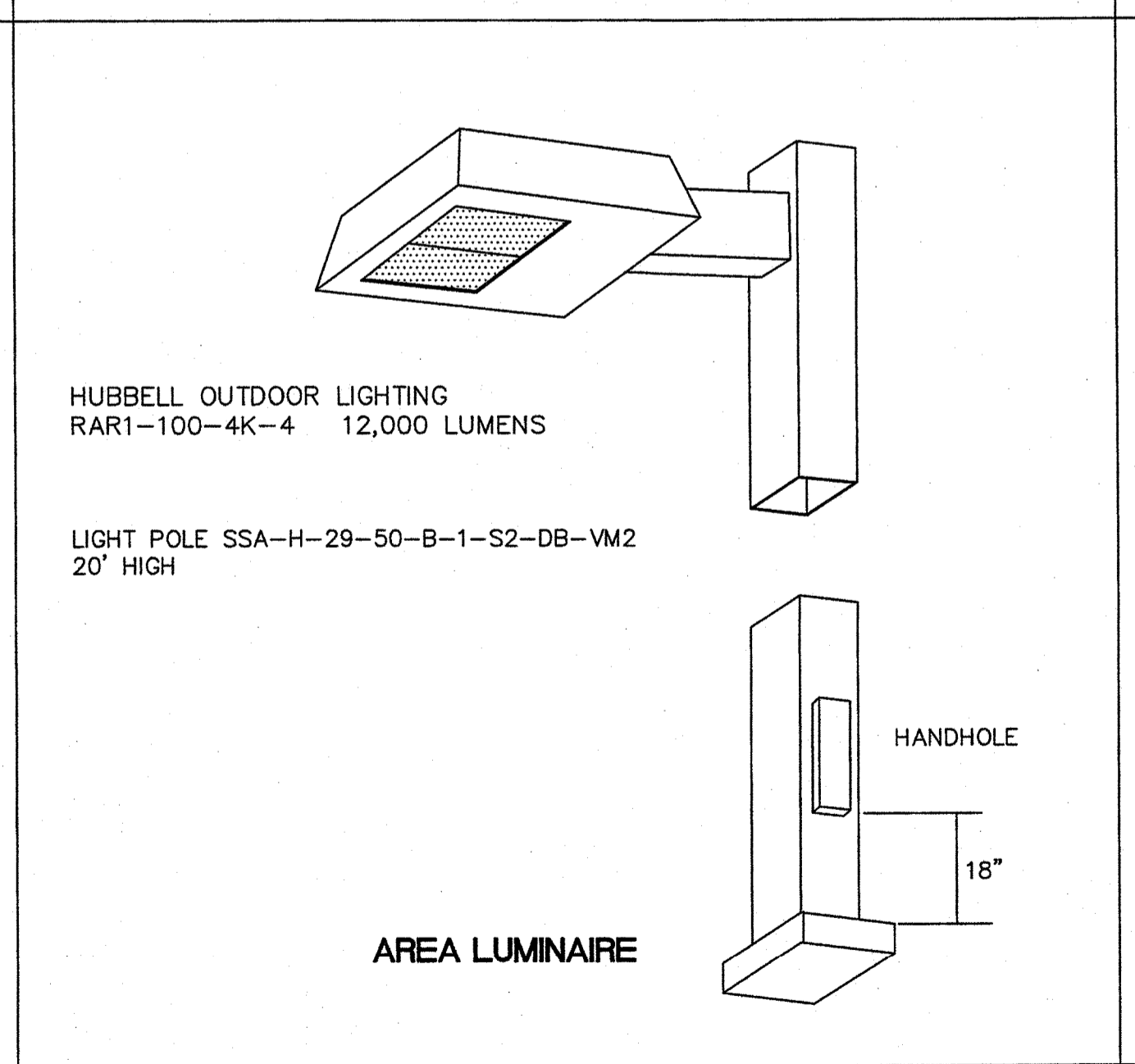
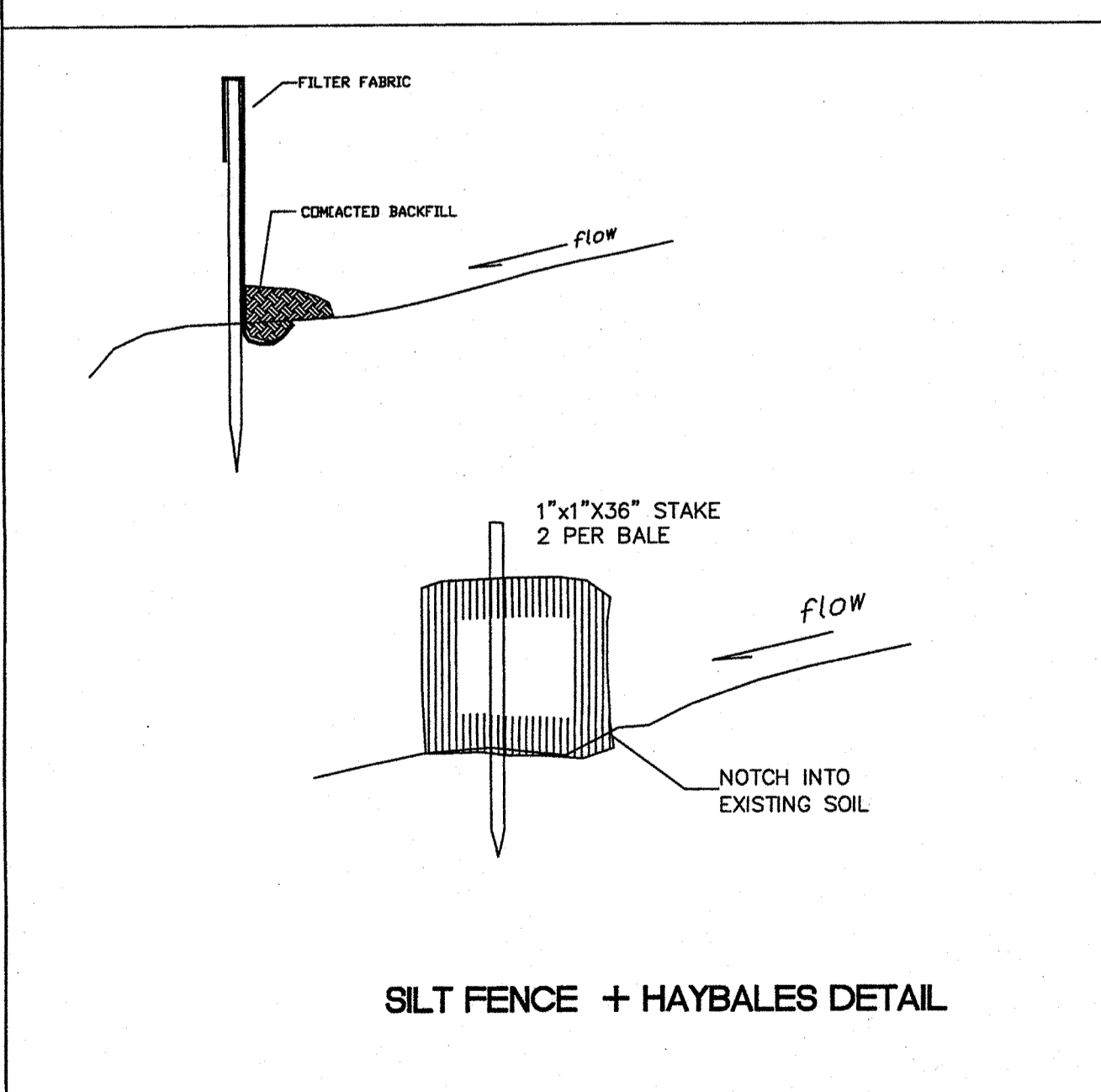
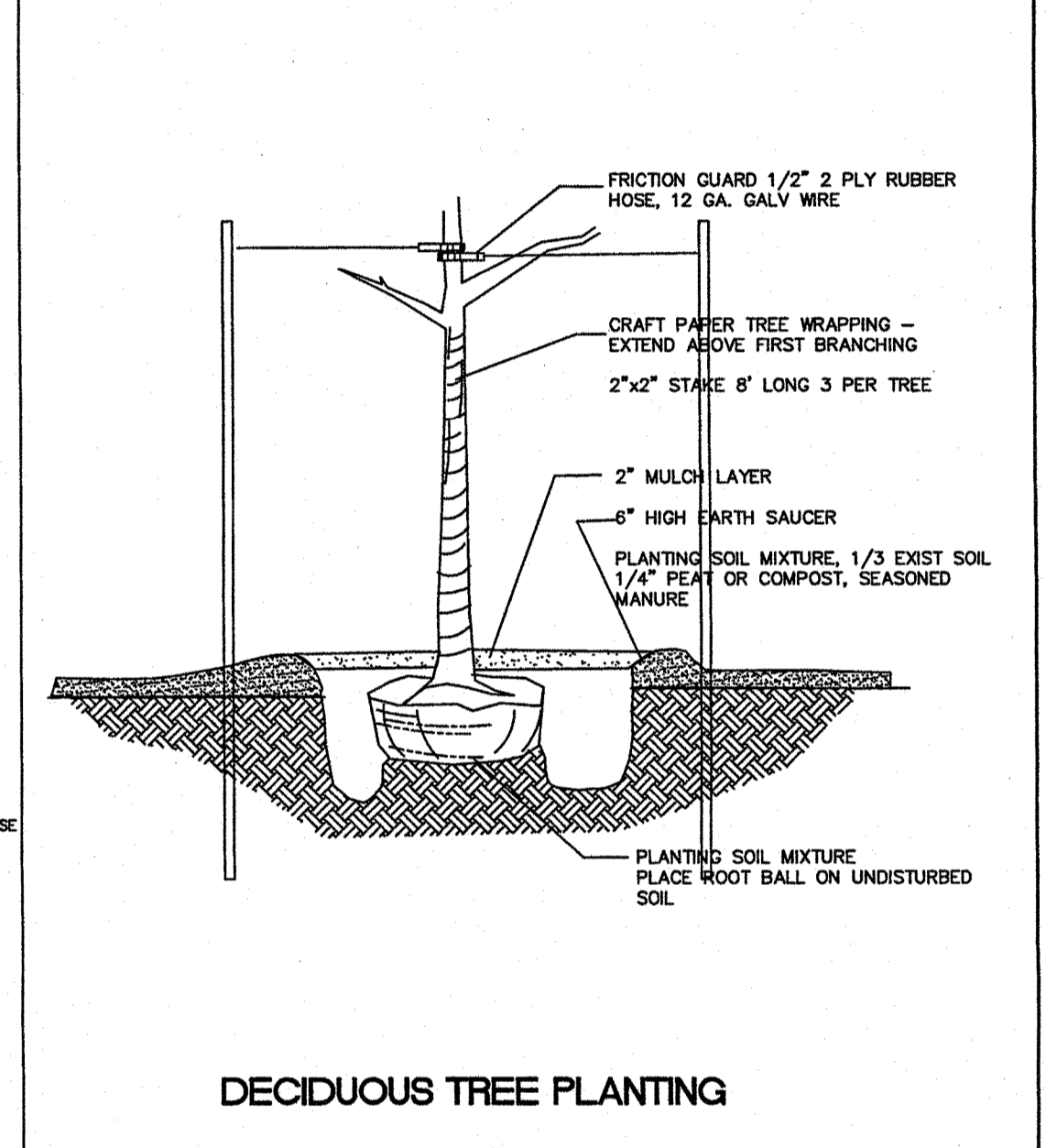
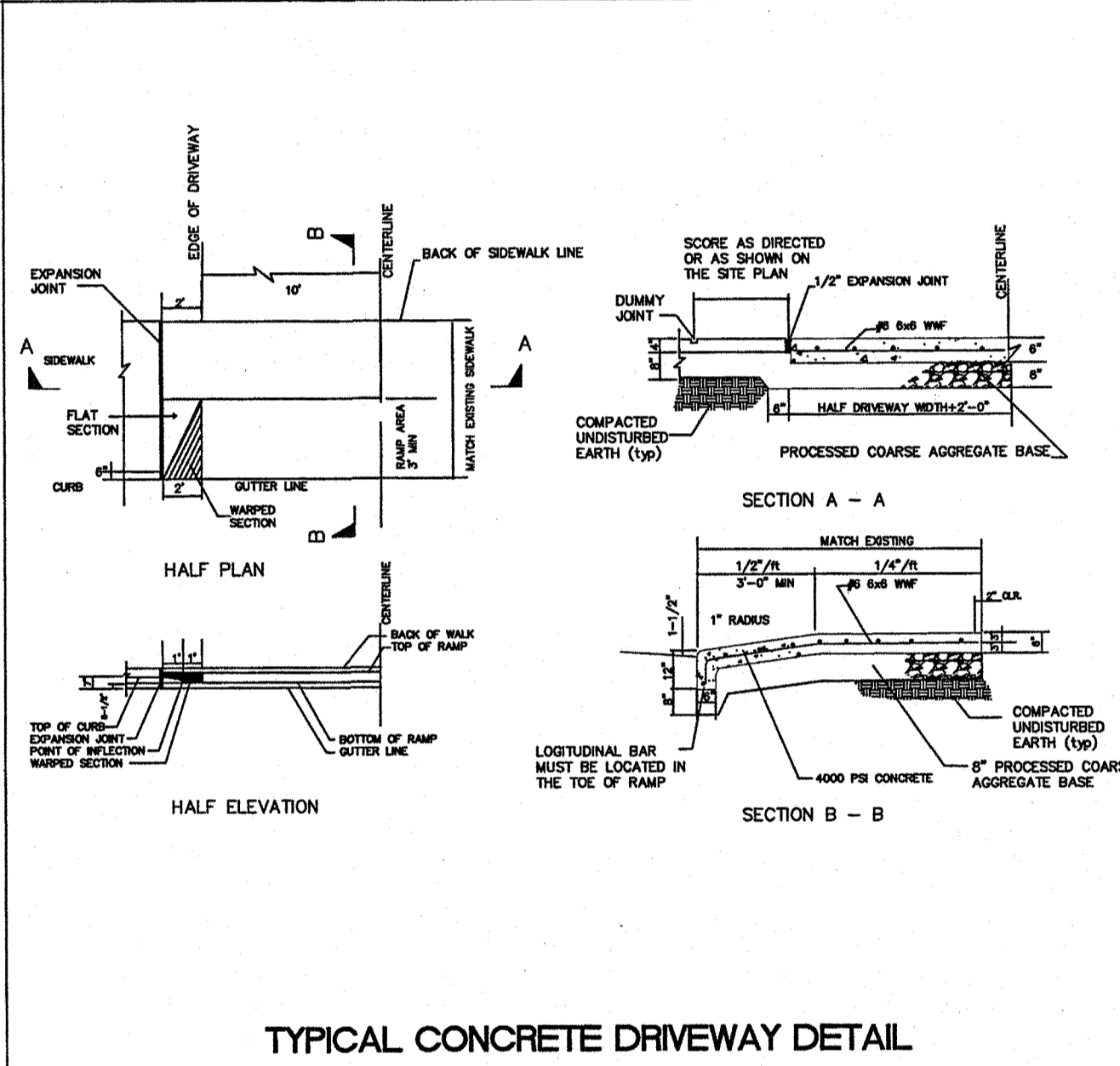
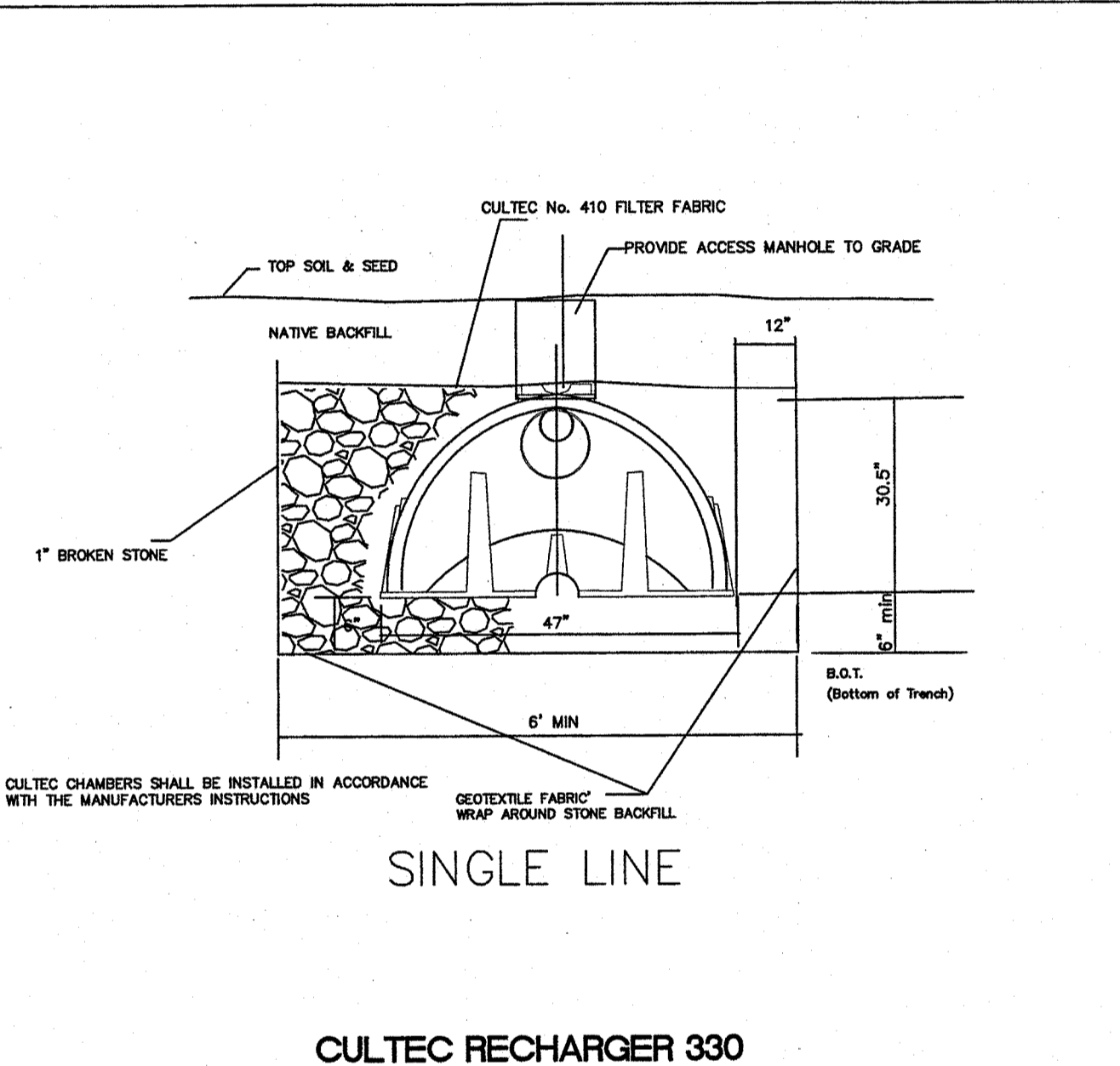
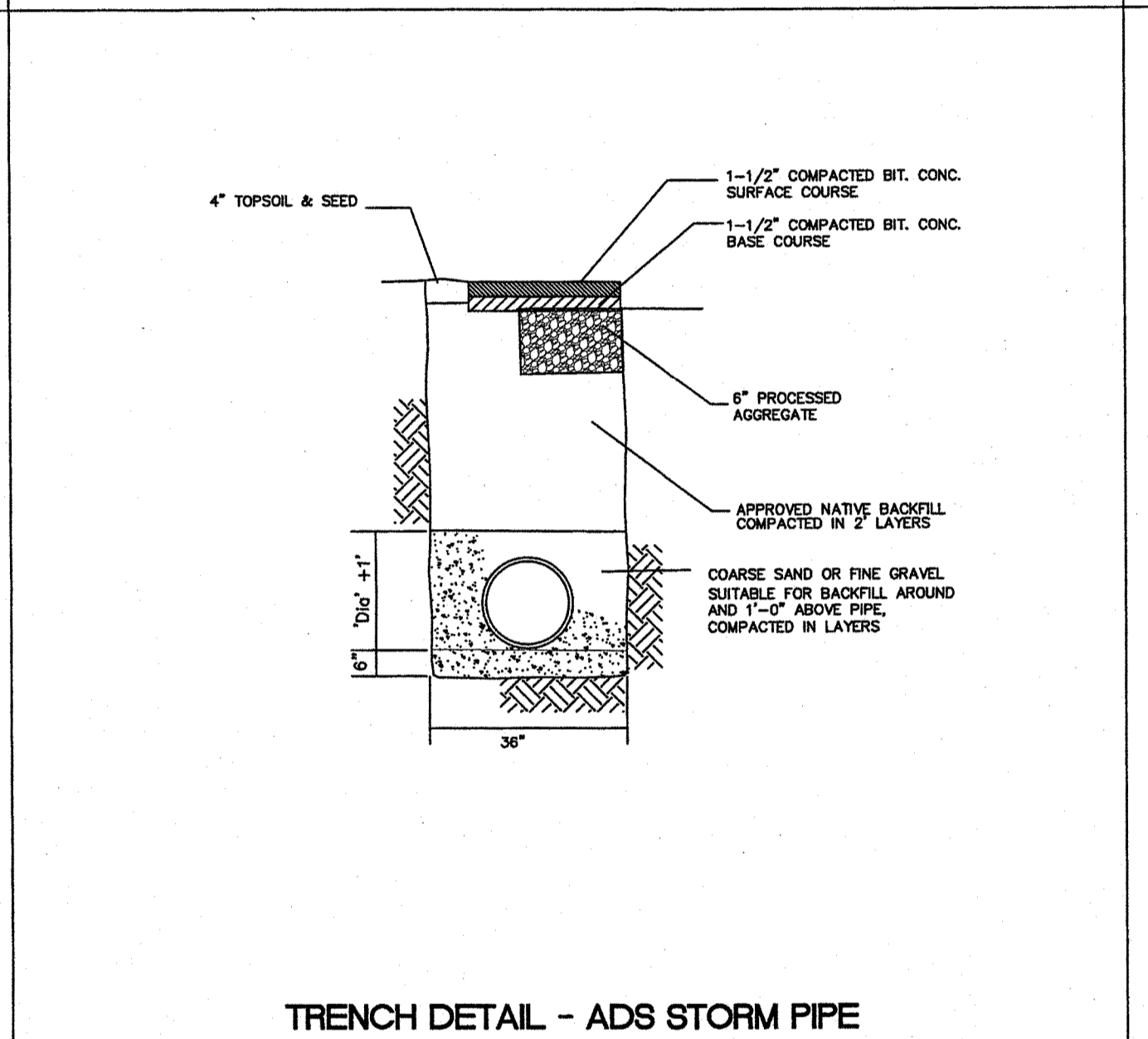
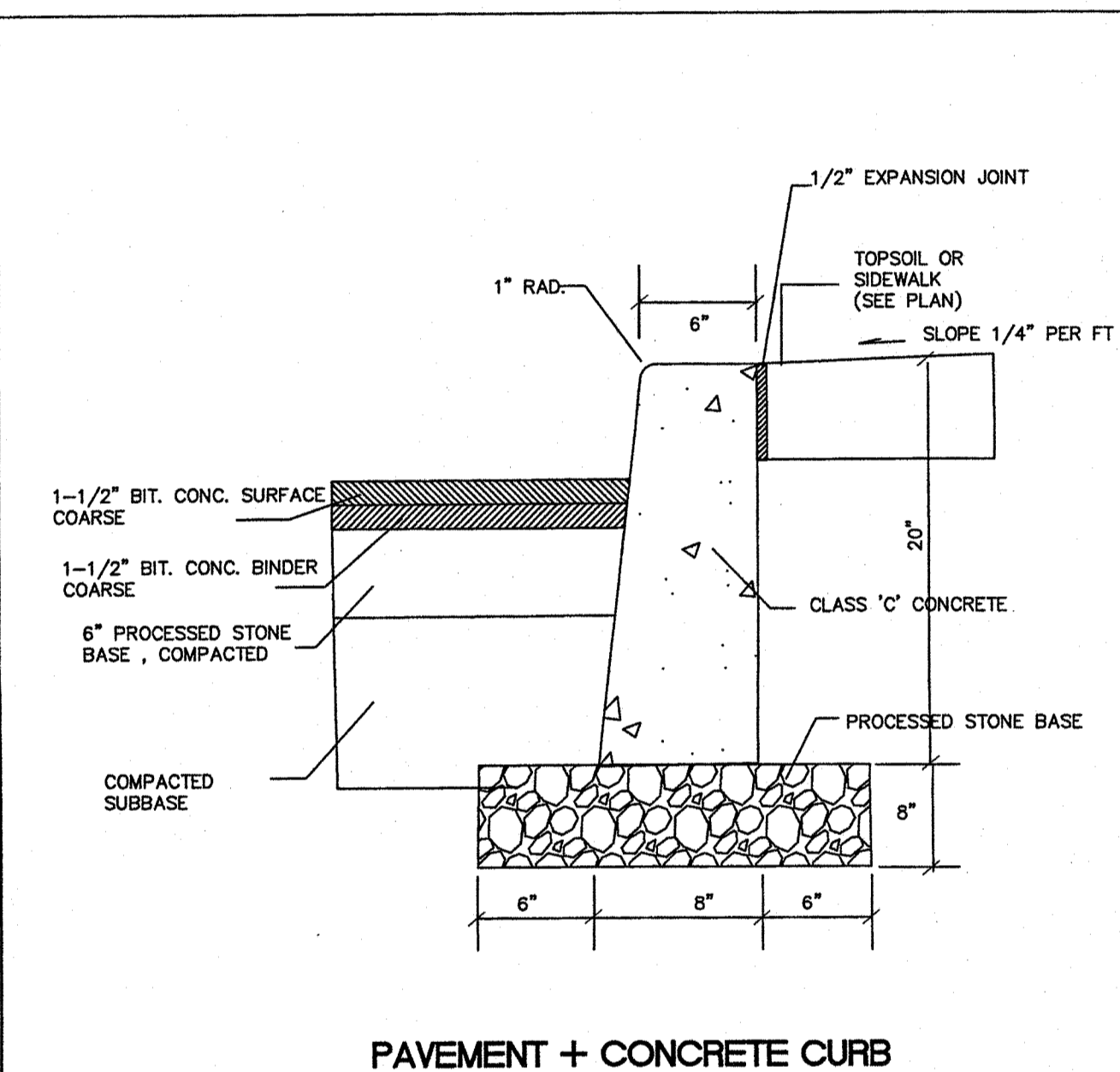
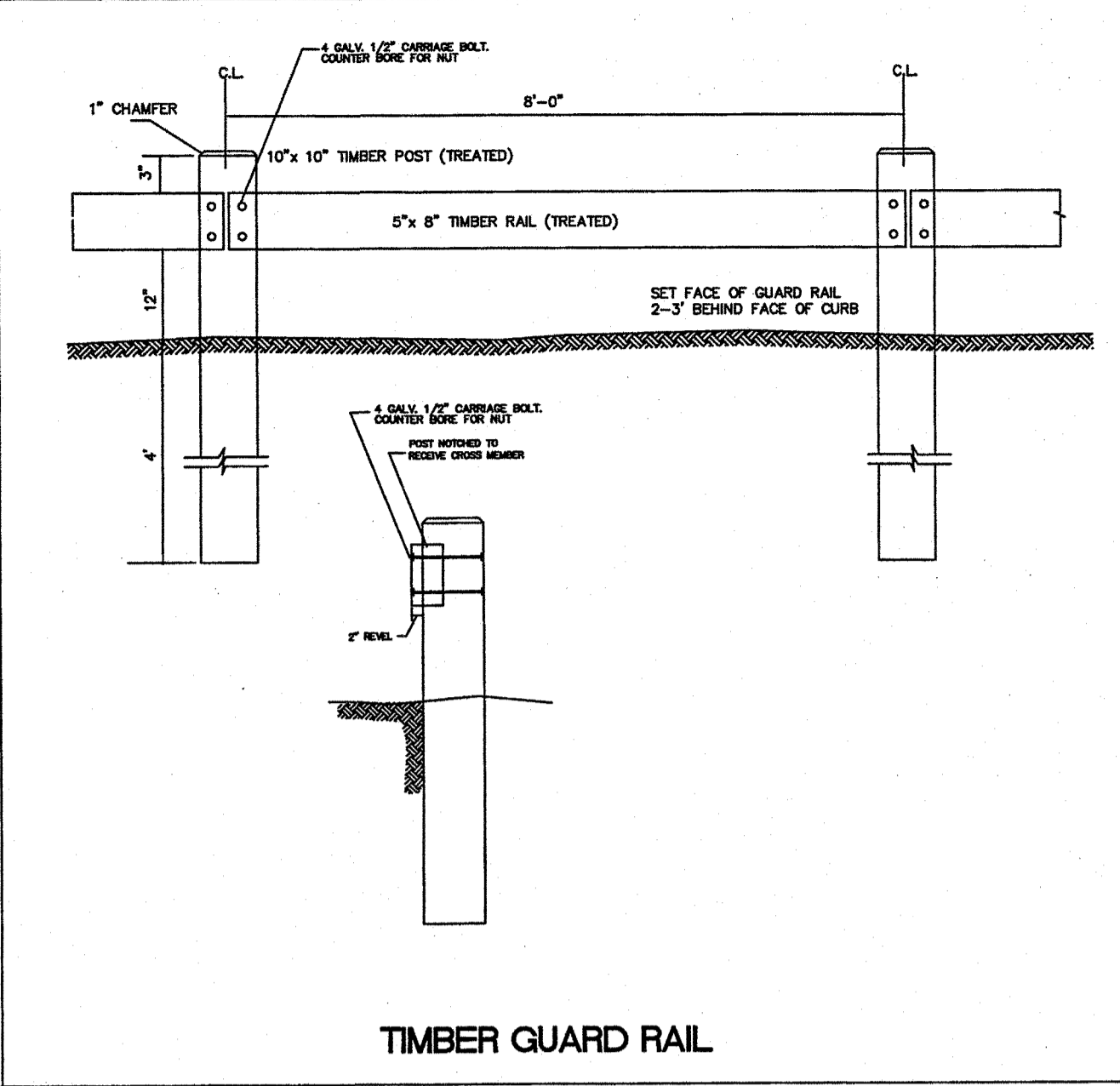
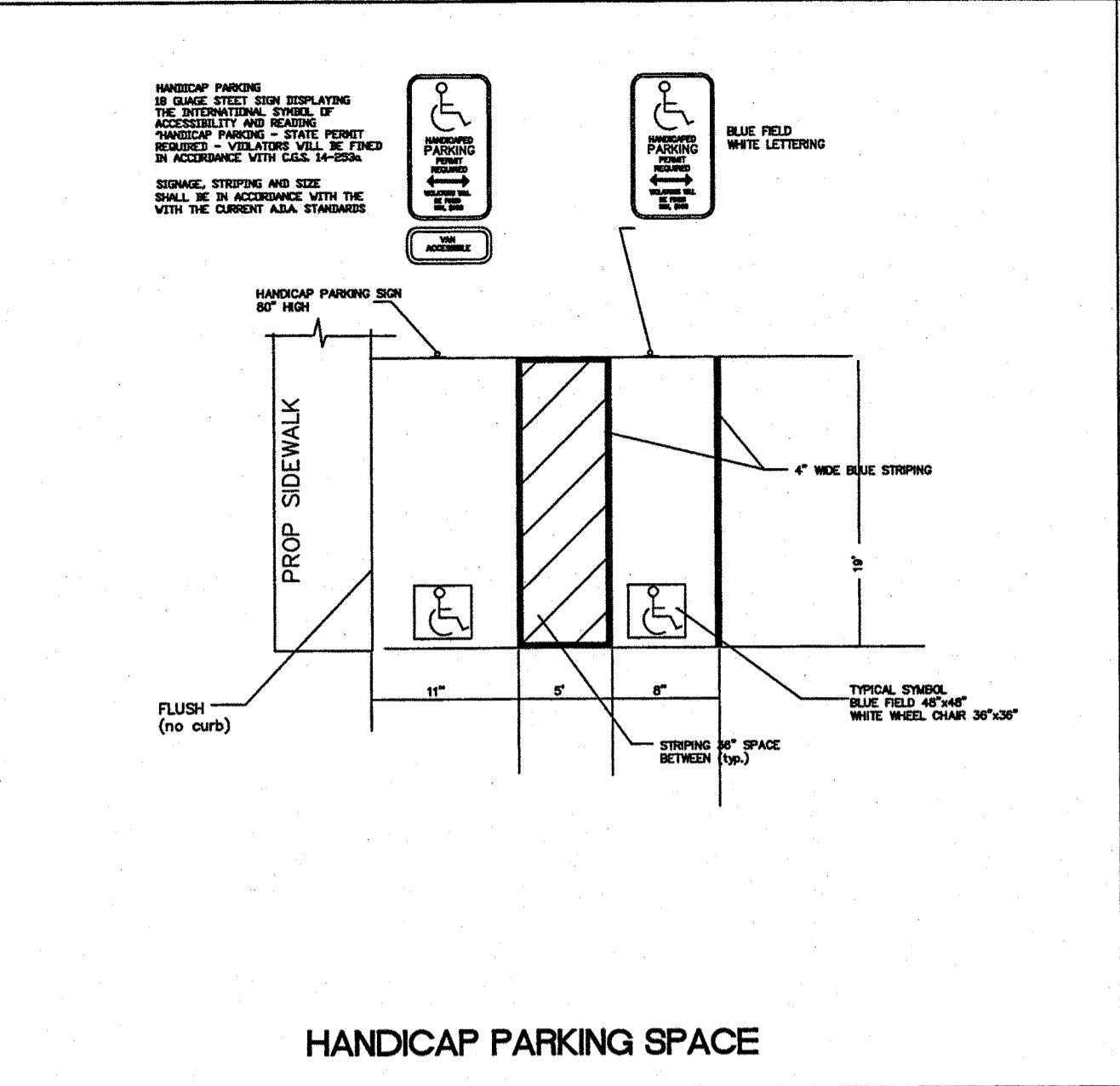
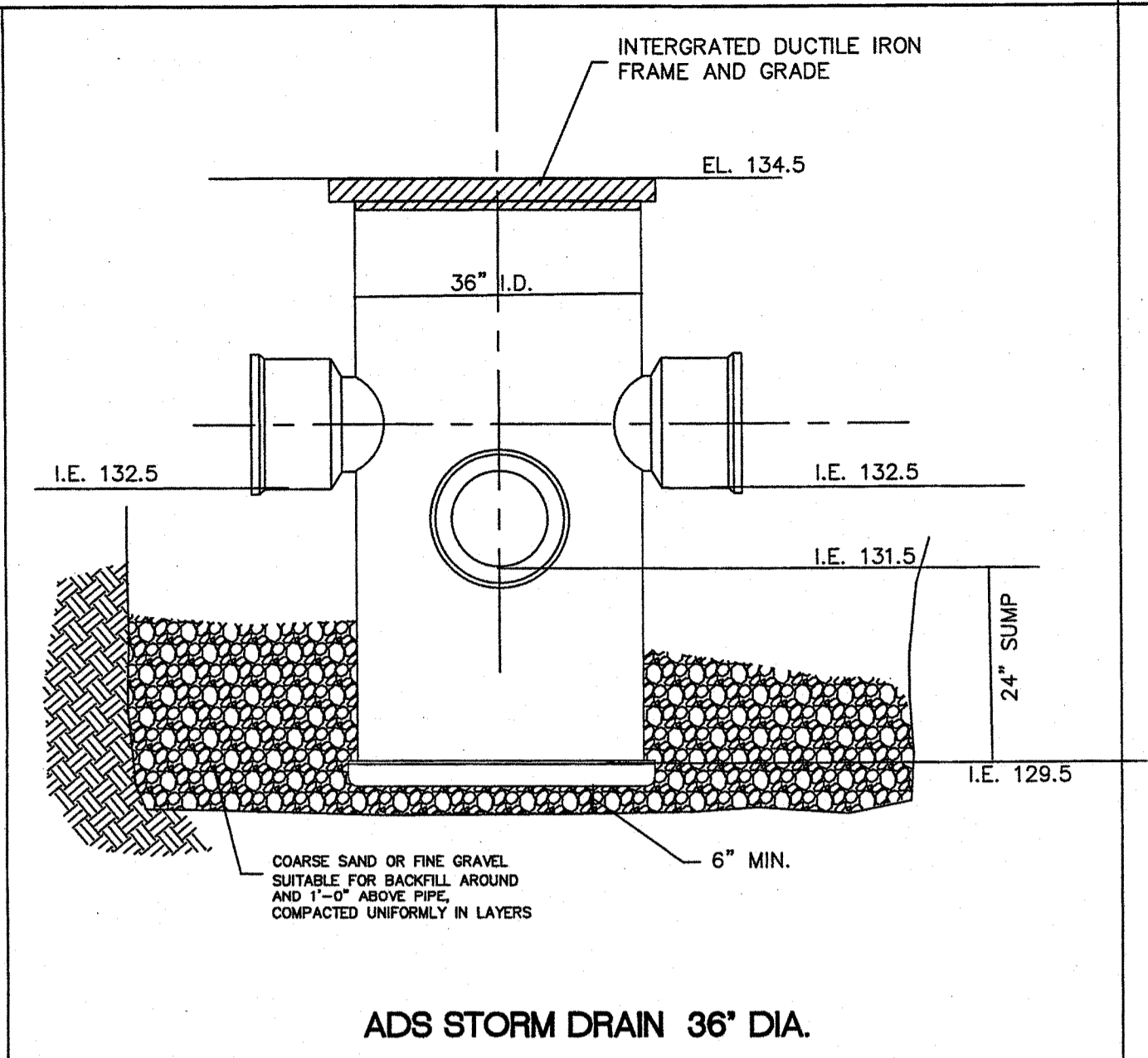
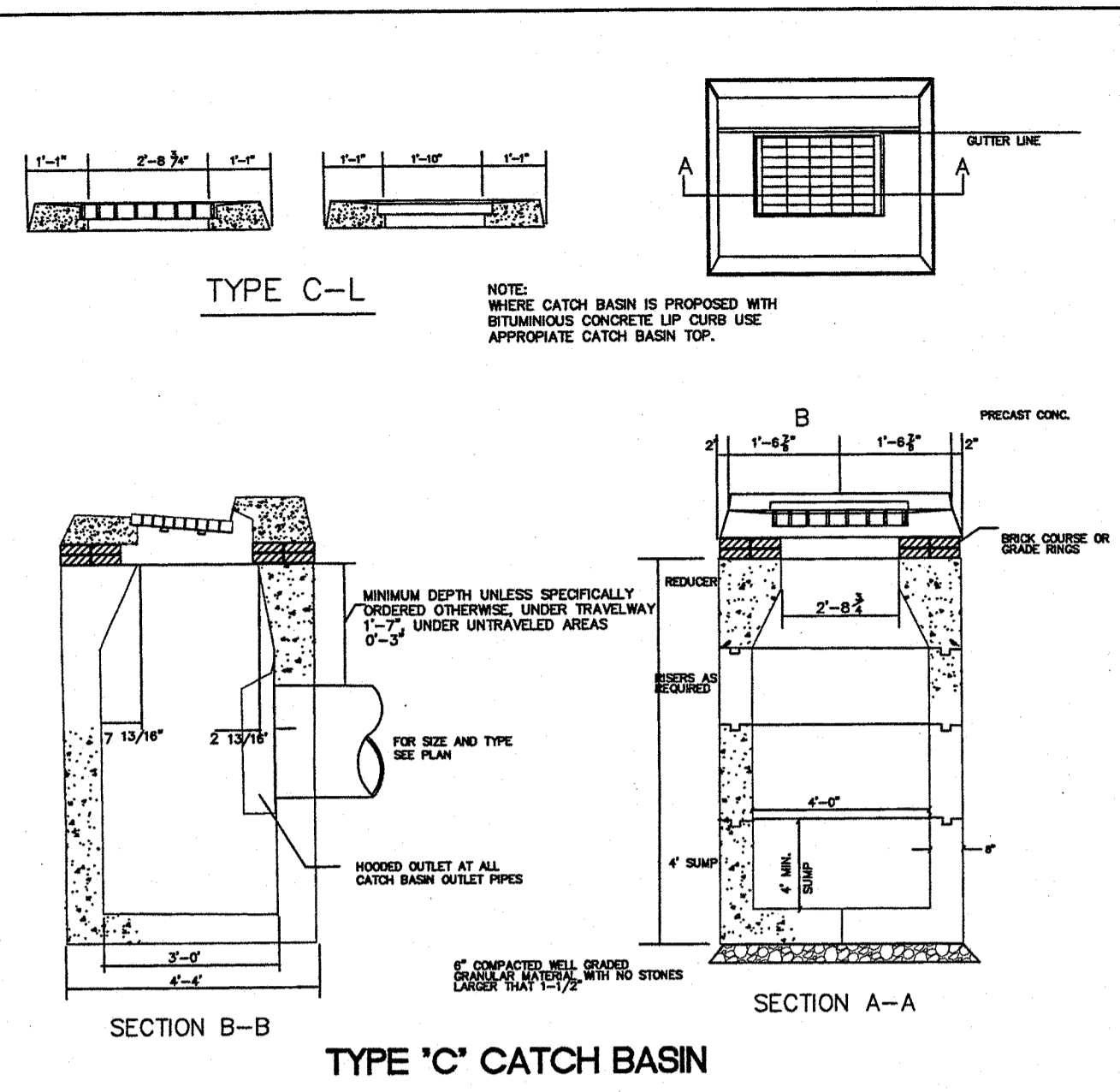
SIGNATURE \_\_\_\_\_ SEAL \_\_\_\_\_

**DESIGN DEVELOPMENT GROUP LLC**  
 CIVIL ENGINEERS / LAND SURVEYORS  
 458 EAST MAIN STREET  
 MERIDEN, CONNECTICUT 06450

**CITY OF MERIDEN**  
 MERIDEN, CONNECTICUT

DRAWING TITLE: **LANDSCAPE PLAN**  
 MILLER AND CATLIN STREET PARKING LOT  
 CONTRACT NO. \_\_\_\_\_

REVISIONS:
DRAWING NO.
SCALE: 1"=20'
DATE: NOV. 2019
SHEET <b>4</b> OF <b>5</b>



NO.	DESCRIPTION	DATE	APP'D

IT IS A VIOLATION OF THE PROFESSIONAL LICENSE LAW FOR ANY PERSON TO ALTER THIS DRAWING IN ANY WAY, UNLESS ACTING UNDER THE DIRECTION OF A LICENSED PROFESSIONAL ENGINEER/SURVEYOR AS APPLICABLE. THE ALTERING ENGINEER/SURVEYOR SHALL AFFIX HIS/HER SEAL AND NOTATION "ALTERED BY" FOLLOWED BY HIS/HER SIGNATURE AND DATE OF ALTERATION

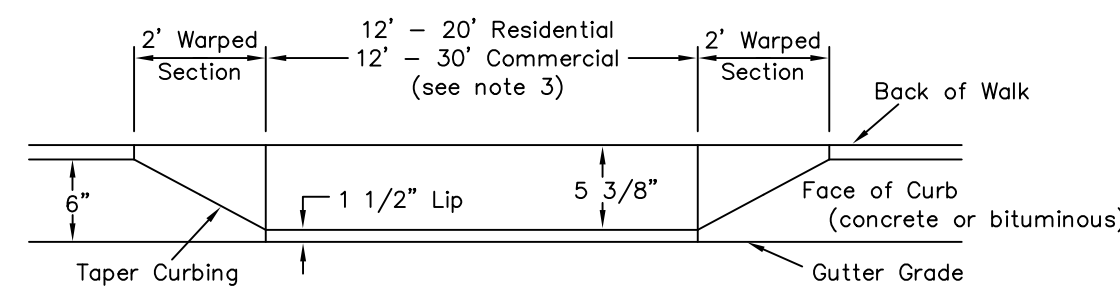
SURVEYED BY:	
DRAWN BY:	
DESIGNED BY:	
CHECKED BY:	
SIGNATURE	SEAL

**DESIGN DEVELOPMENT GROUP LLC**  
 CIVIL ENGINEERS / LAND SURVEYORS  
 458 EAST MAIN STREET  
 MERIDEN, CONNECTICUT 06450

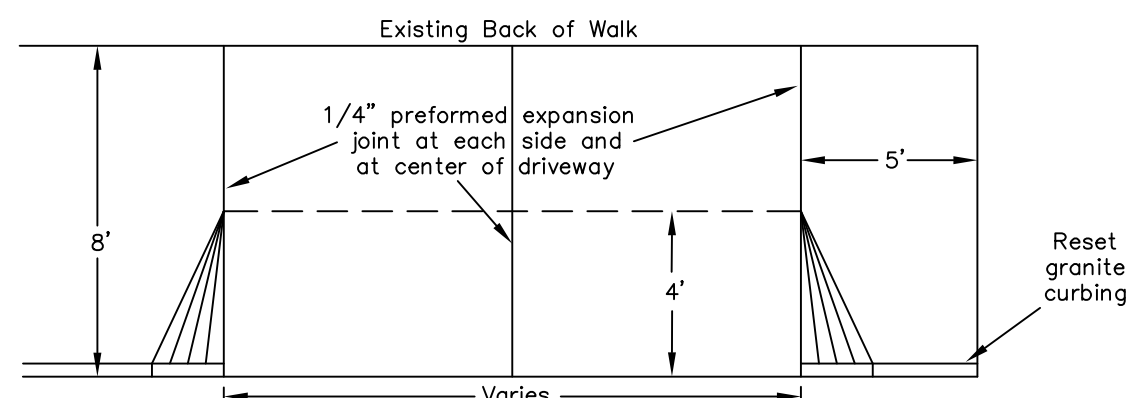
DRAWING TITLE: **DETAILS**  
 MILLER AND CATLIN STREET PARKING LOT  
 CONTRACT NO.:

REVISIONS:	
DRAWING NO.	
SCALE:	1"=20'
DATE:	NOV. 2019
SHEET	5 OF 5

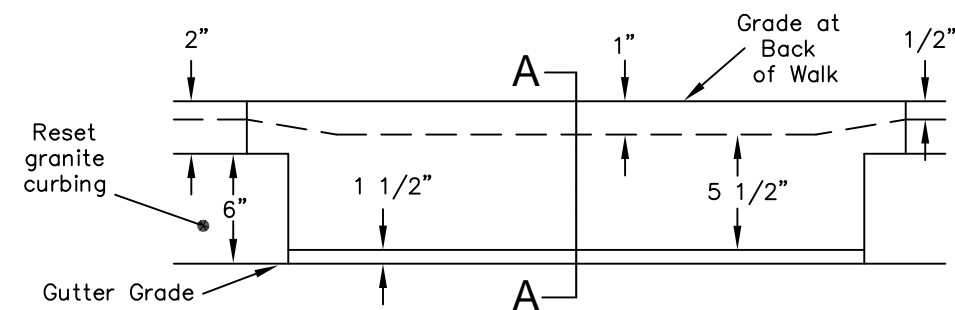
# DRIVEWAYS



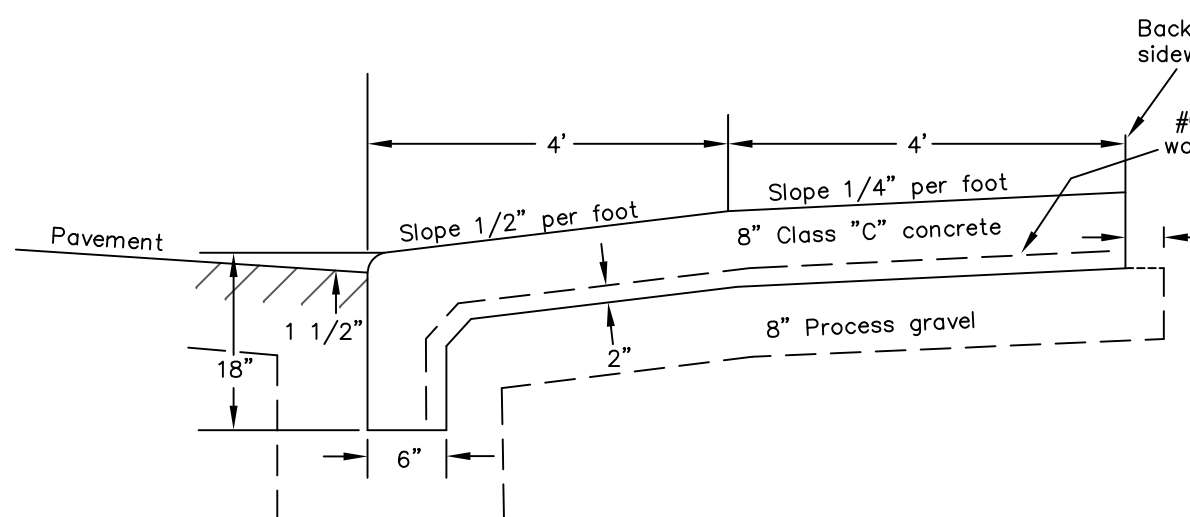
Profile  
Typical Driveway



Plan



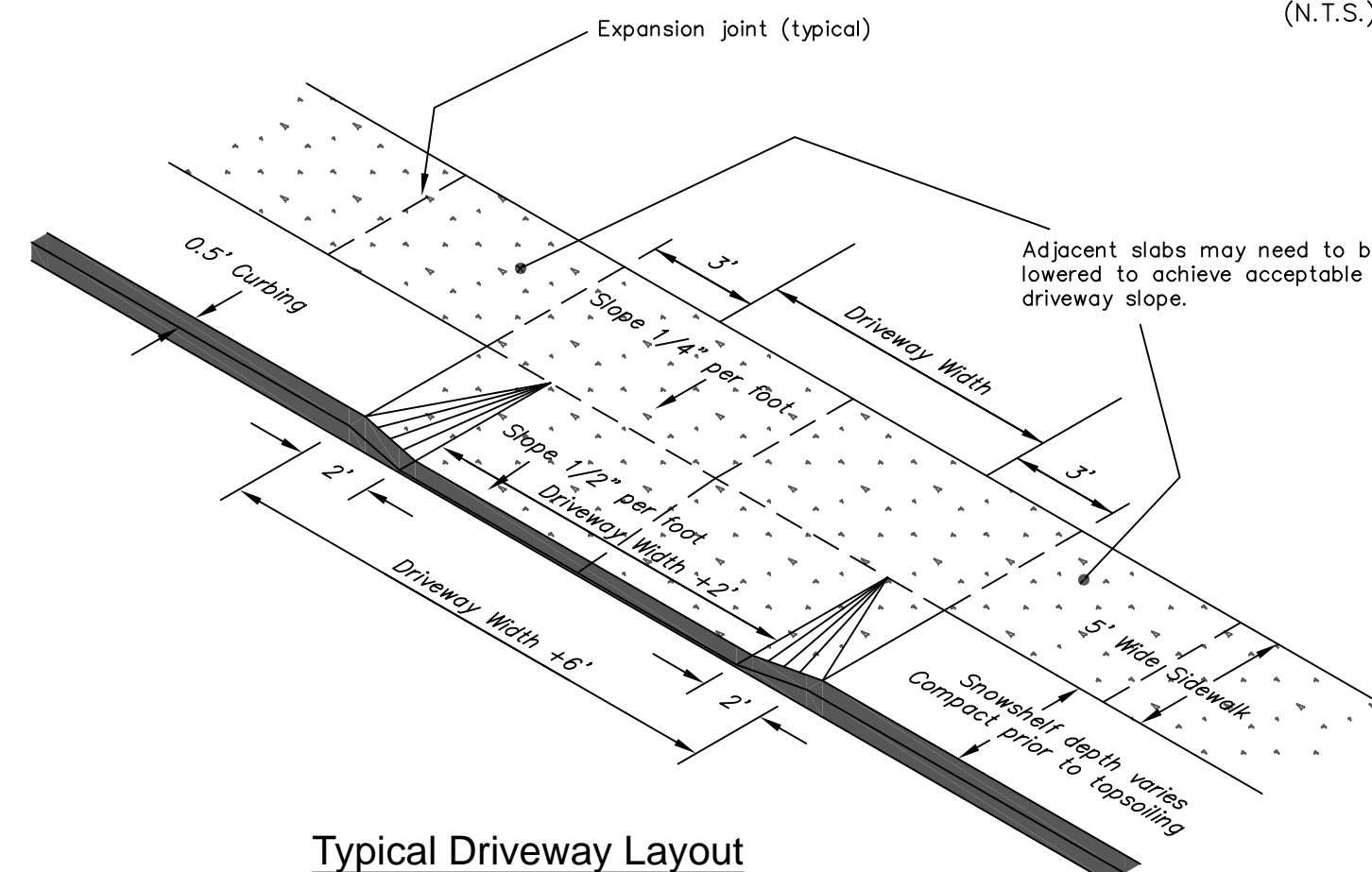
Profile



Residential Concrete Apron Replacement  
(N.T.S.)

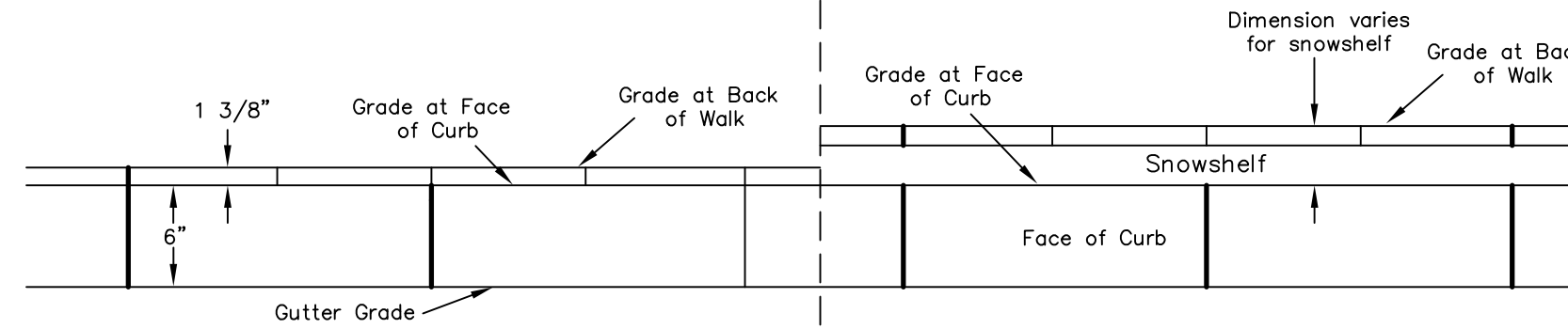
**NOTES:**

1. Width to accommodate mechanical compaction as approved by Engineering Department.
2. Buffer strips to be a minimum of 5' wide for new trees. Species to be approved by City Planner.
3. Driveway widths will be based upon field conditions and Planning Department approval. Maximum width will be 20' for residential or 30' for commercial property unless otherwise approved by the Planning Department.
4. Entire sidewalk sections may need to be lowered to achieve slope or as instructed by Engineering Department.
5. Bond breaker must be placed between concrete and all metal fixtures within sidewalk area.
6. Refer to Connecticut DOT sidewalk guidesheets for accessible ramp details.

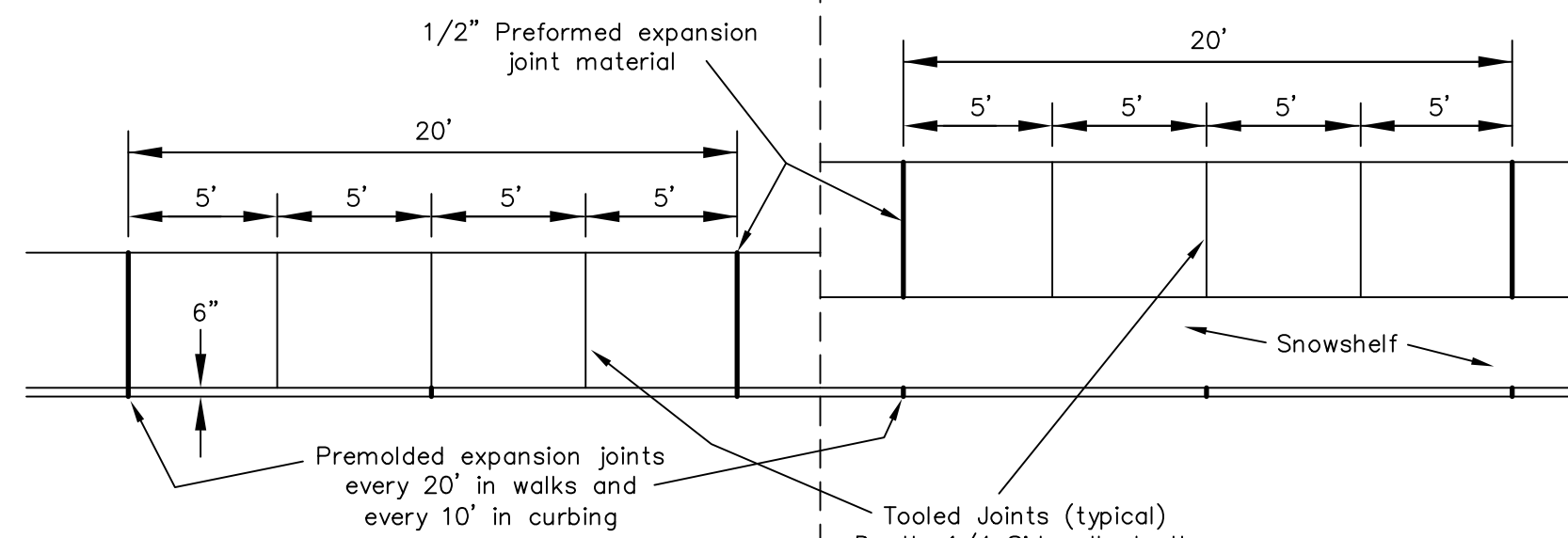


Typical Driveway Layout

# SIDEWALK AND CURBING



Profile



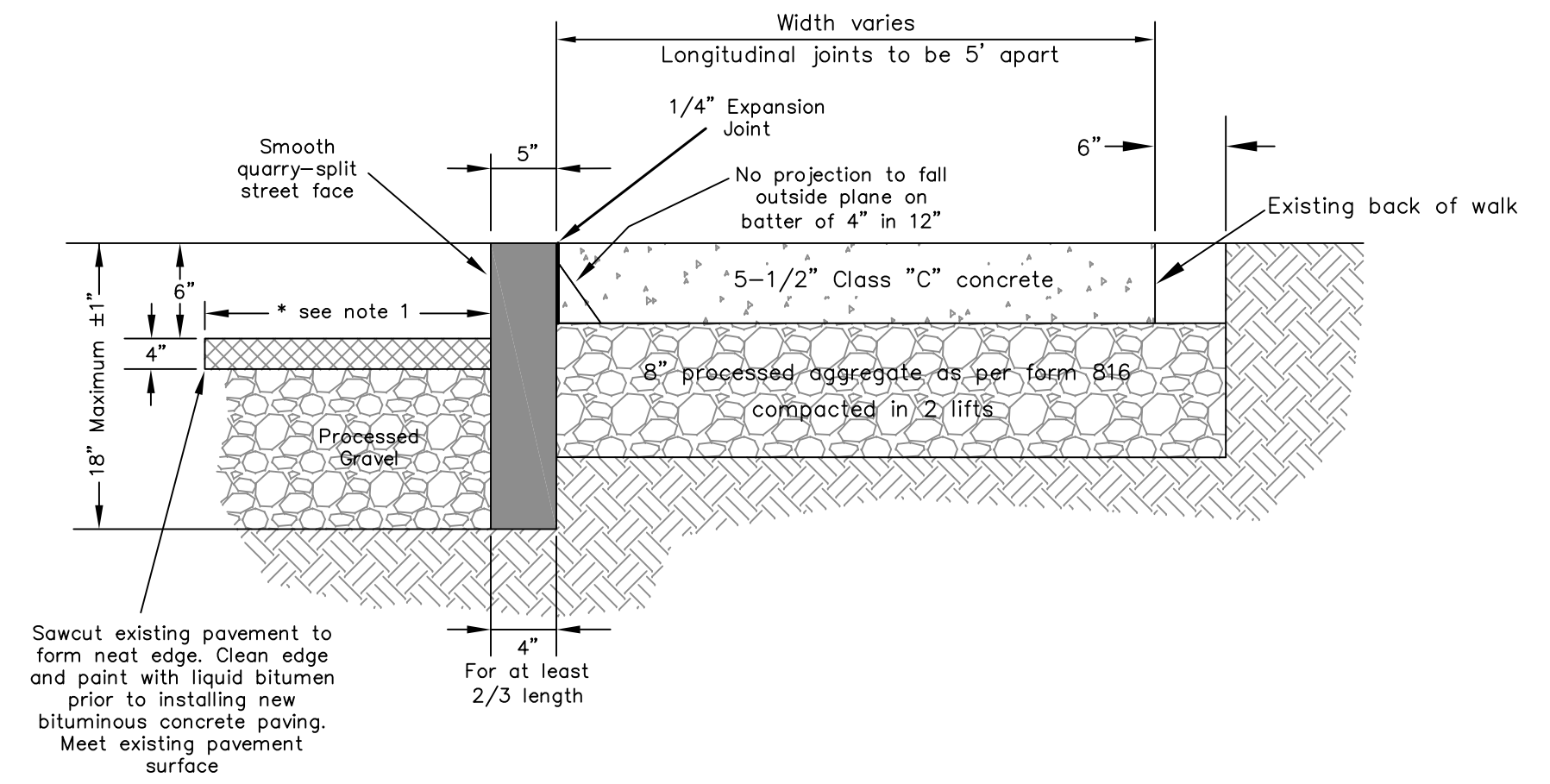
Monolithic Sidewalk Plan

CONCRETE SHALL BE CLASS 'C' AND 3300 PSI OR BETTER (N.T.S.)

Concrete Curbing and Walk

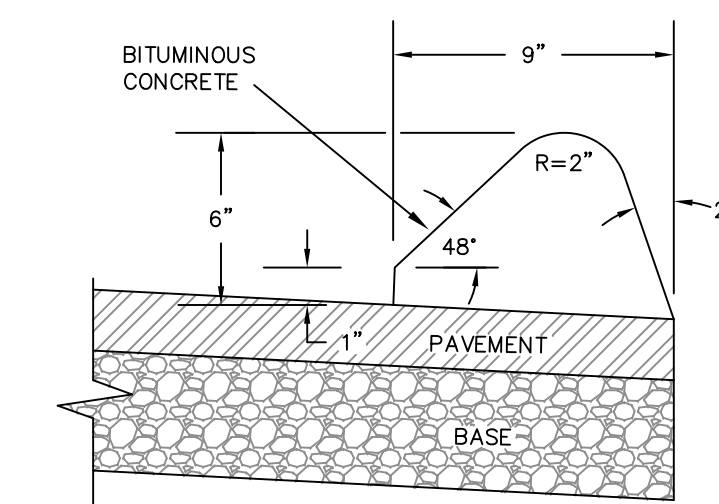
(N.T.S.)

# CURBING

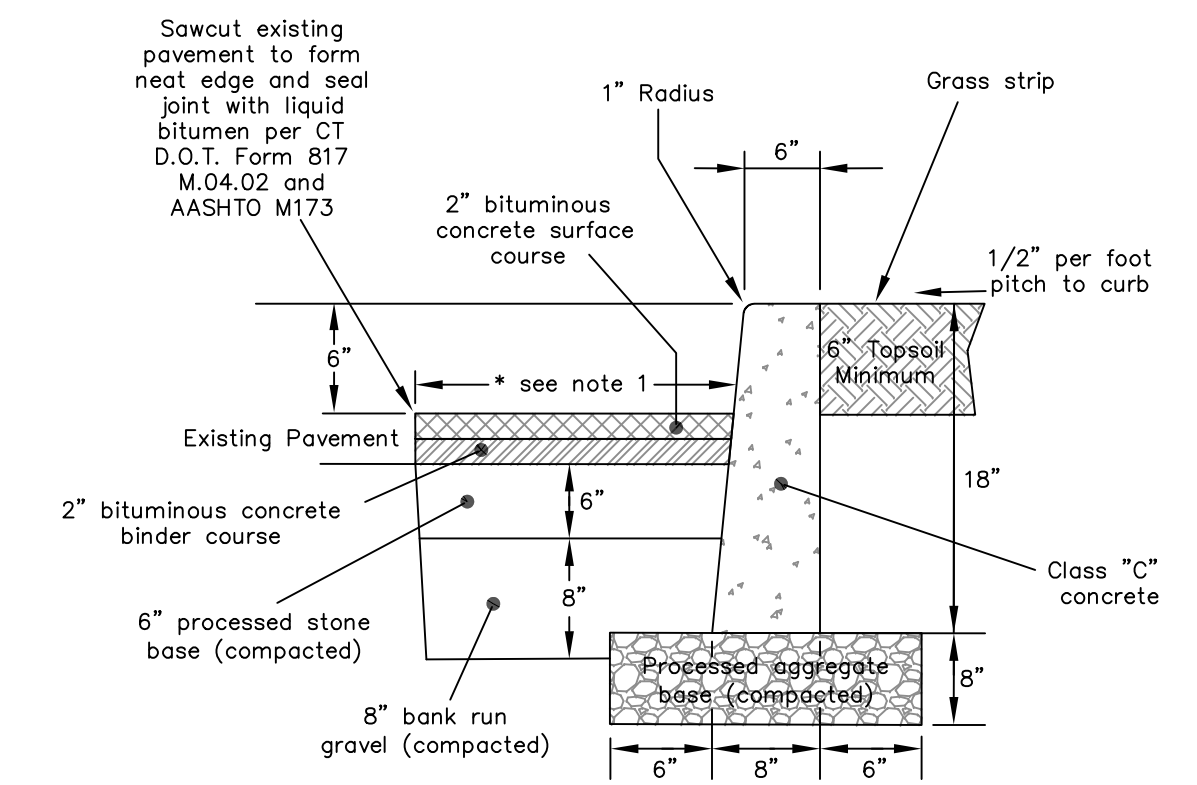


Granite Curbing

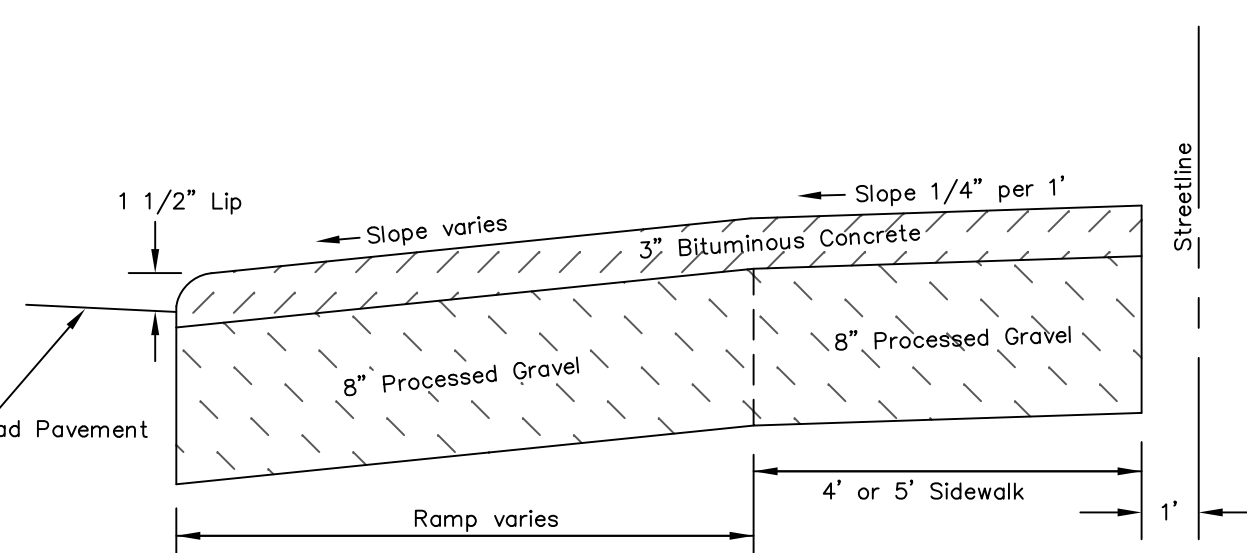
(N.T.S.)



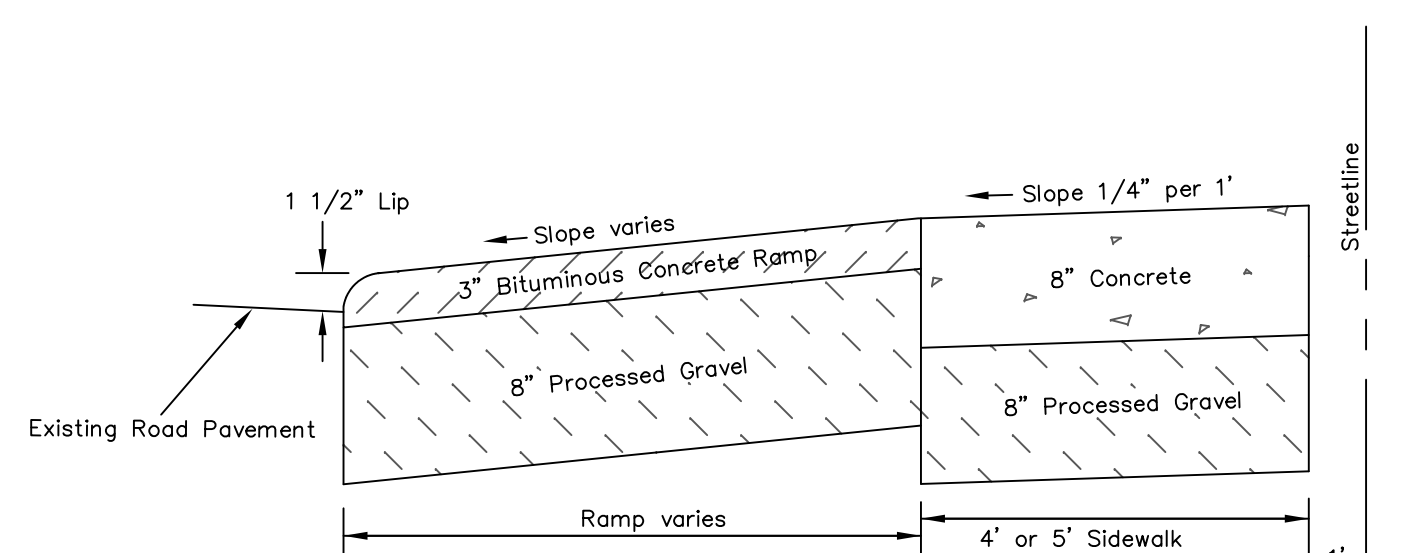
Bituminous Concrete Lip Curbing  
Machine Formed



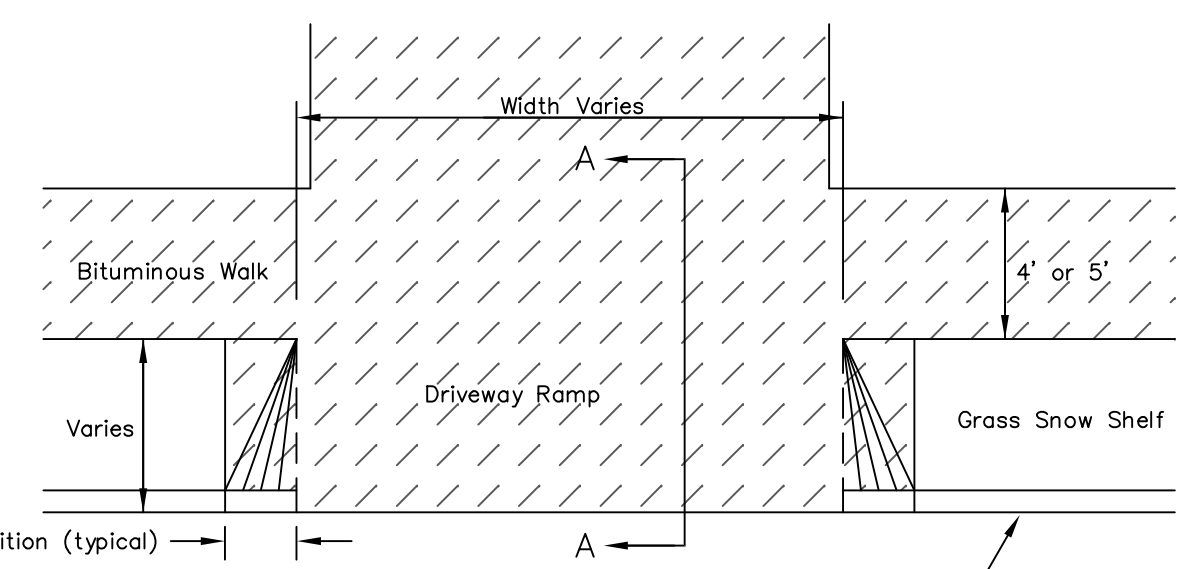
Poured in Place Concrete Curb



Section A-A



Section B-B

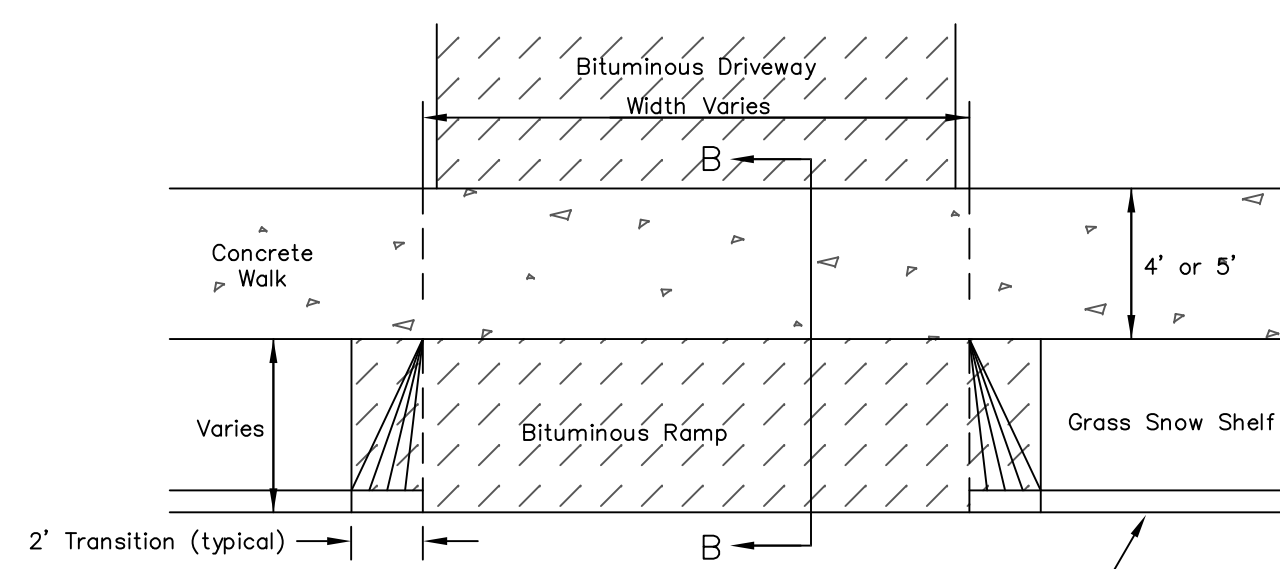


Plan

Residential Bituminous Driveway and Sidewalk

(N.T.S.)

NOTE: Only allowed in outer district and with approval of Planning Commission



Plan

Residential Concrete Sidewalk with Bituminous Apron

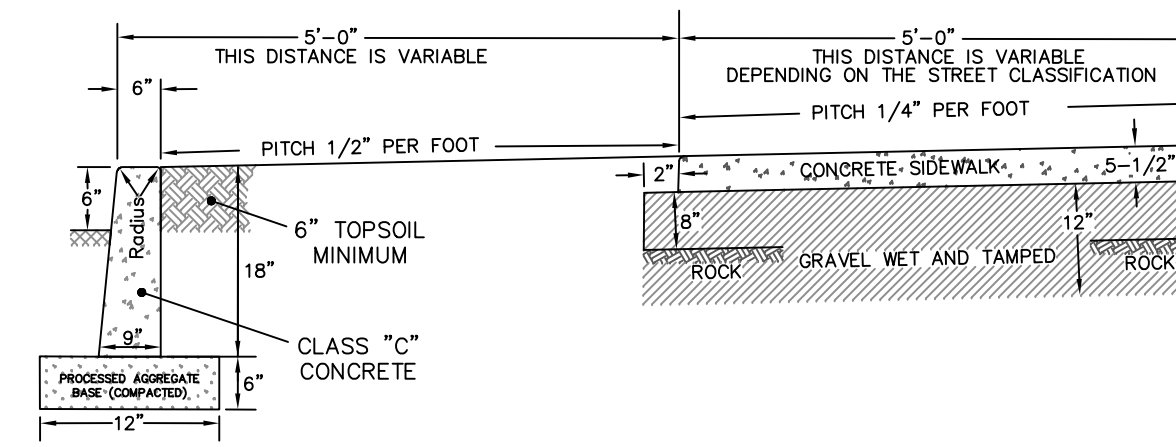
(N.T.S.)

NOTE: Only allowed upon approval of the City of Meriden Engineering Department

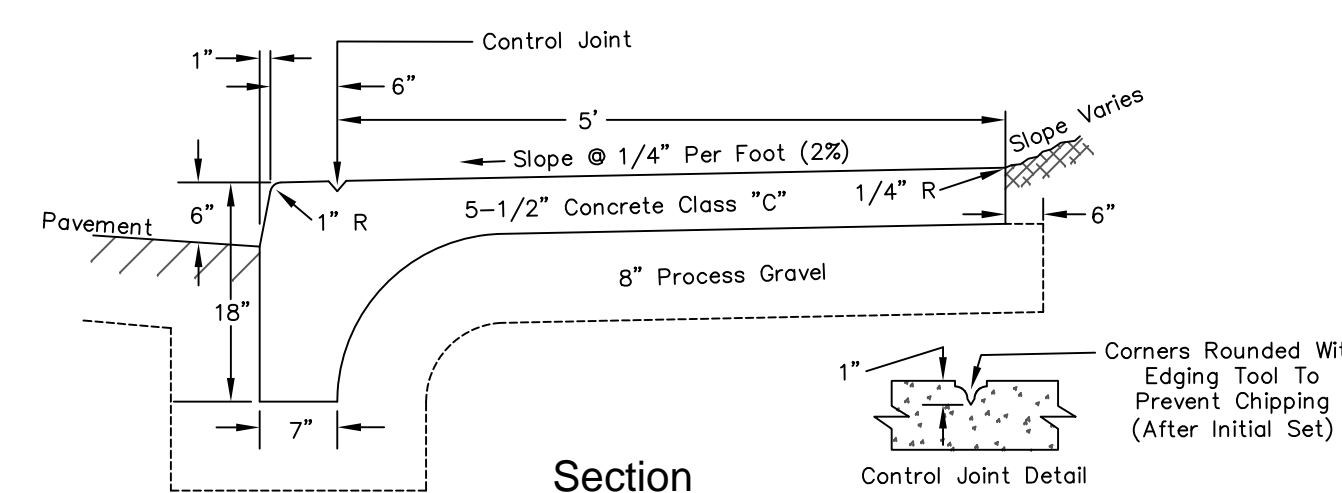
**CURBING**  
CONCRETE CURBING WILL BE INSTALLED IN ACCORDANCE WITH STATE OF CONNECTICUT DEPARTMENT OF TRANSPORTATION STANDARD SPECIFICATIONS FORM 817, SECTION 8.11 EXCLUDING PARAGRAPHS 8.11.04 AND 8.11.05 FOR MEASUREMENT AND PAYMENT.

**CONCRETE WALKS**  
CONCRETE WALKS WILL BE INSTALLED IN ACCORDANCE WITH STATE OF CONNECTICUT DEPARTMENT OF TRANSPORTATION STANDARD SPECIFICATIONS FORM 817, SECTION 9.21 EXCLUDING PARAGRAPHS 9.21.04 AND 9.21.05 FOR MEASUREMENT AND PAYMENT.

NOTE: Sidewalks must be formed with 2"x6" lumber or 5-1/2" high metal or wood forms



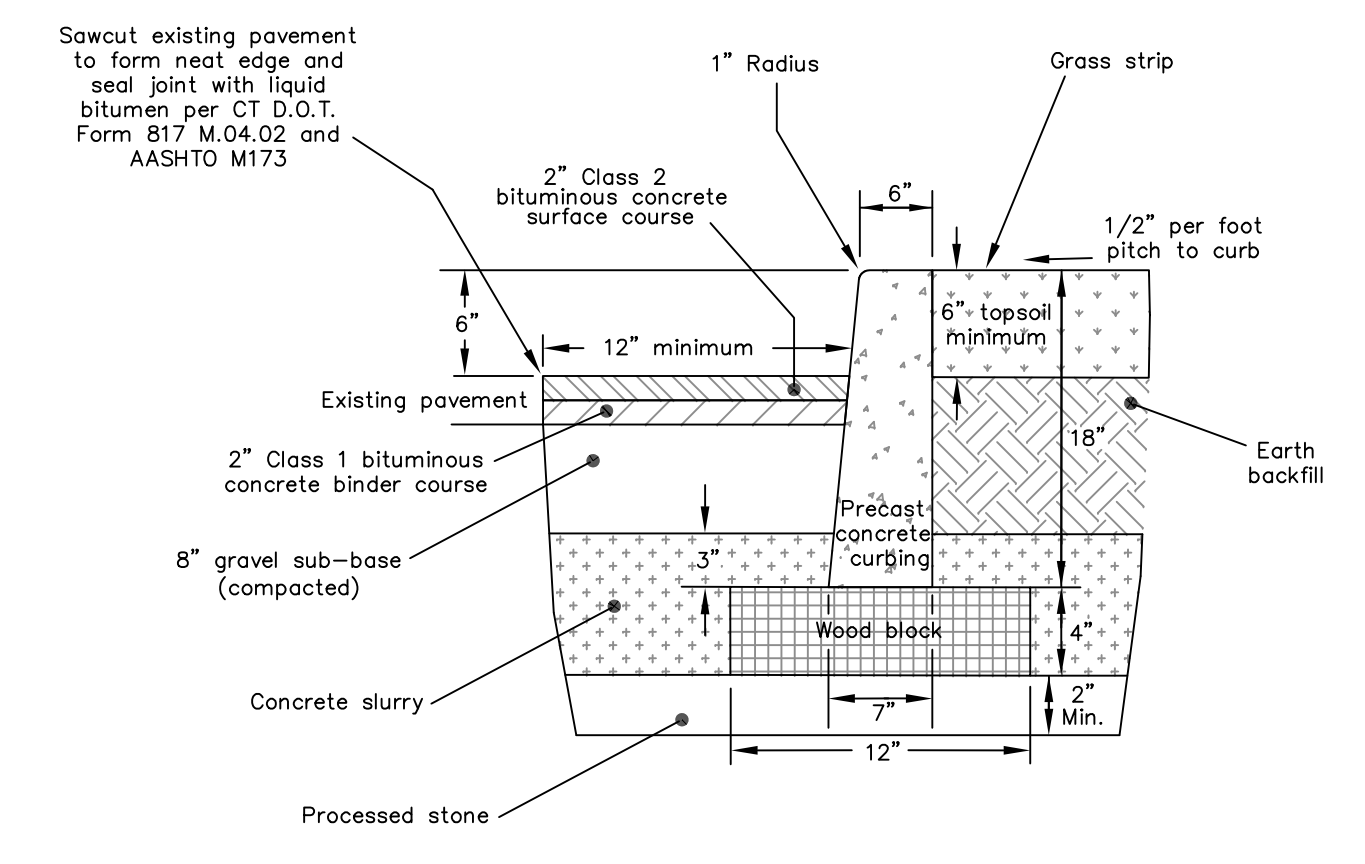
Typical Curb & Sidewalk



Section

Typical Monolithic Curb & Sidewalk

NOTE: Sidewalks must be formed with 2"x6" lumber or 5-1/2" high metal or wood forms



Precast Concrete Curb Detail

Not To Scale

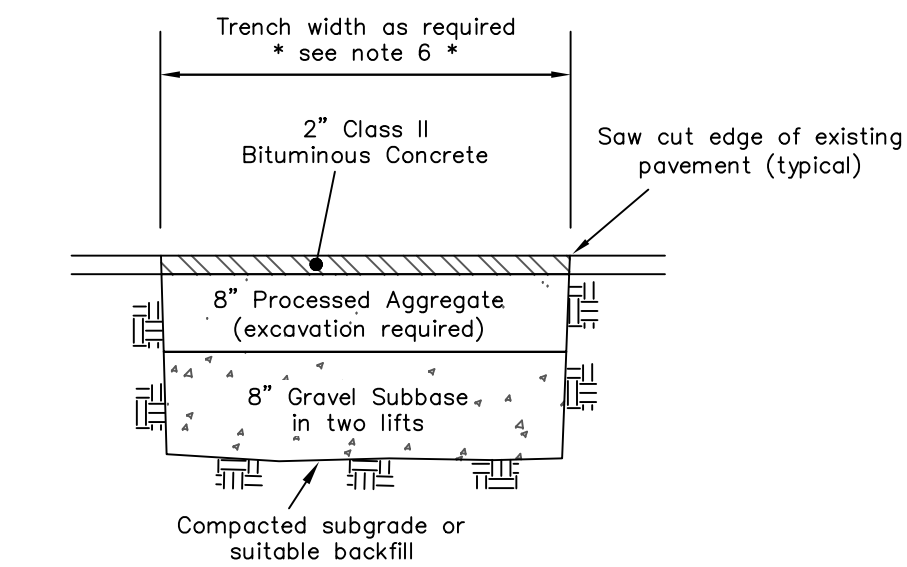
## Detail Sheet Sidewalk and Driveway Standards

DEPARTMENT OF PUBLIC WORKS

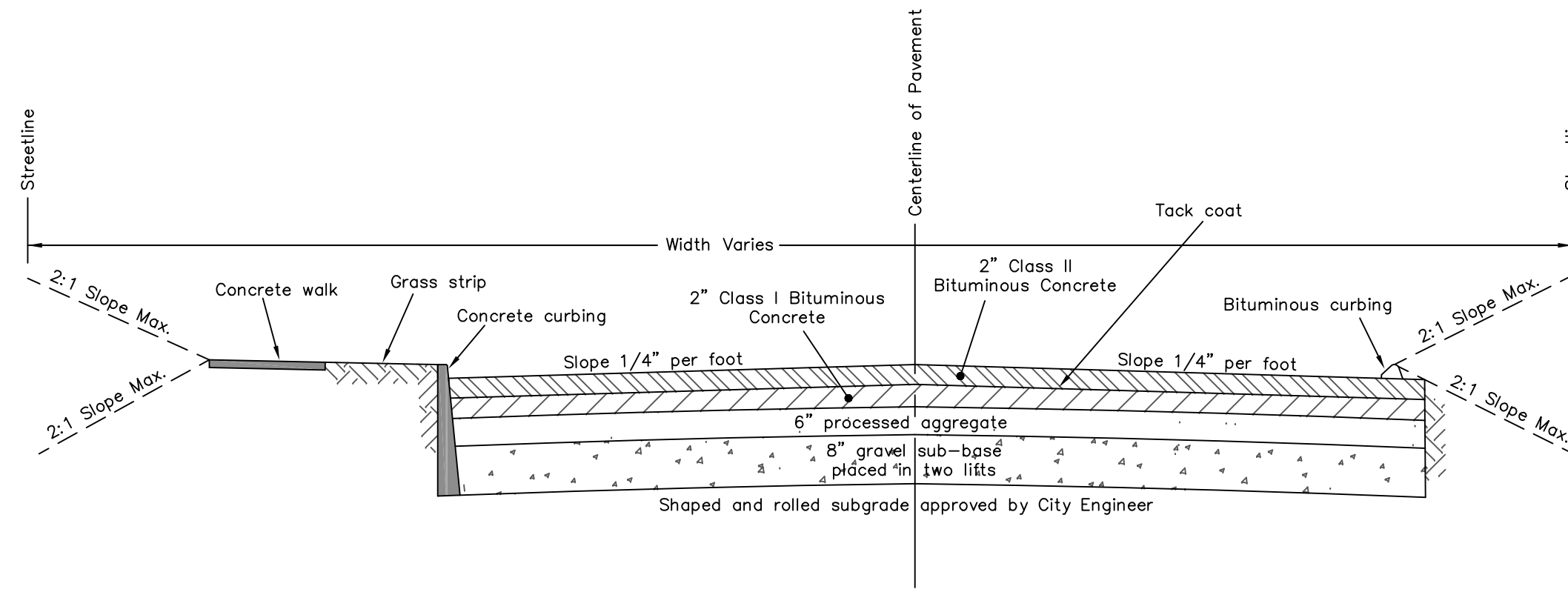
Engineering Division

City Hall  Room 19  
Meriden, Connecticut

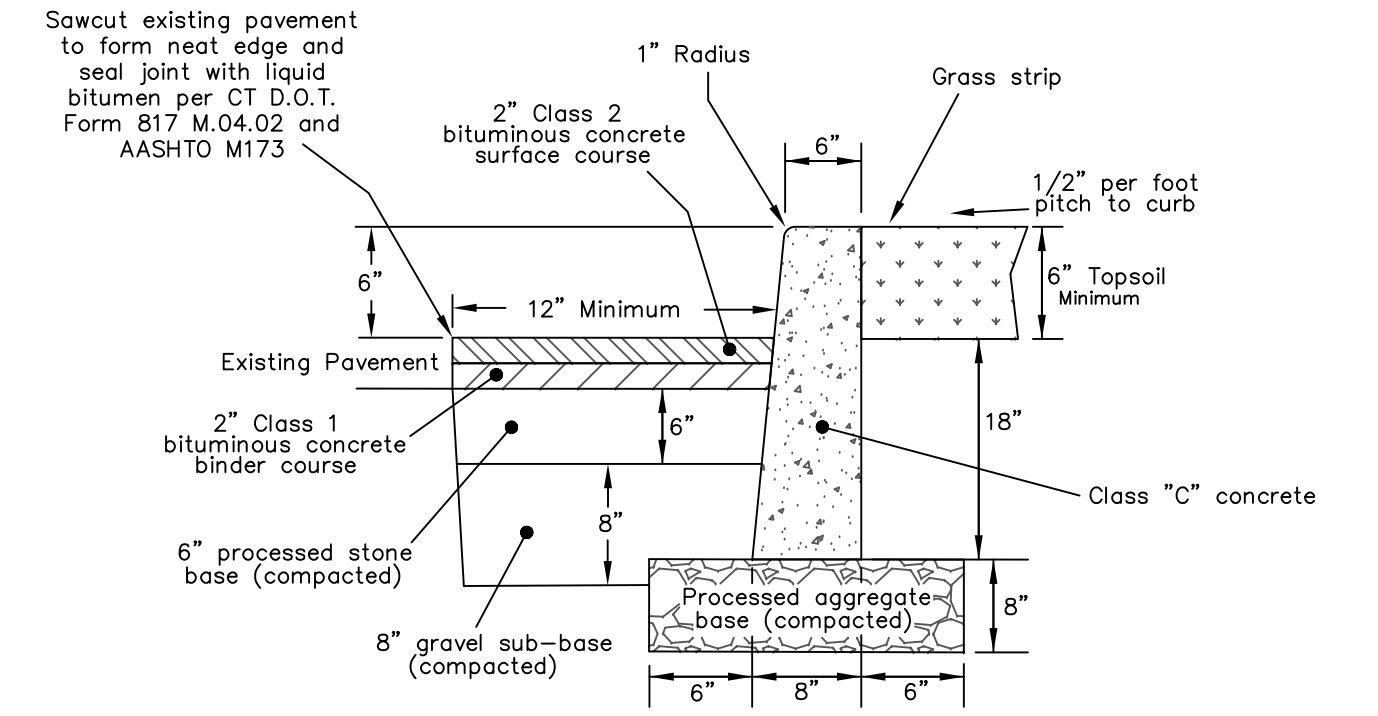
DATE: 2/20/19  
DESIGN: BBD  
DRAWN: BBD  
SCALE: Not to Scale  
DWG.  
SHEET 1 OF 1



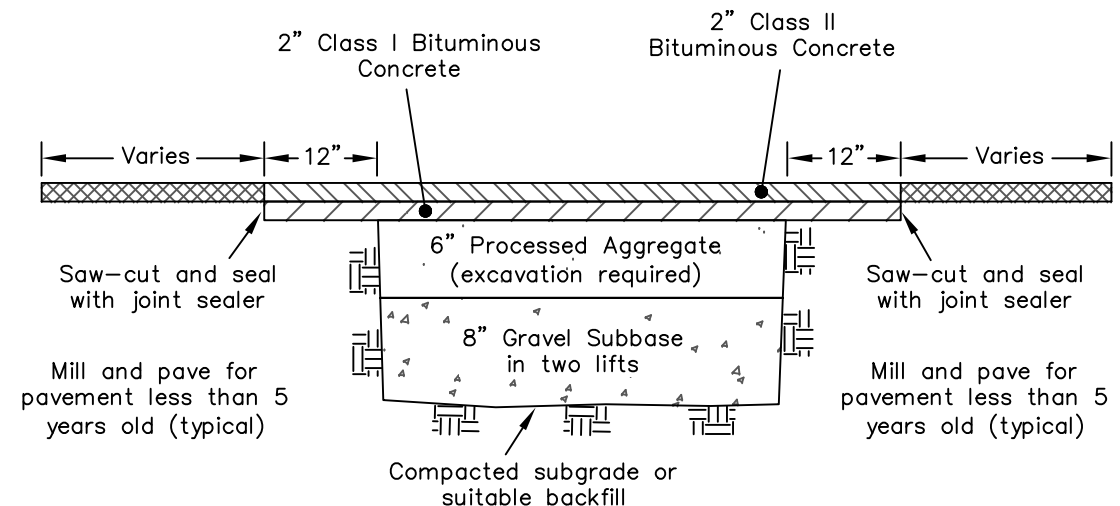
**Temporary Pavement Repair Detail**  
Not To Scale



**Street Cross Section**  
Not To Scale

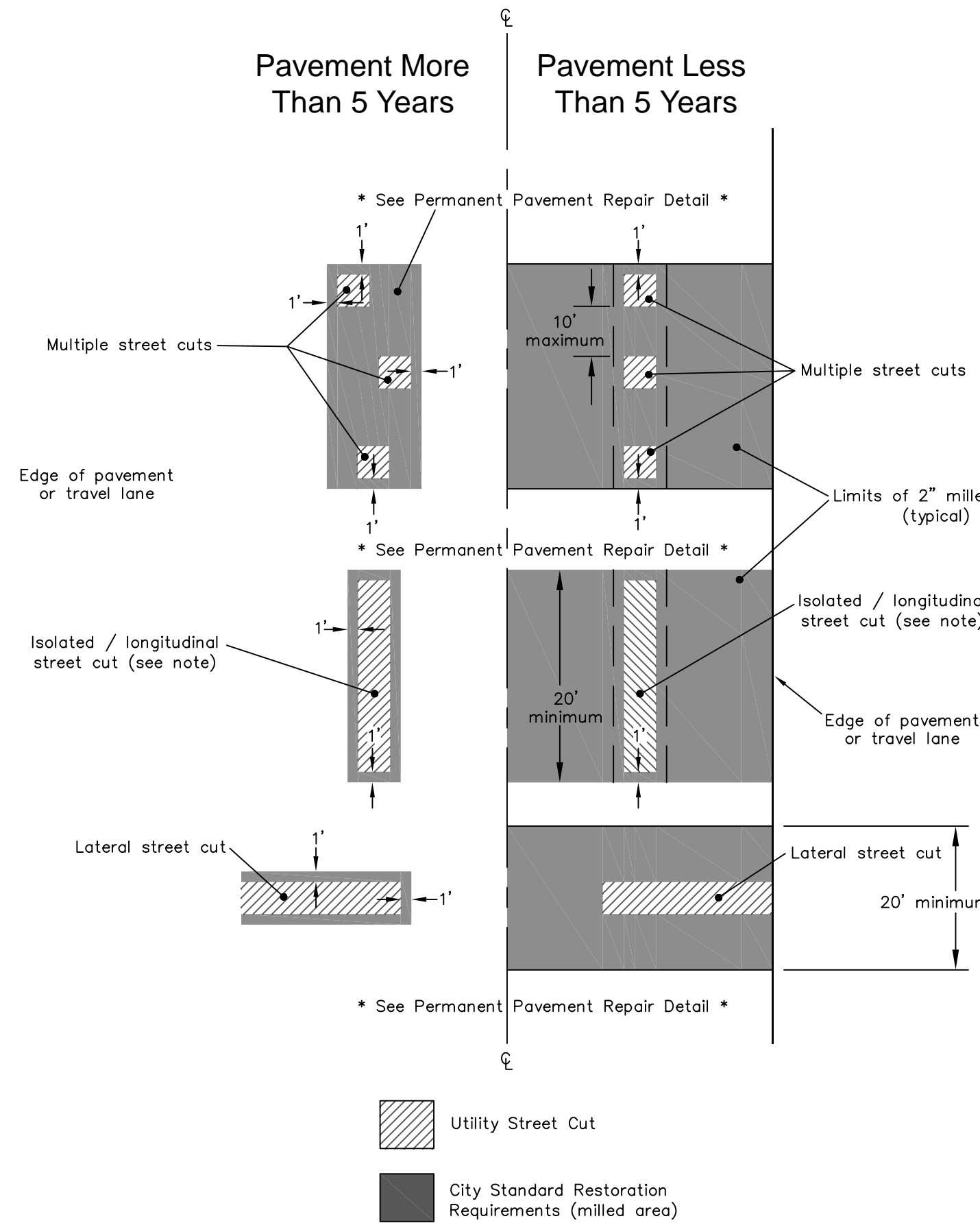


**Poured in Place Concrete Curb Detail**  
Not To Scale



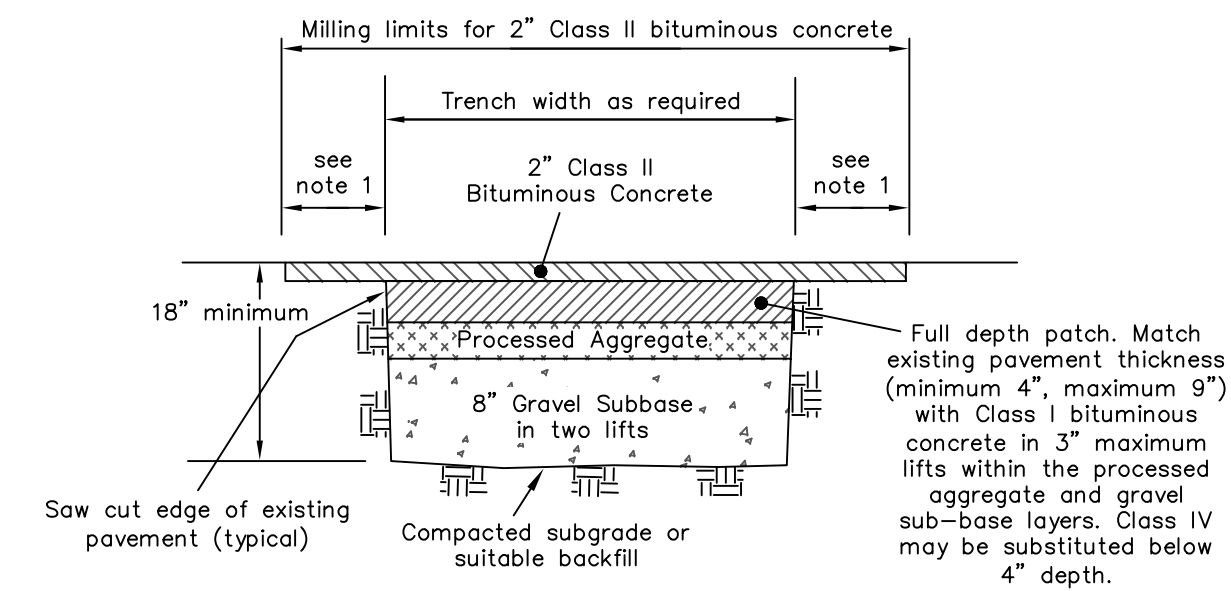
NOTE: Match existing pavement thickness up to 9" with Class I bituminous concrete in 3" maximum lifts.

**Permanent Pavement Repair Detail**  
Not To Scale



NOTE: Alternate repair methods may be acceptable upon approval of City Engineer.

**Pavement Restoration Detail**  
Not To Scale



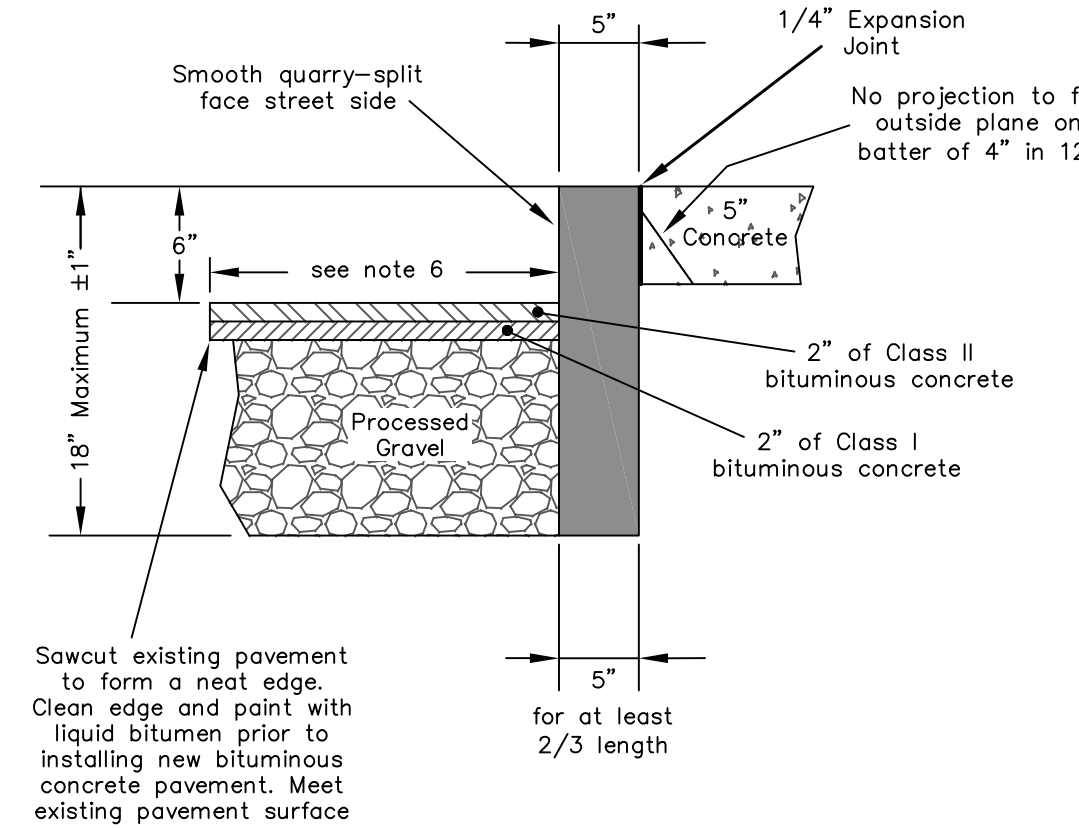
1. 12" minimum width to be determined for trenches greater 100 feet long or pavement less than 5 years old.
2. Milling to occur no earlier than 6 months after full depth patch is placed and one winter season.
3. Tack coat required on all vertical and horizontal faces.
4. Joint sealer to be placed on all final surface joints.

**Alternate Pavement Repair Detail \***

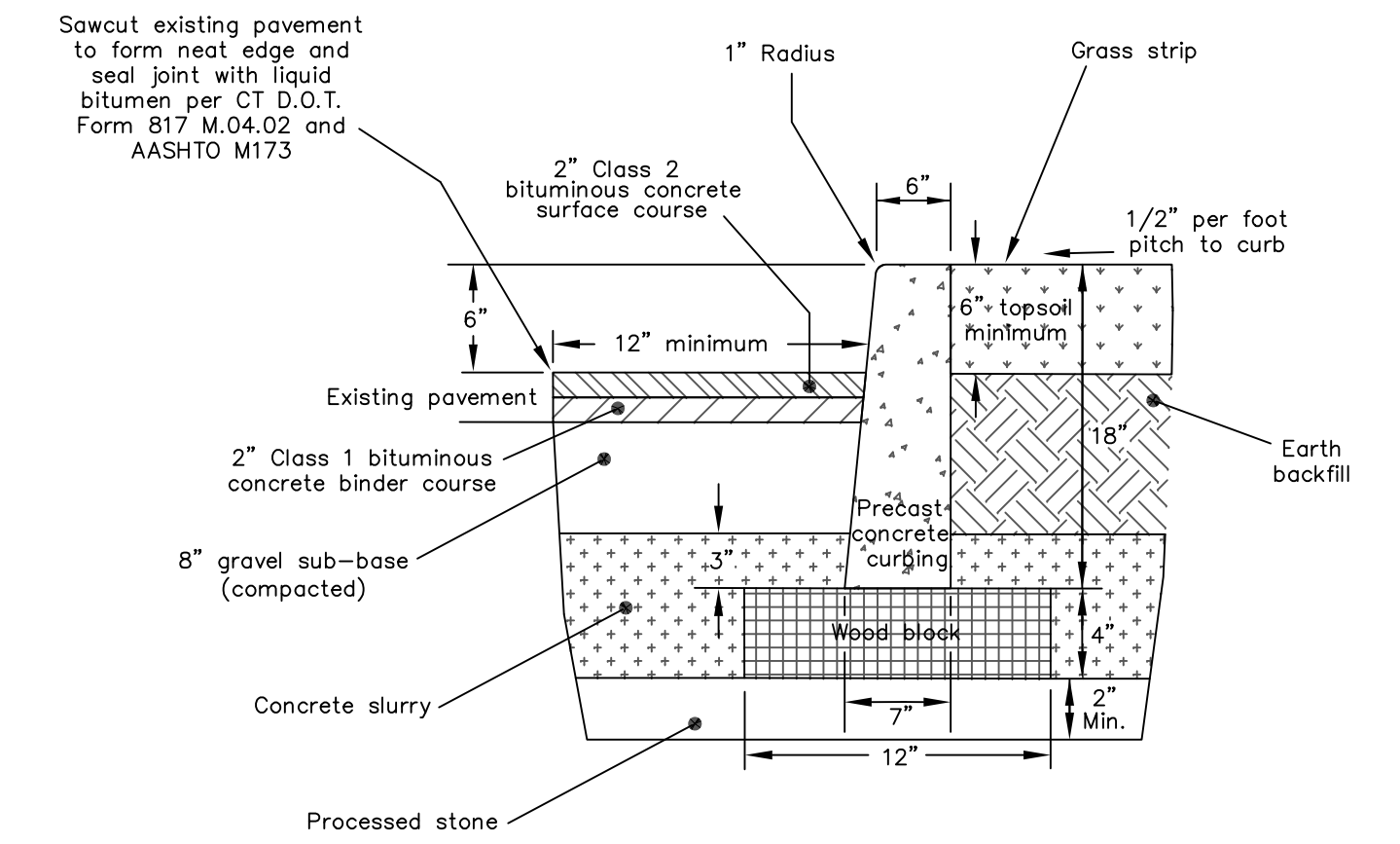
\* Allowed only with advance permission from the Department of Public Works  
Not To Scale

**ROADWAY STANDARD NOTES:**

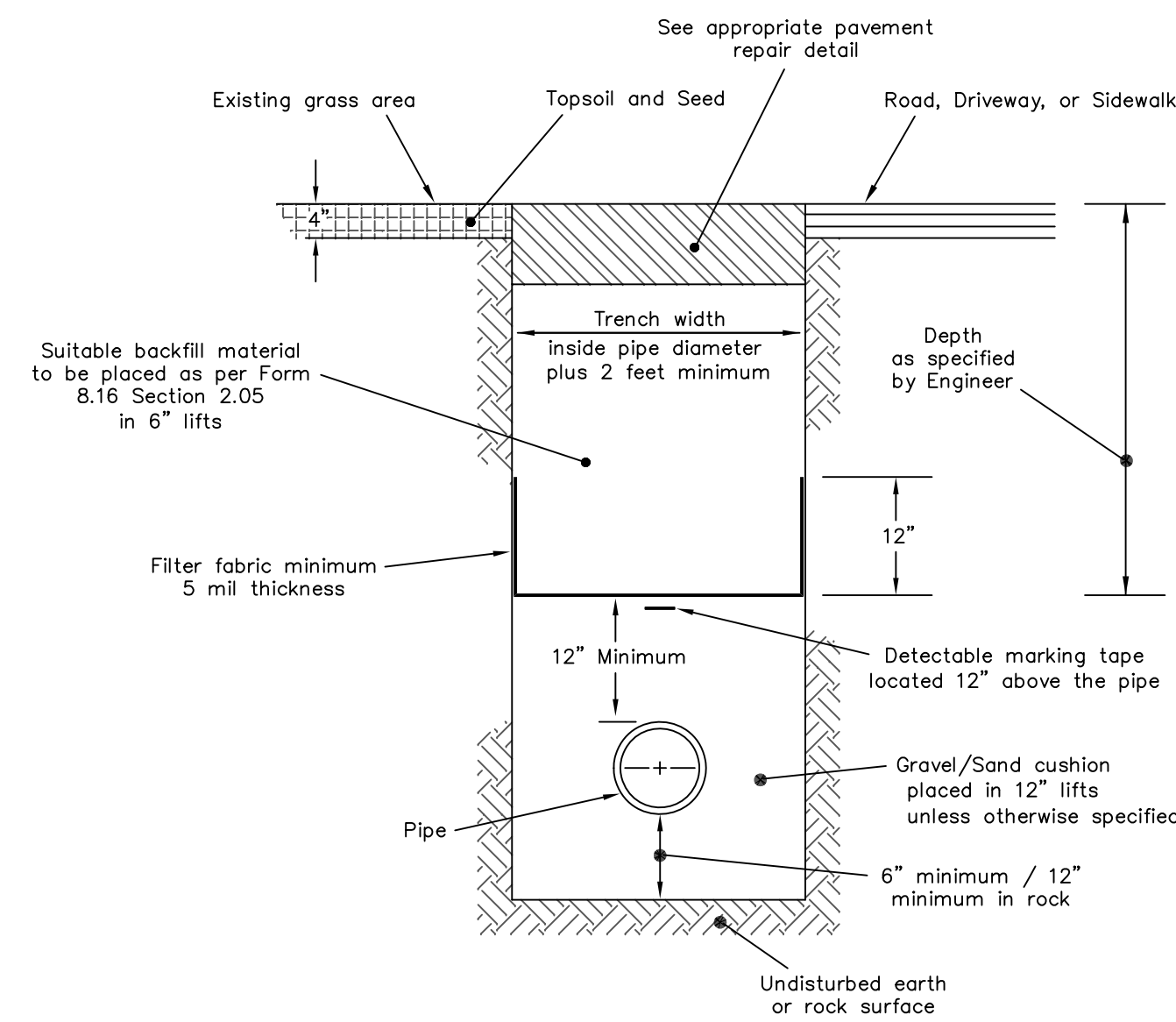
1. The Contractor shall contact "Call Before You Dig" at 1-800-922-4455 for location and marking of all existing utilities prior to any excavation.
2. The City Public Works Facility Inspector must be notified by the Contractor a minimum of 48 hours prior to beginning construction.
3. Multiple pavement repair locations are to be a minimum of 10 feet apart from any adjacent repair. If less than 10 feet apart, a continuous section must be replaced. Milling is acceptable outside the patch repair limits.
4. All repairs to streets with a pavement surface less than 5 years old are to extend to the full width of the travel lane or to the edge of the roadway.
5. Temporary patches shall be in place a minimum of 6 months, including one winter / spring season.
6. Patch area must be wide enough to accommodate mechanical compaction equipment.



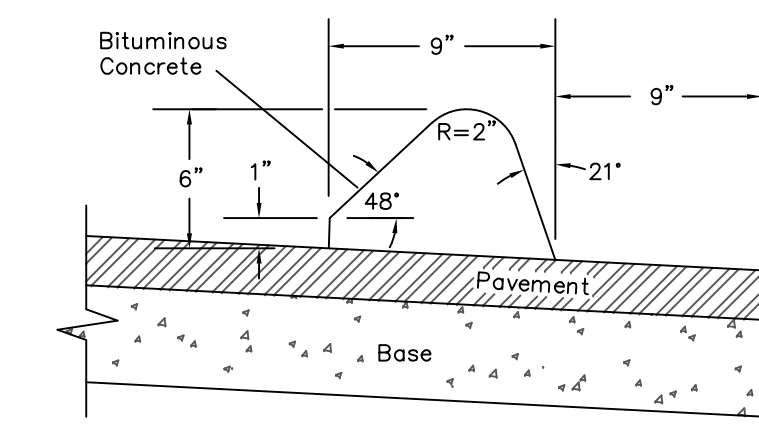
**Reset Granite Curbing Detail**  
Not To Scale




**Precast Concrete Curb Detail**  
Not To Scale



**Typical Trench Section**  
Not To Scale



**Bituminous Concrete Lip Curbing - Machine Formed**  
Not To Scale

<b>Detail Sheet</b>		DATE: 02/13/2019
<b>Pavement Standards</b>		DESIGN: BBD
DEPARTMENT OF PUBLIC WORKS		DRAWN: BBD
<b>Engineering Division</b>		SCALE: Not to Scale
City Hall  Room 19		DWG.
Meriden, Connecticut		SHEET 1 OF 1