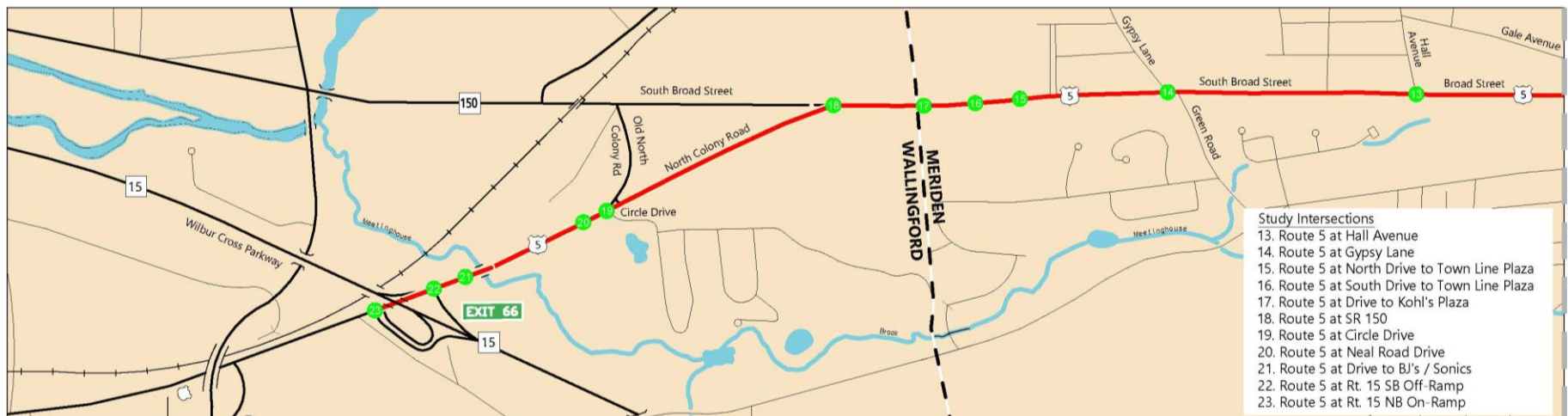


# Route 5 Corridor Study Public Meeting #2



**SOUTH CENTRAL REGIONAL COUNCIL OF GOVERNMENTS**  
*Planning for Our Region's Future*



# Meeting Presenters

- Stephen Dudley, SCRCOG
- Howard Weissberg, City of Meriden
- Joe Balskus, VHB – Design Consultant and Project Manager

# Meeting Agenda

- Introductions
- Virtual Meeting Format
- Study Team
- Public Info Meeting 1 Review
- Future Conditions Assessment
  - Review Improvement Concepts
  - Traffic Analysis
- Questions
- Next Steps



# Virtual Meeting Format

- Presentations by Study Team
  - SCRCOG
  - City/Town
  - VHB/VN Engineers - Consultants
- Public Participation
- Listen and View Mode During Presentation
- Questions Submitted to Presentation Moderator – City of Meriden
- Answers Provided by Study Team
- Additional Comments Can Be Provided Directly to SCRCOG

[sdudley@scrcog.org](mailto:sdudley@scrcog.org)





# Study Advisory Committee

## **SCRCOG**

- Stephen Dudley

## **Meriden**

- Renata Bertotti
- Joe Feest
- Howard Weissberg

## **Wallingford**

- Robert Baltramaitis
- Kacie Costello
- Chief William Wright
- Lt. Anthony Demaio

## **Midstate Chamber**

- Rosanne Ford
- Ralph Mesite

## **CTDOT**

- Fred Kulakowski
- Kevin Ng
- Ed Sabourin
- Edgar Wynkoop

## **Study Consultant Team**

- VHB/VN Engineers

# Visioning

## North Wallingford

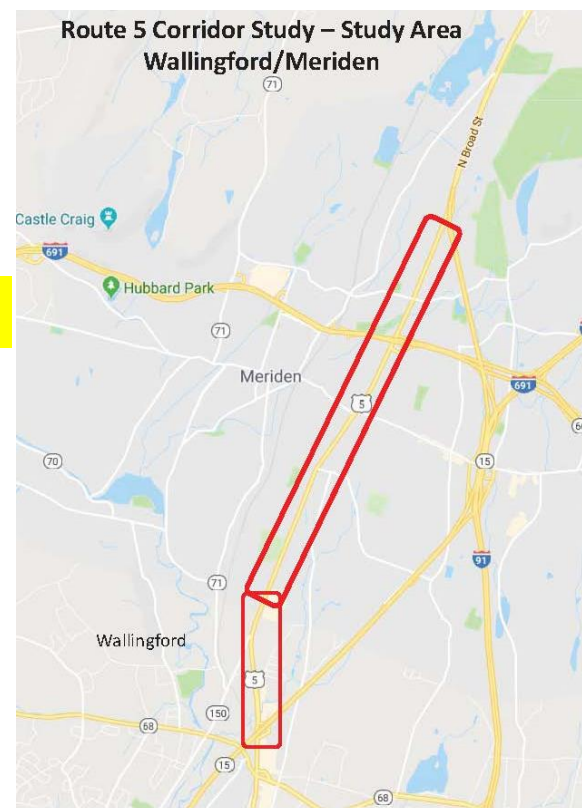
*The Route 5 corridor study shall ensure that excellent access for area residents to the retail development is maintained while recommending improvements to reduce the crash history and maximize multimodal mobility.*

## Meriden

*The Route 5 corridor study shall ensure that access, traffic flow, and safety measures for the City's main North-South corridor provide intuitive connections to residents and businesses to services and destinations that support the area's economic growth and prosperity. The goal of the study is to identify improvements that can be implemented in the near- and long-term.*

# Study Purpose

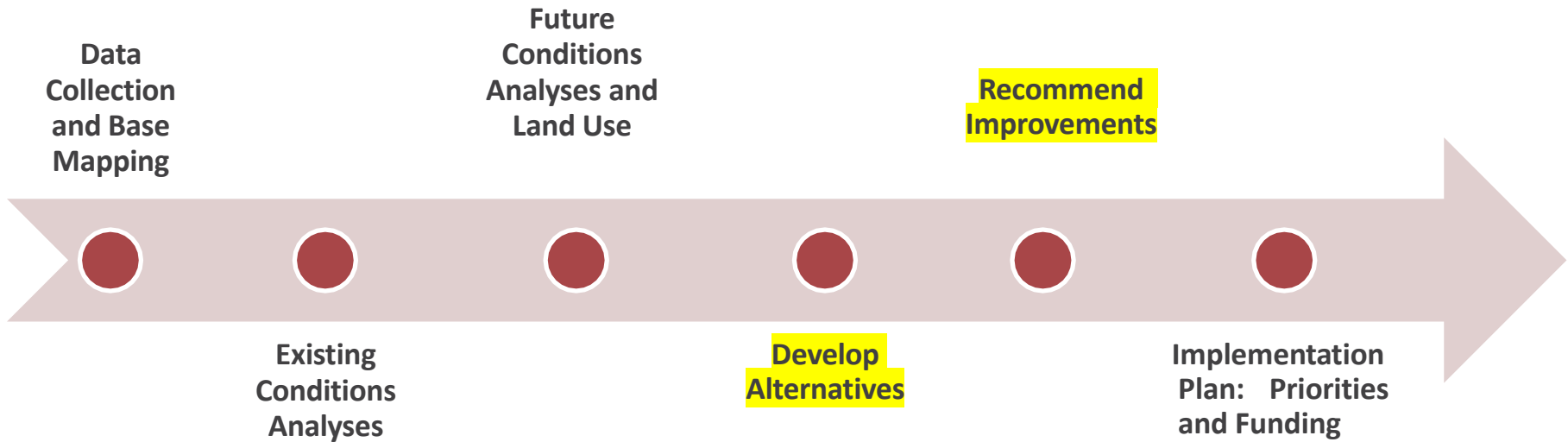
- Establish a **vision** for the corridor
- Evaluate current **transportation** and **land use** conditions and investigate **opportunities** to make improvements
- Develop **recommendations & implementation plan** for transportation aimed to achieve the **vision** for the corridors
- Develop short and long term improvements for funding



# Scope of Work

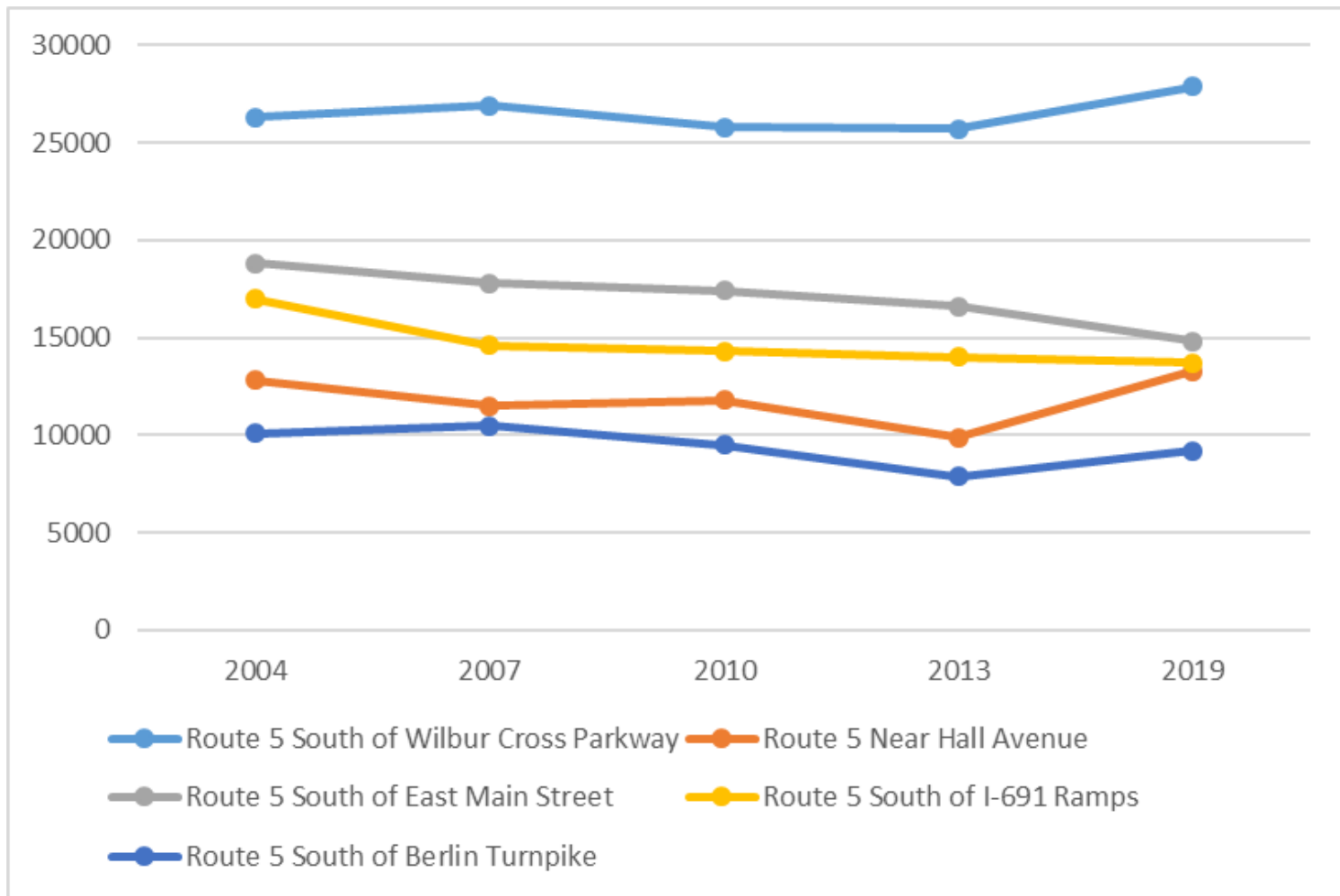
- **Existing Conditions Technical Memorandum**
- Future Conditions Technical Memorandum
- Immediate Improvements Technical Memorandum
- Analysis of Corridor Alternatives Technical Memorandum
- Final Report

# Study Process





# Existing Conditions Traffic Volumes: Pre-Pandemic



# Existing Conditions Traffic Volumes: Pre-Pandemic

**Table 2-1**  
**2019 Existing Weekday Average Daily Traffic Volume Summary**

Location	Weekday ADT <sup>1</sup>	Weekday Morning Peak Hour				Weekday Evening Peak Hour			
		Vehicles Per Hour	Dir. Dist. <sup>2</sup>		"K" <sup>3</sup> Factor	Vehicles Per Hour	Dir. Dist.		"K" Factor
Route 5, south of Wilbur Cross Parkway	27,900	1,609	51%	NB	5.77%	2,242	55%	NB	8.04%
Route 5, near Hall Avenue	13,300	743	56%	SB	5.59%	1,028	56%	NB	7.73%
Route 5, south of East Main Street	14,800	865	60%	NB	5.84%	1,068	61%	NB	7.22%
Route 5, south of I-691 Ramps	13,700	821	52%	SB	5.99%	1,016	54%	SB	7.42%
Route 5, south of Berlin Turnpike	9,200	609	58%	NB	6.62%	739	63%	SB	8.03%

Source: ATR counts conducted by VHB in April 2019.

1 ADT = Average Daily Traffic

2 Directional distribution

3 "K" factor is the percentage of total daily traffic occurring during the peak hour

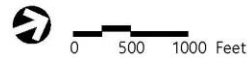
# Existing Conditions - Crashes

Type of Collision	2016	2017	2018	2019	Total Collisions	Percent
Rear End	152	118	134	114	518	48.8%
Angle	80	56	81	70	287	27.0%
Fixed Object	8	9	8	8	33	3.1%
Sideswipe, Same Dir.	48	31	38	42	159	15.0%
Animal	0	2	0	1	3	0.3%
Head On	1	2	2	6	11	1.0%
Sideswipe, Opposite Dir.	6	6	2	2	16	1.5%
Bicycle	0	1	1	0	2	0.2%
Pedestrian	3	2	3	5	13	1.2%
Other	2	1	1	2	6	0.6%
Not Applicable	3	1	2	3	9	0.8%
Unknown	0	1	1	1	3	0.3%
Rear to Side	0	1	0	1	2	0.2%
Total	303	231	273	255	1062	100%



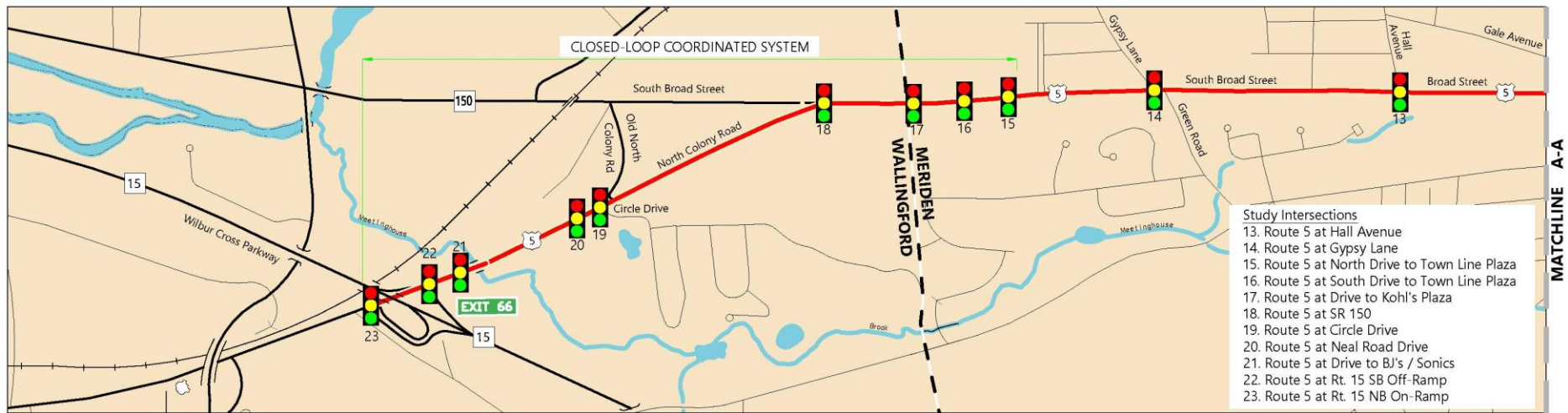
# **LEGEND**

- Study Intersection
- Study Corridor



Study Intersections  
Route 5 Corridor Study  
Meriden and Wallingford, CT

Figure 1-1



# LEGEND

# Intersection Number

Study Corridor

Signalized Intersection\*

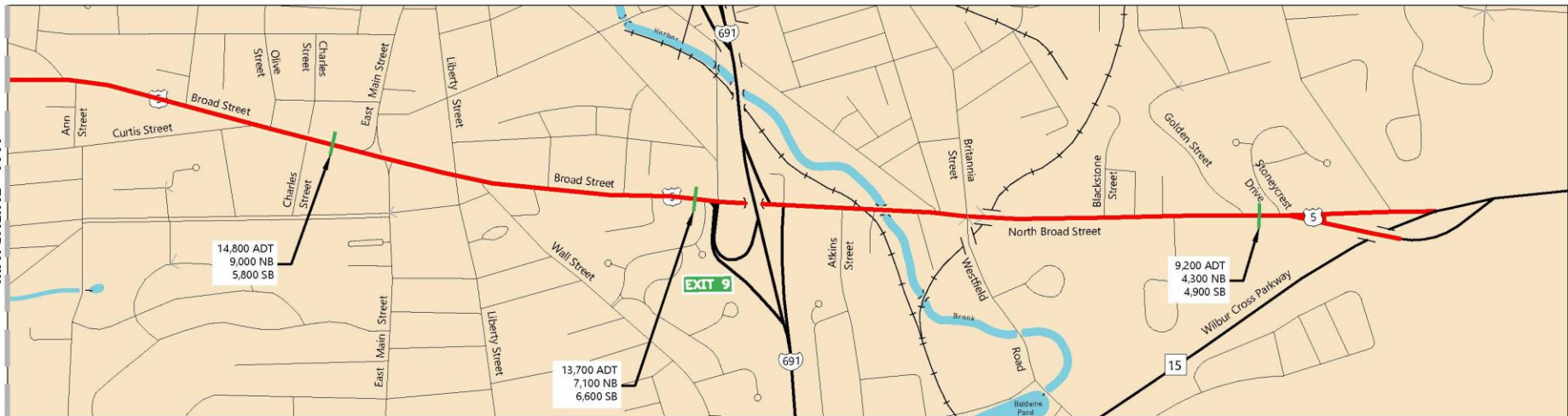
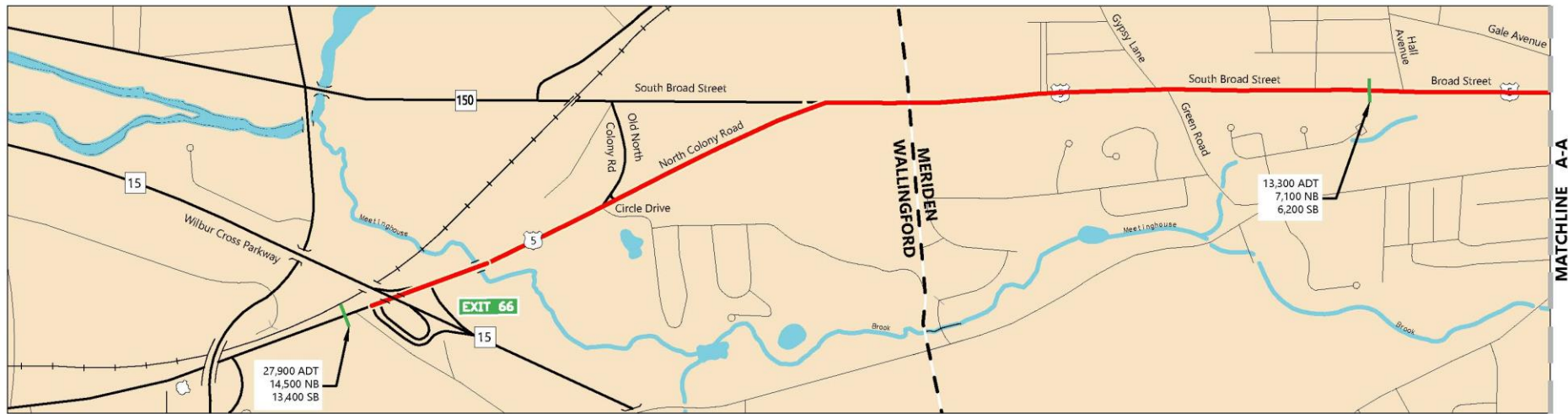
\*All signalized intersections are owned and maintained by the state, except as noted.



Signalized Intersections  
Route 5 Corridor Study  
Meriden and Wallingford, CT

Figure 2-1





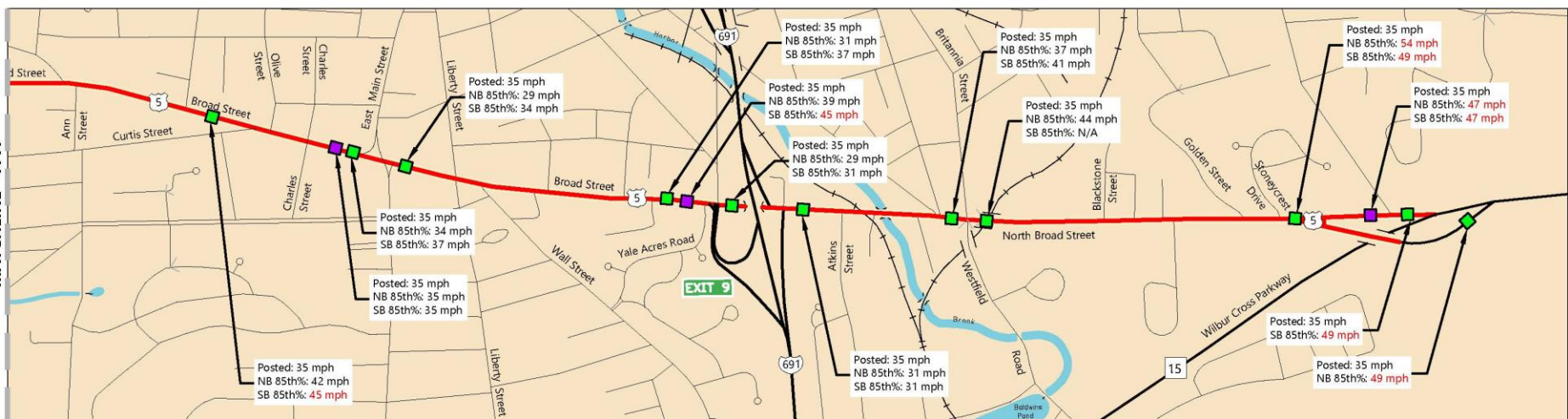
# **LEGEND**

- Automatic Traffic Recorder Count Location
- Study Corridor



2019-Daily Traffic Volumes  
Route 5 Corridor Study  
Meriden and Wallingford, CT

Figure 2-2



### Speed Data Collection Locations

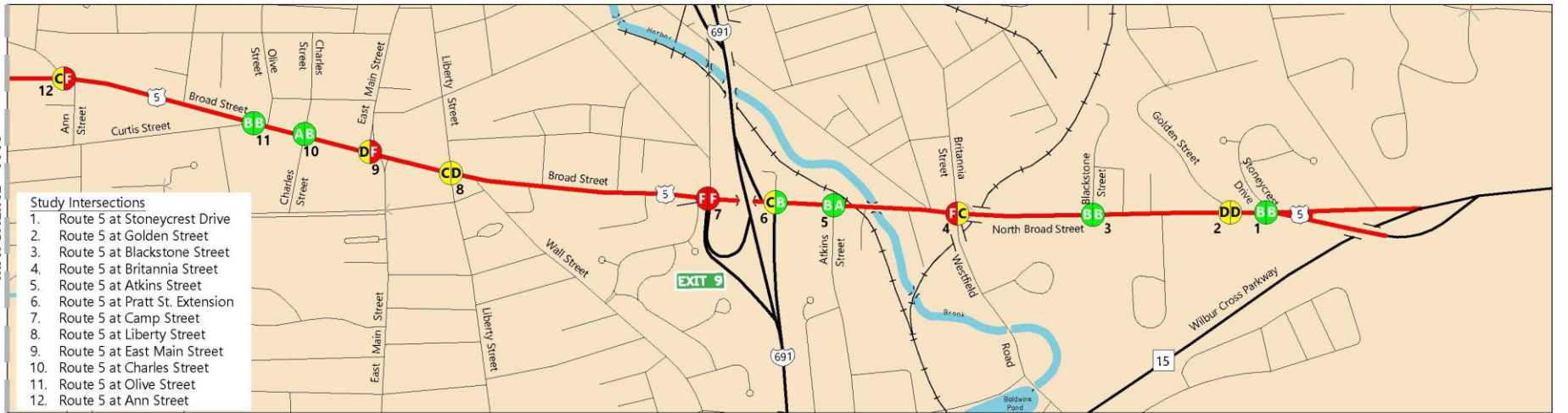
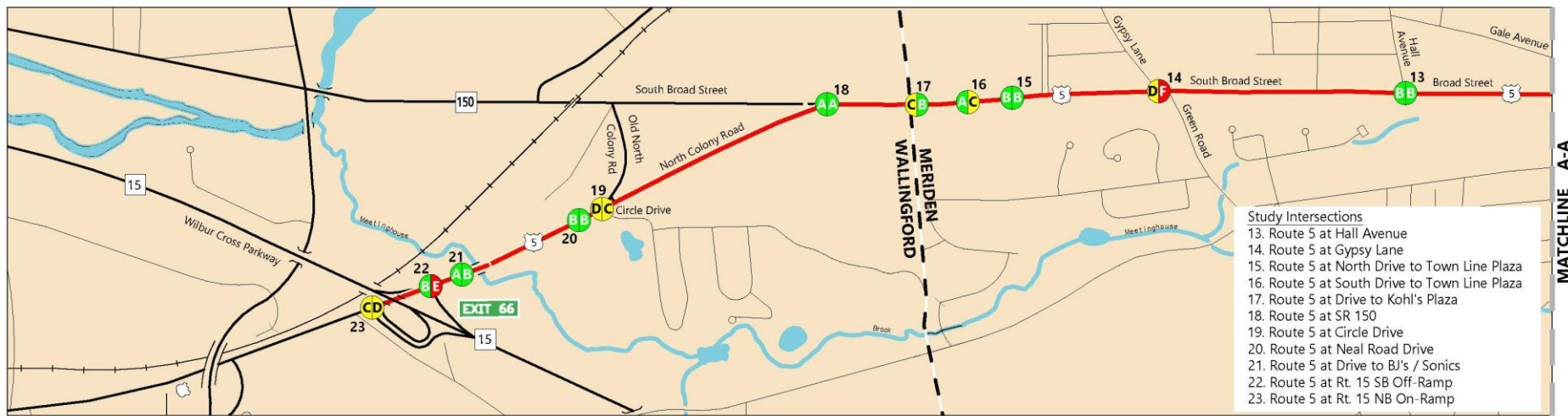
- Speed data collected by CTDOT (2019)
- Speed data collected by VHB (April 2019)
- Study Corridor

**Red Text** 85th percentile speed exceeds posted speed limit by more than 10 mph.



Figure 2-4





# **LEGEND**

# Intersection Number

— Study Corridor

Level of Service (LOS)\*

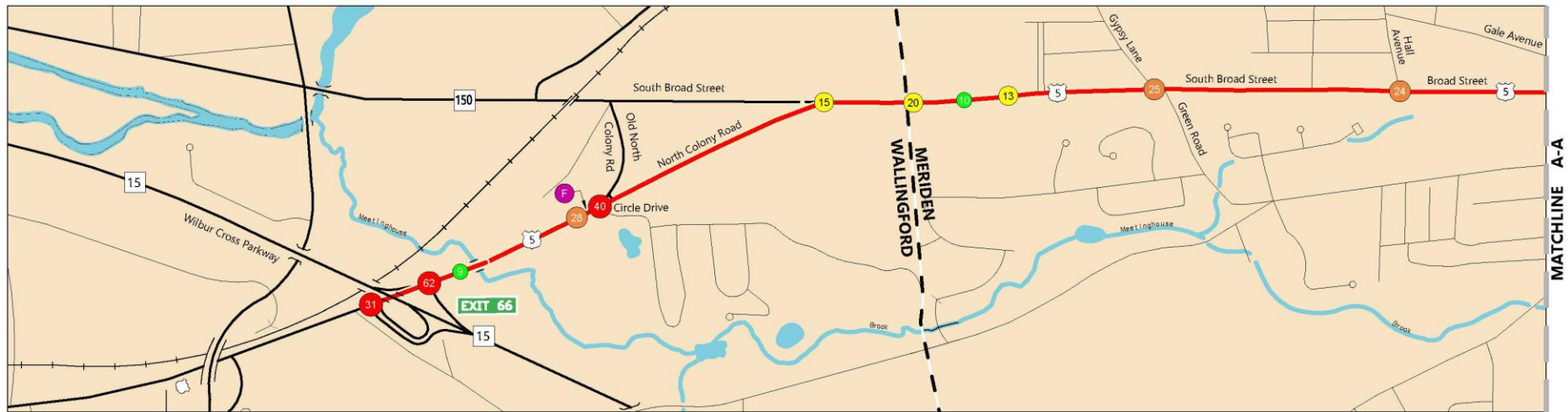
PM Peak Hour  
AM Peak Hour

AB LOS A/B CD LOS C/D EF LOS E/F



Intersection Level of Service  
Route 5 Corridor Study  
Meriden and Wallingford, CT

Figure 2-5



#### LEGEND

##### Number of Crashes Per Intersection

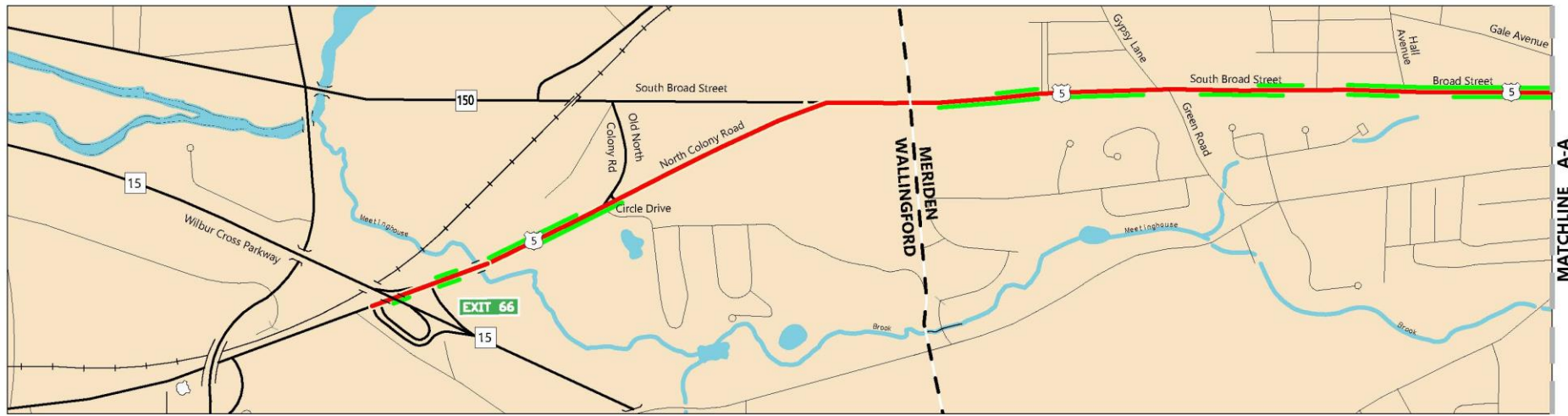
- 0 - 10
- 11 - 20
- 21 - 30
- 31+
- F: Approx. Location of Fatal Collision



Crash History (2016-2018)  
Route 5 Corridor Study  
Meriden and Wallingford, CT

Figure 2-6





# **LEGEND**

Intersection Number

Study Corridor

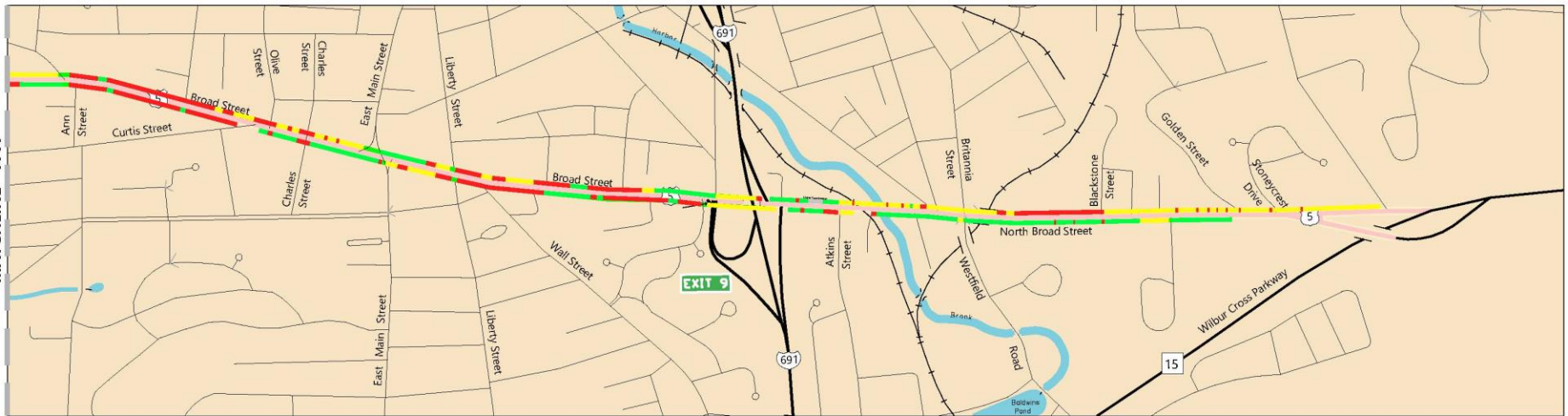
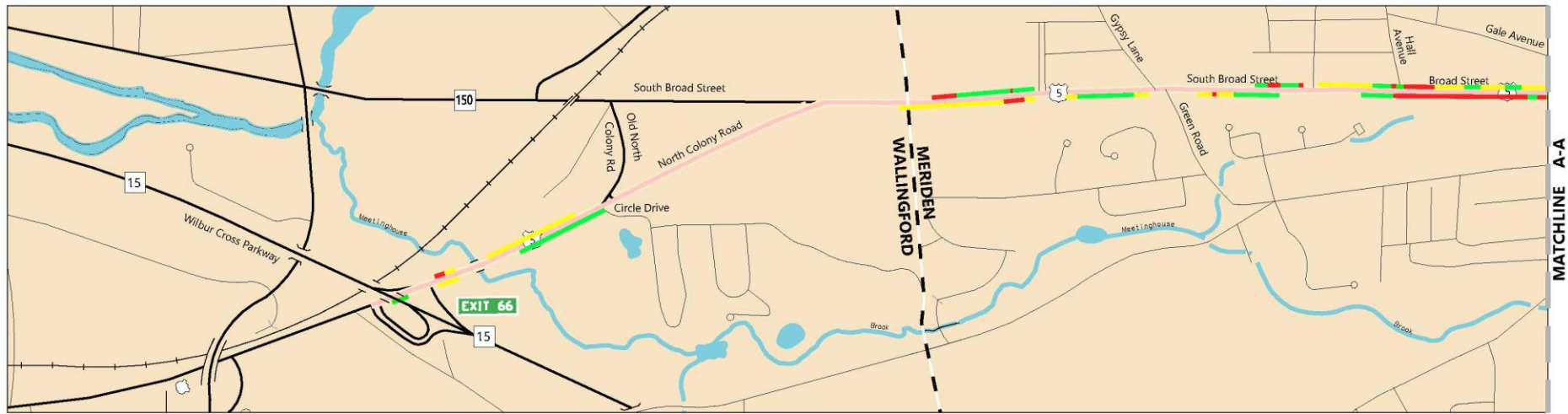
Sidewalks



Pedestrian Facilities  
Route 5 Corridor Study  
Meriden and Wallingford, CT

Figure 2-10





# **LEGEND**

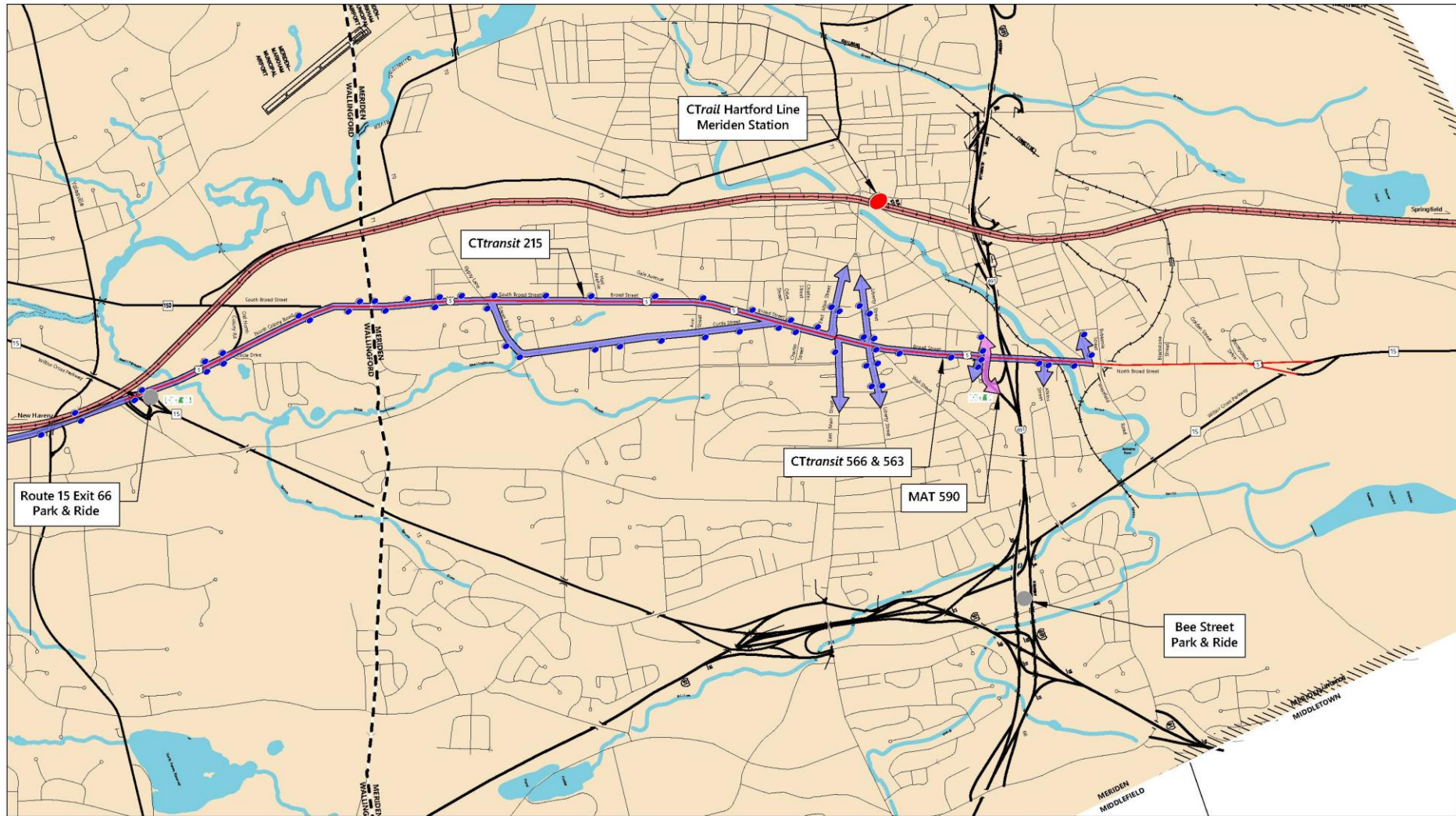
Intersection Number

- Study Corridor
- Sidewalk in Good Condition
- Sidewalk in Fair Condition
- Sidewalk in Poor Condition



Sidewalk Conditions  
Route 5 Corridor Study  
Meriden and Wallingford, CT

Figure 2-11



#### LEGEND

CTrail Hartford Line  
CTtransit Bus Route  
MAT Bus Route

Station  
Stop  
Park & Ride

Study Corridor



0 1000 2000 Feet



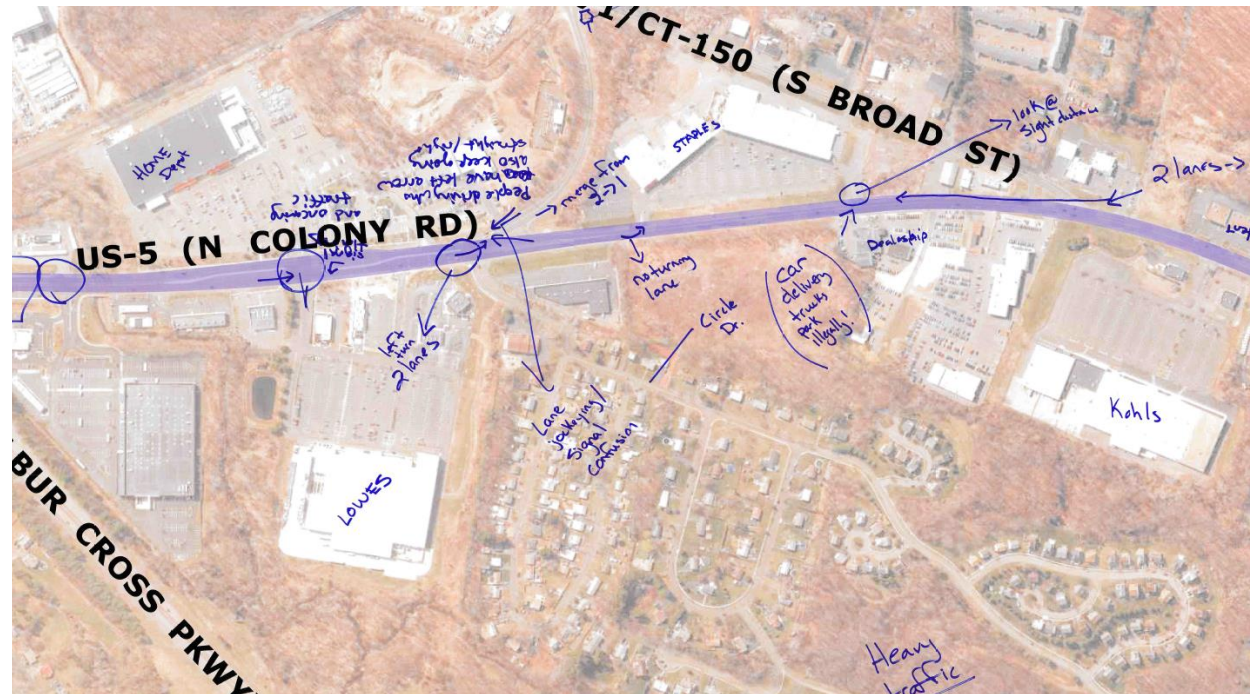
Transit Map  
Route 5 Corridor Study  
Meriden and Wallingford, CT

Figure 2-12



# Public Information Meeting 1 – November 2019

- Three Sections of Route 5 Corridor Reviewed for Existing Conditions
- Comments Provided by Public
  - Speed Concerns
  - Congestion Noted as Critical Intersections
  - Specific Improvements Suggested for Various Intersections Throughout Corridor



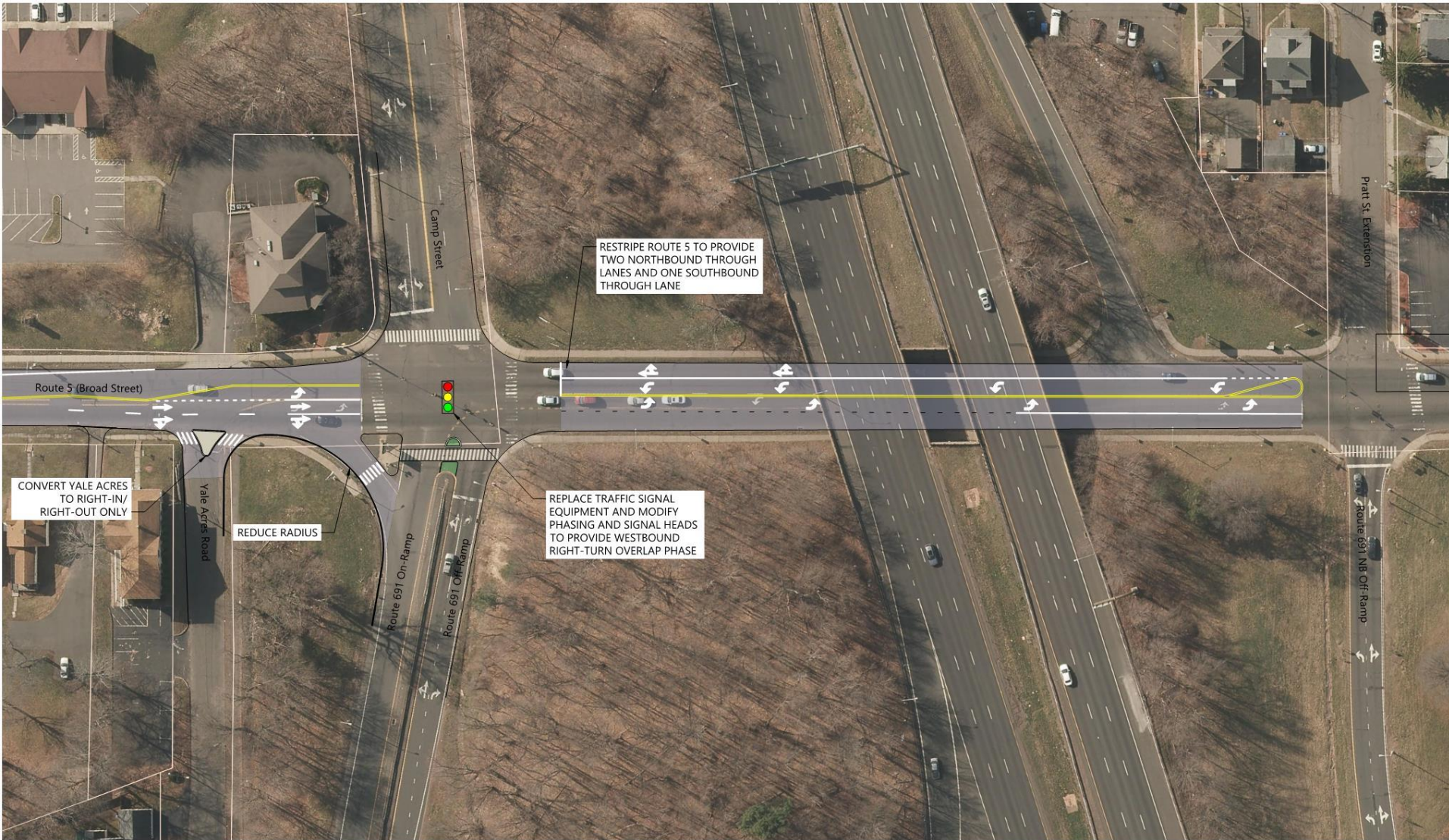
# Concept Improvement Alternatives

- Existing Conditions – 2020 (Pre-Pandemic)
- 20 Year Design Horizon - 2040
- 2040 No Build – No Improvements
- 2040 Build – With Improvements
- Critical Intersections
- Transit and Pedestrian Connectivity



# Concept Improvement Intersections

- Wilbur Cross Parkway (Route 15) Ramps
- Circle Drive/Route 150 (South Junction)
- Curtis Road
- Gypsy Lane
- East Main Street
- Liberty Street
- Camp Street/Yale Acres
- Corridor-Wide Curb Cuts
- Corridor-Wide Pedestrian Connectivity



Route 5 Corridor Traffic Study  
Meriden, CT

0 30 60 Feet

Short-Term Improvement Concept Plan #1  
Route 5 (Broad Street) at Camp Street and I-691 Ramps  
June 2020







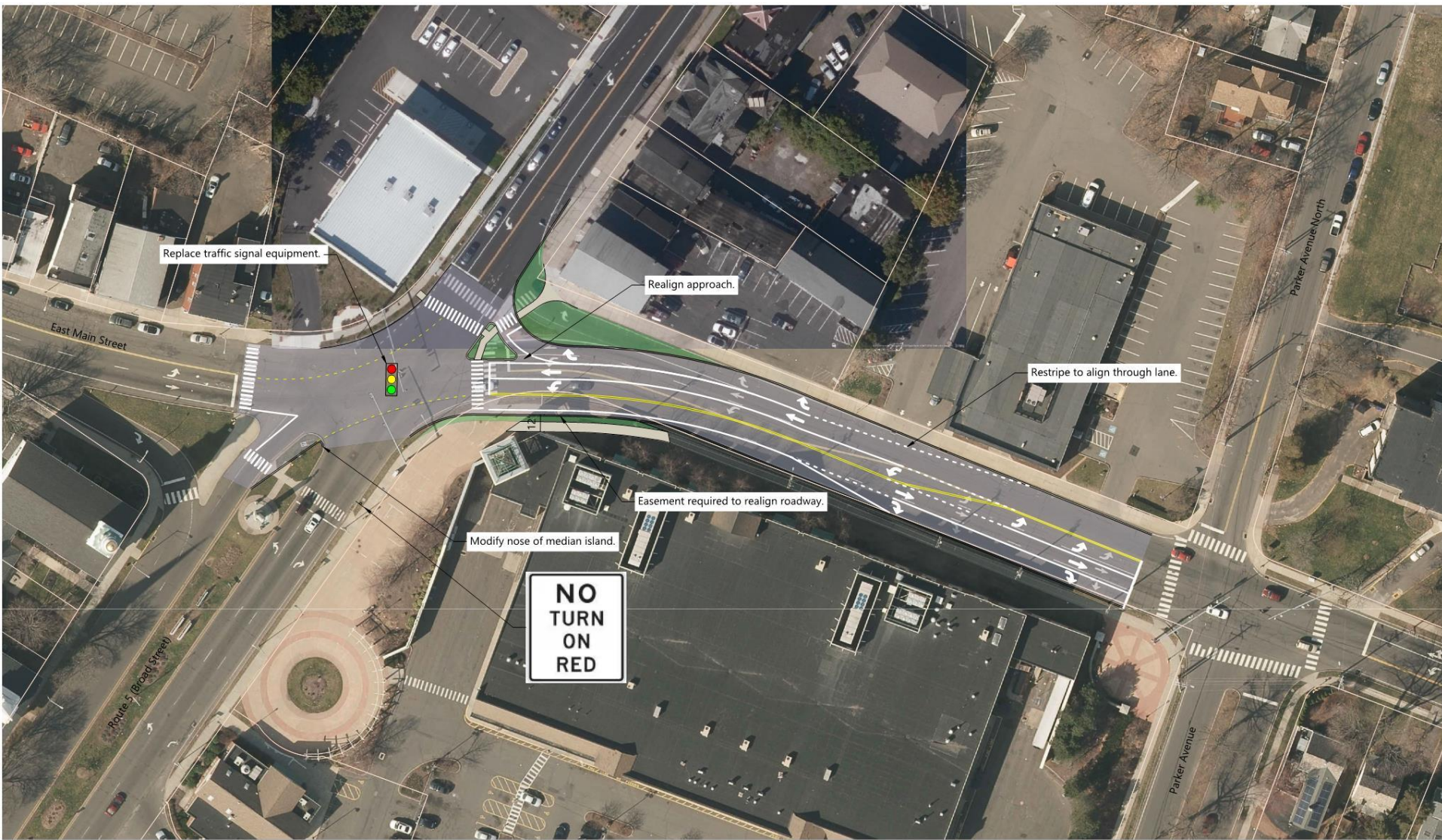
Route 5 Corridor Traffic Study  
Meriden, CT

0 20 40 Feet

Long-Term Improvement Concept Plan  
Route 5 (Broad Street) at Liberty Street  
June 2020







Replace traffic signal equipment.

Realign approach.

Restripe to align through lane.

Easement required to realign roadway.

Modify nose of median island.

NO  
TURN  
ON  
RED



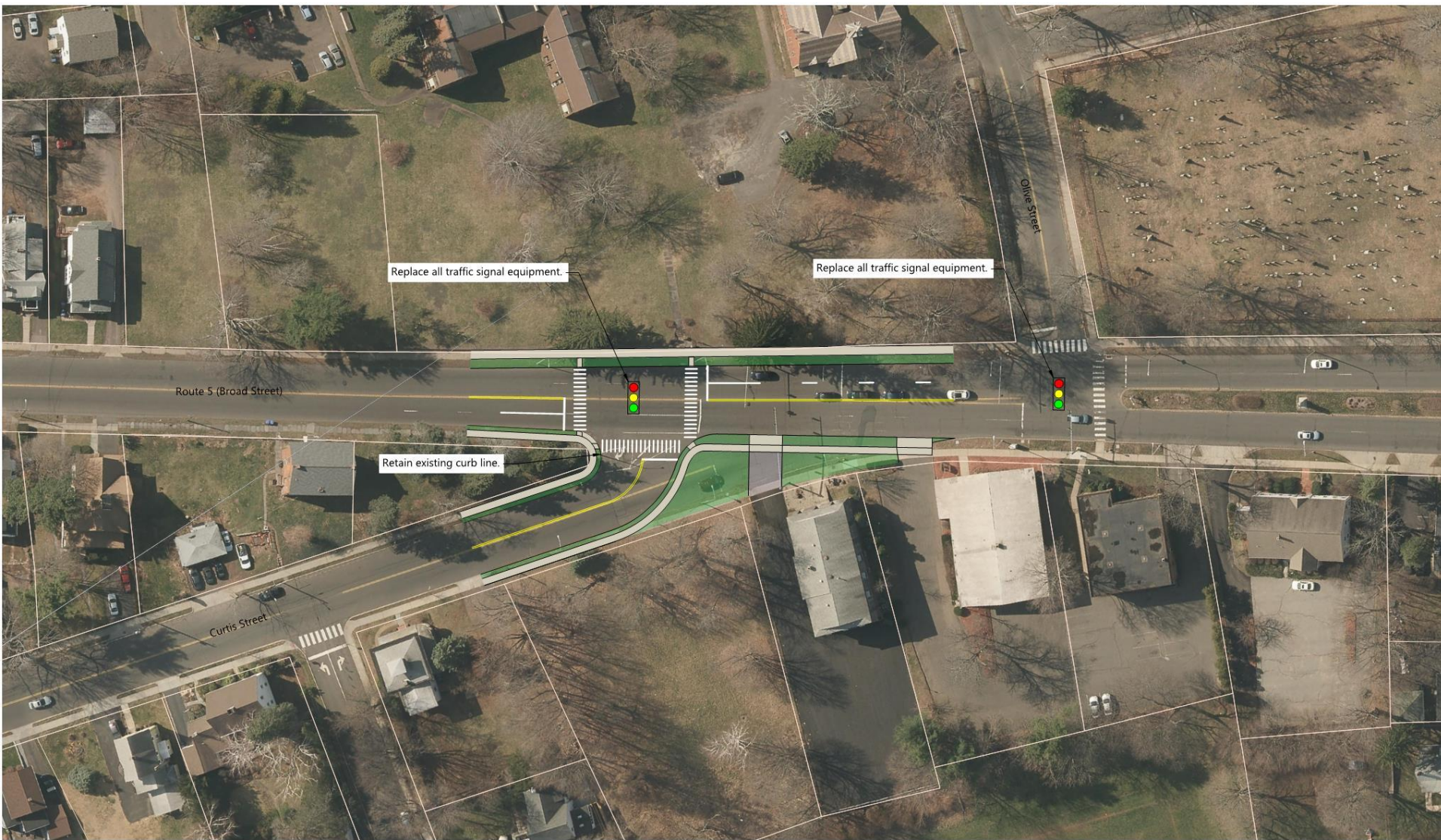
Route 5 Corridor Traffic Study  
Meriden, CT

0 30 60 Feet

Short-Term Improvement Concept Plan  
Route 5 (Broad Street) at East Main Street  
June 2020







Route 5 Corridor Traffic Study  
Meriden, CT

0 30 60 Feet

Alternate 1  
Concept Plan  
Route 5 (Broad Street) at Curtis and Olive Street  
June 2020







Route 5 Corridor Traffic Study  
Meriden, CT

0 30 60 Feet

Alternate 2  
Concept Plan  
Route 5 (Broad Street) at Curtis and Olive Street  
June 2020







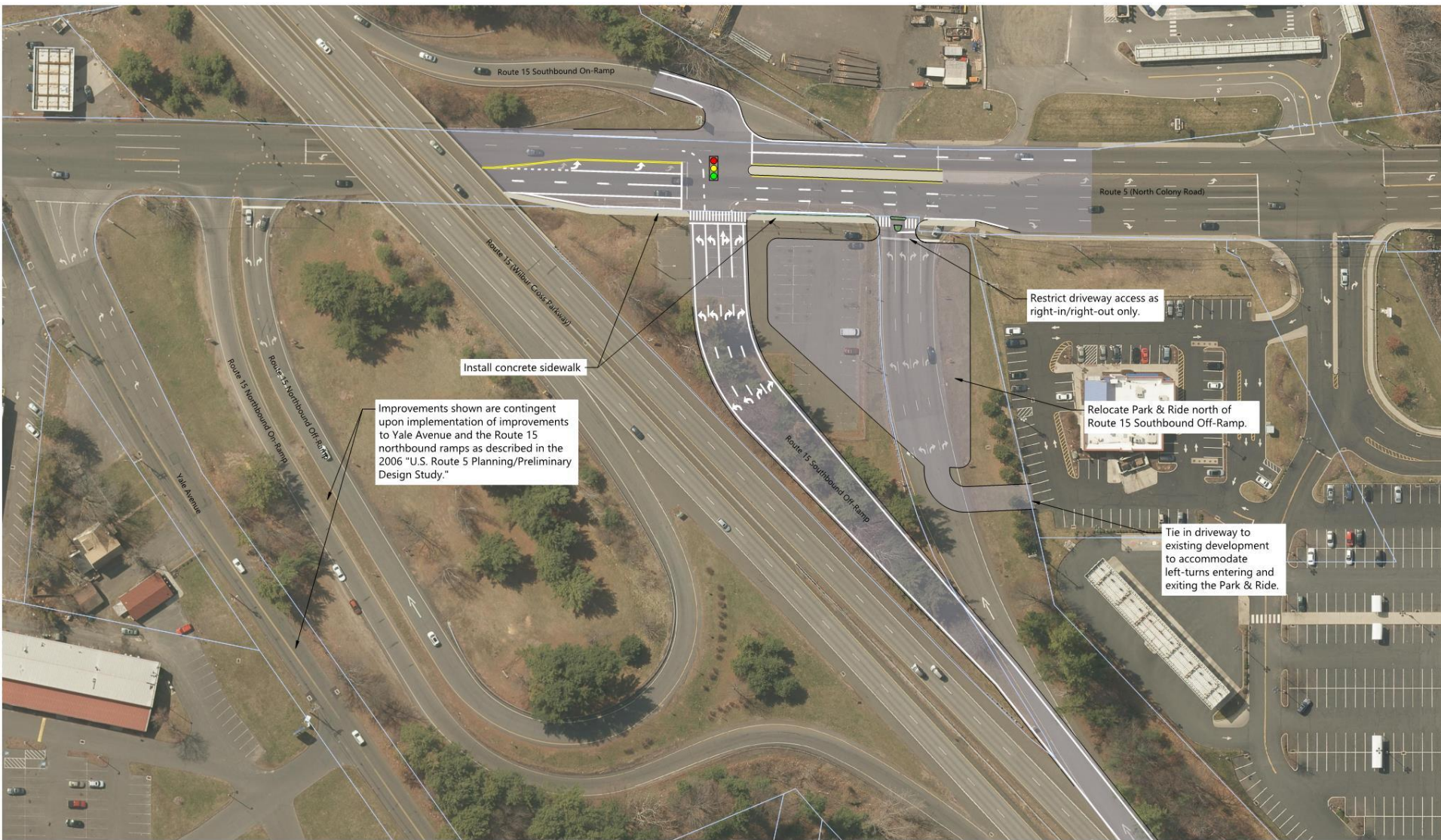
Route 5 Corridor Traffic Study  
Meriden, CT

0 15 30 Feet

Short Term Improvement Concept Plan #1  
Broad Street at Gale Avenue & Ann Street  
June 2020







Route 5 Corridor Traffic Study  
Wallingford, CT

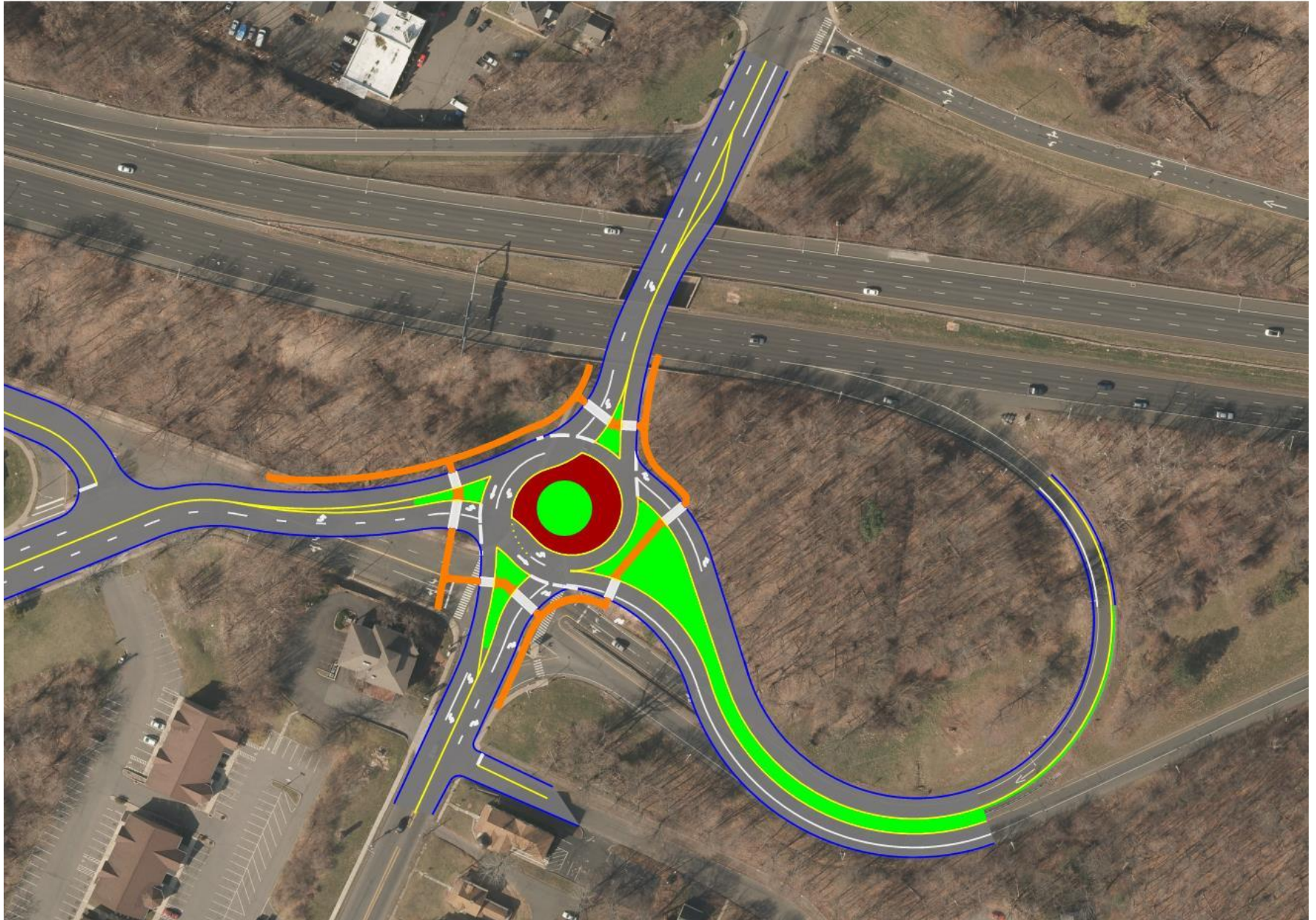
0 40 80 Feet

Concept Plan #2: Long-Term Improvement  
Route 5 at Route 15 Southbound Off-Ramp and Park & Ride  
June 2020



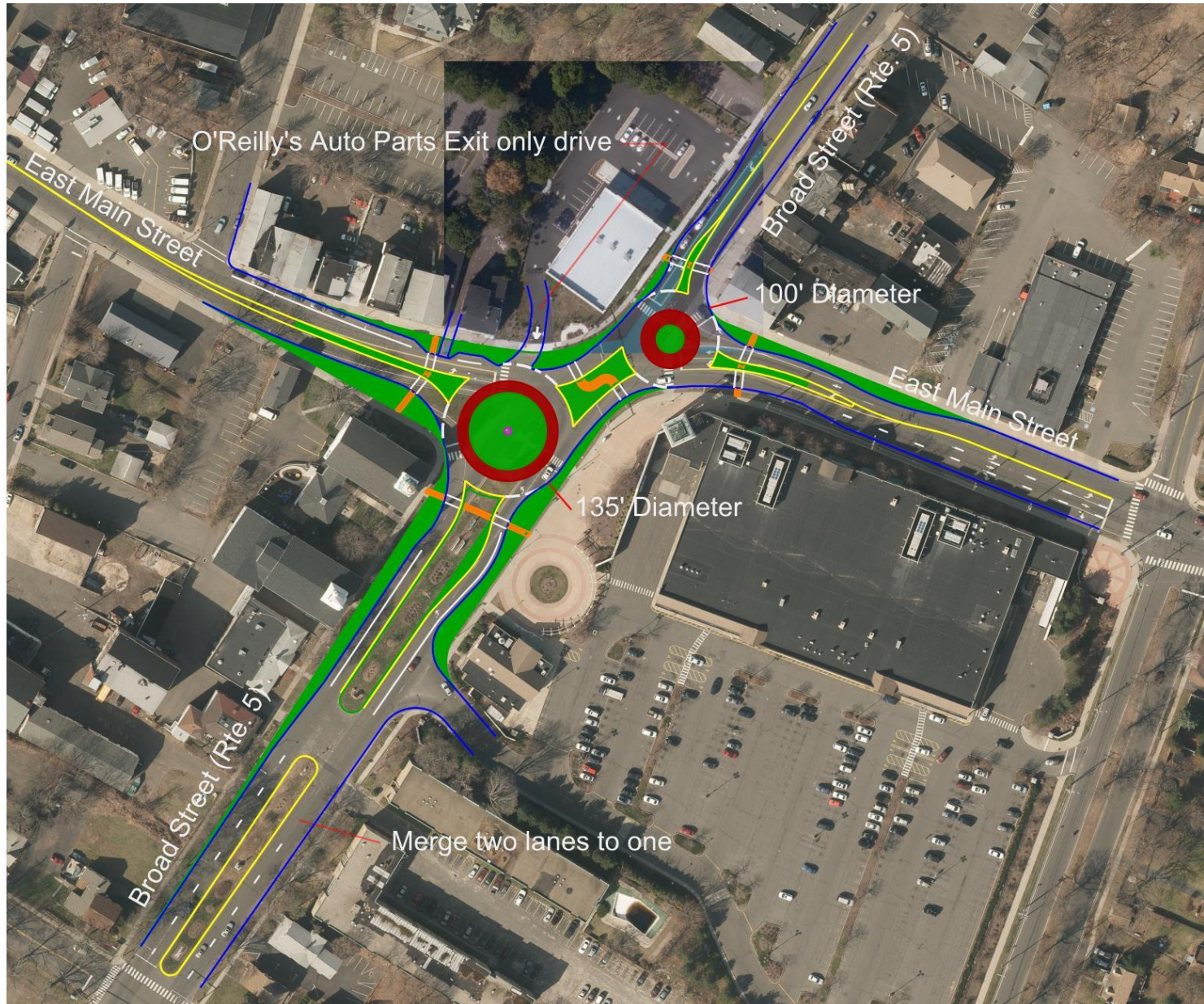


# Long Term Alternatives - Roundabouts





# Long Term Alternatives - Roundabouts



# Operations Summary – North End

Capacity Analysis Summary	2020 Existing Conditions		2040 No-Build Conditions		2040 Build Conditions	
	AM	PM	AM	PM	AM	PM
Intersection						
1) Route 5 at Stoneycrest Drive	B	B	B	C	B	C
2) Route 5 at Golden St. & Edison Middle School	D	D	E	D	E	E
3) Route 5 at Blackstone Street	B	B	B	C	C	B
4) Route 5 at Britannia Street & Westfield Road	F	F	F	F	C	D
5) Route 5 at Atkins Street	B	A	C	E	C	D
6) Route 5 at I-691 WB Off-ramp and Pratt Street Extension	C	B	C	D	C	C
7) Route 5 at Camp Street & I-691 Ramp (EB)	F	F	F	F	D	E
8) Route 5 at Liberty Street	C	D	C	F	D	F

# Operations Summary – Middle

Capacity Analysis Summary	2020 Existing Conditions		2040 No-Build Conditions		2040 Build Conditions	
	AM	PM	AM	PM	AM	PM
Intersection						
9) Route 5 at East Main Street	D	F	E	F	D	E
10) Route 5 at Charles Street	A	B	A	B	A	B
11) Route 5 at Olive Street	B	B	B	B	A	B
12) Route 5 at Gale Avenue & Ann Street	C	F	D	F	D	F
13) Route 5 at Hall Avenue	B	B	B	C	B	C
14) Route 5 at Gypsy Lane & Green Road	C	D	C	F	C	F
15) Route 5 at Silver Hill North Dr. & North Dr. to Townline Square	B	B	B	B	A	B
16) Route 5 at Silver Hill South Drive & South Drive to Townline Square	A	C	A	C	A	C



# Operations Summary – South

Capacity Analysis Summary	2020 Existing Conditions		2040 No-Build Conditions		2040 Build Conditions	
	AM	PM	AM	PM	AM	PM
17 ) Route 5 at Driveway to Kohl's Plaza	C	B	B	B	B	B
18 ) Route 5 at Route 150	A	A	A	A	A	A
19 ) Route 5 at Route 71 and Circle Drive	D	C	E	C	C	C
20 ) Route 5 at Home Depot Dr. and Neal Road	B	B	B	C	B	B
21 ) Route 5 at Sonic Dr. and BJ's Driveway	A	B	A	B	A	B
22 ) Route 5 at Route 15 SB Off-Ramp	B	C	A	E	B	D
23 ) Route 5 at Route 15 (NB) Ramp	C	D	C	F	B	F

# Comments

During This Meeting, Or To:

Stephen Dudley

Deputy Director/Director of Transportation

SCRCOG

Washington Avenue, 4<sup>th</sup> Floor West

North Haven, CT 06473

203-234-7555

[Sdudley@scrcog.org](mailto:Sdudley@scrcog.org)



# Next Steps

- Finalize Improvement Concepts
- Finalize Report
- Issue Report for Future Funding