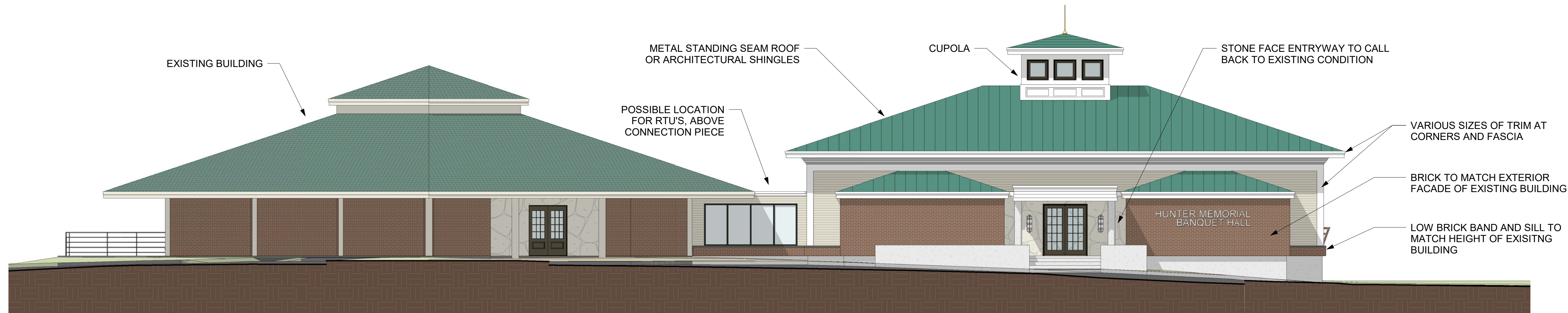
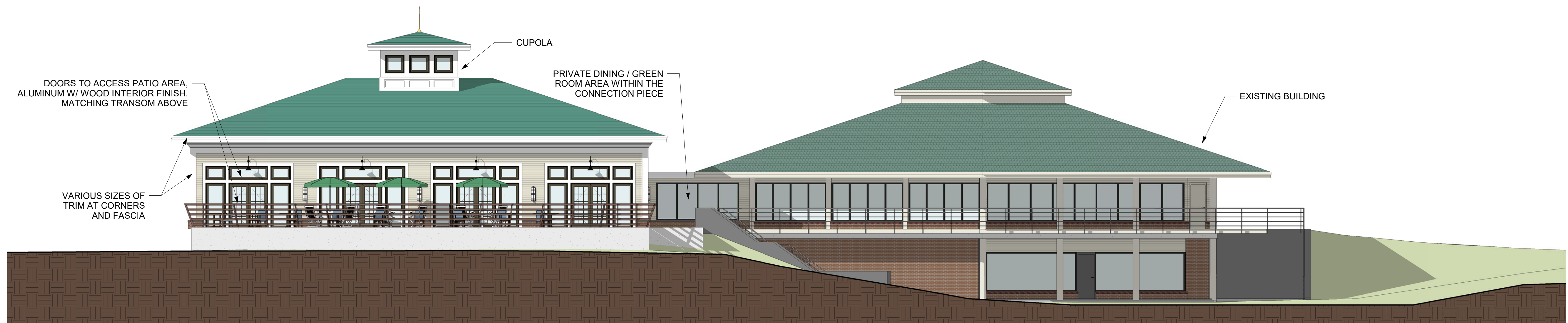


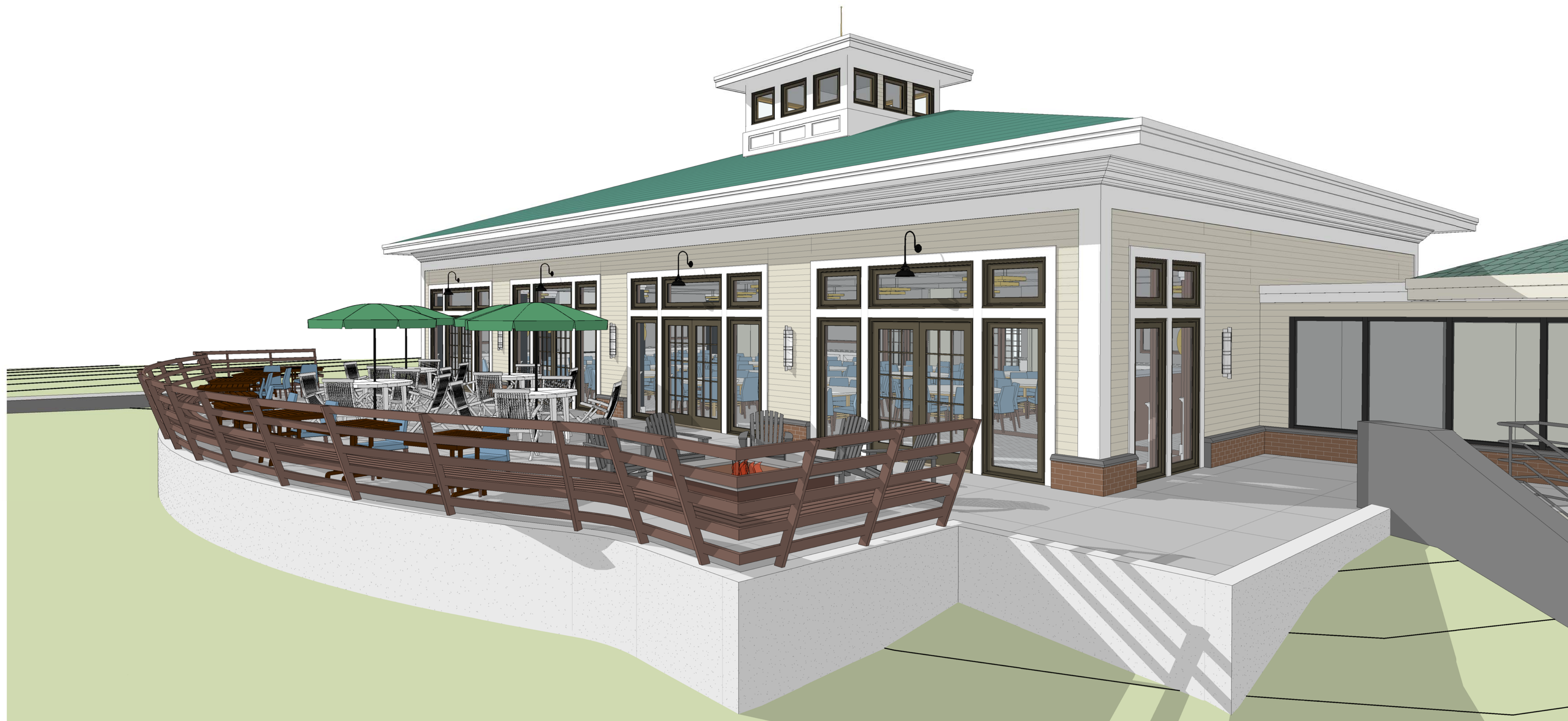
3 RIGHT
PR1.2 1/8" = 1'-0"



2 FRONT
PR1.2 1/8" = 1'-0"



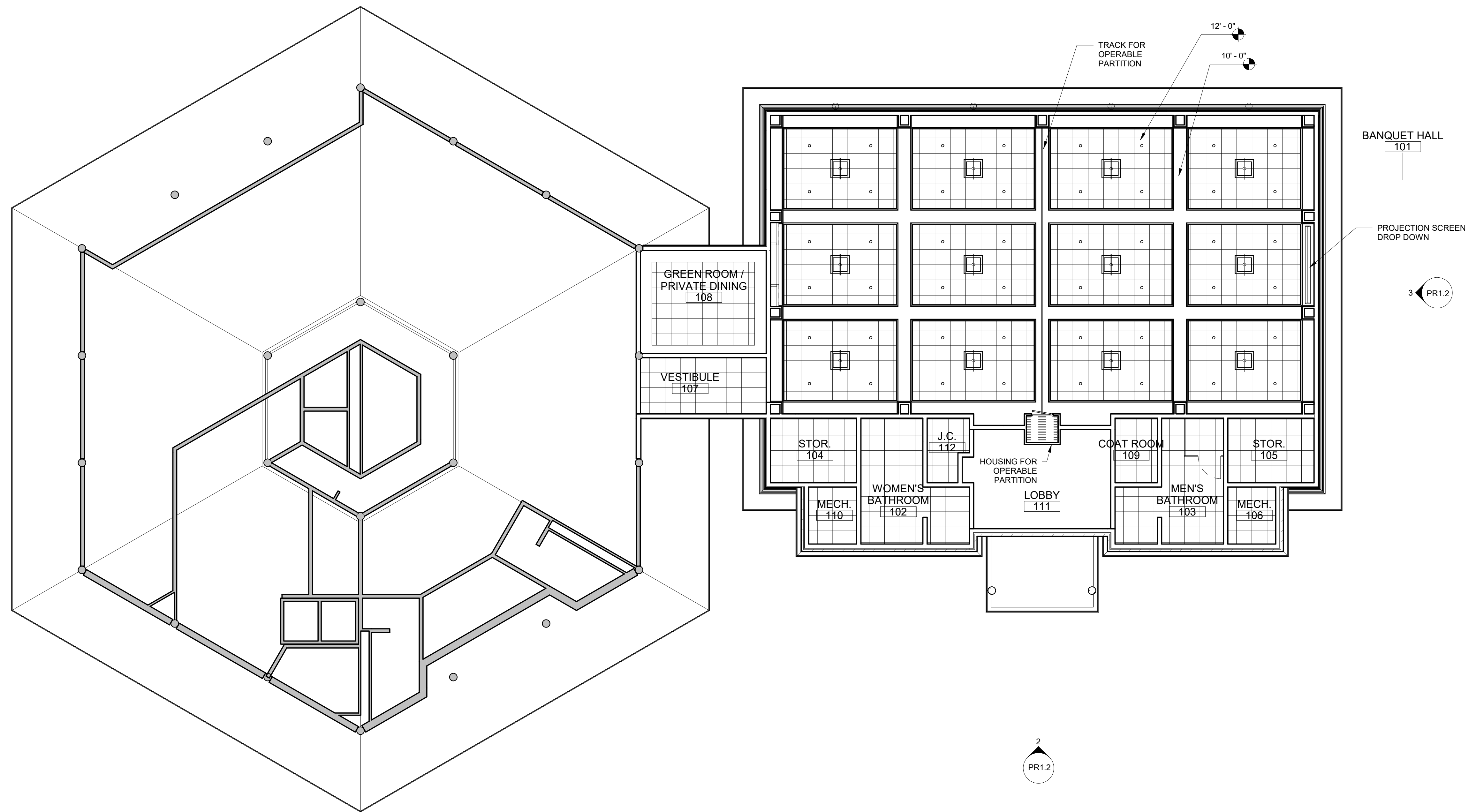
1 BACK
PR1.2 1/8" = 1'-0"



2
PR1.3 PERSPECTIVE OF BACK FACADE



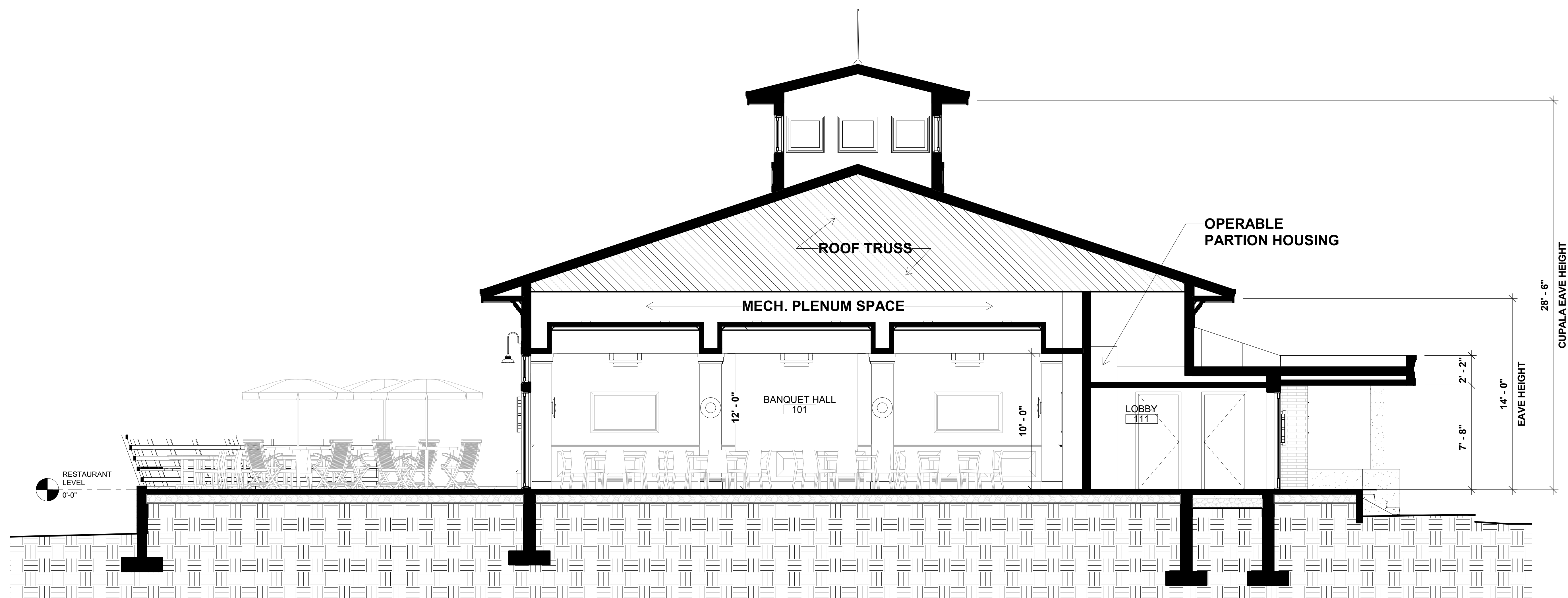
1
PR1.3 PERSPECTIVE OF ENTRY



1 1 - LEVEL 1
PR1.4 1/8" = 1'-0"

REFLECTED CEILING PLAN

PRESENTATION 11/06/2019



1 **BUILDING CROSS SECTION**
 PR1.5/ 1/4" = 1'-0"



