



City of Meriden, Connecticut

Purchasing Department

Invitation to Bid

For

Sidewalk Spot Repairs

Meriden, CT

B022-36

Proposals Due: April 13, 2022 @ 11:00 AM

Purchasing Department

142 East Main Street, Room 210

Meriden, CT 06450

(203) 630-4115

LEGAL NOTICE

INVITATION TO BID

The City of Meriden is accepting sealed bids for:

B022-36 – Sidewalk Spot Repairs

The City of Meriden seeks the services of a an On-Call Contractor to complete spot repairs to concrete sidewalks, curbs, pedestrian ramps, and driveway ramps on an as-needed basis. Small areas of damage caused by tree roots, snow plows, or other causes will be repaired under this contract, as well as sidewalk replacements under the CIDEWALK Program. Contractor will be paid based on the quantity of work completed and accepted by the City at the unit prices agreed to in the bid. Every effort will be made by the City to ensure that the minimum concrete load of 3 cubic yards is used at each location. All work will be completed in compliance with City of Meriden Specifications.

The winning contractor will be expected to mobilize to the areas designated by the Engineer within 30 days of notification. This will be a one (1) year contract with optional extensions upon mutual agreement.

Bids shall be submitted on forms and in the manner specified. Forms and specifications may be obtained from the Purchasing Department, on the City of Meriden website (www.meridenct.gov/business/bids-rfps/), and on the State of Connecticut Department of Administrative Services website (<https://portal.ct.gov/DAS/CTSource>). Bids will be accepted at the Purchasing Department, 142 East Main Street, Room 210, Meriden, Connecticut 06450 until **11:00 A.M. local, Eastern Standard Time on April 13, 2022** at which time they will be publicly opened and read. Any bid received after the time and date specified shall not be considered.

The right is reserved to reject any or all bids, in whole or in part, to award any item, group of items, or total bid, and to waive informality or technical defects, if it is deemed to be in the best interest of the City of Meriden. No bidder may withdraw its bid within sixty (60) days of the date of the bid opening.

The City of Meriden is an Affirmative Action/Equal Opportunity Employer. Disadvantaged, minority, small, and women business enterprises are encouraged to respond.

Adam B. Tulin
Purchasing Officer
City of Meriden, CT 06450-8022
Dated: March 18, 2022

CITY OF MERIDEN, CONNECTICUT

B022-36 – Sidewalk Spot Repairs

INFORMATION TO BIDDERS

1. BIDDING PROCEDURES

Sealed Bids shall be submitted on the forms designated by the attached proposal bid forms. Bids will be received by the City of Meriden’s Purchasing Department, Room 210, City Hall, 142 East Main Street, Meriden, Connecticut, 06450-8022 until 11:00 a.m. on April 13, 2022 and thereafter immediately read in public (the “bid opening”).

2. BIDS

Bids are to be submitted on the attached proposal forms. Please submit two copies of the proposal forms and Bidder’s Qualification Statement. One shall be an original and one can be a copy. **Please submit one complete copy of your bid on a flash drive.**

BID WILL BE AUTOMATICALLY REJECTED FOR ANYONE SUBMITTING A SURETY OTHER THAN THOSE SPECIFIED.

- a. Bids must be made out and signed in the corporate, or other, name of Bidder, and must be fully and properly executed by an authorized person.
- b. The sealed envelope must denote the Bidder’s name and address in the upper left hand corner and the words “BID DOCUMENT – B022-36 – Sidewalk Spot Repairs to be opened at 11:00 a.m.” in the lower left hand corner.
- c. Bids received later than the time and date specified will not be considered.
- d. Amendments to or withdrawal of bids received later than the date and time set forth in the bid opening will not be considered.
- e. All prices must be in ink or typewritten. In the event of a bidder’s mathematical error in tabulating any bid prices, ***the written unit prices shall govern.***

3. BIDDER QUALIFICATIONS

Bidders will be required to fill out, and include as part of its bid, any attached Bidder’s Qualification Statement.

In determining the qualifications of a bidder, the City of Meriden will consider the bidder’s record of performance in any prior contracts for construction work. The City of Meriden expressly reserves the right to reject a bid if the bidder’s historical performance, in the sole opinion of the City of Meriden, has been unsatisfactory in any manner or if the bidder has habitually and without just cause neglected the payment of bills or has otherwise disregarded its obligations to subcontractors, suppliers, or employees.

4. EXAMINATION OF BIDDING DOCUMENTS

Bidders are to examine all documents and visit the site in order to make a thorough examination of the conditions so that the bidder may familiarize itself with all of the existing requirements, conditions, and difficulties that will affect the execution of the work in order to determine the amount of work necessary to carry out the true intent of the specifications and work shown on the drawings.

The City of Meriden and its agents do not have any responsibility for the accuracy, completeness, or sufficiency of any bid document obtained from any other source other than from the City of Meriden. Obtaining documents from any other source(s) may result in obtaining incomplete and inaccurate information. Obtaining documents from any other source may also result in failure to receive any addenda, corrections, or other revisions to the documents that may be issued.

No request shall be honored if such request is made less than seven (7) calendar days prior to the date fixed for the opening of bids. Any and all such interpretations, and any supplementary instructions, will be in the form of a written addenda to the specifications which, if issued, will be made available on the City of Meriden website (www.meridenct.gov) unless it is to change the date fixed for the opening of bids, not later than three (3) days prior to the date fixed for the opening of bids. Bidders are encouraged to check the website regularly for addenda. Failure of any bidder to receive any such addenda shall not relieve any bidder from any obligations under its bid as submitted.

Any questions about the bid document must be submitted in writing via email to meridenpurchasing@meridenct.gov. Any other format of question will not be answered.

5. BIDS TO REMAIN OPEN

No bidder may withdraw its bid within sixty (60) days of the date of the bid opening. Should there be reason why the contract cannot be awarded within the specified period, the time may be extended by mutual agreement between the City of Meriden and the successful bidder.

6. AWARD OF CONTRACT

The Purchasing Officer reserves the right to make an award on the bid which, by the Purchasing Officer's judgment and recommendation from the Department of Public Works following bid evaluations, best meets the specifications and is deemed to be in the best interest of the City of Meriden.

The contract will not be awarded to any corporation, firm, or individual which/who is in arrears to the City of Meriden by debt or contract, or who is in default as security or otherwise by any obligation to the City of Meriden.

The right is reserved to reject any or all bids, in whole or in part, to award any item, group of items, or total bid, and to waive informality or technical defects, if it is deemed to be in the best interest of the City of Meriden.

7. BID PROTEST PROCEDURE

In the event that any bidder wishes to protest the potential award of a bid, or any procedure of act in the advertising or soliciting of the bids, said bidder must make said protest in writing, which shall state the reason therefore and request a conference with respect thereto. Said protest must be received in the City Purchasing Office within **FIVE (5)** business days after the delivery of bid results or decisions. A conference with respect to said protest shall be scheduled by the Purchasing Officer forthwith and shall be attended by him or his designee and such other persons as the Purchasing Officer and the City Manager shall require to attend. The subject matter of said conference shall be limited to the reasons for the protest specified in the written request for said conference. Said conference shall also include a discussion of all possibilities for a resolution of dispute. The City shall make a decision in writing within three (3) business days after said conference and forward the same to the protesting bidder forthwith. In the event that any protesting bidder wishes to take legal action against the City, they must fully comply with all of these instructions to bidders.

8. CITY OF MERIDEN, LOCAL PREFERENCE

In determining the lowest responsible bidder, the Purchasing Department shall also consider Local Preference.

This section shall not apply in those instances where the bid requested involves a cooperative purchasing arrangement between the City of Meriden and other municipalities or the State of Connecticut.

Bidders are specifically advised that the City of Meriden has adopted Section 3-14 of the Code of the City of Meriden which requires, but is not limited to, a local preference requiring, in part, that a “City-based business” shall mean a business with its principal place of business located within the boundaries of the City of Meriden. A business shall not be considered a “City-based business” unless evidence has been submitted, satisfactory to the Purchasing Department, with each bid (forms included in bidding documents) to establish that the bidder has a bona fide principal place of business, operates out of, or pays property taxes on personal property in the City of Meriden.

Any City-based business bidder which has submitted a bid not more than ten (10) percent higher than the low bid provided such City-based business bidder agrees to accept the award of the bid at the amount of the low bid. The acceptance shall be submitted in writing to the Purchasing Department no later than next business day following the opening of the bid. For example, a bid opened at 11:00 a.m. on a Monday must be accepted by the City-based bidder no later than 11:00 a.m. on Tuesday. If more than one City-based business bidder has submitted bids not more than ten (10) percent higher than the low bid and has agreed to

accept the award of the bid at the amount of the low bid, the lowest responsible bidder shall be one of the City-based business bidders which has submitted the lowest bid.

Bidders claiming status under the local preference are hereby required to submit with its bid an additional form, titled "Request for Status as a Meriden Based Business."

9. EXTENSION OF AGREEMENT

Thirty (30) days prior to the expiration of the resulting contract, the parties may, by mutual agreement, extend the contract for up to two (2) years. Any extension must be in writing, executed by both parties.

10. TIME

Inasmuch as the contract concerns a public improvement, the provisions of the contract relating to the time of performance and completion of the work are of the essence of the contract. Accordingly, the successful bidder/contractor ("Contractor") shall begin work on the day specified in paragraph 2.04 of the General Conditions and shall perform the work diligently so as to permit full use not later than the first day following the construction period established in the Contract. See paragraph 10 entitled "Liquidated Damages" of the Agreement between City of Meriden, as owner, and the Contractor.

11. SCHEDULE OF WORK

The Contractor shall schedule all work in a manner that will not disrupt City of Meriden operations. Once the work has begun, the Contractor shall work full-time until completion of the Contract.

12. TAXES

The City of Meriden is exempt under Connecticut General Statutes from the payment of the excise taxes imposed by the federal government and the Sales and Use Tax of the State of Connecticut; such taxes should not be included in the bid price. Upon request, exemption certificates will be furnished to the successful bidder.

13. FAIR EMPLOYMENT PRACTICES

The Contractor shall agree that neither it or its subcontractors, except in the case of a bona fide occupational qualification or need, to refuse to hire or employ or to bar or to discharge from employment any individual or to discriminate against such individual in compensation or in terms, conditions or privileges of employment because of the individual's race, color, religious creed, age, sex, gender identity or expression, marital status, national origin, ancestry, present or past history of mental disability, intellectual disability, learning disability, physical disability, including, but not limited to, blindness or status as a veteran. The aforementioned terms are obtained from Connecticut General Statutes Section 46a-60, *et seq.*, entitled "Discriminatory employment practices prohibited," as amended.

14. FORM OF AGREEMENT BETWEEN CITY OF MERIDEN AND CONTRACTOR

The Agreement for the work will be written on the Agreement between City of Meriden and Contractor, wherein the basis of payment is a stipulated sum.

15. LOCAL SUBCONTRACTORS, SUPPLIERS, etc.

Local subcontractors, material suppliers, and labor in the City of Meriden should be considered and sought out insofar as it is practical in the performance of this project.

16. CITY OF MERIDEN CODE OF ETHICS

The City of Meriden has adopted a Code of Ethics located in Chapter 21 of the Code of the City of Meriden, sections 21-1 through 21-15, inclusive, which are expressly incorporated herein by reference. The terms of the Code of Ethics shall constitute a part of any contract or agreement entered into by the City of Meriden as a result of this bid as if those terms were fully set forth in such contract or agreement.

Bidders are specifically advised that the Code of Ethics prohibits public officers and employees, as well as their immediate families and businesses, with which they are associated from participating in any transaction which is incompatible with the proper discharge of official duties or responsibilities. Bidders are also advised that the Code of Ethics contain provisions with respect to paid contractors and former employees and officials.

BIDDERS SHOULD NOTE THAT BIDS, CONTRACTS, AND AGREEMENTS ENTERED INTO OR AWARDED IN VIOLATION OF THE CODE OF ETHICS ARE VOIDABLE BY RESOLUTION OF THE CITY COUNCIL OF THE CITY OF MERIDEN.

Copies of the Code of Ethics may be obtained from the office of the City Clerk or may be found online on the City of Meriden's website.

17. NON-COLLUSION BID STATEMENT

Each bidder submitting a bid to the City of Meriden for any portion of the work contemplated by the documents on which bidding is based shall execute and attach thereto the sworn Non-Collusive Bid Statement, to the effect that the bidder has not colluded with any other person, firm, or corporation in the submission of the bid.

18. SOIL CONDITIONS

The City of Meriden does not guarantee the accuracy of any information which it may have obtained as to the kind or condition of the soil that may be encountered in the performance of the proposed work; neither does the City of Meriden represent that the plans and specifications drawn are based upon any soil data so obtained. The City of Meriden does not make any representations as to the soil data so obtained. The City of Meriden does not make any representations as to the soil conditions to be encountered or as to foundation materials.

19. AWARD IN CASE OF A TIE

In the event there are two or more responsive bidders, the decision to award will be based by the following criteria and in the following order:

- a. The incumbent will be awarded the bid over that of another bidder.
- b. In the case of a multi-item bid, if one bidder has been awarded other items from the same bid and the other bidder has not, the bidder with the multiple awards will be awarded the bid over that of another bidder.
- c. The bidder located in the State of Connecticut will be awarded the bid over that of another bidder.
- d. The winner of a coin toss will be awarded the bid over that of another bidder.

The above-referenced provisions do not apply to those situations in which more than one City-based business responsible bidder has submitted bids not more than ten (10) percent higher than the lowest bid and has agreed to accept the award of the bid at the amount of the lowest bid. Under such circumstances, the provisions of the Code of the City of Meriden, section 13-4, are controlling, as set forth under Section 8 of this 'Information to Bidders.'

20. ASSIGNMENT OF CONTRACT

No contract may be assigned without the written consent of the Purchasing Officer or designee.

21. PERMITS

The Contractor shall be responsible for obtaining any and all necessary permits required by the City of Meriden prior to the commencement of work. The Contractor may contact the City of Meriden Building Department for permit information at (203) 630-4091. For all other required permits, contact the City of Meriden Engineering Department at (203) 630-4018.

22. BID PRICE AND PAYMENT

The City of Meriden is exempt from the payment of the excise taxes imposed by the Federal government and the Sales and Use Tax of the State of Connecticut under Connecticut General Statutes; accordingly, such taxes shall not be included in the bid price.

The City of Meriden, unless stated otherwise in the bidding documents or Contract, will make payment to the Contractor not less than thirty (30) days following completion of services.

23. QUALITY

All materials, equipment, supplies, and services shall be subject to rigid inspection. If defective material, equipment, supplies, or services are discovered, the Contractor shall remove or make good such material, equipment, or supplies without extra compensation. It is expressly understood and agreed that any inspection by the City of Meriden will in no way lessen the responsibility of the Contractor or release Contractor from the obligation to perform and deliver to the City sound and satisfactory materials, equipment, supplies, or allow the cost to be deducted from any monies due it from the City of Meriden. All services will be performed in a workmanlike manner.

24. INSURANCE

The successful bidder shall be required to provide a Certificate of Insurance denoting general liability, automobile liability, workers compensation liability, and other coverage required by the City's Risk Manager.

25. CITY HALL CLOSING

If Meriden City Hall is closed due to inclement weather, or any other unforeseen event, bids will be due at the same time on the next business day that City Hall is open.

CITY OF MERIDEN, CONNECTICUT

B022-36 – Sidewalk Spot Repairs

REQUEST FOR STATUS AS A MERIDEN-BASED BUSINESS

Bidders are specifically advised that the City of Meriden has adopted Section 3-14 of the Code of the City of Meriden which requires, but is not limited to, a local preference requiring, in part, that a “City-based business” shall mean a business with its principal place of business located within the boundaries of the City of Meriden. A business shall not be considered a “City-based business” unless evidence satisfactory to the Purchasing Department has been submitted with each bid by said business to establish that it has a bona fide principal place of business in the City of Meriden. Such evidence may include evidence of ownership or a long term lease of the real estate from which the principal place of business is operated, or payment of property taxes on the personal property of the business.

In determining the lowest responsible bidder, the Purchasing Department shall also consider the following:

Any City-based business bidder which has submitted a bid not more than ten (10%) percent higher than the low bid. Such City-based business shall agree to accept the award of the bid at the amount of the low bid. The acceptance shall be submitted in writing to the Purchasing Department no later than the same time of the bid opening on the next business day following the opening of the bid.

If more than one City based business bidder have submitted bids not more than ten (10%) percent higher than the low bid and have agreed to accept the award of the bid at the amount of the low bid, the lowest responsible bidder shall be that one which has submitted the lowest bid.

This section shall not apply in those instances where the bid requested involves a cooperative purchasing arrangement between the City of Meriden and other municipalities or the State of Connecticut.

The bidder may submit any additional information he/she desires that he/she feels establishes the company as a city based business, including but not limited to; evidence of ownership, a long term lease of the real estate from which the principal place of business is operated, or payment of property taxes on the personal property of the business.

1) Name of Bidder: _____

2) Meriden Office Address: _____

3) Minority owned: Yes _____ No _____

4) The undersigned hereby authorizes and requests any persons, firms, or corporations to furnish any information requested by the City of Meriden, in verification of the recitals comprising this Request for Status as a City Based Business.

Dated at: _____ this: _____ day of _____, 20 _____

Name of bidder: _____

By: _____

Title: _____

IF REQUESTING STATUS AS A MERIDEN-BASED BUSINESS, SUBMIT THIS FORM WITH YOUR PROPOSAL.

1. Minority owned business? _____ yes _____ no
2. Years organized. _____
3. Is your company a corporation _____ yes _____ no
If yes where incorporated? _____
4. How many years have you been engaged in business under your present firm name? _____
5. Former Firm Name (if any) _____
6. List total number of Personnel _____
7. Is any principal of your firm an employee or public official of the City of Meriden, or an immediate family member of an employee or public official of the City of Meriden? (Definition of immediate family includes: an individual's spouse, fiancé or fiancée; the parent, brother or sister of such individual or spouse; and the child of such individual or the spouse of such child.)
_____ yes _____ no
8. List Vehicles and Equipment that you will use to perform this work: (show age of vehicles and equipment, sizes, capacities, etc.)

9. List the work to be performed by Subcontractors and summarize the dollar value of each subcontract.

10. List the name and address of the more important contracts recently completed by you, starting the approximate gross cost for each, and the month and year completed:

11. General character of work performed by you _____

12. Have you ever failed to complete any contract awarded to you? If so, where and why?

13. Have you ever defaulted on a contract? If so where and why?

14. Have you ever filed bankruptcy: _____ Please explain: _____

15. Will you, upon request, furnish any information that may be required by the City of Meriden? _____
16. The undersigned hereby authorizes and request any person, firm or cooperation to furnish any information requested by the City of Meriden, in verification of the recitals comprising this Statement of Bidder's Qualifications.

Dated this _____ day of _____, 20____ year

 Name of Bidder

 Title

State of _____
 County of _____

_____ being duly sworn deposes and says that they are
 Name _____ of _____
 title _____ name of organization
 and that the answers to the forgoing question and all statement therein contained are true and correct

Subscribed and sworn to before me
 this _____ day of _____ 20____
 day month year

 Notary Public signature

My commission expires _____

BID FORM

**B022-36
Sidewalk Spot Repairs**

**Date of Opening: April 13, 2022
At: 11:00 AM**

To: Adam B. Tulin, MPA
Purchasing Officer
142 East Main Street, Room 210
Meriden, CT 06450-8022

The undersigned _____, doing business in the City/Town of _____, in the State of _____, herewith, after reading thoroughly the Specifications and other Bid documents (including if any addendum or addenda) submit the following proposal:

Quantities below are an approximation of a sample project a contractor might be awarded under this contract. Please utilize these quantities to prepare your bid form but it is no promise or guarantee of work.

B022-36 – Sidewalk Spot Repairs

ITEM	Approx. Qty & Unit Measure	Item Description With Unit of Measure, Written In Words:	Unit Price Dollars & Cents	Extended Total Dollars & Cents
1	200 S.F.	Concrete Sidewalk: _____ _____	\$ _____	\$ _____
2	100 S.F.	Concrete Driveway Ramps: _____ _____	\$ _____	\$ _____
3	50 S.F.	Concrete Handicap Ramps: _____ _____	\$ _____	\$ _____
4	100 L.F.	Cast in Place Concrete Curbing _____ _____	\$ _____	\$ _____
5	100 S.Y.	Bituminous Concrete Driveway Repair: _____ _____	\$ _____	\$ _____

**Sample Total \$ _____
For Comparison**

Receipt of Addenda is acknowledged:

No: _____ Dated: _____

No: _____ Dated: _____

NAME OF BIDDER _____

ADDRESS _____

BY: _____

Print or type name

Title

SIGNATURE _____ DATE _____

TELEPHONE _____ E-Mail _____

PLEASE NOTE: All spaces must be filled in with figures or words or your bid may be automatically rejected.

Attached are the Technical Specifications - Total of 18 Pages

TECHNICAL SPECIFICATIONS

TABLE OF CONTENTS

<u>SECTION</u>	<u>TITLE</u>
01540	MAINTENANCE AND PROTECTION OF TRAFFIC
01562	DUST CONTROL
02501	CONCRETE SIDEWALKS AND RAMPS
07020	CONCRETE CURBING
07131	PERMANENT ASPHALT PAVEMENT INSTALLATION & REPAIR
08060	RESTORATION

SECTION 01540

MAINTENANCE AND PROTECTION OF TRAFFIC

****NOTE: This does not include the cost for Uniformed Police Officers**

1.0 Description

This work shall consist of the maintenance and protection of vehicular and pedestrian traffic on public streets and sidewalks in conformity with the requirements of this specification and other contract documents. The contractor assumes full liability for the maintenance and protection of vehicular and pedestrian traffic.

The Contractor shall maintain and protect one lane of through traffic in each direction and turning lanes at intersections, each lane on a paved travel path not less than 11 feet in width.

Excepted therefrom will be those periods, during the allowable periods, when the Contractor is actively working, at which time the Contractor will be allowed to maintain and protect at least an alternating one-way traffic operation on a paved travel path not less than 12 feet in width. The length of the alternating one-way traffic operation shall not exceed 350 feet.

2.0 Materials

The contractor shall provide all signs, barricades, lights, traffic cones, and other items necessary to forewarn and guide vehicular and pedestrian traffic, as directed by the City Engineer and Meriden Police Department, in accordance with the regulations and specifications of the City, ConnDOT, and the Federal Manual on Uniform Traffic Control Devices (MUTCD).

3.0 Construction Methods

- a. General: The contractor shall obey all applicable state and local regulations regarding maintenance and protection of traffic. The Contractor shall be solely responsible to provide the means and methods for safe and efficient vehicular and pedestrian travel, in accordance with the regulations and specifications of the City, ConnDOT, and the MUTCD.
- b. Pre-Construction Meeting: Prior to commencement of any construction operations, the contractor shall meet with the Engineer or his representative and a representative of the Meriden Police Department to discuss traffic control requirements for the streets where work shall occur. Meriden Police will determine the extent of traffic control required. Traffic control will be provided by uniformed City of Meriden Police Officers. The Contractor shall submit Police Department invoices to the

Engineer for payment. If the Contractor requests additional traffic control beyond what is required by the Meriden Police Department, it will be at his own expense.

SECTION 01540 – Continued:

- c. Existing Streets Open: Except as otherwise provided in this section, or as permitted by the Engineer, the Contractor shall keep all existing streets open to traffic for the full length of the project. Travel lanes shall be drained and kept reasonably smooth and in suitable condition at all times in order to provide minimum interference to traffic.
- d. Street Closings: The closing of any street for any purpose shall be for the length of time and subject to the restrictions the Engineer may impose. No street shall be closed without the Contractor having received prior approval of the Engineer. Notifications of road closures must be made to the City Manager, Police and Fire Departments, Ambulance service, and Board of Education prior to approval being granted, and a Public Notice must be published in the newspaper at least 48 hours prior to the proposed closure.
- e. Provisions for Private Access: The Contractor shall schedule his operations to cause a minimum of inconvenience to occupants of existing properties within the work area. Prior to restricting or eliminating vehicular access to any property the Contractor shall give the occupants of the property twenty-four hours notice. Thereafter, the Contractor shall complete the items of work and restore access as rapidly as reasonably possible. At no time shall the Contractor prevent pedestrian access to any existing building. Where existing access is eliminated and other access substituted, the substituted access shall be maintained by the Contractor to a quality equal to or better than the eliminated access.

4.0 Method of Measurement

This item will not be measured for payment.

5.0 Basis of Payment

No separate payment will be made for “Maintenance and Protection of Traffic.” Compensation for such work, including all equipment, labor and materials shall be considered to be included in the prices bid for other items of work.

SECTION 01562

DUST CONTROL

1.0 Description

This item shall consist of furnishing water and/or calcium chloride and spreading it on the subgrade or in other areas of the project, for the purpose of allaying dust.

Calcium Chloride shall not be used on the project in areas that could result in potential contamination of well water.

2.0 Materials

Calcium chloride shall conform to the requirements of AASHTO M114, except that the pellet form and the flake form shall be equally acceptable. Water shall be non-polluted.

3.0 Construction Methods

Calcium chloride shall be applied at the locations, at such times and in the amounts necessary to prevent and control dust from becoming a nuisance to the public and to abutting property owners. It shall be spread in a manner and by such devices that uniform distribution is attained over the entire area on which it is placed.

4.0 Method of Measurement

This item will not be measured for payment.

5.0 Basis of Payment

No separate payment will be made for "Dust Control." Compensation for such work, including all equipment, labor and materials shall be considered to be included in the prices bid for other items of work.

SECTION 02501

CONCRETE SIDEWALKS AND RAMPS

1.0 Description

This item shall consist of Portland cement Concrete sidewalks, driveway ramps and pedestrian ramps constructed on a processed aggregate base course in the locations and to the dimensions and details shown on the plans or as ordered and in accordance with these specifications.

This item shall include furnishing and installing Detectable Warning Strips in the locations and to the dimensions and details shown on the plans or as ordered by the Engineer.

2.0 Materials

Materials for this work shall conform to the requirements of Article M.03.01 of ConnDOT Form 816 for Class “C” Concrete.

a. Portland Cement Concrete

The concrete mix shall conform to Class “C” concrete and shall be proportioned in accordance with the following requirements:

Approximate Proportions by Weight:	1-2-3
Water/Cement Ratio:	0.53
Cement Factor (pounds/cubic yard)	658

b. Air-Entraining Admixtures

Air entraining admixtures conform to the requirements of Article M.03.01 of ConnDOT Form 816.

c. Coarse Aggregate

Coarse aggregate shall be broken stone or gravel consisting of clean, hard, tough, durable fragments of uniform quality throughout; free from soft pieces, mud, dirt, organic or other injurious material and shall contain not more than 1% dust by weight. When tested with magnesium sulphate solution for soundness using AASHTO Method T-104, coarse aggregate shall not have lost more than 10% after 5 cycles; when tested by the Los Angeles machine using AASHTO Method T-96, coarse aggregate shall not have a loss of more than 40%. The required grading shall be obtained by using 100 percent of $\frac{3}{4}$ inch coarse aggregate.

SECTION 02501 – Continued:d. Fine Aggregate

Fine aggregate shall be sand consisting of clean, hard, durable, uncoated particles of quartz or other rock, free from lumps of clay, soft or flaky material, loam, organic or other injurious material. In no case shall sand containing frozen lumps be used. Fine aggregate shall contain not more than 3% of material finer than the #200 sieve, using AASHTO method T-11. When subjected to colorimetric test shall not produce a color darker than Gardner Color Standard No. 11, using AASHTO Method T-21. If the fine aggregate fails to meet this requirement, the provisions of AASHTO M6 Section 5.2 will govern. Fine aggregate shall be uniformly graded from coarse to fine and shall meet the following gradation:

Square Mesh Sieve	3/8"	#4	#8	#16	#30	#50	#100
Percent Passing By Weight	100	95-100	80-100	50-85	25-60	10-30	2-10

e. Portland Cement: Portland cement shall be Type IIA and shall conform to the requirements of AASHTO M-134. Cement having a temperature exceeding 160 degrees F at the time of delivery to the mixer shall not be used.

f. Water: Water shall be reasonably clean, shall not be salty or brackish and shall be free from oil, acid, and injurious alkali or vegetable matter and shall be tested as prescribed by AASHTO T-26.

g. Processed Gravel Base: Coarse and fine aggregates shall be combined and mixed by approved methods so that the resulting material shall conform to the following gradation requirements:

Square Mesh Sieve	2-1/2"	1-3/4"	3/4"	1/4"	#40	#100
Percent Passing By Weight	100	95-100	50-75	25-45	10-25	3-12

h. Welded Wire Mesh Reinforcement: Welded wire mesh reinforcement shall be cold drawn steel wire conforming to the requirements of AASHTO M-55. The type of mesh shall be approved by the Engineer.

SECTION 02501 – Continued:

- i. Preformed Expansion Joint Filler: Preformed expansion joint filler shall be the bituminous cellular type and shall conform to the requirements of AASHTO M-213.
- j. Detectable Warning Strip: The Detectable Warning Strip shall be a prefabricated detectable warning surface tile for the application designated as manufactured from Engineered Plastics Inc. 300 International Drive, Suite 100 Williamsville, NY 14221, telephone number (800) 682-2525 or the approved equal from ADA Fabricators, INC. P.O Box 179 North Billerica, MA 01862 telephone number (978) 262-9900. The tile shall conform to the dimensions shown on the plans and have a brick red homogeneous color throughout in compliance with Federal Standard 595A Color #22144 or approved equal.

3.0 Construction Methods

- a. Excavation: Excavation, including removal of any existing sidewalk, shall be made to the required depths below the finished grade, as shown on the plans or as directed. All soft and yielding material shall be removed and replaced with suitable material.
- b. Processed Aggregate Base: The processed aggregate base shall be placed in layers not over 6 inches in depth and to such a depth that after compaction it shall be at the specified depth (eight inches or as directed by the Engineer) below the finished grade of the walk. The base shall be wetted and rolled or tamped after the spreading of each layer. The base shall be placed full depth six (6") inches wider on each side than the neat lines of the concrete.

The finished surface of the base shall be fine graded after compaction to within 3/8" plus or minus of subgrade. The finished base course shall be maintained true to line and grade in a compact condition until placement of the concrete. The completed base must be approved by the Engineer prior to setting of forms.

- c. Forms: Forms shall be standard metal forms or 2" surfaced plank, straight, free from warp and of sufficient strength to prevent springing. At corner radii, thinner material may be used but the material and installation must be approved by the Engineer prior to use. Forms shall be of approved cross-section, have a flat surface on top and shall be of depth equal to the concrete being placed. Forms shall be securely staked, braced and held firmly to the required line and grade and shall be of sufficient strength and tightness to retain plastic concrete. All forms shall be cleaned of mortar and dirt and shall be coated with suitable form oil prior to each use.

Preformed expansion joints shall be held securely in place by means of a steel template or steel pins to true line and grade and shall be 1/4 inch minimum deeper than the concrete trimmed flush with the concrete walk after the curing cycle.

SECTION 02501 – Continued:

Dummy joints or planes of weakness shall be hand formed, straight and true, and shall consist of grooves formed in the top surface of the concrete at a depth of $\frac{1}{4}$ of the depth of the concrete. Dummy joints shall be located transversely every five (5) feet and as detailed on the plans or as ordered.

d. Mixing and Placing Concrete:

1. Concrete shall be mixed in approved transit mixers (concrete mixed in truck mixer en route to or at point of placement). Transit mixers shall be loaded in approved batching plants. Batching and mixing on job site will not be allowed. Truck mixing shall not be less than four (4) revolutions at mixing speed. Concrete shall be incorporated into the work within 45 minutes after the water was added to the mix. Concrete shall be discharged within 1-1/2 hours from the time the dry aggregates are loaded into the mixture. Truck mixers shall be equipped with accurate gauges to measure the quantity of water incorporated into the mix and with an accurate drum revolution counter.
2. Slump of the concrete, as determined by AASHTO method T-119, shall be not less than two (2) inches nor more than four (4) inches. Concrete shall contain not less than 4 nor more than 6 percent entrained air at the time the concrete is deposited in the forms, as determined by AASHTO Methods T-152 or T-121.
3. Immediately before concrete is placed, the base course shall be moistened. It shall be compact and smooth. The entire base course under the walk to be constructed in that pour shall be complete and accepted prior to beginning or placing of concrete. At no time shall concrete be placed on soft, muddy, frozen, porous or rutted base.
4. Concrete shall be placed only in the presence of an inspector. It shall be deposited in a plastic condition and shall be a homogeneous mass without segregation of aggregates during depositing and spreading. All chutes used to deposit concrete shall be metal or metal lined. Depositing and spreading concrete shall be continuous between transverse joints. Workmen shall not walk in concrete during placing and spreading. Concrete alongside forms and each side of transverse joints shall be thoroughly consolidated. Concrete shall be placed only when the temperature is 40 degrees F and rising, and when it can be expected that the placing and finishing can be accomplished at that temperature of above.

SECTION 02501 – Continued:

5. Reinforcement shall be placed in the sidewalk at driveway crossings two (2) inches above the bottom surface of the concrete and parallel to the finished grade of the walk. Care shall be taken to hold the reinforcing mesh to the proper line and grade. Successive and adjacent pieces of reinforcing mesh shall be lapped six (6) inches. Reinforcing mesh shall be one (1) inch clear from the side of forms and expansion joints.
 6. A 1/4 inch thick preformed expansion joint shall be installed at transverse locations not to exceed twenty longitudinal feet, between curbs and walks, at structures projecting into and adjacent to the walk and concrete ramps as shown on the plans and details, or as directed by the Engineer.
 7. Formed surfaces shall be kept continuously wet for the duration of the curing period (prior to, during, and after form removal) or until curing compound is applied.
 8. If moist curing is discontinued before the end of the curing period, white pigmented curing compound shall be applied immediately, following the procedures specified under “Curing.”
- e. Consolidation and Finishing: Consolidation and finishing shall be by hand or mechanical equipment. Experienced concrete finishers shall be used at all times in the finishing of the surface. Concrete shall be struck off by means of a hand screed resting on the side form and weighing not less than 10 pounds per linear foot or by portable non-vibrating screed. Strike off shall bring the concrete to the required grade and contour. Screeding shall be a transverse, sawing motion carrying a roll or mortar in front of it. As soon as possible after screeding, the surface shall be longitudinally floated with a sawing motion commencing at one side and wasting excess material over the other side. Movement ahead in a longitudinal direction shall be one-half the length of the float. The surface irregularities shall be removed by use of a finishing lute. The initial edging shall be performed, then the surface shall be dragged with a clean, wet, stiff bristle broom. Before initial set, the final edging against forms and expansion joints and of dummy joints shall be made. All edging shall be true to line and grade and shall not create depressions in the surface.

SECTION 02501 – Continued:

- f. Curing: Liquid curing compound shall be applied immediately following the disappearance of the water sheen following the final finishing and before any marked dehydration of the concrete or surface checking occurs. The compound shall be applied in two even coats of one gallon per 200 square feet, with a continuous even film at right angles to each other and with not more than 30 minutes between coats. Application shall be by pressure sprayer giving a fine uniform spray. Should rain fall on the newly coated surface before it dries, a new application shall be maintained to protect the concrete surface from rain during finishing operations and until the curing compound dries. The walk shall be barricaded and all traffic shall be restricted for at least seven (7) days.

- g. Removal of Forms and Backfilling: Forms shall not be removed until the concrete has set at least 12 hours unless approved by the Engineer. Care shall be taken in removal so that no damage is done to the edges of the walk and to the surface membrane curing. All honeycomb shall be pointed and the sides sprayed with liquid curing compound if not immediately backfilled.

The sides of the walk and/or ramp shall be backfilled with a suitable material as directed by the Engineer and shall be graded and thoroughly compacted flush with the top of the walk and to meet the existing adjacent grade with no pockets or depressions to trap water. All surplus material shall be removed, the concrete surface swept clean and the site left in a neat and presentable condition to the satisfaction of the Engineer.

- h. Cold Weather: When, in the opinion of the Engineer, the weather is such that that any concrete work which has not completely cured is liable to be frozen, such concrete shall be protected by covering as soon as it has hardened sufficiently. On top of the curing compound shall be placed 6-8 inches of hay or straw, or an approved thermal blanket. A cover sheet of width sufficient to overlap the edges of the walk or ramp shall then be placed and securely fastened down. The protective material shall remain in place until ordered removed by the Engineer and all material promptly removed from the site. Any concrete placed during cold weather and not properly protected will not be accepted.

- i. Concrete in Hot Weather: When climatic or other conditions are such that the temperature of the concrete may reasonably be expected to exceed 90 degrees F at the time of delivery at the work site, during placement, or during the first 25 hours after placement, the following provisions also apply:
 - 1. The contractor shall maintain the temperature of the concrete below 90 degrees F during mixing, conveying, and placing. Methods used shall conform to “Recommended Practice for Hot Weather Concreting”, ACI Standard 305.

SECTION 02501 – Continued:

2. The concrete shall be placed in the work immediately after mixing. Truck mixing shall be delayed until only time enough remains to accomplish it before the concrete is placed.
 3. Exposed concrete surfaces which tend to dry or set too rapidly shall be continuously moistened by means of fog sprays or otherwise protected from drying during the time between placement and finishing and after finishing.
 4. Finishing of exposed surfaces shall be started as soon as the condition of the concrete allows and shall be completed without delay.
 5. Concrete surfaces exposed to the air shall be covered as soon as the concrete has hardened sufficiently and shall be kept continuously wet for at least the first 24 hours of the curing period and for the entire curing period unless curing compound is applied as specified under “Curing.”
- j. Water Gates and Gas Gates: All of the water gates and gas gates which are encountered within the limits of the work shall be aligned properly over shutoff and shall be adjusted to meet the grade of the proposed surface. All boxes shall be free of all dirt, rocks, etc. The Contractor shall be responsible for replacing any broken gate boxes. Materials shall be provided by the Meriden Water Department if gate boxes were damaged prior to construction. All labor costs are the Contractor’s responsibility. The Contractor will coordinate with Yankee Gas and Meriden Water Department to obtain replacement boxes.
- k. Detectable Warning Strip: The Detectable Warning Strip shall be set directly in poured concrete according to the plans and the manufacturer’s specifications or as directed by the Engineer. The contractor shall place two 25 pound concrete blocks or sandbags on each tile to prevent the tile from floating after installation in wet concrete. The Contractor is responsible for removing any material spatters or debris and repairing any damage to the existing sidewalk arising from the installation of the tile. The protective film on the detectable warning strip shall be removed as soon as the concrete has cured.

4.0 Method of Measurement

Concrete sidewalk and ramps shall be measured for payment by the total square feet of the top surfaces of the sidewalk, driveway ramps, and pedestrian ramps, excluding the exposed top surface of the concrete curbing.

The Detectable Warning strip will not be measured for payment. All materials, equipment, tools and labor incidental thereto shall be included in the Bid price for Concrete Sidewalk.

SECTION 02501 – Continued:

5.0 Basis of Payment

Payment for concrete sidewalks, driveway ramps, and pedestrian ramps shall be at the contract unit price per square foot of “Concrete Sidewalk”, “Concrete Driveway Ramp”, or “Concrete Pedestrian Ramp” complete in place and accepted.

Price and payment for Concrete Sidewalk”, “Concrete Driveway Ramp”, and “Concrete Pedestrian Ramp” in place shall include the removal of all existing sidewalks and curbing, the removal and replacement of all bituminous concrete pavement, all forms necessary for tree pits, grass and brush and all equipment and labor, excavation, backfill (except rock excavation), bedding, and all other miscellaneous items necessary to complete the work, and not listed for separate payment in the bid.

SECTION 07020

CONCRETE CURBING

1.0 Description

The work under this item shall consist of the construction of concrete curbing, placed on a processed aggregate base course in the locations and to the dimensions and details shown on the plans or as ordered and in accordance with these specifications.

2.0 Materials

- a. Materials for this work shall conform to the requirements of Article M.03.01 of ConnDOT Form 816 for Class “C” Concrete.
- b. Joint filler shall conform to the requirements of Article M.03.01 of Form 816.
- c. Concrete shall have a minimum 28 day compressive strength of 3,000 psi and shall contain 4 to 6 % entrained air unless otherwise approved by the Engineer. The material for precast concrete shall conform to the requirements of Article M.03.01, except that the coarse aggregate gradation may be varied with the approval of the Engineer.
- d. Liquid membrane curing compound shall conform to the requirements of AASHTO M148 Type 2 Class “B”.

3.0 Construction Methods

- a. Excavation: Excavation, including removal of any existing curbing, shall be made to the required depths below the finished grade, as shown on the plans or as directed. All soft and yielding material shall be removed and replaced with suitable material.
- b. Placing Concrete:
 1. Slump of the concrete shall be not less than two (2) inches or more than four (4) inches.

Concrete shall contain neither less than 4 nor more than 6 percent entrained air at the time the concrete is deposited in the forms, as determined by AASHTO Methods T-152 or T-121.

2. Concrete curbing shall be constructed in sections having a uniform length of approximately 10 feet, unless otherwise directed. The length of these sections may be varied slightly where necessary for closures, but no section less than 6 feet in length will be permitted. These sections shall be separated by an approved method at the time of placing concrete.
- c. Forms: Where forms are used, they shall be so constructed that the form for exposed surfaces may be removed before the concrete has taken final set in order to permit correction of surface irregularities.

SECTION 07020 – Continued:

- d. Curing and Protection: Liquid curing compound shall be applied immediately following the disappearance of the water sheen following the final finishing and before any marked dehydration of the concrete or surface checking occurs. The compound shall be applied in two even coats of one gallon per 200 square feet, with a continuous even film at right angles to each other and with not more than 30 minutes between coats. Application shall be by pressure sprayer giving a fine uniform spray. Should rain fall on the newly coated surface before it dries, a new application shall be maintained to protect the concrete surface from rain during finishing operations and until the curing compound dries.

- e. Backfilling: After concrete has set sufficiently, the grading shall be completed to the lines shown on the plans, or as ordered, by refilling to the required elevation with approved material which shall be placed in layers of not more than 6 inches in depth and compacted until firm and solid.

4.0 Method of Measurement

Concrete curbing shall be measured for payment by the total linear feet of the top surface of the curb.

5.0 Basis of Payment

This work will be paid for at the contract unit price per linear foot of “Concrete Curbing”, complete in place and accepted.

Price and payment for Concrete Curbing in place shall include the removal of all existing curbing, excavation, gravel base, finishing, curing, backfilling and compaction, expansion joints and filler, disposal of surplus and unsuitable material and all materials, equipment, tools, labor, and work incidental to or necessary for the completion of the Item.

SECTION 07131

PERMANENT ASPHALT ROADWAY PAVEMENT

INSTALLATION AND REPAIRS

1.0 Description

The work under this item shall consist of furnishing and installing bituminous concrete, together with all labor and equipment, to the lines, grades and compacted thickness designated on the Contract Drawings, or as directed by the Engineer, and in conformance with Section 4.06 of DOT Form 816.

2.0 Materials

Generally for repairs the material shall be of like kind and thickness as the original pavement or of the type and kind shown on the Contract Drawings, or as directed by the Engineer. The material for the bituminous concrete mixture, sources of supply, formula for mix, mix tolerances, approval of mix formula and the control of the mixture shall conform to the requirements of Section M.04 of ConnDOT Form 816. Prior to use of any bituminous concrete, the job mix formula shall be approved by the Engineer.

3.0 Construction Methods

The methods employed in performing the work and all equipment, tools, machinery and plant used in handling material and executing any part of the work shall be subject to the approval of the Engineer before the work is started, and whenever found unsatisfactory, it shall be changed and improved as required by the Engineer. All equipment, tools, machinery and plant used must be maintained in a satisfactory working condition.

- a. Permanent Repairs to Roadway: Permanent repairs shall be made by the following method:
 1. The existing bituminous concrete pavement shall be cut to a neat, true line, removing all ragged edges so that the new pavement surface will extend six (6) inches over undisturbed base material. Cutting shall be by suitable equipment approved by the Engineer. The edges of the cut shall be painted with a thin, uniform tack coat conforming to the requirements of Section M.01.04 Emulsified Asphalt, just before the paving materials are placed against them.

2. Excavate to a depth of seventeen (17) inches below finished road grade. If subgrade is soft or spongy, it shall be replaced with suitable material.
3. Apply bank run gravel to a thickness of eight (8) inches after compaction and processed stone to a thickness of six (6) inches after compaction. Base and subbase materials shall be placed in layers not over six (6) inches in depth and to such a depth that after compaction it shall be at the required depth below the finished grade of the pavement. The base/subbase shall be wetted after spreading of each layer.

SECTION 07131 – Continued:

4. Apply two 1-1/2” courses of bituminous concrete, Class 1 in accordance with Section 4.06 of ConnDOT Form 816.
5. The joint between the new and existing pavement shall be sealed with a hot poured rubber joint sealing compound that meets the requirements of AASHTO M-301.

b. Compaction

This work shall conform to Section 4.06.03(9) “Compaction” of Form 816, or methods approved by the Engineer. The in-place density of each layer or course of the compacted mixture shall be compacted to a density of at least 92 percent of the theoretical density for bituminous concrete, and at least 95 percent of the modified proctor density for base and subbase courses.

c. Liability

The contractor shall be liable for maintaining road repairs for a period of two years following the date of acceptance of the project. If at any time within two years from the date that final repairs are completed, the area repaired shows any settlement or disintegration caused, in the opinion of the Engineer, by faulty backfill, materials, or methods, the whole area must be repaired by the contractor in a manner satisfactory to the Engineer. If bituminous concrete pavement repairs settle or break down for any reason during the period, the Contractor is responsible for maintenance. No extra payment shall be made for repairs.

4.0 Method of Measurement

This work will not be measured for payment.

5.0 Basis of Payment

No separate payment shall be made for “Permanent Asphalt Roadway Pavement Installation and Repairs.”

SECTION 08060

RESTORATION

1.0 Description

The Contractor shall replace and/or restore to the condition existing immediately prior to construction or better than this condition, all signs, mailboxes, topsoil, lawns, fences, walls, driveways walks, curbs, incidental works, or any and all other property removed or harmed in any way by reason of work done under this contract except pavement repair or any item excepted elsewhere in the Contract Documents.

Restoration of maintained lawns (grass) shall be as provided in Section 9.50 of ConnDOT Form 816.

2.0 Materials

As required.

3.0 Construction Methods

The work shall include the following:

- a. Replace to an equivalent depth any topsoil that has been removed during the excavation, but not less than 4 inches.
- b. Remove from the property all excess materials of construction such as stone, pipe, concrete block, gravel, etc. that the Contractor may have stockpiled for use during the course of the work.
- c. Leave the land in smooth, even condition. All ruts, holes, or other undesirable grading conditions which resulted from work under this Contract shall be filled and the area so graded to eliminate ponding. All drainage courses shall be restored to their pre-existing condition or better.
- d. Fertilize and seed those areas where the original ground cover was removed or disturbed by operations under this Contract.
- e. Reset all public or private monuments, iron pipes or other types of property line and geodetic markers damaged or disturbed by operations under this contract. This work shall be done by a licensed land surveyor or authorized agent approved by the Engineer, at no additional cost to the City.

- f. Reset, repair, relocate, or replace as directed by the Engineer, all walks, driveways, curbs, walls, pipes, utilities, fences, railings, and ornamental or utilitarian domestic accessories which may have been damaged by operations under this contract.
- g. Mailboxes shall be reset as necessary so that the front of each mailbox is no more than 12 inches from the proposed edge of road.

SECTION 08060 – Continued:

- h. Walks and driveways shall be equivalent to that removed but in no case shall walks and driveways be of less quality than that shown on the Contract Drawings.

The Contractor shall notify each property owner of those trees and shrubs which must be removed during construction. These items shall not be replaced by the Contractor unless directed to do so by the Engineer.

4.0 Method of Measurement

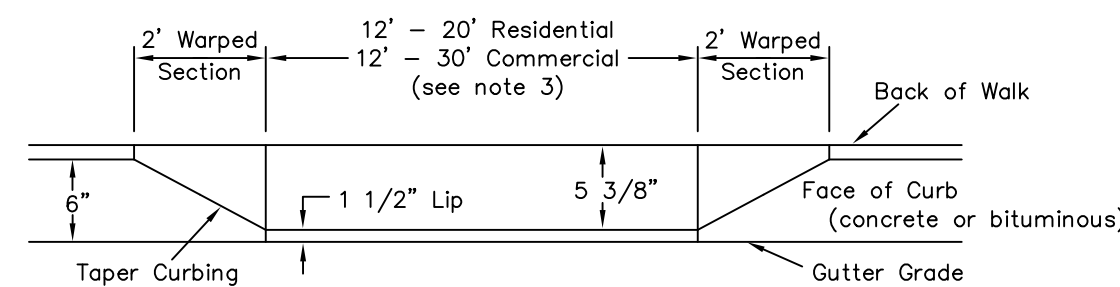
This work will not be measured for payment..

5.0 Basis of Payment

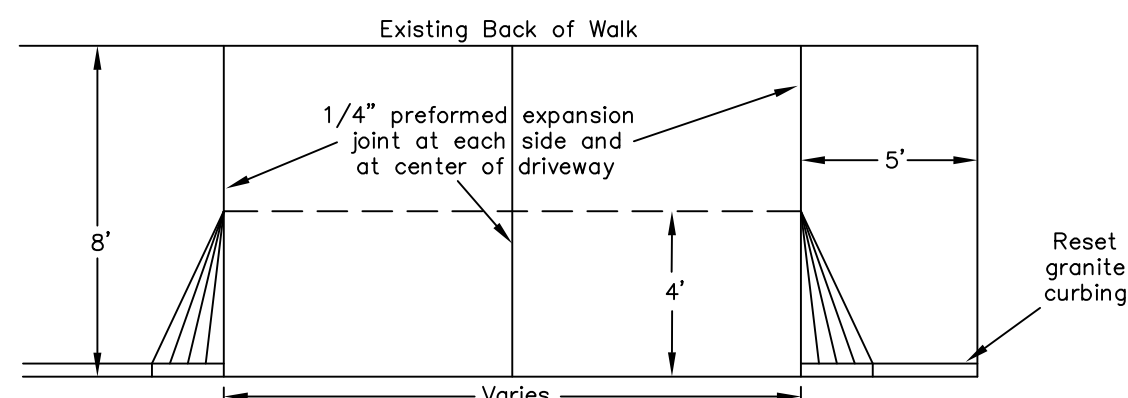
No separate payment will be made for “Restoration.”

END OF TECHNICAL SPECIFICATIONS

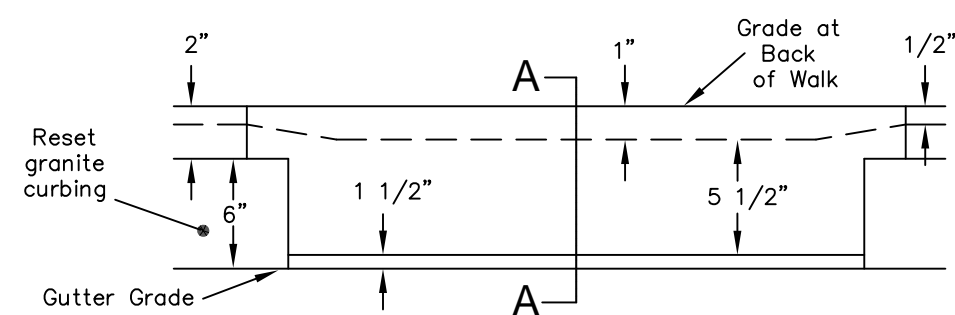
DRIVEWAYS



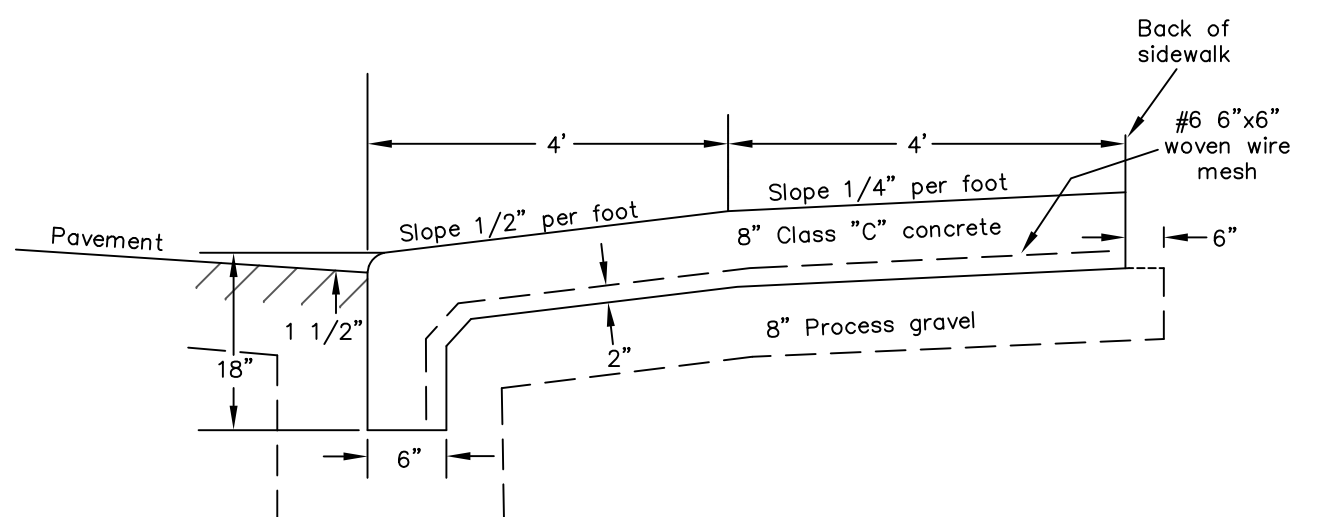
Profile
Typical Driveway



Plan



Profile

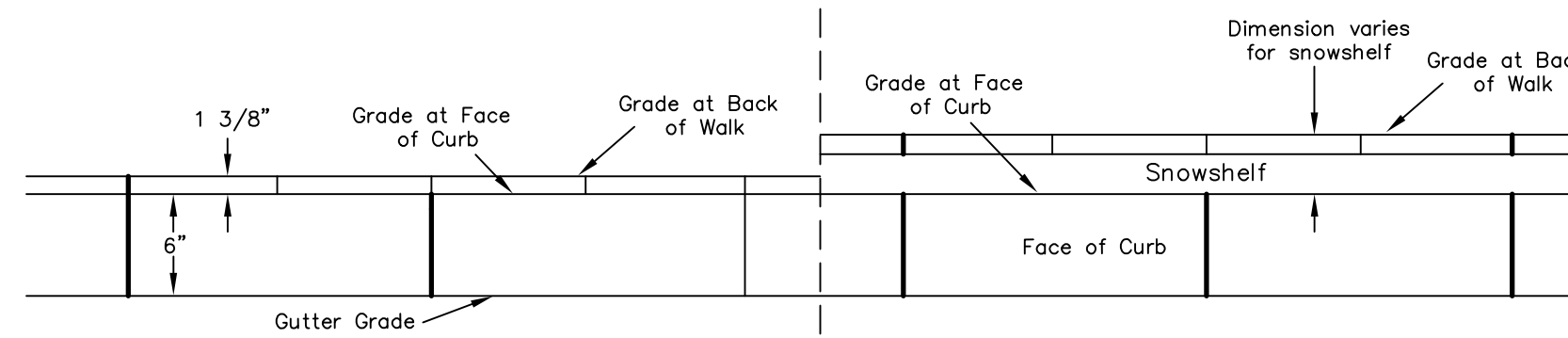


Residential Concrete Apron Replacement
(N.T.S.)

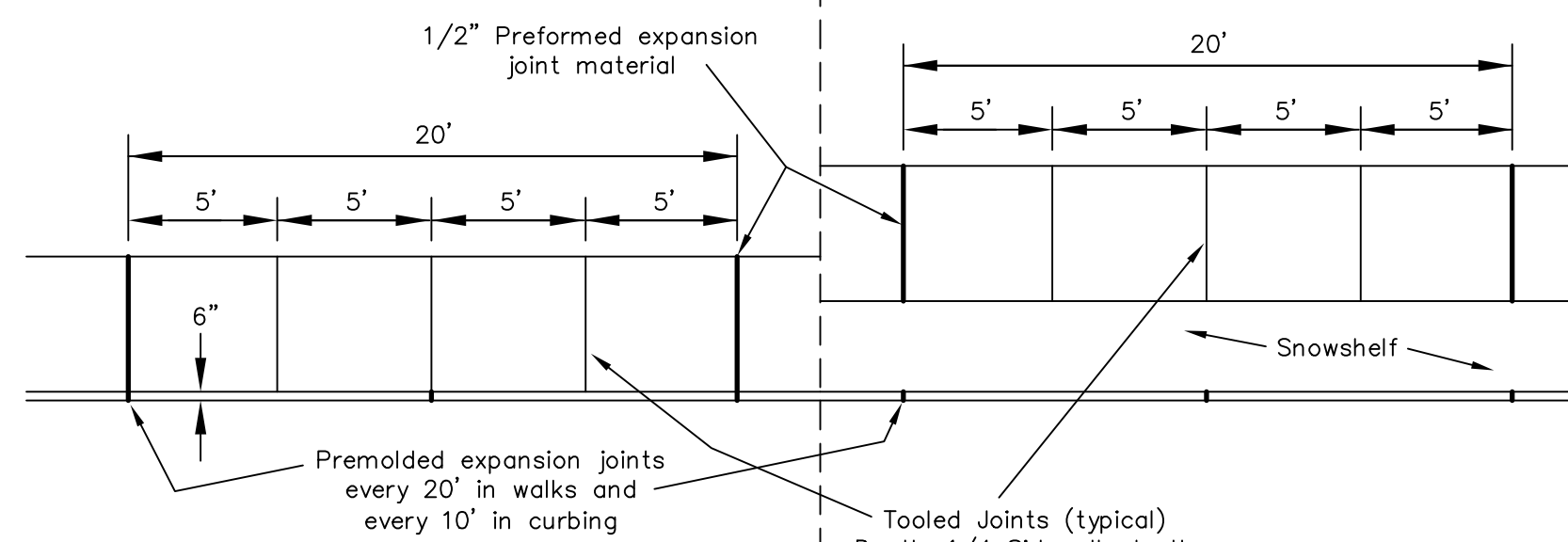
NOTES:

1. Width to accommodate mechanical compaction as approved by Engineering Department.
2. Buffer strips to be a minimum of 5' wide for new trees. Species to be approved by City Planner.
3. Driveway widths will be based upon field conditions and Planning Department approval. Maximum width will be 20' for residential or 30' for commercial property unless otherwise approved by the Planning Department.
4. Entire sidewalk sections may need to be lowered to achieve slope or as instructed by Engineering Department.
5. Bond breaker must be placed between concrete and all metal fixtures within sidewalk area.
6. Refer to Connecticut DOT sidewalk guidesheets for accessible ramp details.

SIDEWALK AND CURBING



Profile

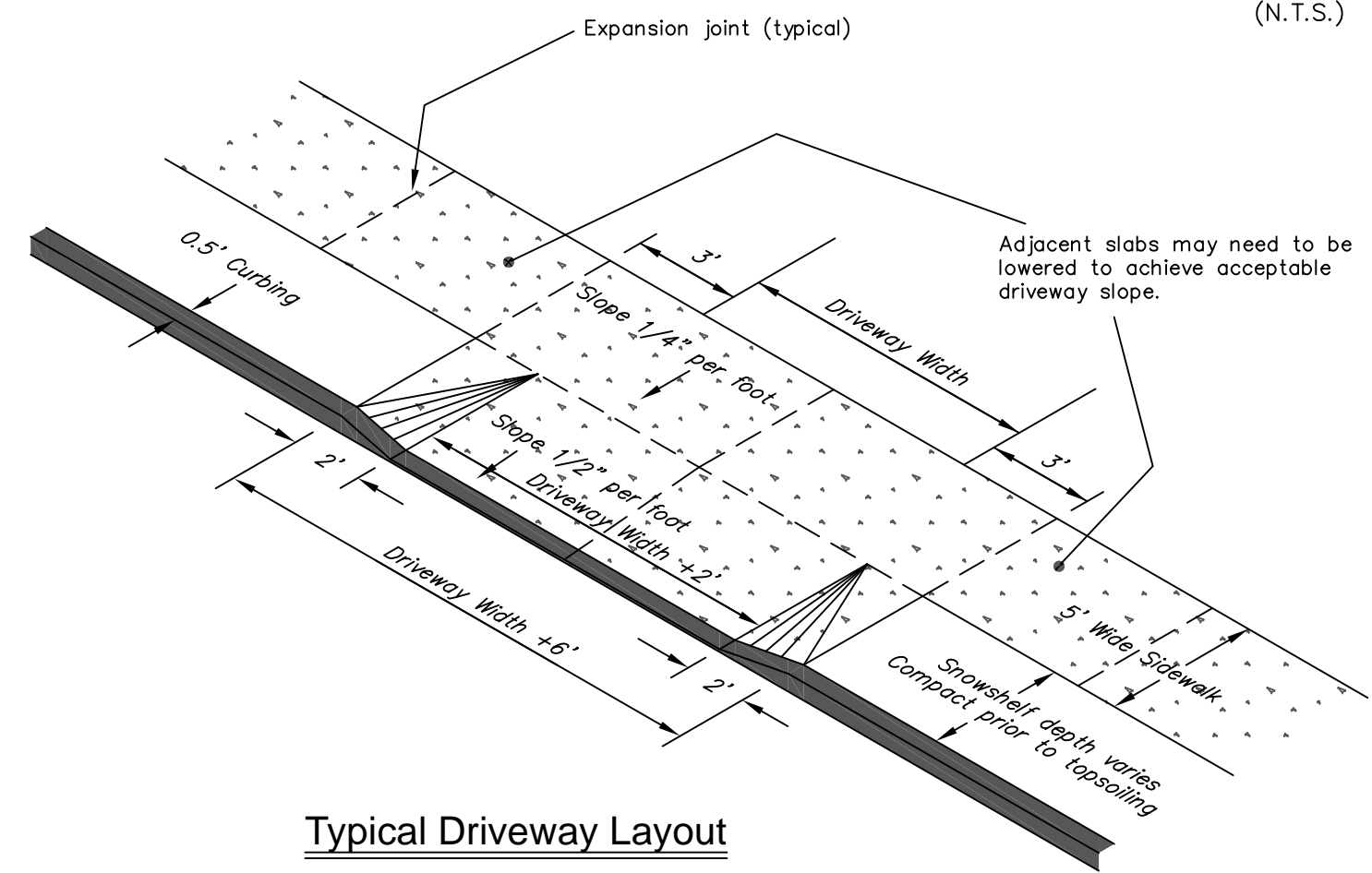


Monolithic Sidewalk Plan

CONCRETE SHALL BE CLASS 'C' AND 3300 PSI OR BETTER (N.T.S.)

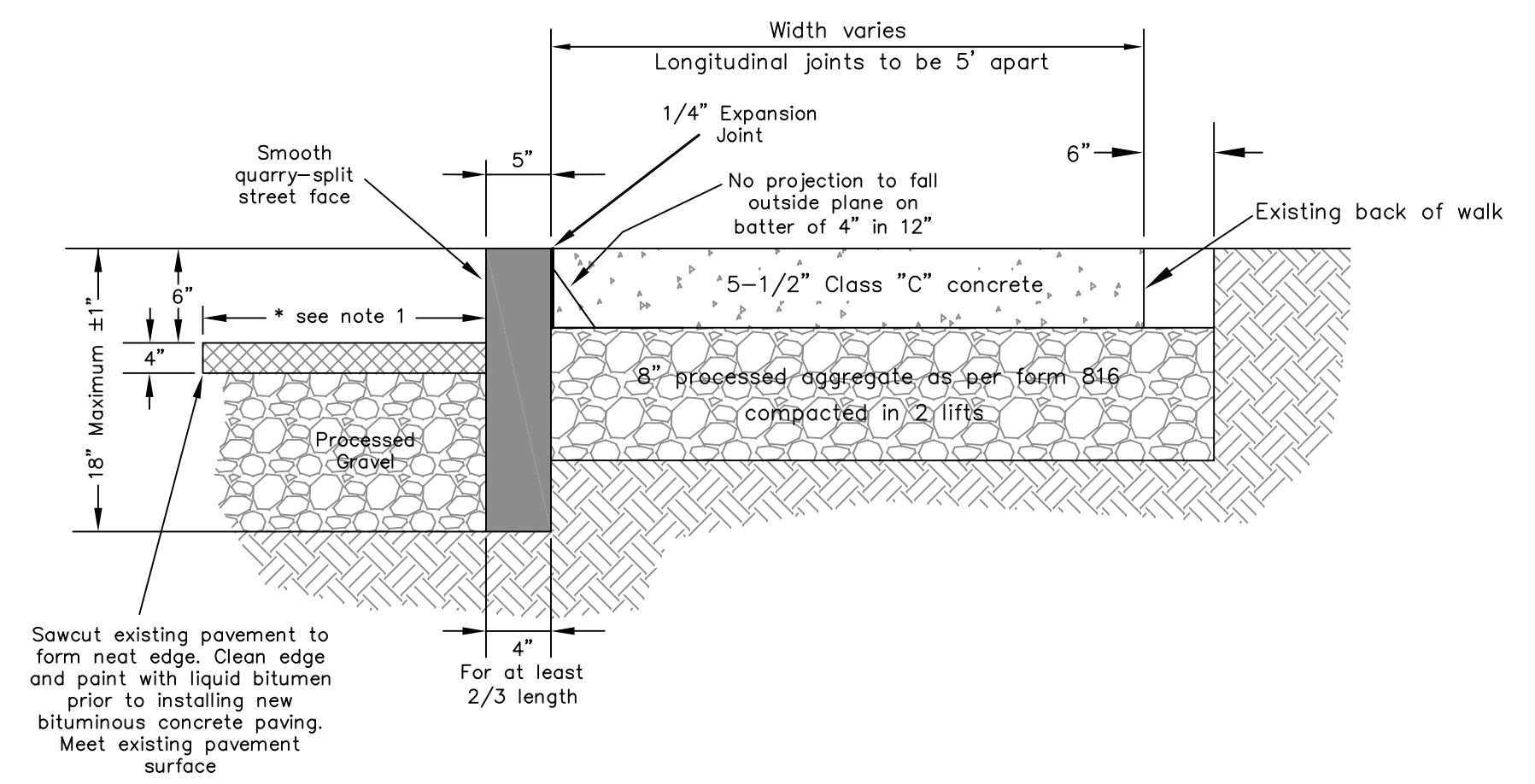
Concrete Curbing and Walk

(N.T.S.)



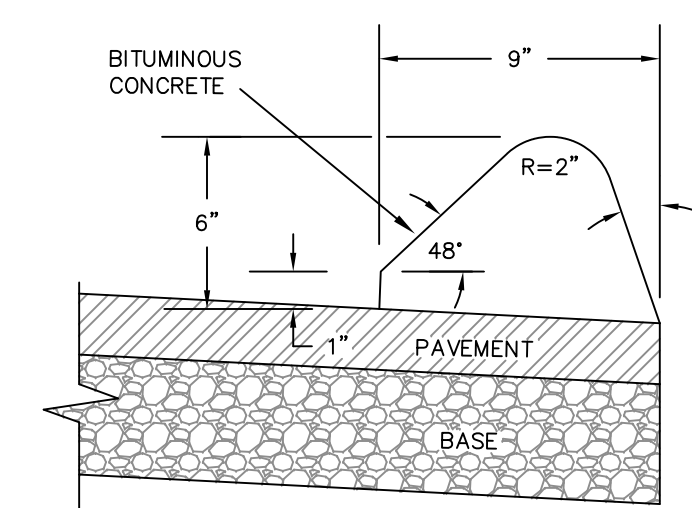
Typical Driveway Layout

CURBING



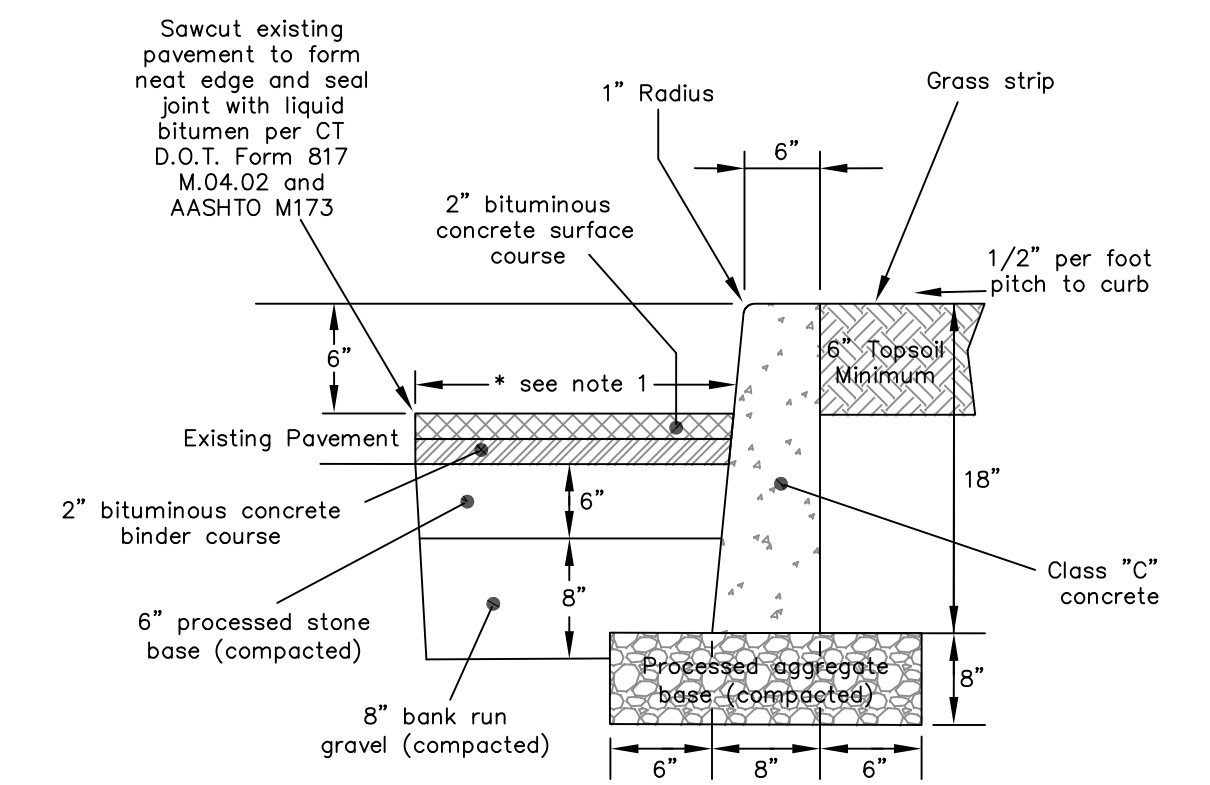
Granite Curbing

(N.T.S.)



Bituminous Concrete Lip Curbing

Machine Formed

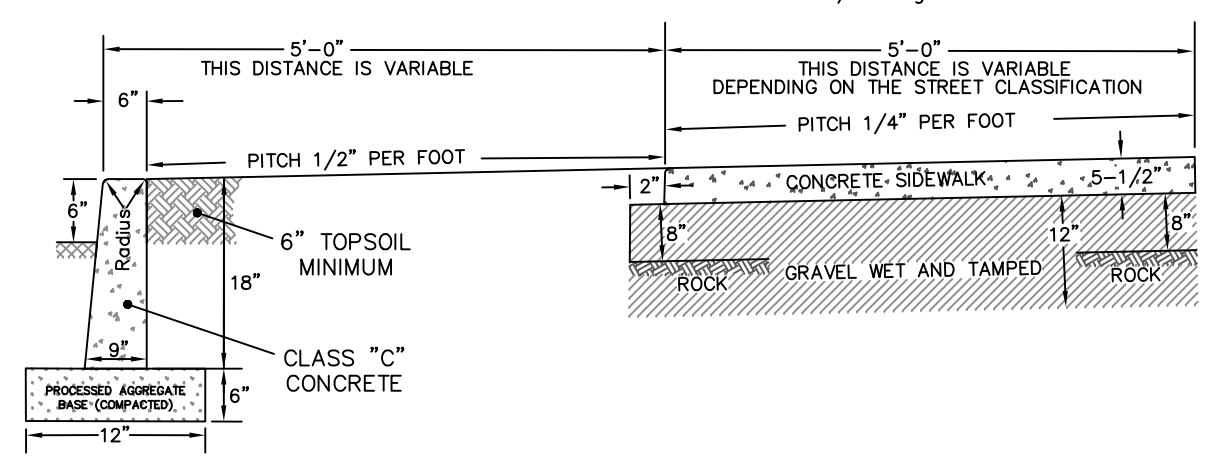


Poured in Place Concrete Curb

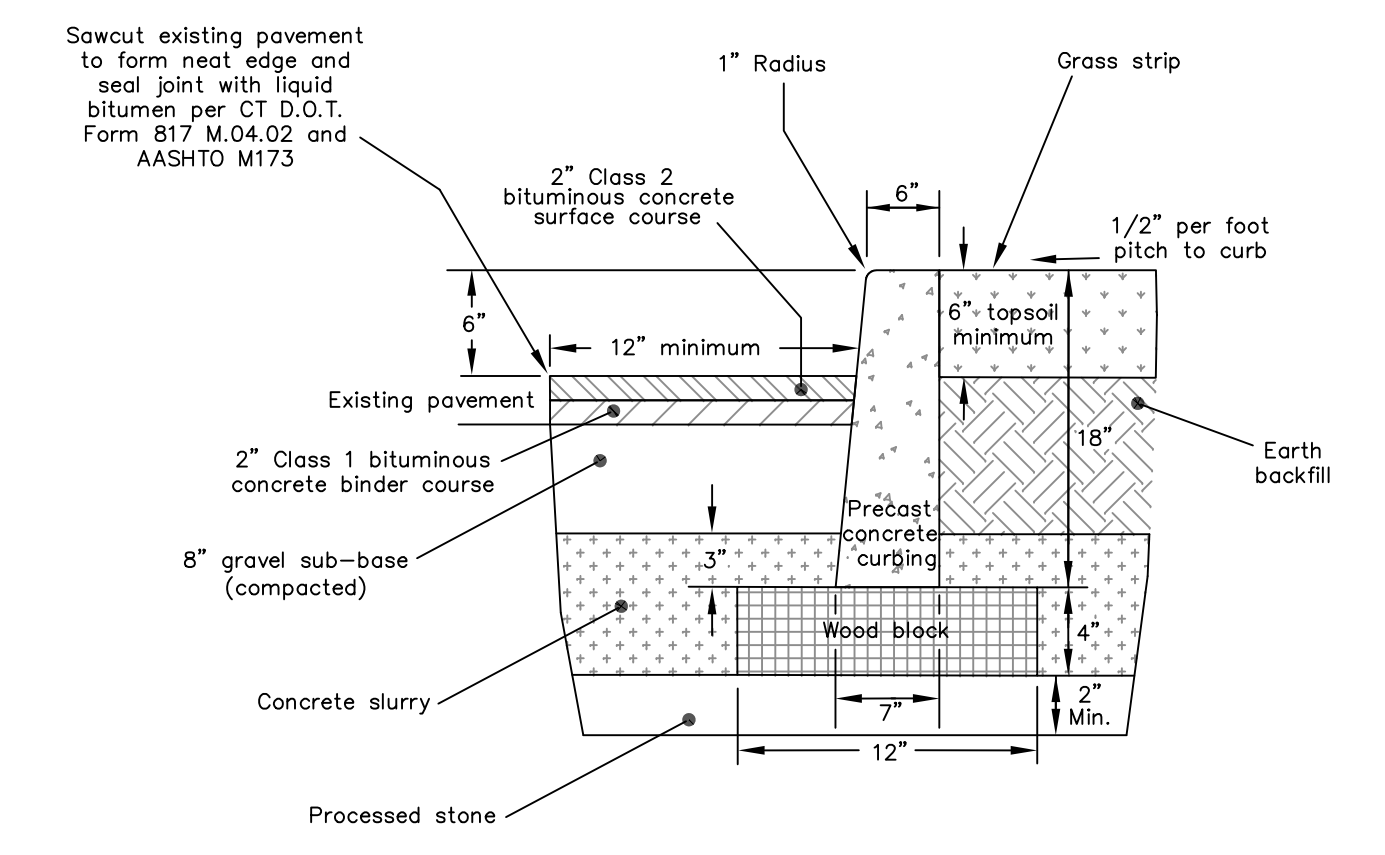
CURBING
CONCRETE CURBING WILL BE INSTALLED IN ACCORDANCE WITH STATE OF CONNECTICUT DEPARTMENT OF TRANSPORTATION STANDARD SPECIFICATIONS FORM 817, SECTION 8.11 EXCLUDING PARAGRAPHS 8.11.04 AND 8.11.05 FOR MEASUREMENT AND PAYMENT.

CONCRETE WALKS
CONCRETE WALKS WILL BE INSTALLED IN ACCORDANCE WITH STATE OF CONNECTICUT DEPARTMENT OF TRANSPORTATION STANDARD SPECIFICATIONS FORM 817, SECTION 9.21 EXCLUDING PARAGRAPHS 9.21.04 AND 9.21.05 FOR MEASUREMENT AND PAYMENT.

NOTE: Sidewalks must be formed with 2"x6" lumber or 5-1/2" high metal or wood forms

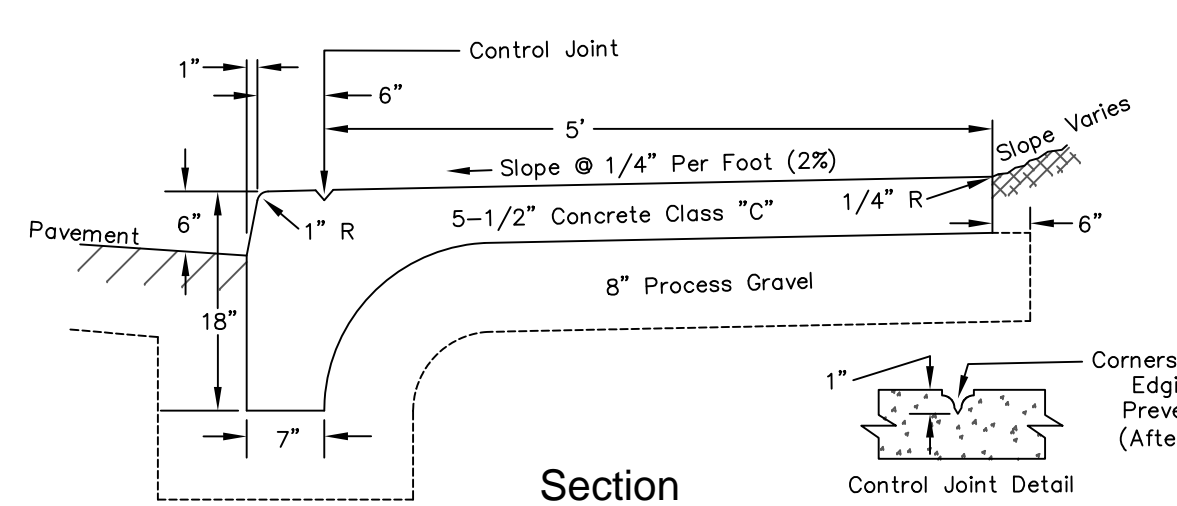


Typical Curb & Sidewalk



Precast Concrete Curb Detail

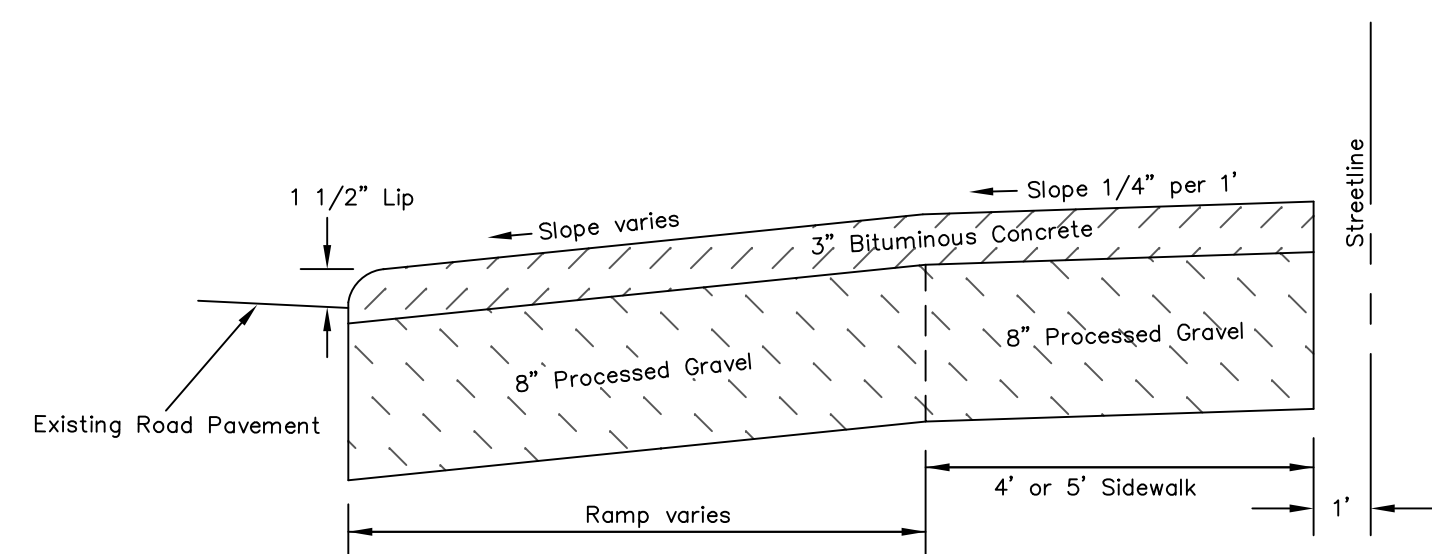
Not To Scale



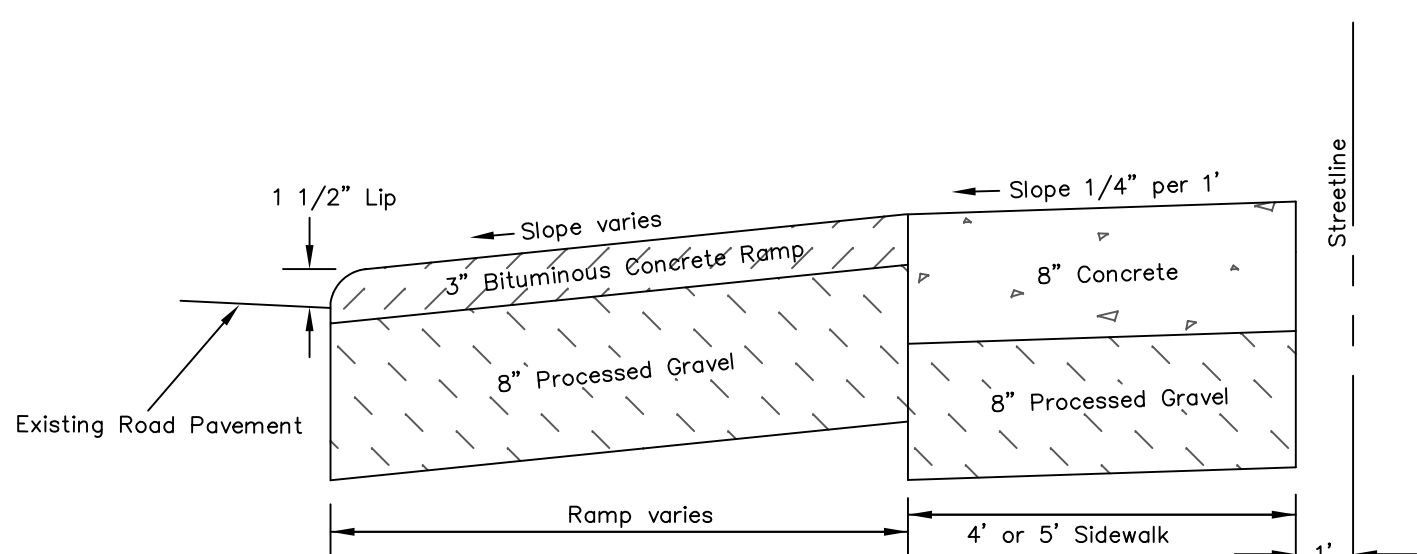
Section

Typical Monolithic Curb & Sidewalk

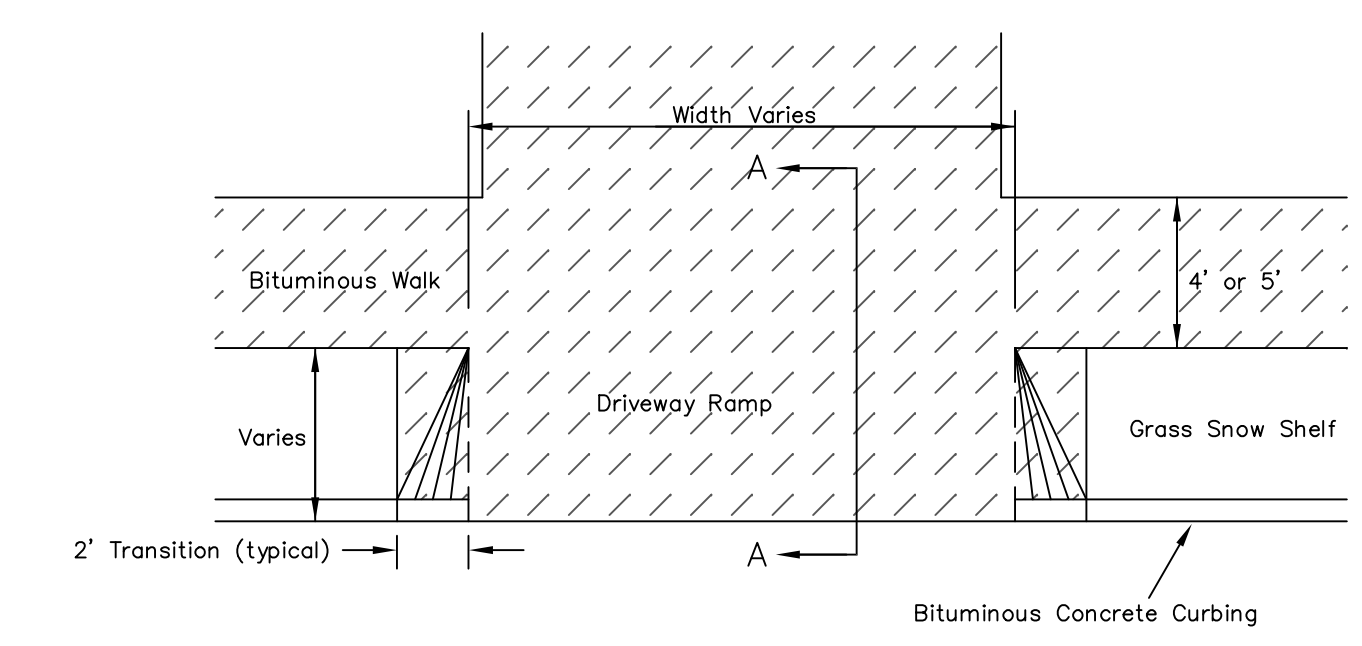
NOTE: Sidewalks must be formed with 2"x6" lumber or 5-1/2" high metal or wood forms



Section A-A



Section B-B

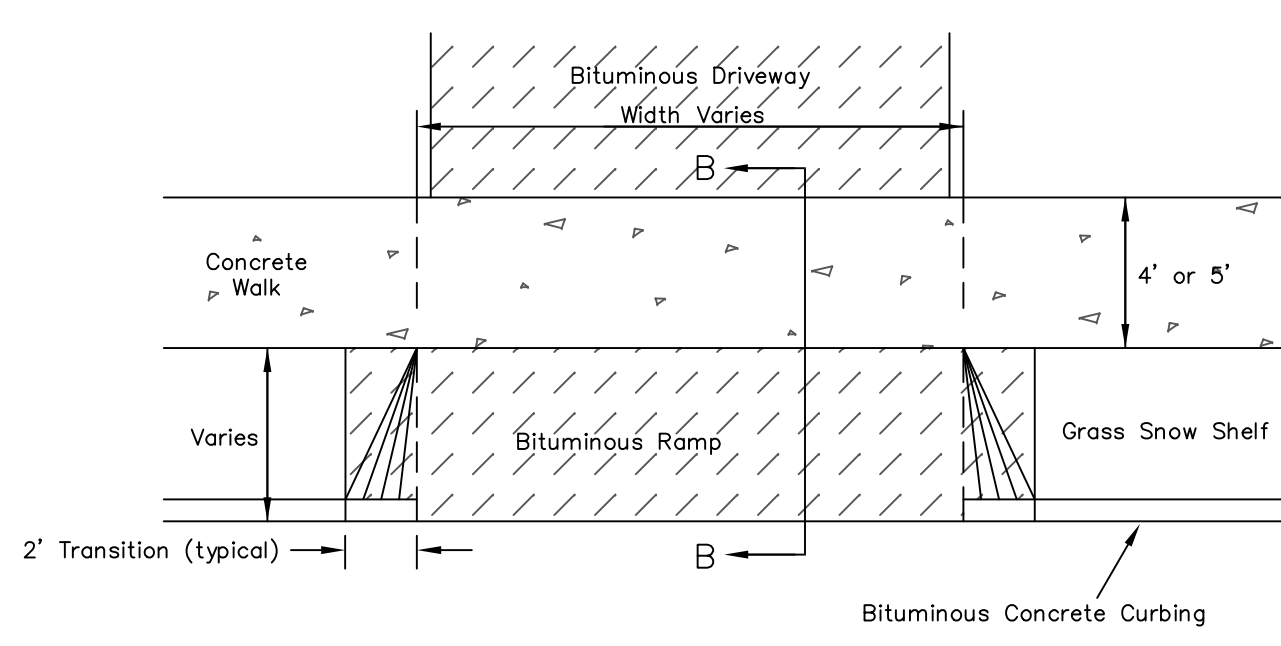


Plan

Residential Bituminous Driveway and Sidewalk

(N.T.S.)

NOTE: Only allowed in outer district and with approval of Planning Commission



Plan

Residential Concrete Sidewalk with Bituminous Apron

(N.T.S.)

NOTE: Only allowed upon approval of the City of Meriden Engineering Department

Detail Sheet		DATE:	2/20/19
Sidewalk and Driveway Standards		DESIGN:	BBD
DEPARTMENT OF PUBLIC WORKS		DRAWN:	BBD
Engineering Division		SCALE:	Not to Scale
City Hall Room 19		DWG.	
Meriden, Connecticut		SHEET	1
		OF	1