



**PURCHASING DIVISION  
ROOM 210 CITY HALL  
142 EAST MAIN STREET  
MERIDEN, CONNECTICUT 06450-8022**

**RAWLE DUMMETT  
PURCHASING OFFICER**

**PHONE 203-630-4115**

**ADDENDUM #002**

**TO THE BID FOR: B024-27R - 1336 East Main Street Building Renovation and Code Improvements**

**FOR: City of Meriden**

**BID DUE DATE: March 26, 2024 @ 11:00 AM**

**The purpose of this Addendum is to provide additional information for submittals.**

**Question:** Are the revised engineering plans for outside drainage and any other changes being made to plans available?

**Answer:** *There are no changes. The previous plans remain... a detailed summary to follow.*

**-Question:** Can the bid be submitted with individual pricing of inside and outside work separately?

**-Answer:** *Bidders shall provide pricing in accordance with the breakdown in the Bid Form.*

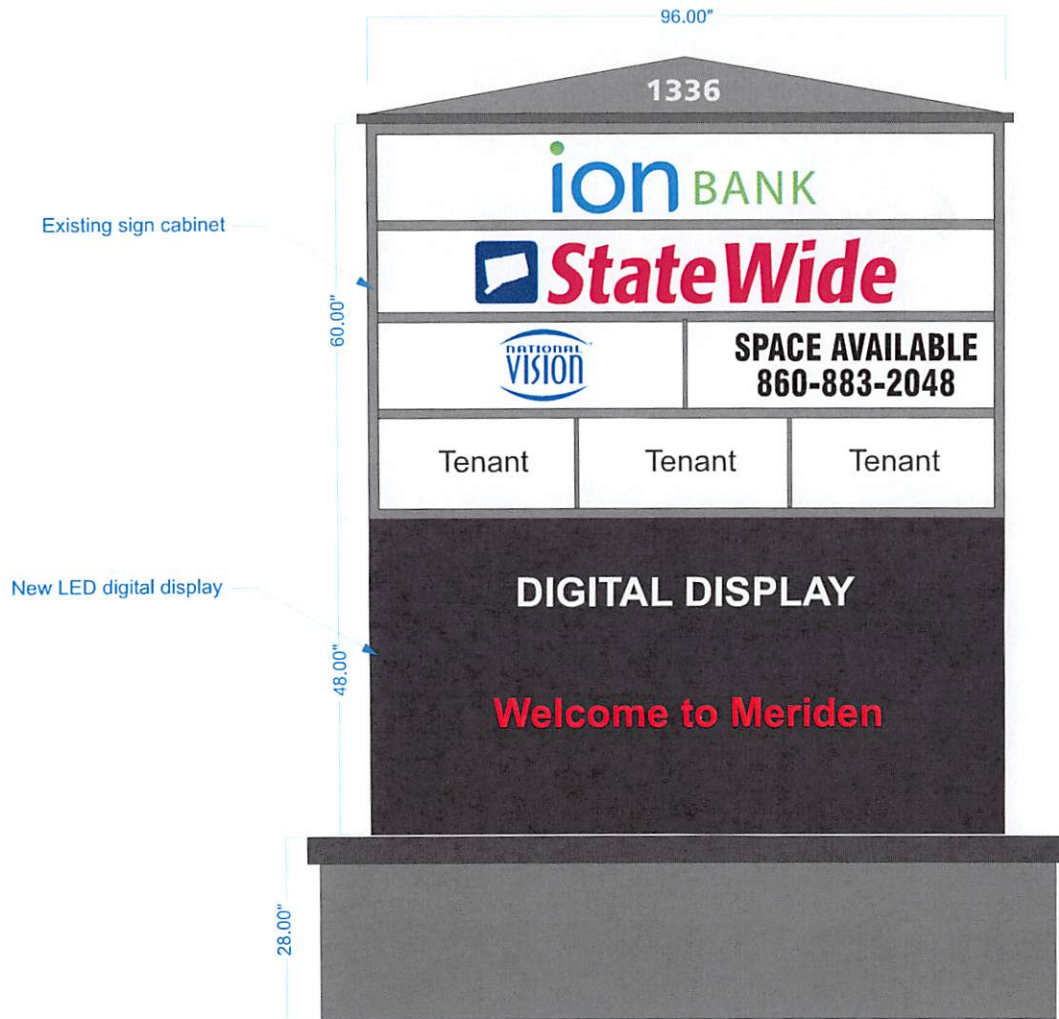
**-Question:** Will details of new signage in front entrance of property be provided and details for some of the items that need to be purchased to match existing units in the building that were spoken of at walk through are available yet?

**Answer:** *See the attached.*

*Please note; The entire project will be managed and completed by a GC and not as separate projects.*

**Please acknowledge receipt of all addenda in your Bid.**

**Rawle Dummett  
Purchasing Officer  
Dated: March 4, 2024**



One 48" x 96" two sided cabinet with LED digital display on each side. The existing sign cabinet will be moved up and the new LED digital display will be located below the existing sign cabinet.

The minimum resolution of the LEDs is 10mm. LEDs are RGBW.

Versa Series High Definition 10mm SMD LED Display built with all aluminum cabinet LED display. Made in the USA with domestic and foreign components. Outdoor IP67 front/IP54 rear protection rating, 160 degree viewing angle LEDs, Conformal Coated Delta Power Supplies, Quick and easy installation brackets included. Comes standard with a 3 year limited warranty. MET Labs Certified and tested compliant with UL48, UL8750, UL1433.



POWER SUPPLY  
120 VAC - 277 VAC 20 AMP  
FOR ENTIRE SIGN  
12 VDC 14A SECONDARY

LISTED DISCONNECT  
SWITCH IN PRIMARY.  
JUNCTION BOX

1/2" CONDUIT WIRE  
SHIELD WITH LEADS

This drawing is the property of Shiner Signs, Inc. and all rights to its use for reproduction are strictly reserved by Shiner Signs, Inc © 2019



38 Elm Street Meriden, CT 06450  
Phone 203-634-4331 Fax 203-630-2780  
www.shinersigns.com



Color: Bronze

Weight: 32.0 lbs

**Project:**

**Type:**

**Prepared By:**

**Date:**

**Driver Info**

Type	Constant Current
120V	0.89A
208V	0.58A
240V	0.50A
277V	0.44A
Input Watts	108.2W

**LED Info**

Watts	105W
Color Temp	3000K (Warm)
Color Accuracy	71 CRI
L70 Lifespan	100,000
Lumens	12,971
Efficacy	119.9 LPW

## Technical Specifications

### Listings

**UL Listing:**

Suitable for wet locations

**DLC Listed:**

This product is on the Design Lights Consortium (DLC) Qualified Products List and is eligible for rebates from DLC Member Utilities.

DLC Product Code: P0000177F

**IESNA LM-79 & LM-80 Testing:**

RAB LED luminaires and LED components have been tested by an independent laboratory in accordance with IESNA LM-79 and LM-80.

**Dark Sky Conformance:**

Conforms to (allows for conformance to) the requirements for the IDA's "Fixture Seal of Approval" as of March 1, 2016.

### LED Characteristics

**Lifespan:**

100,000-hour LED lifespan based on IES LM-80 results and TM-21 calculations

**LEDs:**

Multi-chip, high-output, long-life LEDs

**Color Stability:**

LED color temperature is warranted to shift no more than 200K in CCT over a 5-year period

**Color Uniformity:**

RAB's range of CCT (Correlated Color Temperature) follows the guidelines of the American National Standard for Specifications for the Chromaticity of Solid State Lighting (SSL) Products, ANSI C78.377-2017.

**Construction**

**IES Classification:**

The Type IV distribution (also known as a Forward Throw) is especially suited for mounting on the sides of buildings and walls, and for illuminating the perimeter of parking areas. It produces a semiCircular distribution with essentially the same candlepower at lateral angles from 90° to 270°.

**Effective Projected Area:**

EPA = 0.75

**Maximum Ambient Temperature:**

Suitable for use in 40°C (104°F)

**Cold Weather Starting:**

Minimum starting temperature is -40°C (-40°F)

**Thermal Management:**

Superior thermal management with external "Air-Flow" fins

**Lens:**

Tempered glass lens

**Housing:**

Die-cast aluminum housing, lens frame and mounting arm

**Mounting:**

Universal mounting arm compatible for hole spacing patterns from 1" to 5 1/2" center to center. Round Pole Adaptor plate included as a standard. Easy slide and lock to mount fixture with ease. Round pole diameter must be >4" to mount fixtures at 90° orientation.

**Reflector:**

Specular vacuum-metallized polycarbonate

**Gaskets:**

High-temperature silicone gaskets

**IP Rating:**

Ingress Protection rating of IP66 for dust and water

## Technical Specifications (continued)

### Construction

#### Finish:

Formulated for high durability and long-lasting color

#### Green Technology:

Mercury and UV free. RoHS-compliant components.

### Electrical

#### Surge Protection:

4kV

#### Drivers:

Two Drivers, Constant Current, Class 2, 1400mA, 100-277V, 50/60Hz, 0.8A, Power Factor 99%

#### THD:

7.6% at 120V, 16.2% at 277V

#### Power Factor:

99.6% at 120V, 94.5% at 277V

#### Other

#### Compatibility:

Compatible with Round Poles with a diameter of 2.5" to 6"

#### Warranty:

RAB warrants that our LED products will be free from defects in materials and workmanship for a period of five (5) years from the date of delivery to the end user, including coverage of light output, color stability, driver performance and fixture finish. RAB's warranty is subject to all terms and conditions found at [www.rablighting.com/legal#warranty](http://www.rablighting.com/legal#warranty)

#### Equivalency:

Replaces 320W Metal Halide

#### Buy American Act Compliance:

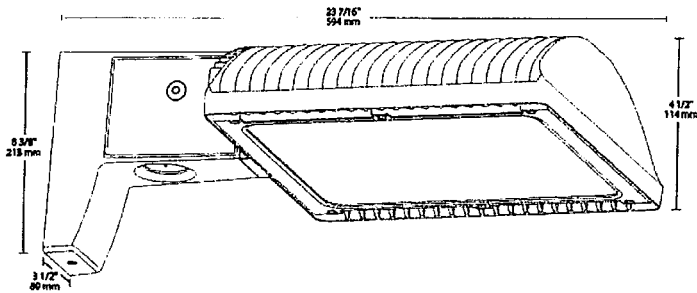
RAB values USA manufacturing! Upon request, RAB may be able to manufacture this product to be compliant with the Buy American Act (BAA). Please contact customer service to request a quote for the product to be made BAA compliant.

### Optical

#### BUG Rating:

B1 U0 G2

## Dimensions



## Features

- 66% energy cost savings vs. HID
- 100,000-hour LED lifespan
- 5-year warranty

## Ordering Matrix

Family	Optics	Wattage	Mounting	Color Temp	Finish	Driver Options	Options	Other Options
ALED	4T	105		Y				
	4T = Type IV	50 = 50W 78 = 78W	Blank = Pole mount SF = Slipfitter	Blank = 5000K (Cool) N = 4000K (Neutral) Y = 3000K (Warm)	Blank = Bronze RG = Roadway Gray W = White K = Black	Blank = 120-277V /480 = 480V /BL = Bi-Level /D10 = 0-10V Dimming	Blank = No Option /LC = Lightcloud® Controller /PCS = 120V Swivel Photocell /PCS2 = 277V Swivel Photocell /PCT = 120-277V Twistlock Photocell /PCS4 = 480V Swivel Photocell /PCT4 = 480V Twistlock Photocell /WS2 = Multi-Level Motion Sensor 20 ft. /WS4 = Multi-Level Motion Sensor 40 ft.	Blank = Standard USA = BAA Compliant
	3T = Type III	105 = 105W						
	2T = Type II	125 = 125W 150 = 150W 150W						



Project: \_\_\_\_\_ Type: \_\_\_\_\_

Prepared By: \_\_\_\_\_ Date: \_\_\_\_\_

Square steel poles drilled for 2 Area Lights at 180°. Designed for ground mounting. Poles are stocked nationwide for quick shipment. Protective packaging ensures poles arrive at the job site good as new.

Color: Bronze

Weight: 136.7 lbs

**Technical Specifications**

**Listings**

**CSA Listed:**

Suitable for wet locations

**Construction**

**Shaft:**

46,000 p.s.i. minimum yield.

**Hand Holes:**

Reinforced with grounding lug and removable cover

**Base Plates:**

Slotted base plates 36,000 p.s.i.

**Shipping Protection:**

All poles are shipped in individual corrugated cartons to prevent finish damage

**Color:**

Bronze powder coating

**Height:**

20 FT

**Weight:**

137 lbs

**Gauge:**

11

**Wall Thickness:**

1/8"

**Shaft Size:**

4"

**Hand Hole Dimensions:**

3" x 5"

**Bolt Circle:**

8 1/2"

**Base Dimension:**

8"

**Anchor Bolt:**

Galvanized anchor bolts and galvanized hardware and anchor bolt template. All bolts have a 3" hook.

**Anchor Bolt Templates:**

WARNING Template must be printed on 11" x 17" sheet for actual size. CHECK SCALE BEFORE USING. Templates shipped with anchor bolts and available [www.rablighting.com/downloads/instructions/poles4.pdf](http://www.rablighting.com/downloads/instructions/poles4.pdf) f" target="\_blank.

**Pre-Shipped Anchor Bolts:**

Bolts can be pre-shipped upon request for additional freight charge

**Max EPA's/Max Weights:**

70MPH 8.3 ft./240 lb.  
 80MPH 5.6 ft./165 lb.  
 90MPH 3.6 ft./110 lb.  
 100MPH 2.2 ft./75 lb.  
 110MPH 1.0 ft./45 lb.  
 120MPH 0.2 ft./20 lb..

**Accessories:**

Anchor Bolts: [www.rablighting.com/product/ABK4-11](http://www.rablighting.com/product/ABK4-11)

**Technical Specifications (continued)**

**Other**

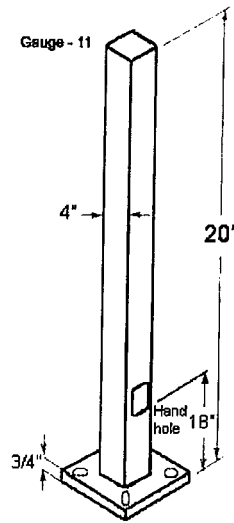
**Terms of Sale:**

Pole Terms of Sale is available .

**Buy American Act Compliance:**

RAB values USA manufacturing! Upon request, RAB may be able to manufacture this product to be compliant with the Buy American Act (BAA). Please contact customer service to request a quote for the product to be made BAA compliant.

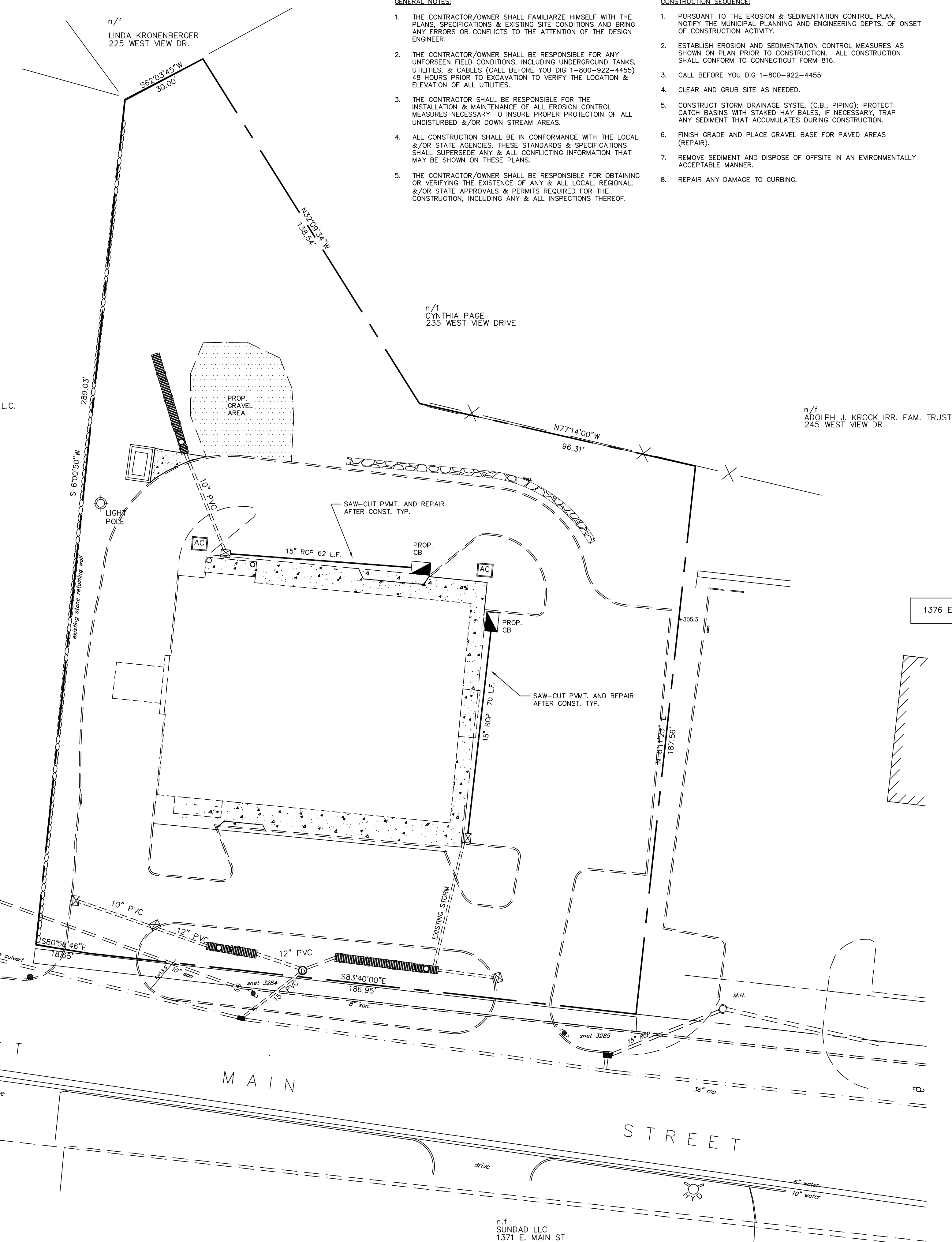
Dimensions



Features

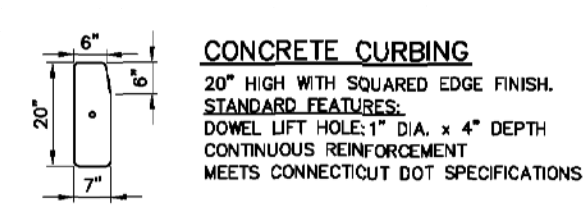
- Designed for ground mounting
- Heavy duty TGIC polyester coating
- Reinforced hand holes with grounding lug and removable cover for easy wiring access
- Anchor Bolt Kit includes pole cap and base cover (sold separately)
- Custom manufactured for each application



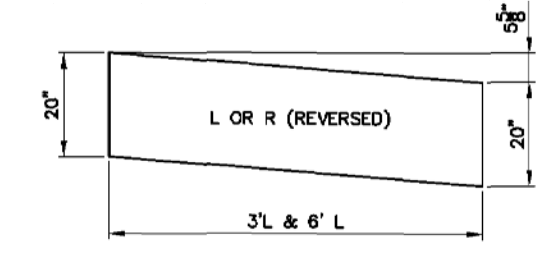


- GENERAL NOTES:**
- THE CONTRACTOR/OWNER SHALL FAMILIARIZE HIMSELF WITH THE PLANS, SPECIFICATIONS & EXISTING SITE CONDITIONS AND BRING ANY ERRORS OR CONFLICTS TO THE ATTENTION OF THE DESIGN ENGINEER.
  - THE CONTRACTOR/OWNER SHALL BE RESPONSIBLE FOR ANY UNFORSEEN FIELD CONDITIONS, INCLUDING UNDERGROUND TANKS, UTILITIES, & CABLES (CALL BEFORE YOU DIG 1-800-922-4455) 48 HOURS PRIOR TO EXCAVATION TO VERIFY THE LOCATION & ELEVATION OF ALL UTILITIES.
  - THE CONTRACTOR SHALL BE RESPONSIBLE FOR THE INSTALLATION & MAINTENANCE OF ALL EROSION CONTROL MEASURES NECESSARY TO INSURE PROPER PROTECTION OF ALL UNDISTURBED &/OR DOWN STREAM AREAS.
  - ALL CONSTRUCTION SHALL BE IN CONFORMANCE WITH THE LOCAL &/OR STATE AGENCIES. THESE STANDARDS & SPECIFICATIONS SHALL SUPERSEDE ANY & ALL CONFLICTING INFORMATION THAT MAY BE SHOWN ON THESE PLANS.
  - THE CONTRACTOR/OWNER SHALL BE RESPONSIBLE FOR OBTAINING OR VERIFYING THE EXISTENCE OF ANY & ALL LOCAL, REGIONAL, &/OR STATE APPROVALS & PERMITS REQUIRED FOR THE CONSTRUCTION, INCLUDING ANY & ALL INSPECTIONS THEREOF.

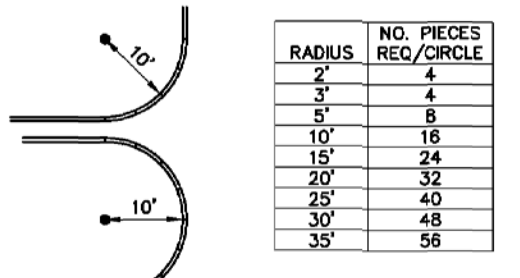
- CONSTRUCTION SEQUENCE:**
- PURSUANT TO THE EROSION & SEDIMENTATION CONTROL PLAN, NOTIFY THE MUNICIPAL PLANNING AND ENGINEERING DEPTS. OF ONSET OF CONSTRUCTION ACTIVITY.
  - ESTABLISH EROSION AND SEDIMENTATION CONTROL MEASURES AS SHOWN ON PLAN PRIOR TO CONSTRUCTION. ALL CONSTRUCTION SHALL CONFORM TO CONNECTICUT FORM 816.
  - CALL BEFORE YOU DIG 1-800-922-4455
  - CLEAR AND GRUB SITE AS NEEDED.
  - CONSTRUCT STORM DRAINAGE SYSTE. (C.B., PIPING), PROTECT CATCH BASINS WITH STAKED HAY BALES, IF NECESSARY, TRAP ANY SEDIMENT THAT ACCUMULATES DURING CONSTRUCTION.
  - FINISH GRADE AND PLACE GRAVEL BASE FOR PAVED AREAS (REPAIR).
  - REMOVE SEDIMENT AND DISPOSE OF OFFSITE IN AN ENVIRONMENTALLY ACCEPTABLE MANNER.
  - REPAIR ANY DAMAGE TO CURBING.



**CONCRETE CURBING**  
 20" HIGH WITH SQUARED EDGE FINISH.  
 STANDARD FEATURES:  
 DOWEL LIFT HOLE: 1" DIA. x 4" DEPTH  
 CONTINUOUS REINFORCEMENT  
 MEETS CONNECTICUT DOT SPECIFICATIONS

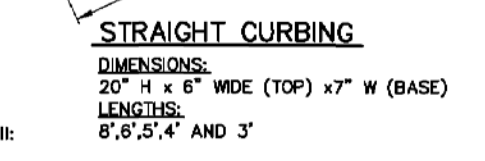


**TRANSITION END**  
 DIMENSIONS:  
 20" H x 6" WIDE (TOP) x 7" W (BASE)  
 LENGTHS:  
 6" AND 3"



RADIUS	NO. PIECES REQ./CIRCLE
3"	4
5"	8
10"	16
15"	24
20"	32
25"	40
30"	48
35"	56

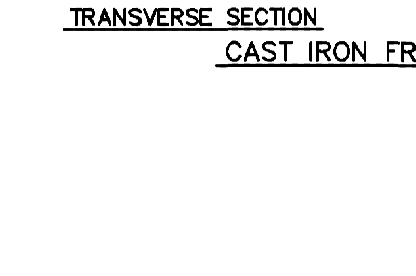
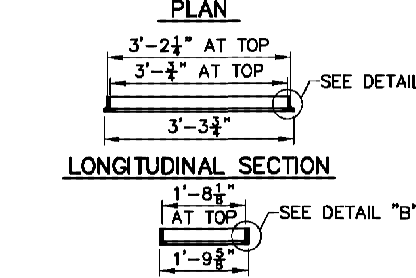
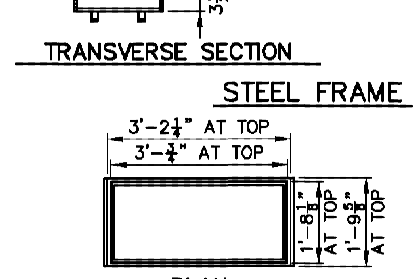
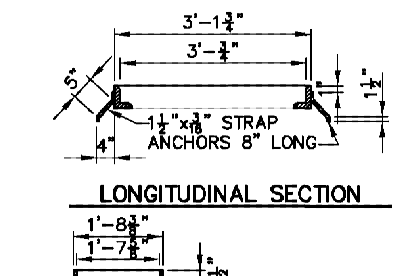
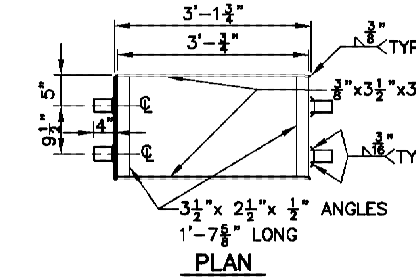
**TRANSITION END**  
 DIMENSIONS:  
 20" H x 6" WIDE (TOP) x 7" W (BASE)  
 STANDARD BASE:  
 4" LENGTHS CAN BE ASSEMBLED TO FORM THE FOLLOWING RADII:  
 2, 3, 5, 10, 15, 20, 25, 30' AND 35'.



**STRAIGHT CURBING**  
 DIMENSIONS:  
 20" H x 6" WIDE (TOP) x 7" W (BASE)  
 LENGTHS:  
 6", 6", 5", 4" AND 3"

**CONCRETE CURB DETAIL PRECAST\*\***  
 NOT TO SCALE

- SPECIFICATIONS:**
- CONCRETE CURB SHALL BE MANUFACTURED TO MEET CONNECTICUT DOT SPECIFICATIONS.
  - CONCRETE STRENGTH - 5000 psi.
  - WEIGHT - 135 LBS./LINEAR FOOT.
  - REINFORCED WITH 2-#3 DEFORMED REINFORCED BARS.
  - AIR ENTRAINMENT - 5-7%
  - 2#6 REBAR - CONNECTING PINS.



**TYPICAL CONCRETE CURBING DETAILS**  
 SCALE: 1/4"=1'-0"

- NOTES:**
- ALL PIECES SHALL BE 6'-0" LONG EXCEPT FOR CLOSURES WHERE NO PIECE LESS THAN 4'-0" LONG SHALL BE USED.
  - CURBS OF RADIUS LESS THAN 100' SHALL BE CUT OR CAST TO REQUIRED RADIUS AND LENGTH.
  - USE 1" PREFORMED EXPANSION JOINT FILLER SPACES NOT MORE THAN 20'-0" O.C. FOR PRECAST OR CAST-IN-PLACE CONCRETE CURB.
  - JOINT BETWEEN GRANITE OR CONCRETE SECTIONS ARE NOT TO EXCEED 1'.
  - MINIMUM WIDTH OF CURB AT BOTTOM SHALL BE 4" OR NO GREATER THAN 1/2 THE HEIGHT OF THE PIECE.
  - CLASS "C" AE CONCRETE TO BE PLACED AT JOINTS AS SHOWN IN GRANITE CURB DETAIL.
- \*NOTE:**  
 TO BE USED ONLY IN AREAS AS APPROVED BY THE CITY ENGINEER.

**NOTES:**

**GENERAL**

STEEL OR CAST IRON FRAMES TO BE USED FOR TYPE "A" & "B" GRATES.

TYPE "A" GRATES TO BE USED ON ALL ROADWAYS WHERE BICYCLE TRAFFIC IS ALLOWED OR AS DIRECTED BY THE ENGINEER.

TYPE "B" GRATES TO BE USED ON ALL LIMITED ACCESS ROADWAYS, DRIVEWAYS AND WHERE BICYCLE TRAFFIC IS NOT ALLOWED OR AS DIRECTED BY THE ENGINEER. STEEL FRAMES AND GRATES SHALL BE GALVANIZED IN ACCORDANCE WITH M.D.D.03.

CAST IRON FRAMES AND GRATES ARE NOT TO BE GALVANIZED.

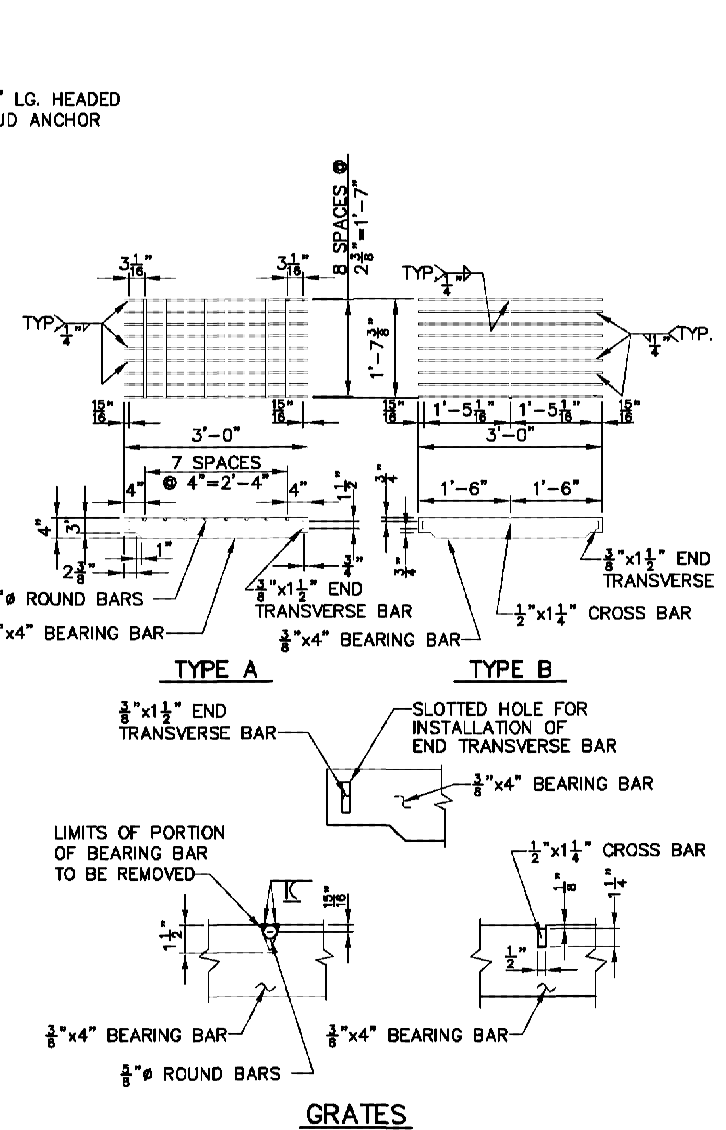
**STEEL**

ALL METAL UNITS SUBJECT TO MANUFACTURING TOLERANCES.

ONLY LOW HYDROGEN ELECTRODES SHALL BE USED.

DIMENSIONAL TOLERANCES MAY BE ±1/16".

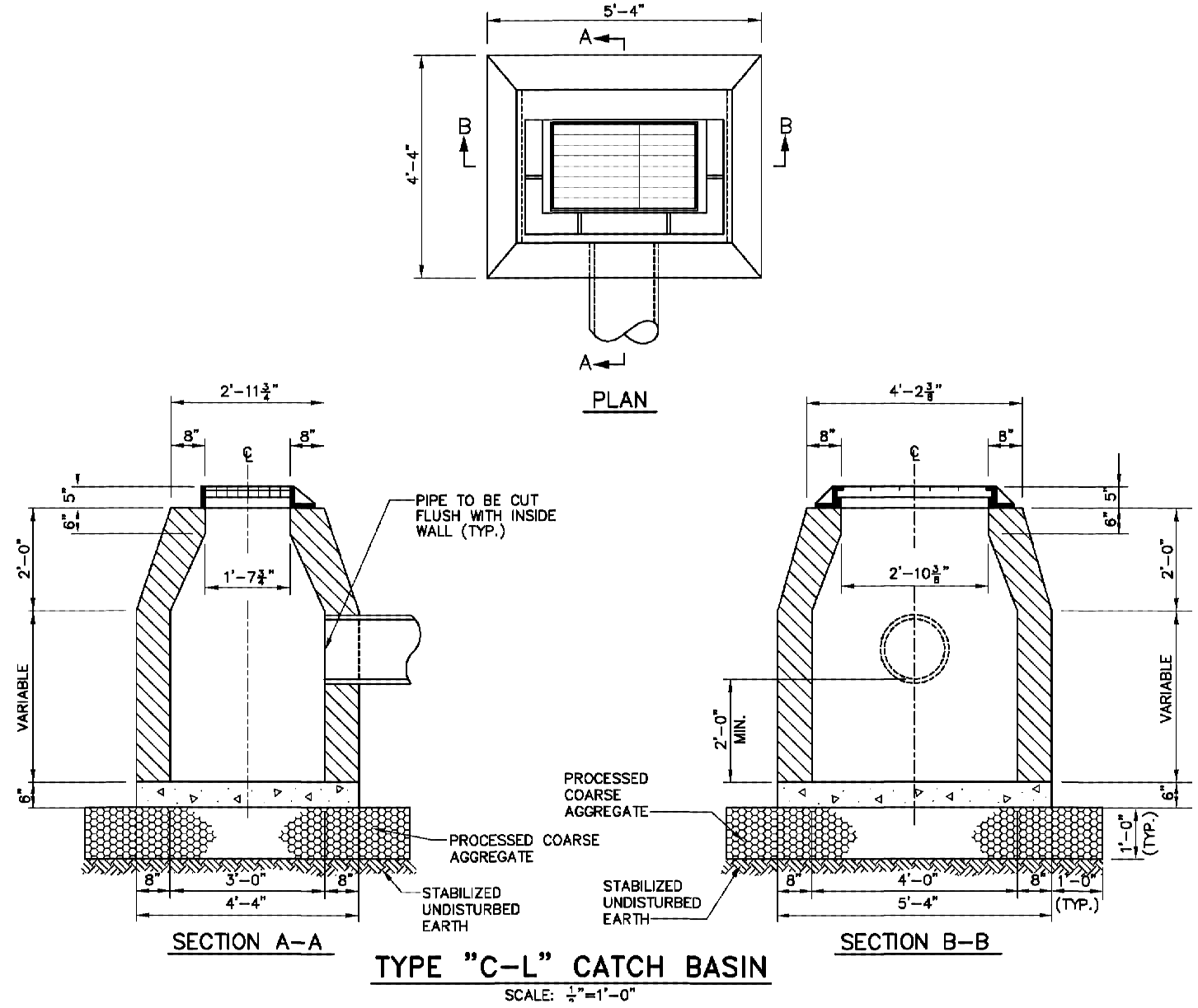
WELDING WILL BE PERFORMED IN ACCORDANCE WITH THE STANDARD SPECIFICATIONS FOR ROADS, BRIDGES AND INCIDENTAL CONSTRUCTION.



**CATCH BASIN FRAME AND GRATE**  
 NOT TO SCALE

**NOTES:**

- HOOD TYPE TRAP NOT SHOWN.
- NOTES NUMBERS (A) THROUGH (D) APPLY TO THE DETAILS.
- GRANITE CURB INLET SEE DETAIL THIS SHEET
- STANDARD CATCH BASIN FRAME AND GRATE
- CROSS SLOPE AS PER CROSS SECTION
- SET IN CEMENT MORTAR
- UNLESS OTHERWISE ORDERED, MIN. DEPTH OVER TRAVELWAY: 1'-7 1/2" MIN. DEPTH UNDER UNTRAVELED AREA: 0'-3"
- HOOD TYPE TRAP WHERE REQUIRED (SEE DETAIL IN-11)
- BRICK OR CONCRETE BLOCK UNITS (TYP.)
- CLASS B (AE) PRECAST OR REINFORCED CONCRETE CURBING PRECAST UNITS USED THE UNIT SHALL BE AT LEAST 1" BELOW THE BOTTOM OF THE PIPE OUTLETING FROM THE CATCH BASIN
- STANDARD CATCH BASIN FRAME AND GRATE



**TYPE "C-L" CATCH BASIN**  
 SCALE: 1/4"=1'-0"

"TO THE BEST OF MY KNOWLEDGE AND BELIEF THIS MAP IS SUBSTANTIALLY CORRECT AS NOTED HEREON."

*Swick*

©2021 D. PAVINOLA, P.E., L.S., P.S.M.

**CONNECTICUT CONSULTING ENGINEERS, L.L.C.**  
**CIVIL ENGINEERS & SURVEYORS**

ONE PRESTIGE DRIVE SUITE 110 203-639-8636



MERIDEN, CT. 06450  
 DATE: AUGUST 15, 2023  
 SCALE: 1"=20'  
 REVISIONS: MARCH 5, 2024  
 DRAWN BY: DWG #2340 SKETCH  
 SHEET #: 1

TITLE		DRAINAGE SKETCH	
SMU HOLDING LLC		1336 EAST MAIN STREET MERIDEN, CONNECTICUT	
DATE	AUGUST 15, 2023	SCALE	1"=20'
REVISIONS	MARCH 5, 2024	DRAWN BY	DWG #2340 SKETCH
		SHEET #	1